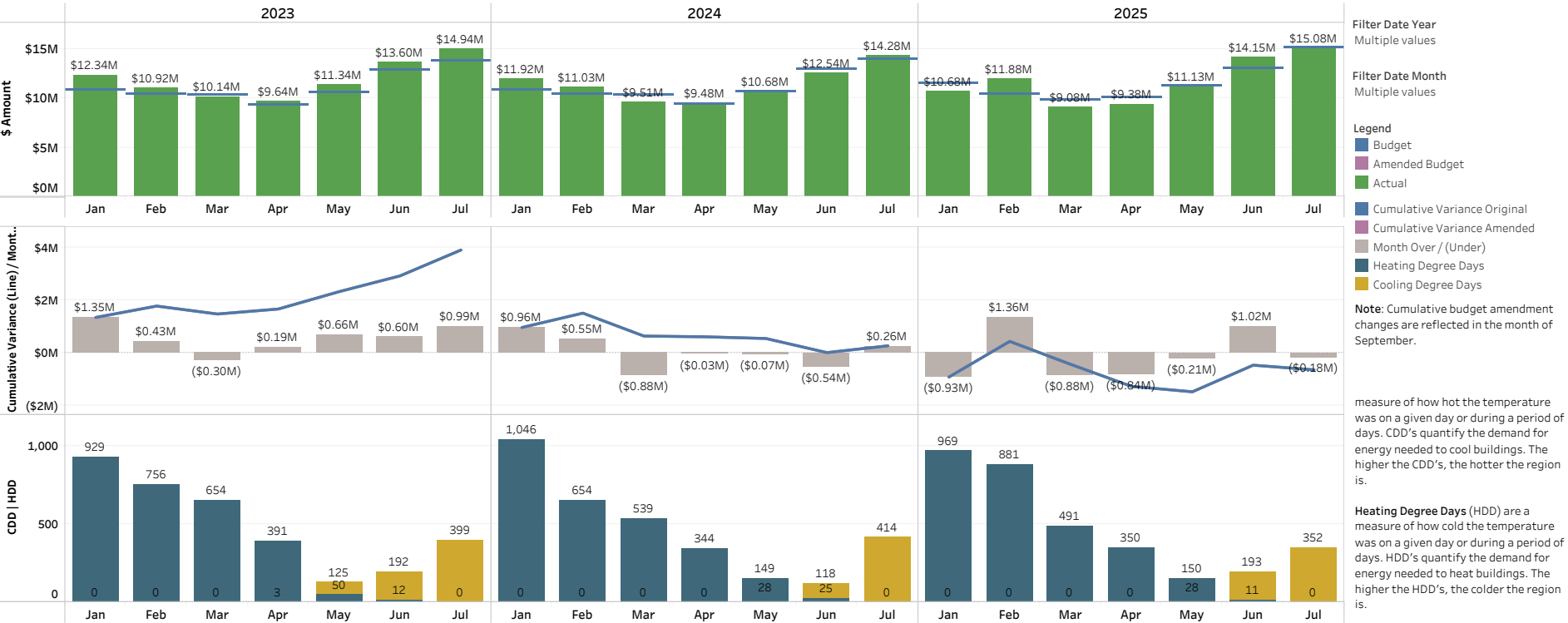
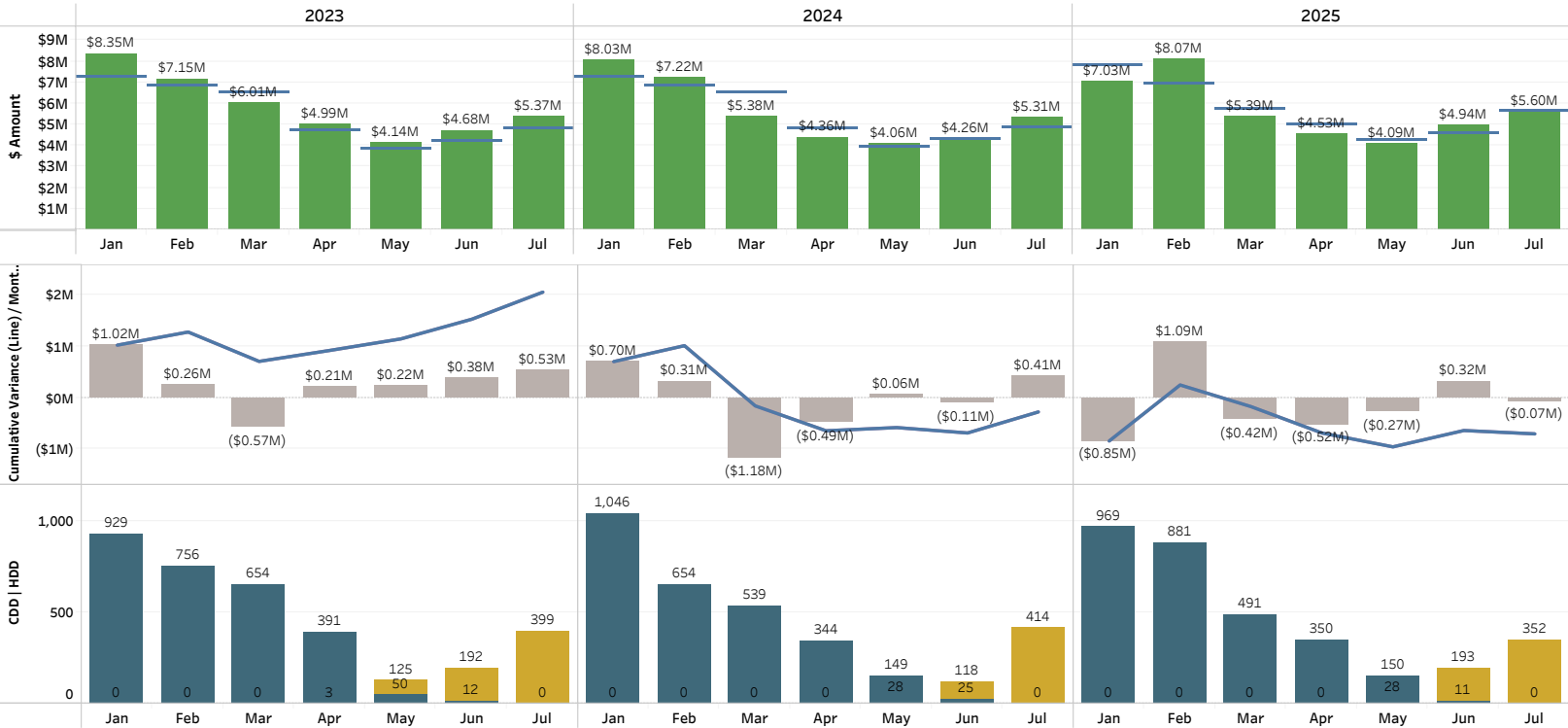


Cumulative Retail Revenue Budget vs Actuals (Original and Amended Budget): [All](#)



Cumulative Retail Revenue Budget vs Actuals (Original and Amended Budget): [Residential Sales](#)



Rate Class  
Residential Sales

Filter Date Year  
Multiple values

Filter Date Month  
Multiple values

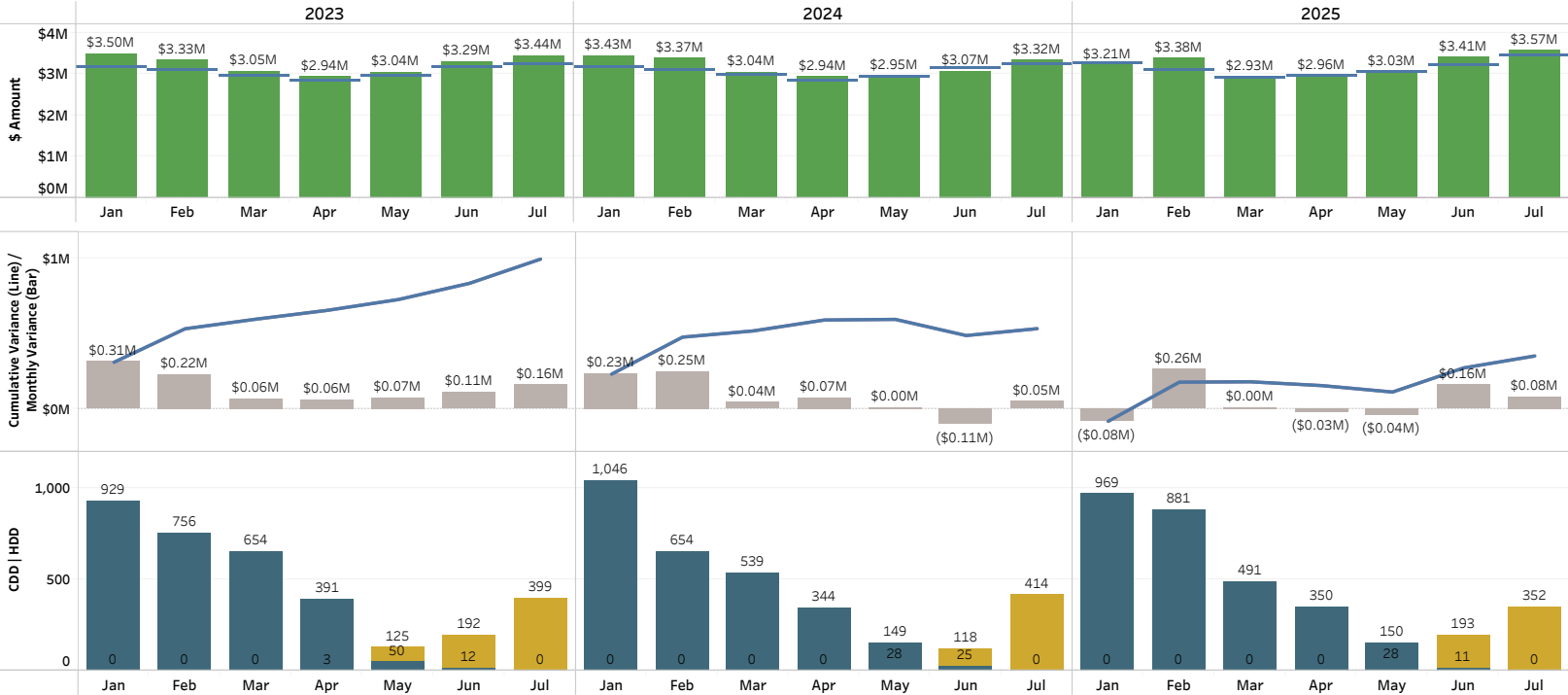
- Legend
- Budget
  - Amended Budget
  - Actual
  - Cumulative Variance Original
  - Cumulative Variance Amended
  - Month Over / (Under)
  - Heating Degree Days
  - Cooling Degree Days

**Note:** Cumulative budget amendment changes are reflected in the month of September.

measure of how hot the temperature was on a given day or during a period of days. CDD's quantify the demand for energy needed to cool buildings. The higher the CDD's, the hotter the region is.

**Heating Degree Days (HDD)** are a measure of how cold the temperature was on a given day or during a period of days. HDD's quantify the demand for energy needed to heat buildings. The higher the HDD's, the colder the region is.

Cumulative Retail Revenue Budget vs Actuals (Original and Amended Budget): Large General Service Sales, Medium General Service Sales, Small General Service Sales



Rate Class  
Multiple values

Filter Date Year  
Multiple values

Filter Date Month  
Multiple values

Legend  
Budget  
Amended Budget  
Actual

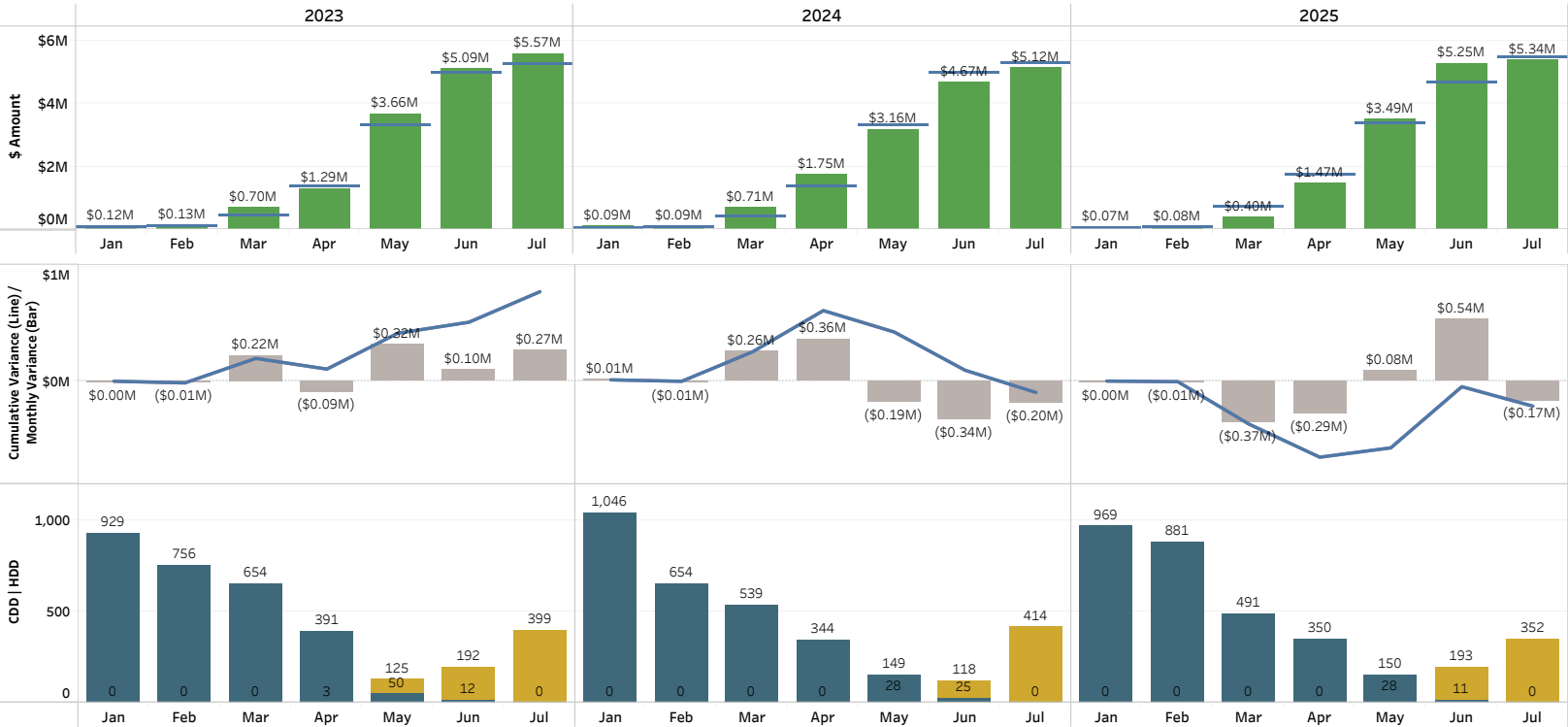
Cumulative Variance Original  
Cumulative Variance Amended  
Month Over / (Under)  
Heating Degree Days  
Cooling Degree Days

Note: Cumulative budget amendment changes are reflected in the month of September.

measure of how hot the temperature was on a given day or during a period of days. CDD's quantify the demand for energy needed to cool buildings. The higher the CDD's, the hotter the region is.

Heating Degree Days (HDD) are a measure of how cold the temperature was on a given day or during a period of days. HDD's quantify the demand for energy needed to heat buildings. The higher the HDD's, the colder the region is.

Cumulative Retail Revenue Budget vs Actuals (Original and Amended Budget): [Large Irrigation Sales](#)



Rate Class  
Large Irrigation Sales

Filter Date Year  
Multiple values

Filter Date Month  
Multiple values

Legend  
■ Budget  
■ Amended Budget  
■ Actual

■ Cumulative Variance Original  
■ Cumulative Variance Amended

■ Month Over / (Under)

■ Heating Degree Days

■ Cooling Degree Days

**Note:** Cumulative budget amendment changes are reflected in the month of September.

measure of how hot the temperature was on a given day or during a period of days. CDD's quantify the demand for energy needed to cool buildings. The higher the CDD's, the hotter the region is.

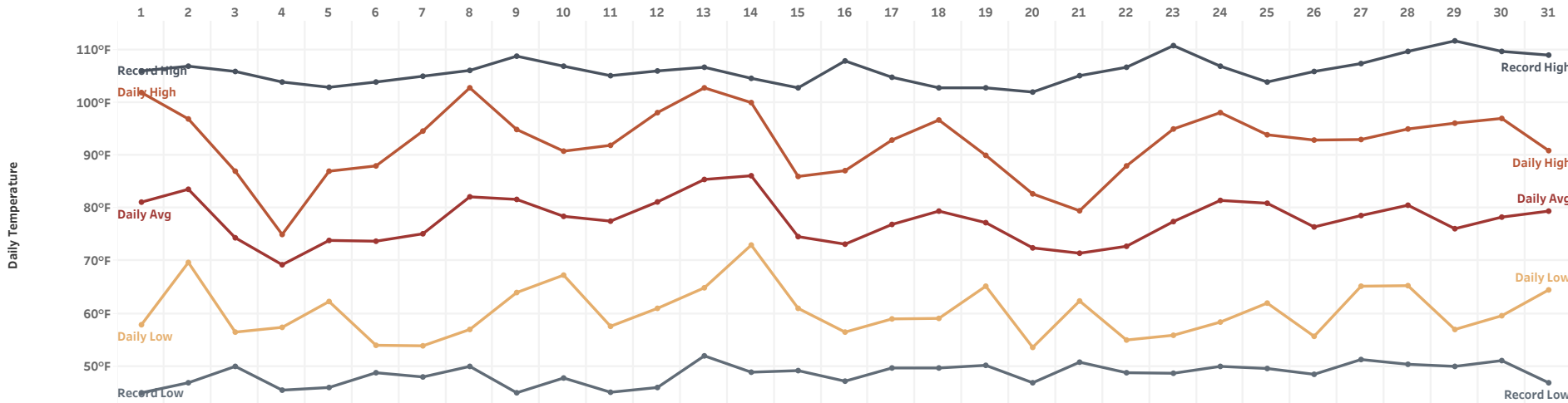
**Heating Degree Days (HDD)** are a measure of how cold the temperature was on a given day or during a period of days. HDD's quantify the demand for energy needed to heat buildings. The higher the HDD's, the colder the region is.

# Daily Temperature

Daily temperatures at Tri-Cities Airport with records since January 2000.

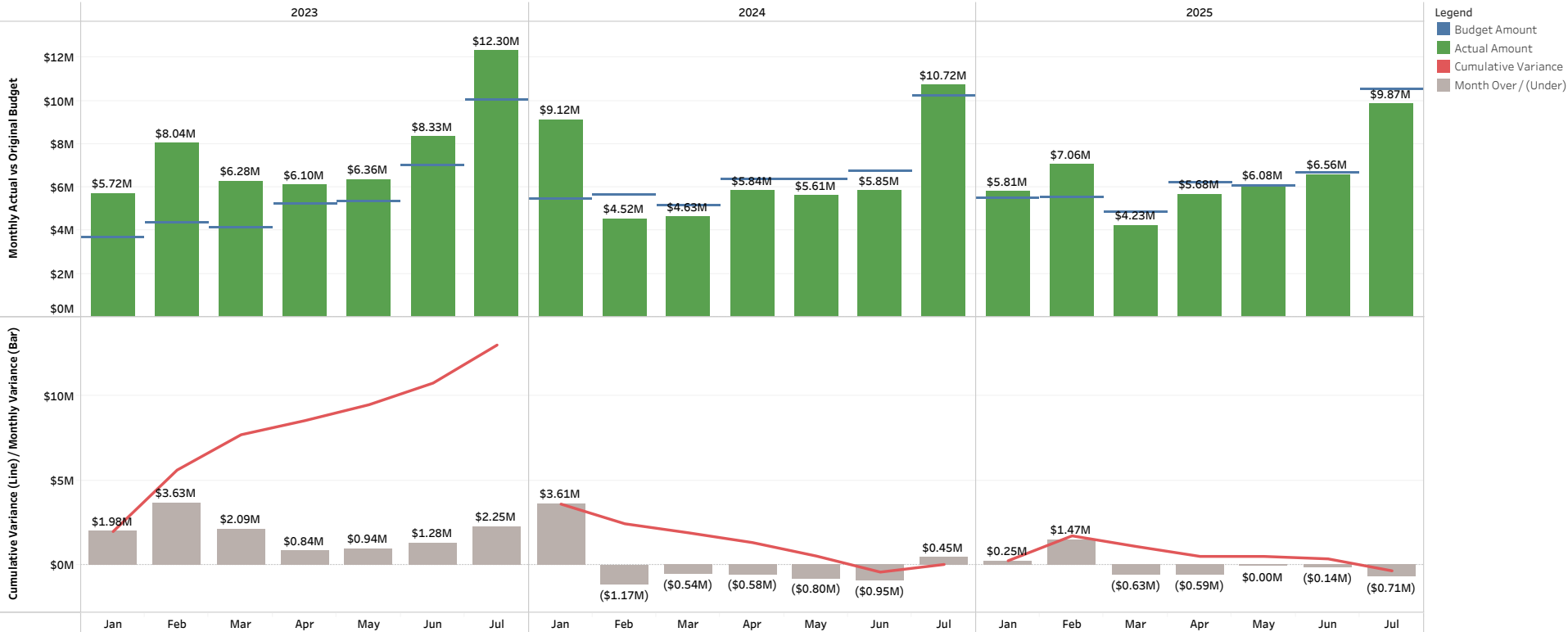
Month, Year  
July 2025

## July 2025

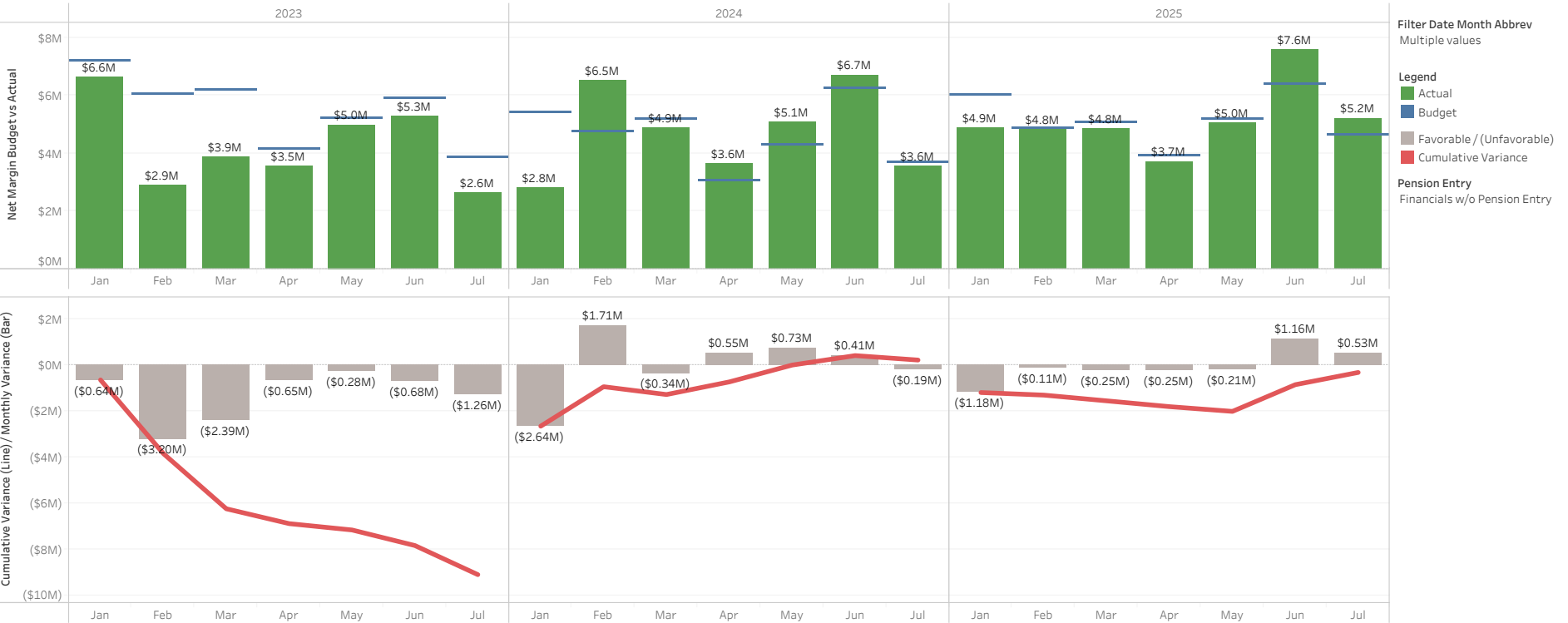


	1	2	3	4	5	6	7	8	9	10	11	12	13	14	15	16	17	18	19	20	21	22	23	24	25	26	27	28	29	30	31
Record High	106	107	106	104	103	104	105	106	109	107	105	106	107	105	103	108	105	103	103	102	105	107	111	107	104	106	107	110	112	110	109
Daily High	102	97	87	75	87	88	95	103	95	91	92	98	103	100	86	87	93	97	90	83	80	88	95	98	94	93	93	95	96	97	91
Daily Avg	81	84	74	69	74	74	75	82	82	78	78	81	85	86	75	73	77	79	77	72	71	73	77	81	81	76	79	81	76	78	79
Daily Low	58	70	57	57	62	54	54	57	64	67	58	61	65	73	61	57	59	59	65	54	62	55	56	58	62	56	65	65	57	60	65
Record Low	45	47	50	46	46	49	48	50	45	48	45	46	52	49	49	47	50	50	50	47	51	49	49	50	50	49	51	50	50	51	47

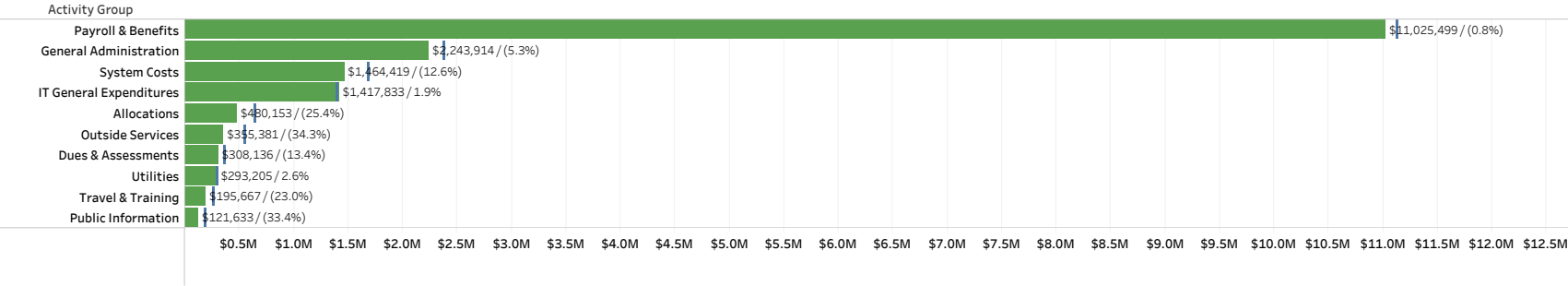
Cumulative Net Power Cost Budget vs Actuals (Original Budget Only): [All](#)



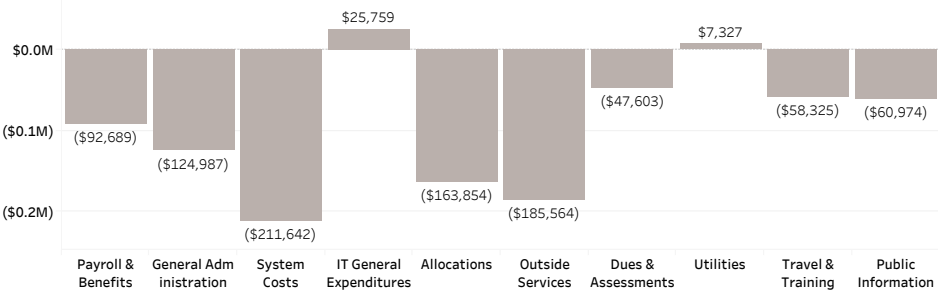
Cumulative Net Margin Original Budget vs Actuals



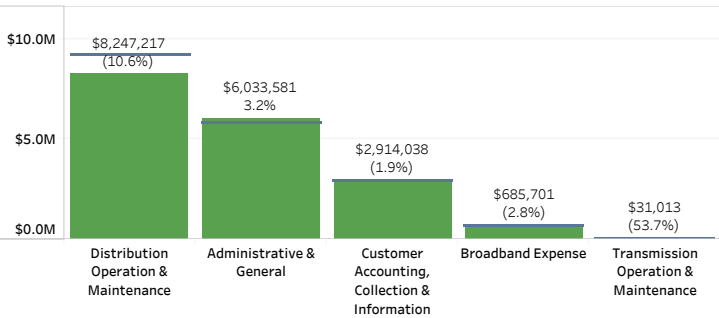
2025 Top 10 YTD O&M Actuals & Original Budget by Activity Group Through July



2025 Top 10, YTD O&M Budget Variance by Activity Group Through July



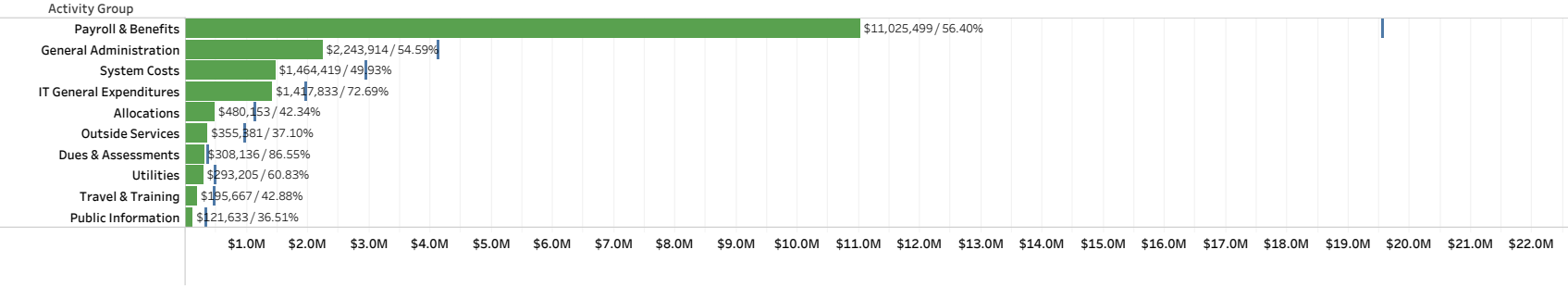
2025 YTD O&M Actuals & Original Budget by Financial Statement Group Through July





2025 Top 10 YTD O&M Actuals & Original Budget by Activity Group Through July

% of Year: 58.33%



Enter Year  
2025

Select Month  
July

Top N - Activity Category  
10

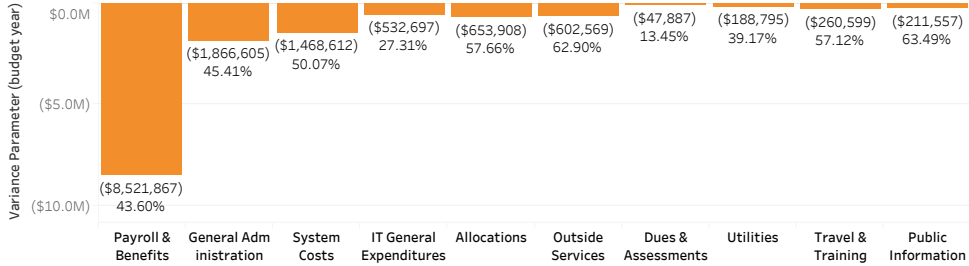
Dept #  
All

Budget Version  
☒ Actuals  
☐ Amended Budget  
☒ Original Budget

Pension Entry  
Financials w/o Pension Ent..

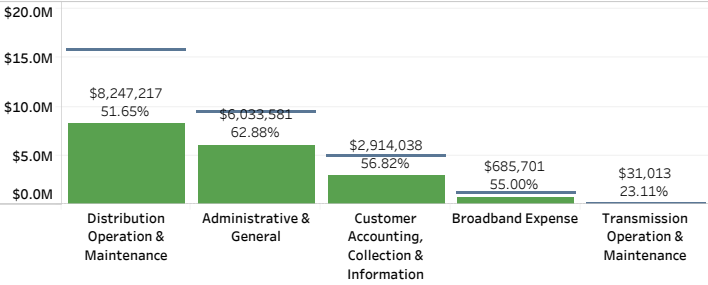
2025 Top 10, Remaining Budget Amount by Activity Group through July

% of Year Remaining: 41.67%



2025 YTD O&M Actuals & Original Budget by Financial Statement Group Through July

% of Year: 58.33%



Legend  
Budget  
YTD Actuals  
Remaining Budget

Capital Drill Down with 2025 Actuals & Original Budget

% of Year: 58.3%

Category	Group	Actual Amount	Budget Amount	% of Budget
Transmission	Transmission Projects	\$638,679	\$953,314	67.00%
Distribution	Capacity & Reliability	\$4,146,826	\$9,125,242	45.44%
	Customer Growth	\$7,175,704	\$9,331,054	76.90%
	General Plant	\$952,542	\$935,496	101.82%
	Other	\$344,094	\$170,634	201.66%
	Repair & Replace	\$1,430,493	\$3,718,451	38.47%
Broadband	Broadband	\$740,112	\$1,417,038	52.23%
General Plant	General Plant	\$240,564	\$1,333,792	18.04%
Information Technology	Information Technology	\$1,132,671	\$3,968,413	28.54%
Other	Other	\$9,380		
Grand Total		\$16,811,065	\$30,953,434	54.31%

Select Year  
2025

Select Month(s)

- ☒ Jan
- ☒ Feb
- ☒ Mar
- ☒ Apr
- ☒ May
- ☒ Jun
- ☒ Jul
- ☐ Aug
- ☐ Sep
- ☐ Oct
- ☐ Nov
- ☐ Dec
- ☒ Budget

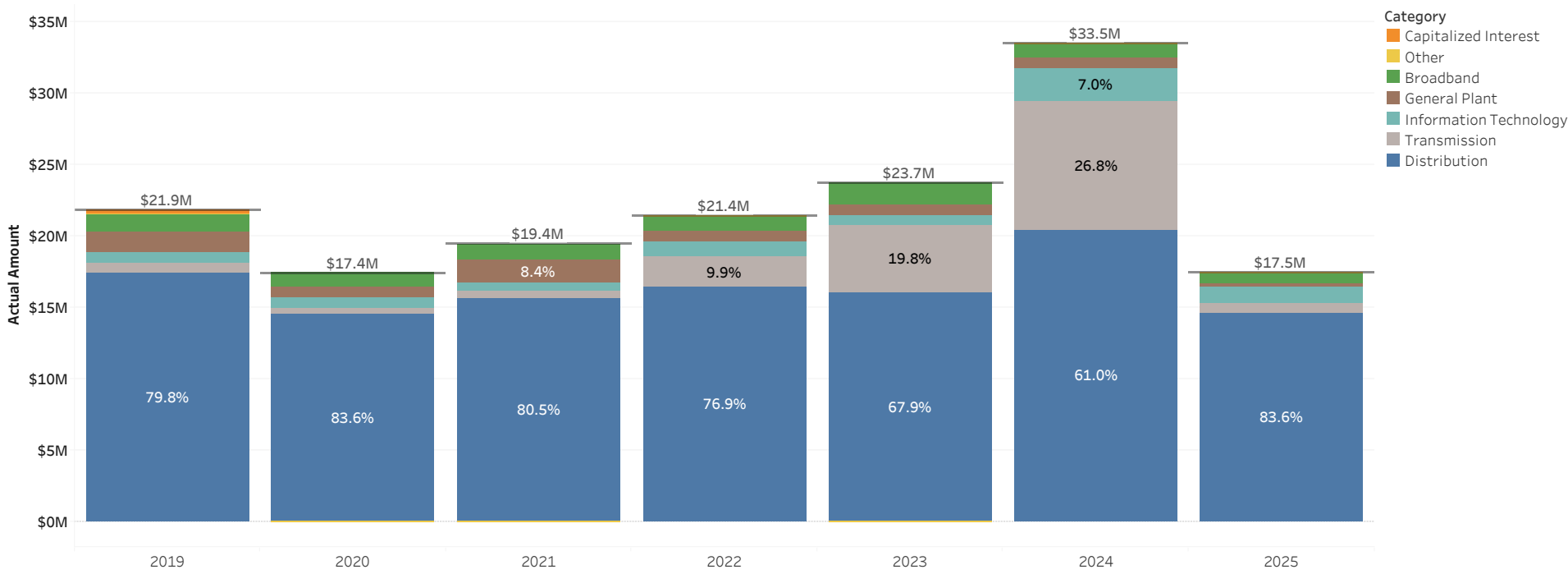
Budget Version

- ☒ Actuals
- ☐ Amended Budget
- ☒ Original Budget

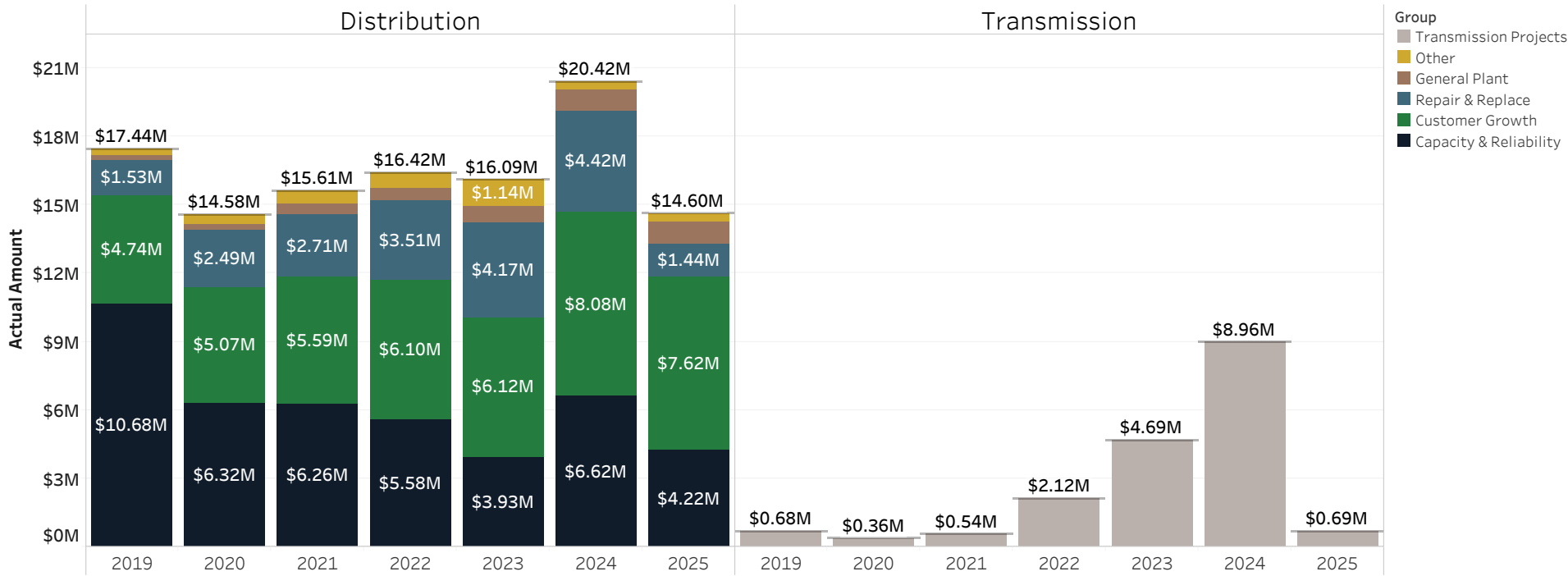
Pension Entry

Financials w/o Pension Entry

# Gross Capital Expenditures by Category (Actuals)

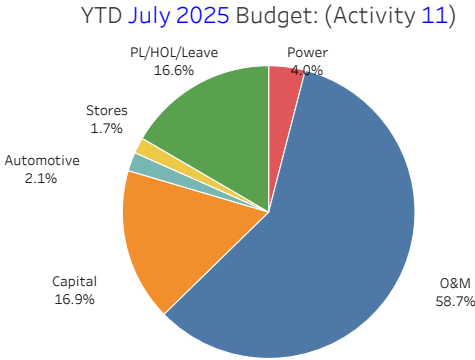


# Gross Capital Expenditures by Group (Actuals)



YTD July 2025 Labor by Category: (Activity 11)  
Actuals & Original Budget

Category	Current Year Actuals	Current Year Budget	Over / (Under)	Current Year % Variance	Prior Year Actual	Prior Year Variance	Prior Year % Variance
Power	\$391,013	\$423,375	(\$32,362)	(7.6%)	\$427,619	(\$36,606)	(8.6%)
O&M	\$6,010,771	\$6,173,665	(\$162,894)	(2.6%)	\$5,869,502	\$141,268	2.4%
Capital	\$2,124,578	\$1,775,271	\$349,307	19.7%	\$2,095,345	\$29,233	1.4%
Automotive	\$196,442	\$219,138	(\$22,696)	(10.4%)	\$183,438	\$13,004	7.1%
PL/HOL/Leave	\$1,445,071	\$1,745,216	(\$300,144)	(17.2%)	\$1,362,979	\$82,092	6.0%
Stores	\$184,016	\$183,914	\$102	0.1%	\$181,767	\$2,249	1.2%
Preliminary Survey			\$0		(\$8,279)	\$8,279	(100.0%)
Grand Total	\$10,351,891	\$10,520,578	(\$168,688)	(1.6%)	\$10,112,952	\$238,938	2.4%



Activity 11

Enter Year 2025

Select Month July

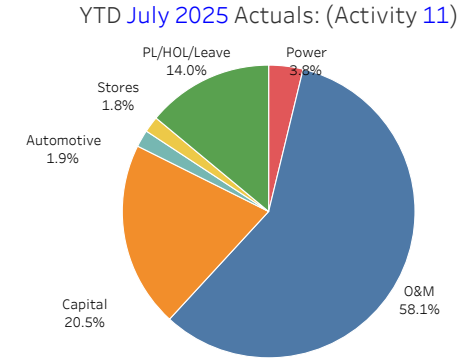
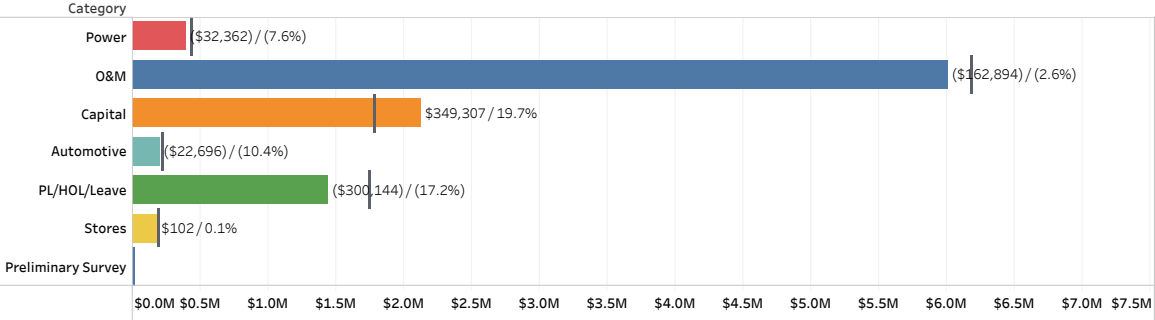
**Category**

- Power
- O&M
- Capital
- Automotive
- PL/HOL/Leave
- Stores
- Preliminary Survey

**Budget Version**

- ☒ Actuals
- ☐ Amended Budget
- ☒ Original Budget

YTD July 2025 Labor by Category: (Activity 11)  
(Amount displayed is actuals minus budget / % variance from budget)

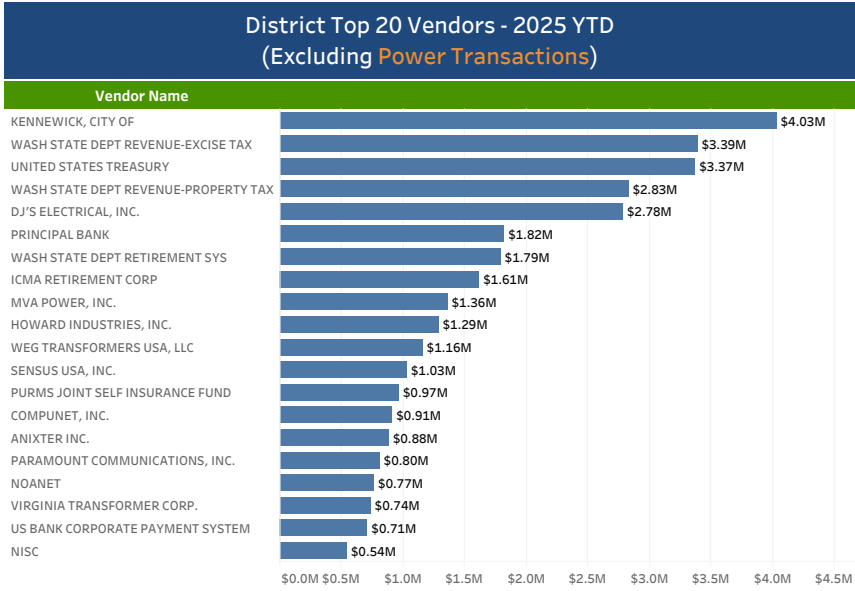
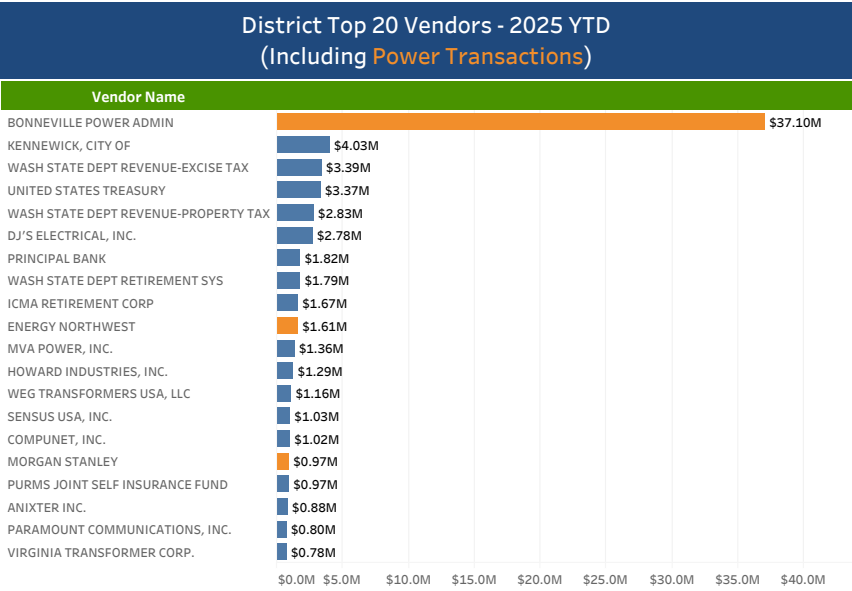


**Pension Entry**  
Financials w/o Pension Entry

**Go to the Monthly View**

**Monthly Multi-Year Graphs**

**Cumulative Multi-Year Graphs**

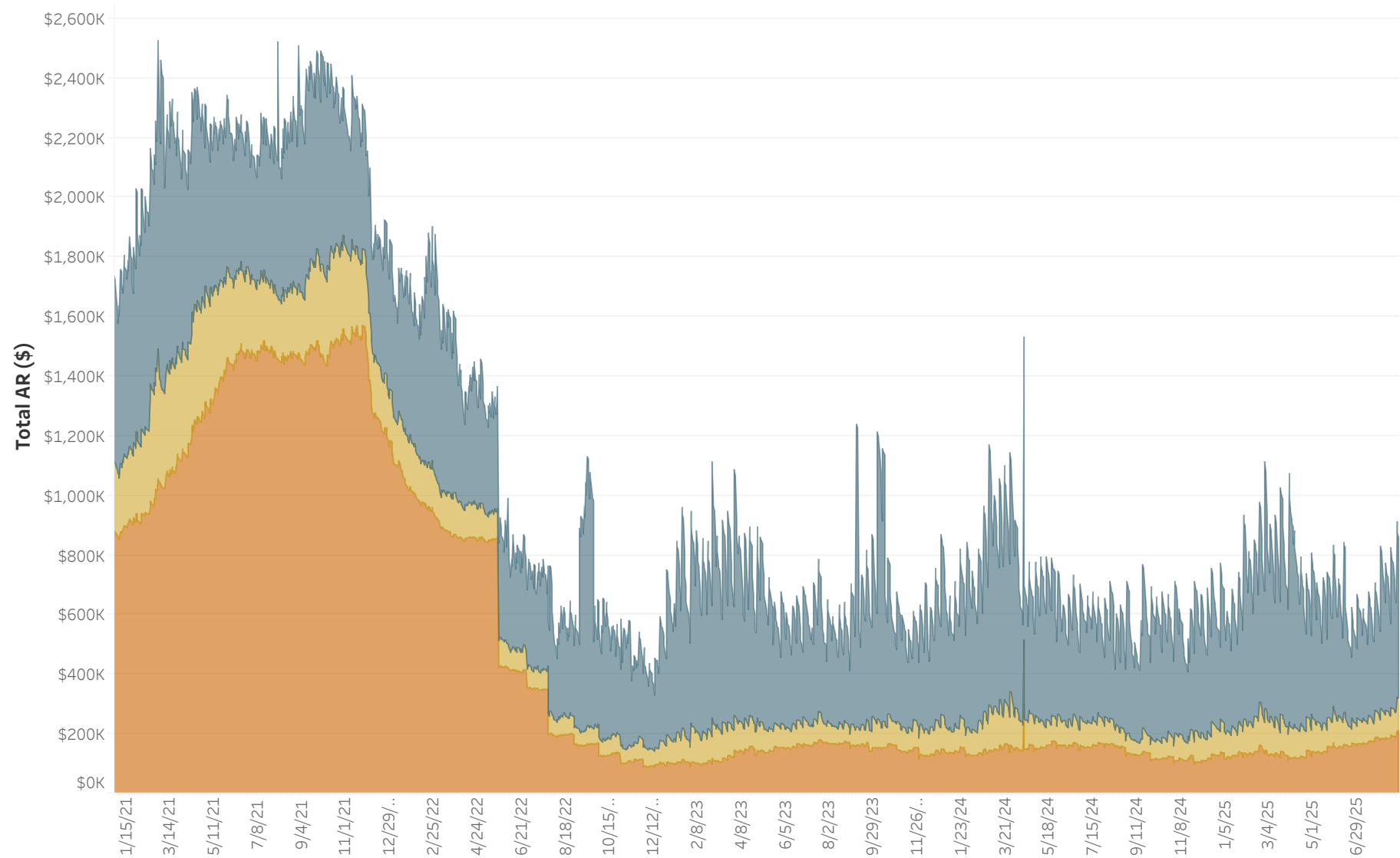


Year  
2025

Top N Vendor  
20

Past Due AR in Dollars for Selected Revenue Classes:

All  
Balance Aging: 30 Days | 60 Days | 90+ Days



Consumer Class Selection:

Regular

Revenue Class Selection:

All

Service Status:

All

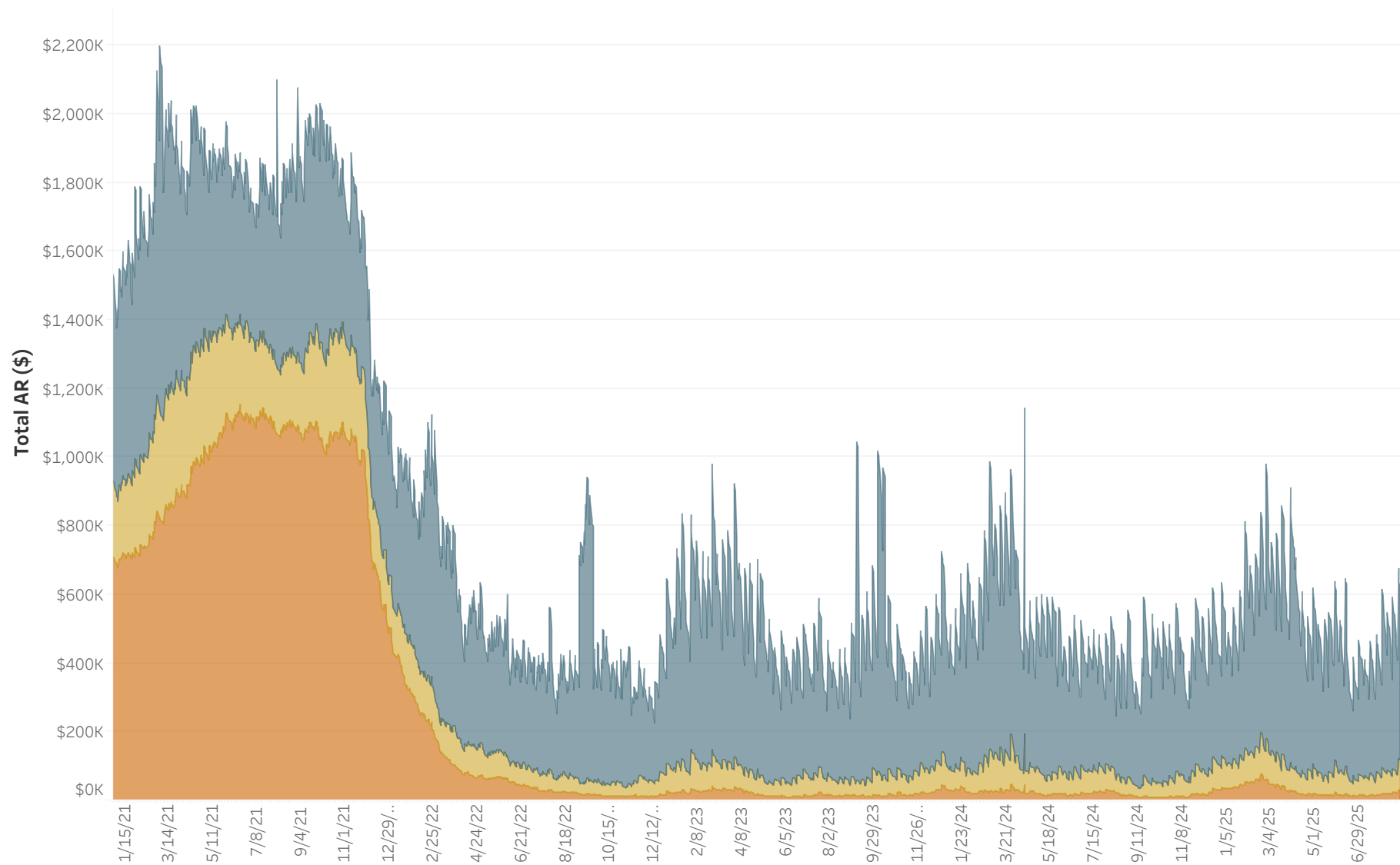
	Accounts	Dollars
30 Days	3,806	\$542,575
60 Days	871	\$110,085
90+ Days	1,065	\$208,110
Past Due	5,742	\$860,770
Total AR	54,758	\$8,158,017

AR data as of 8/24/2025. Data source is AR Balance History Tableau report view.

# Past Due AR in Dollars for Selected Revenue Classes:

All  
Balance Aging: 30 Days | 60 Days | 90+ Days

Consumer Class Selection:		Accounts	Dollars
Regular	30 Days	3,571	\$505,639
	60 Days	746	\$86,993
	90+ Days	376	\$30,423
Revenue Class Selection:			
All		Past Due	4,693 \$623,054
Service Status:			
Active		Total AR	52,771 \$7,896,142



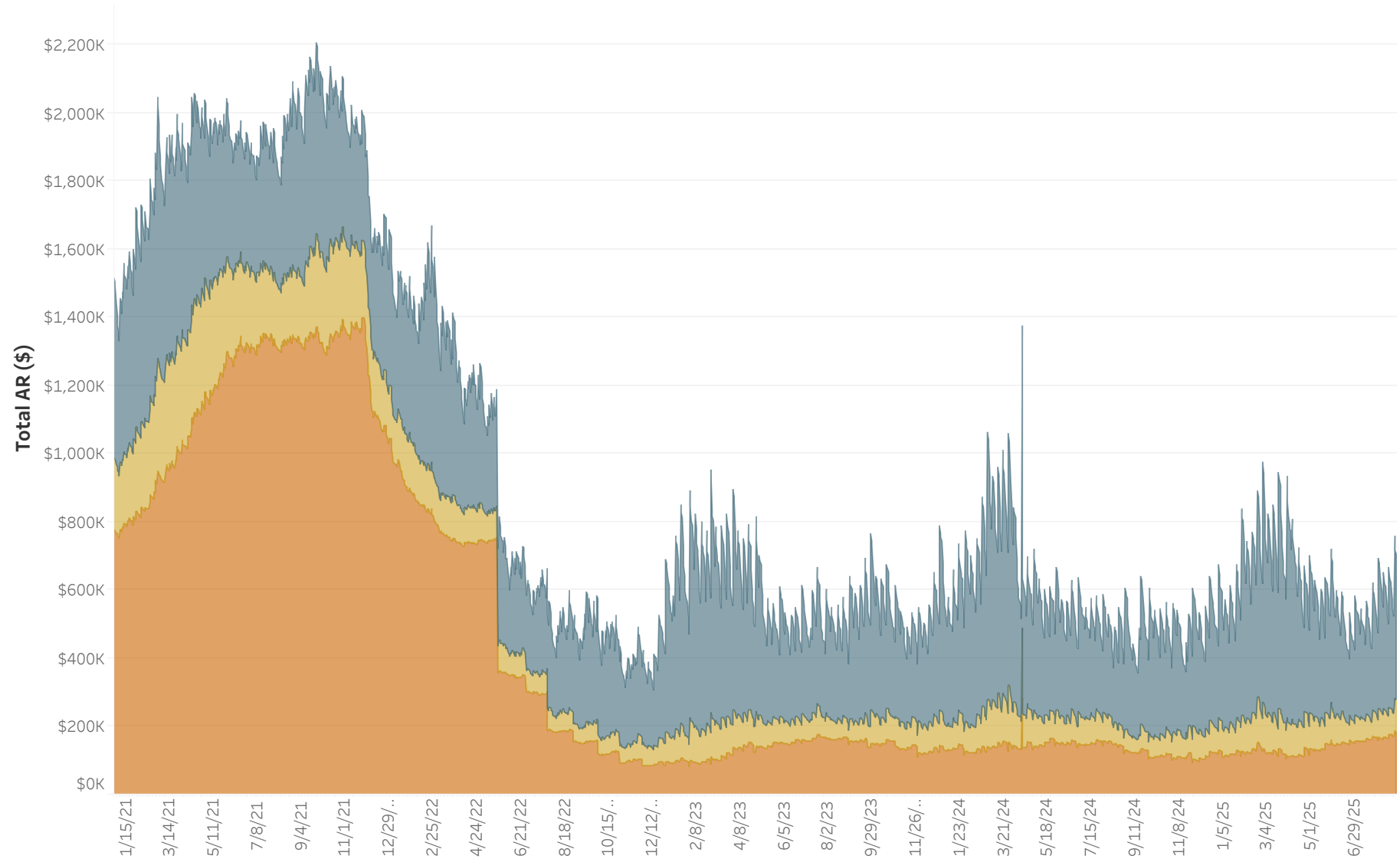
AR data as of 8/24/2025. Data source is AR Balance History Tableau report view.



Past Due AR in Dollars for Selected Revenue Classes:

Residential

Balance Aging: 30 Days | 60 Days | 90+ Days



Consumer Class Selection:

Regular

Revenue Class Selection:

Residential

Service Status:

All

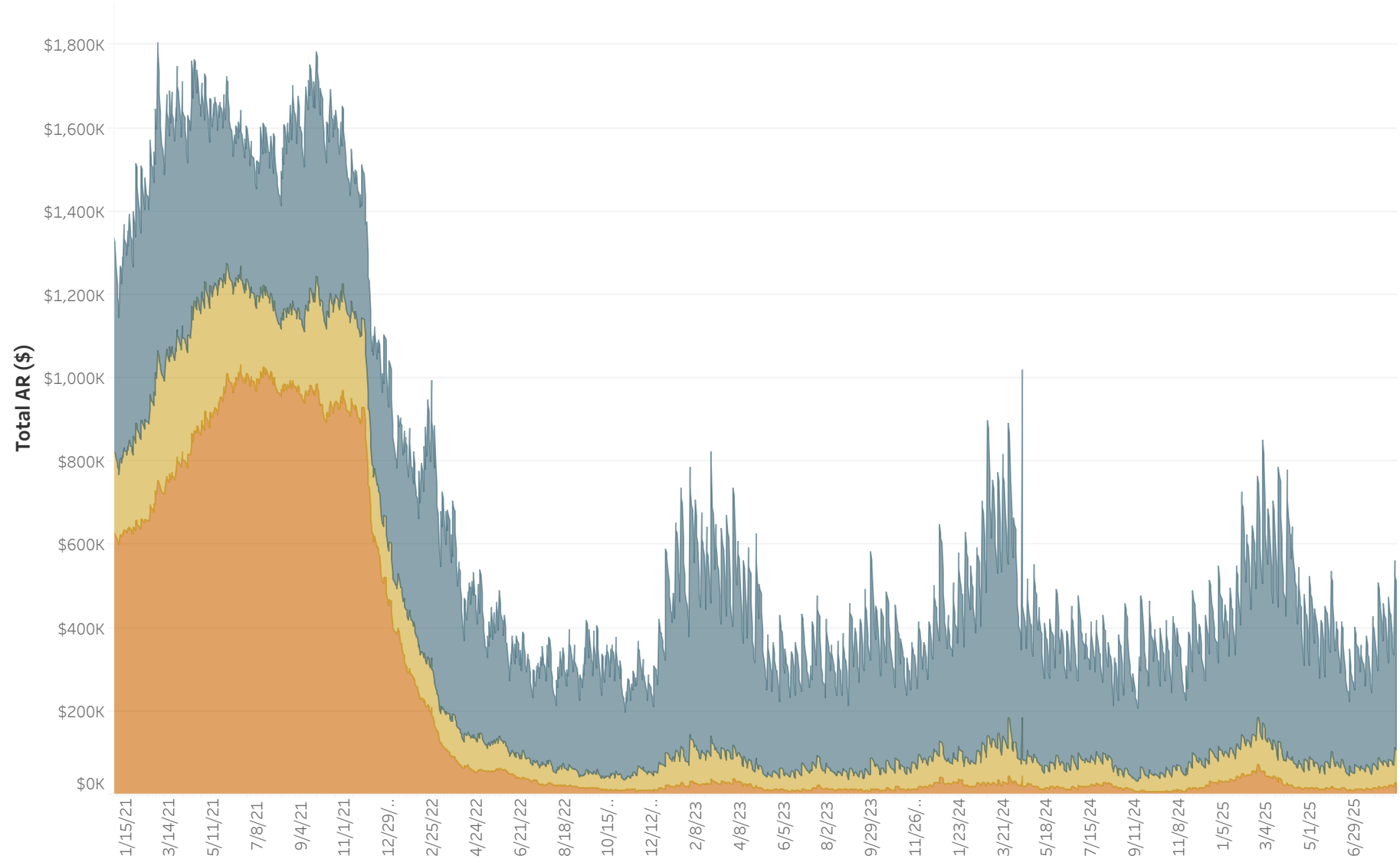
	Accounts	Dollars
30 Days	3,302	\$427,600
60 Days	818	\$94,305
90+ Days	973	\$184,017
Past Due	5,093	\$705,922
Total AR	45,429	\$3,943,504

AR data as of 8/24/2025. Data source is AR Balance History Tableau report view.

Past Due AR in Dollars for Selected Revenue Classes:

Residential

Balance Aging: 30 Days | 60 Days | 90+ Days



Consumer Class Selection:

Regular

Revenue Class Selection:

Residential

Service Status:

Active

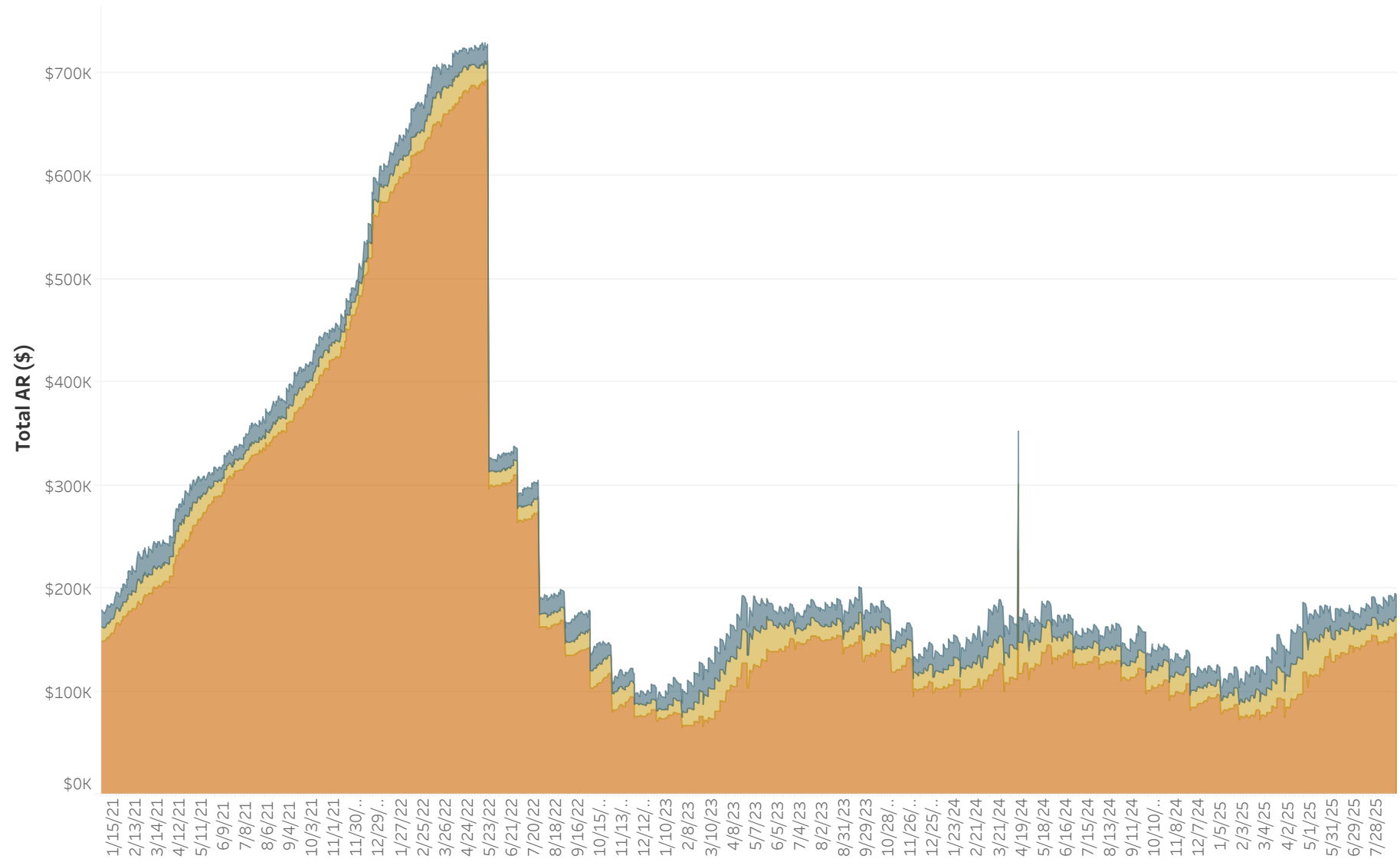
	Accounts	Dollars
30 Days	3,098	\$404,488
60 Days	697	\$78,761
90+ Days	328	\$28,514
Past Due	4,123	\$511,764
Total AR	43,586	\$3,728,569

AR data as of 8/24/2025. Data source is AR Balance History Tableau report view.

Past Due AR in Dollars for Selected Revenue Classes:

Residential

Balance Aging: 30 Days | 60 Days | 90+ Days



Consumer Class Selection:

Regular

Revenue Class Selection:

Residential

Service Status:

Inactive

	Accounts	Dollars
30 Days	196	\$22,586
60 Days	120	\$15,473
90+ Days	645	\$155,503
Past Due	961	\$193,562
Total AR	1,674	\$210,088

AR data as of 8/24/2025. Data source is AR Balance History Tableau report view.