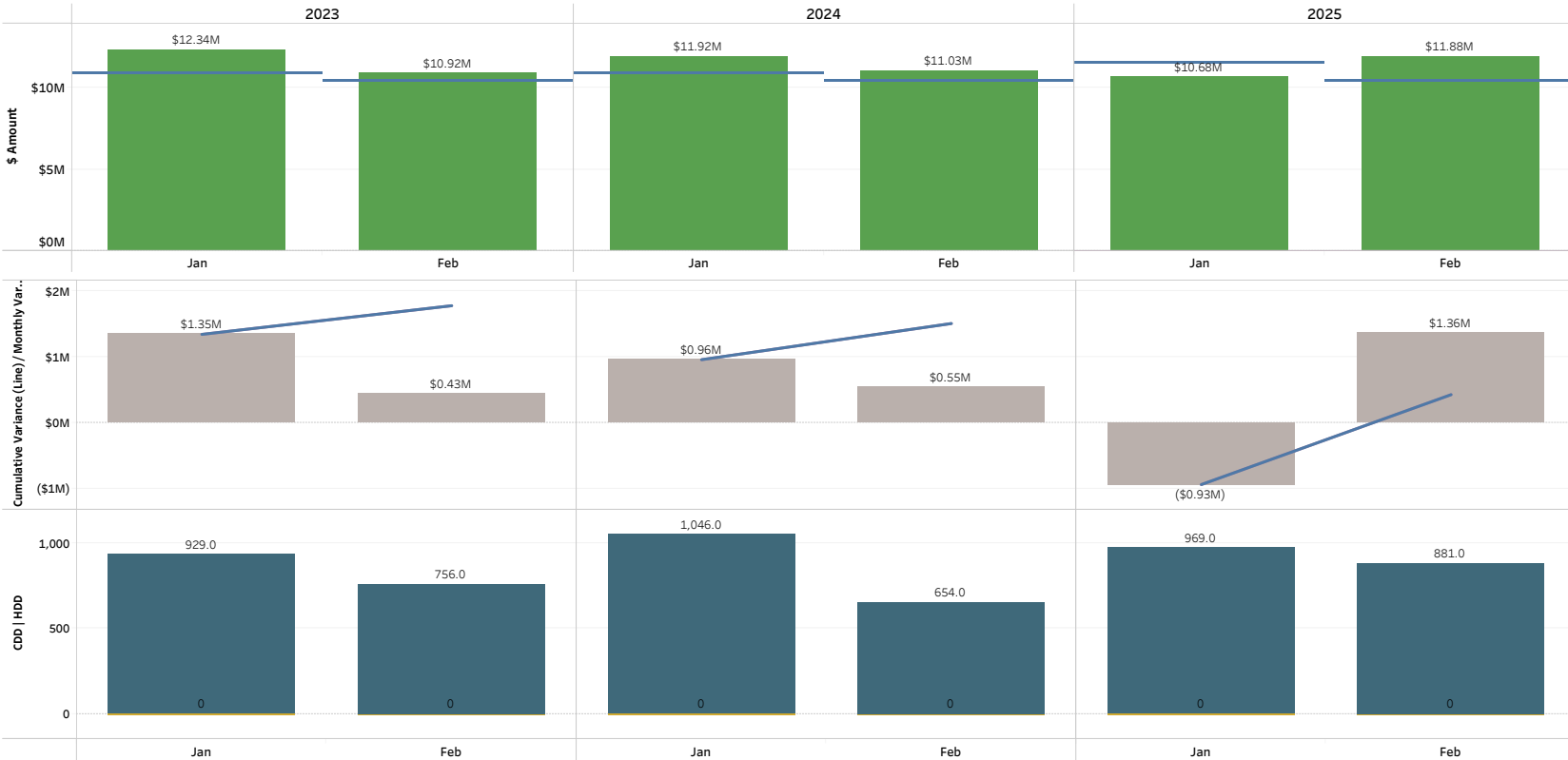


Cumulative Retail Revenue Budget vs Actuals (Original and Amended Budget): All



Rate Class
All

Filter Date Year
Multiple values

Filter Date Month
Multiple values

Legend

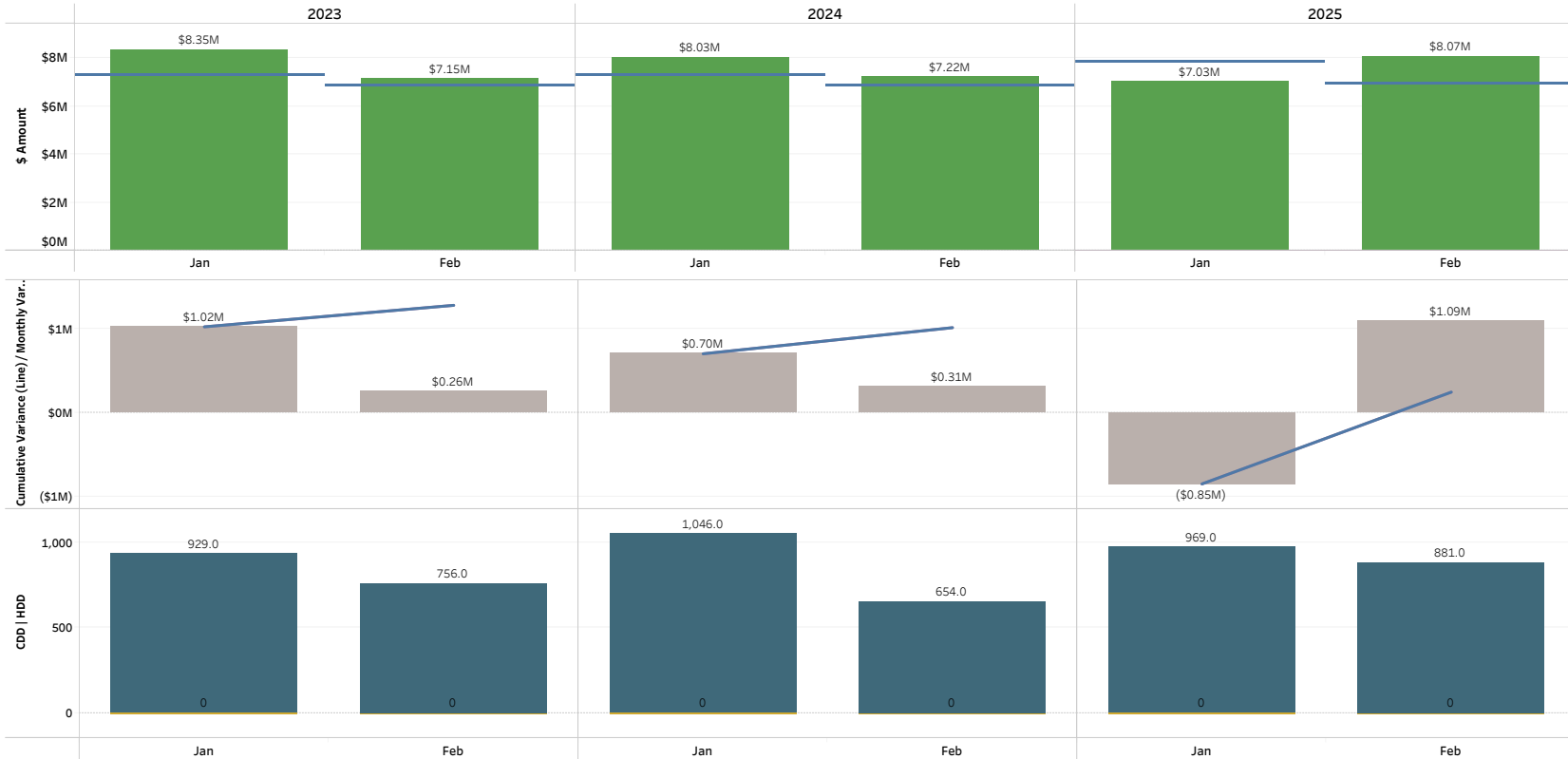
- Budget
- Amended Budget
- Actual
- Cumulative Variance Original
- Cumulative Variance Amended
- Month Over / (Under)
- Heating Degree Days
- Cooling Degree Days

Note: Cumulative budget amendment changes are reflected in the month of September.

Cooling Degree Days (CDD) are a measure of how hot the temperature was on a given day or during a period of days. CDD's quantify the demand for energy needed to cool buildings. The higher the CDD's, the hotter the region is.

Heating Degree Days (HDD) are a measure of how cold the temperature was on a given day or during a period of days. HDD's quantify the demand for energy needed to heat buildings. The higher the HDD's, the colder the region is.

Cumulative Retail Revenue Budget vs Actuals (Original and Amended Budget): Residential Sales



Rate Class
Residential Sales

Filter Date Year
Multiple values

Filter Date Month
Multiple values

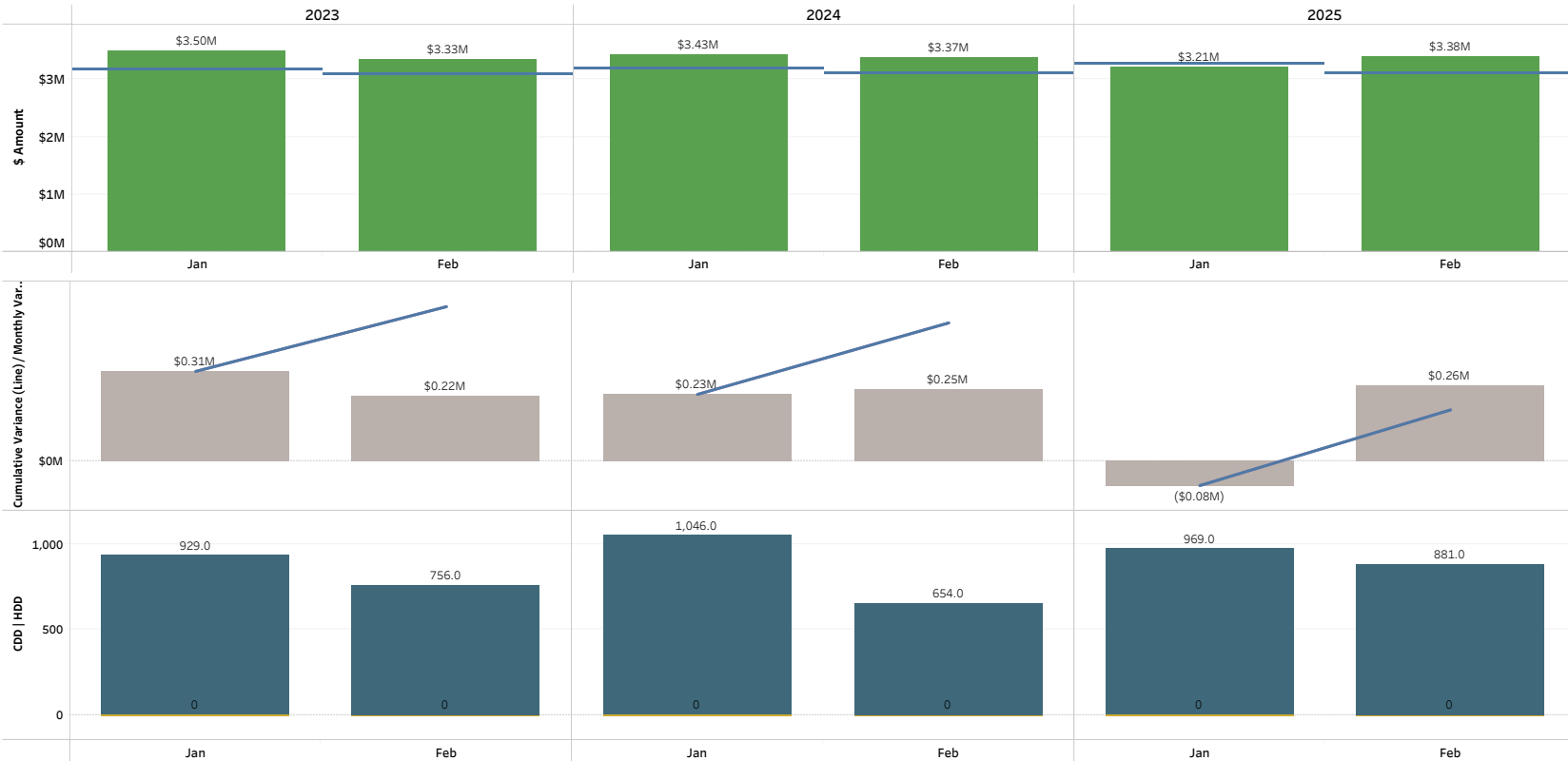
- Legend
- Budget
 - Amended Budget
 - Actual
 - Cumulative Variance Original
 - Cumulative Variance Amended
 - Month Over / (Under)
 - Heating Degree Days
 - Cooling Degree Days

Note: Cumulative budget amendment changes are reflected in the month of September.

Cooling Degree Days (CDD) are a measure of how hot the temperature was on a given day or during a period of days. CDD's quantify the demand for energy needed to cool buildings. The higher the CDD's, the hotter the region is.

Heating Degree Days (HDD) are a measure of how cold the temperature was on a given day or during a period of days. HDD's quantify the demand for energy needed to heat buildings. The higher the HDD's, the colder the region is.

Cumulative Retail Revenue Budget vs Actuals (Original and Amended Budget): Large General Service Sales, Medium General Service Sales, Small General Service Sales



Rate Class
Multiple values

Filter Date Year
Multiple values

Filter Date Month
Multiple values

Legend
 Budget
 Amended Budget
 Actual
 Cumulative Variance Original
 Cumulative Variance Amended
 Month Over / (Under)
 Heating Degree Days
 Cooling Degree Days

Note: Cumulative budget amendment changes are reflected in the month of September.

Cooling Degree Days (CDD) are a measure of how hot the temperature was on a given day or during a period of days. CDD's quantify the demand for energy needed to cool buildings. The higher the CDD's, the hotter the region is.

Heating Degree Days (HDD) are a measure of how cold the temperature was on a given day or during a period of days. HDD's quantify the demand for energy needed to heat buildings. The higher the HDD's, the colder the region is.

Cumulative Retail Revenue Budget vs Actuals (Original and Amended Budget): Large Irrigation Sales

Rate Class
Large Irrigation Sales

Filter Date Year
Multiple values

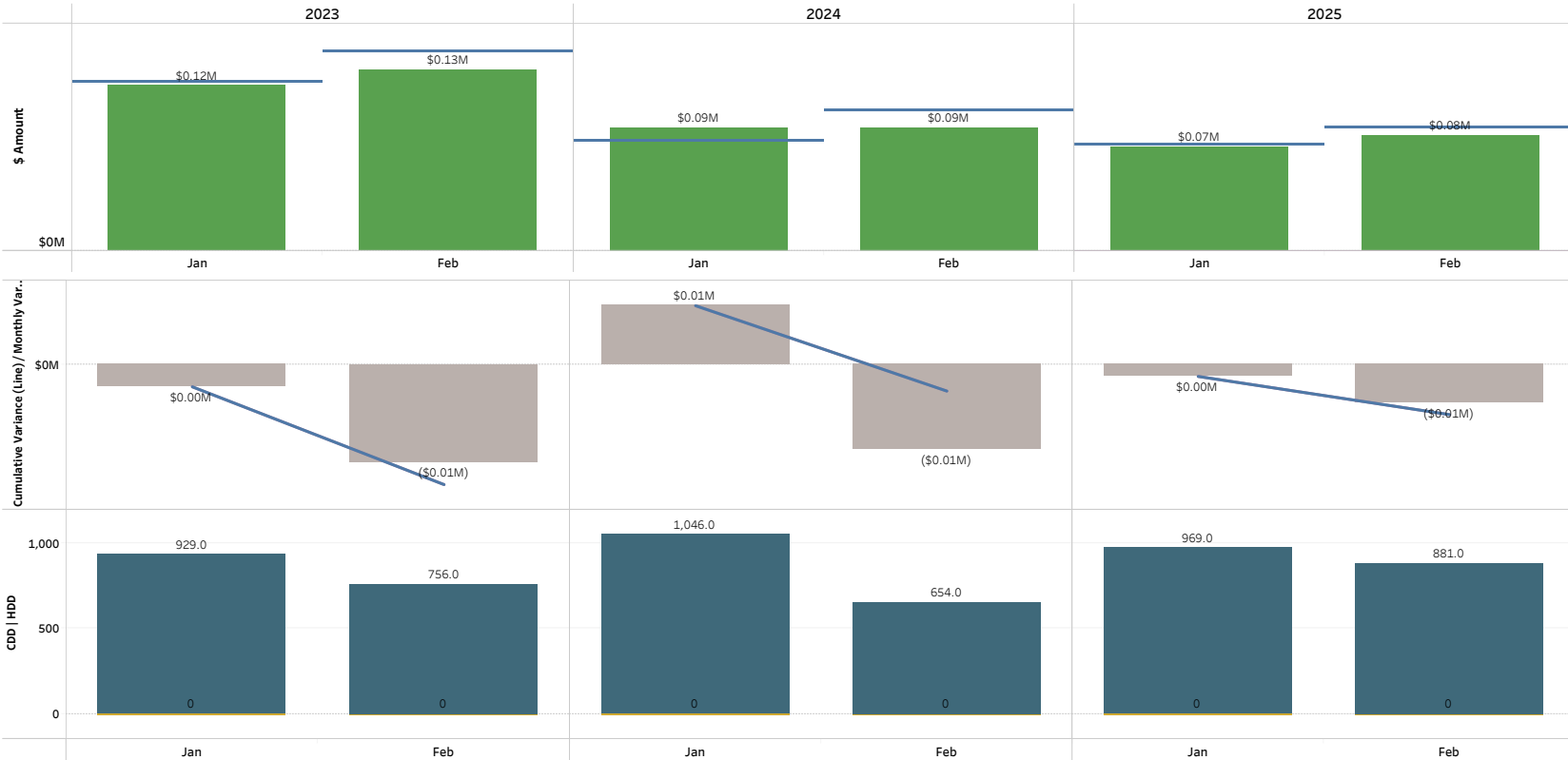
Filter Date Month
Multiple values

- Legend
- Budget
 - Amended Budget
 - Actual
 - Cumulative Variance Original
 - Cumulative Variance Amended
 - Month Over / (Under)
 - Heating Degree Days
 - Cooling Degree Days

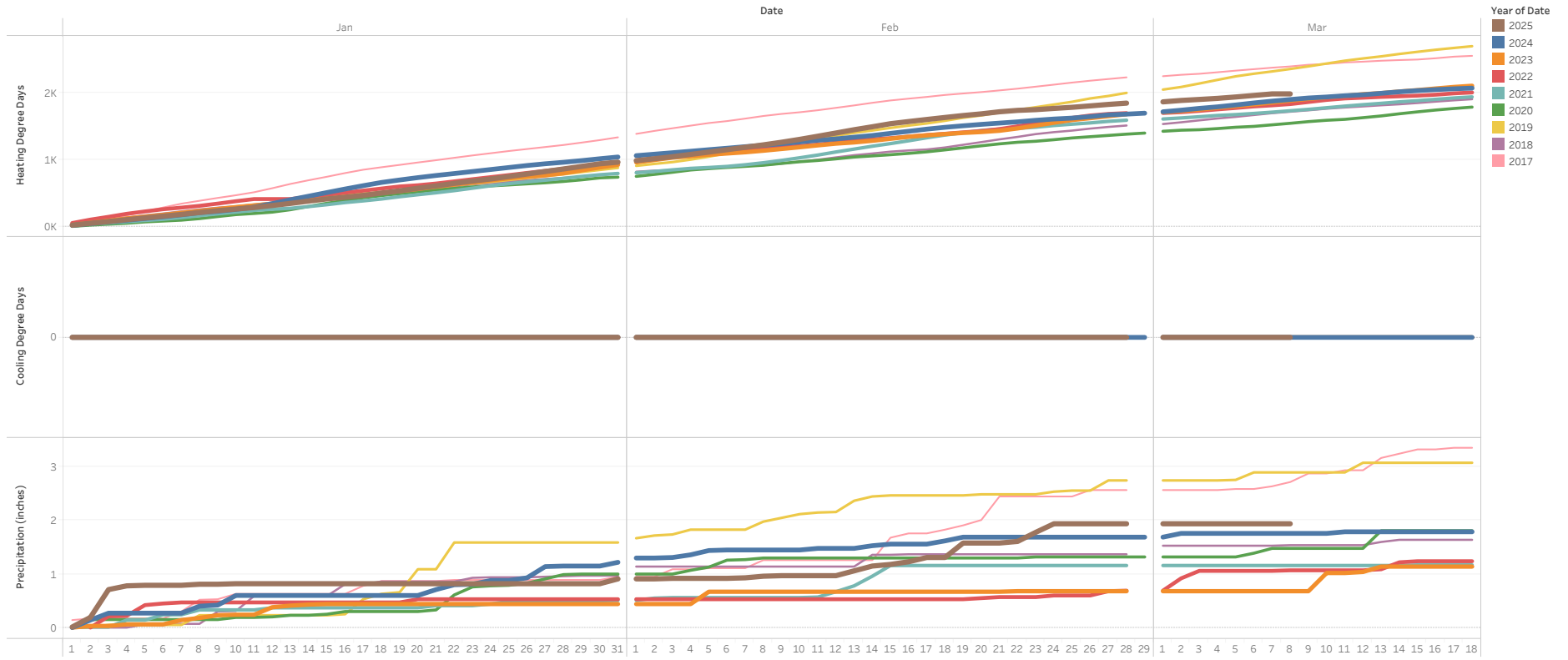
Note: Cumulative budget amendment changes are reflected in the month of September.

Cooling Degree Days (CDD) are a measure of how hot the temperature was on a given day or during a period of days. CDD's quantify the demand for energy needed to cool buildings. The higher the CDD's, the hotter the region is.

Heating Degree Days (HDD) are a measure of how cold the temperature was on a given day or during a period of days. HDD's quantify the demand for energy needed to heat buildings. The higher the HDD's, the colder the region is.



Cumulative Daily Weather by Year

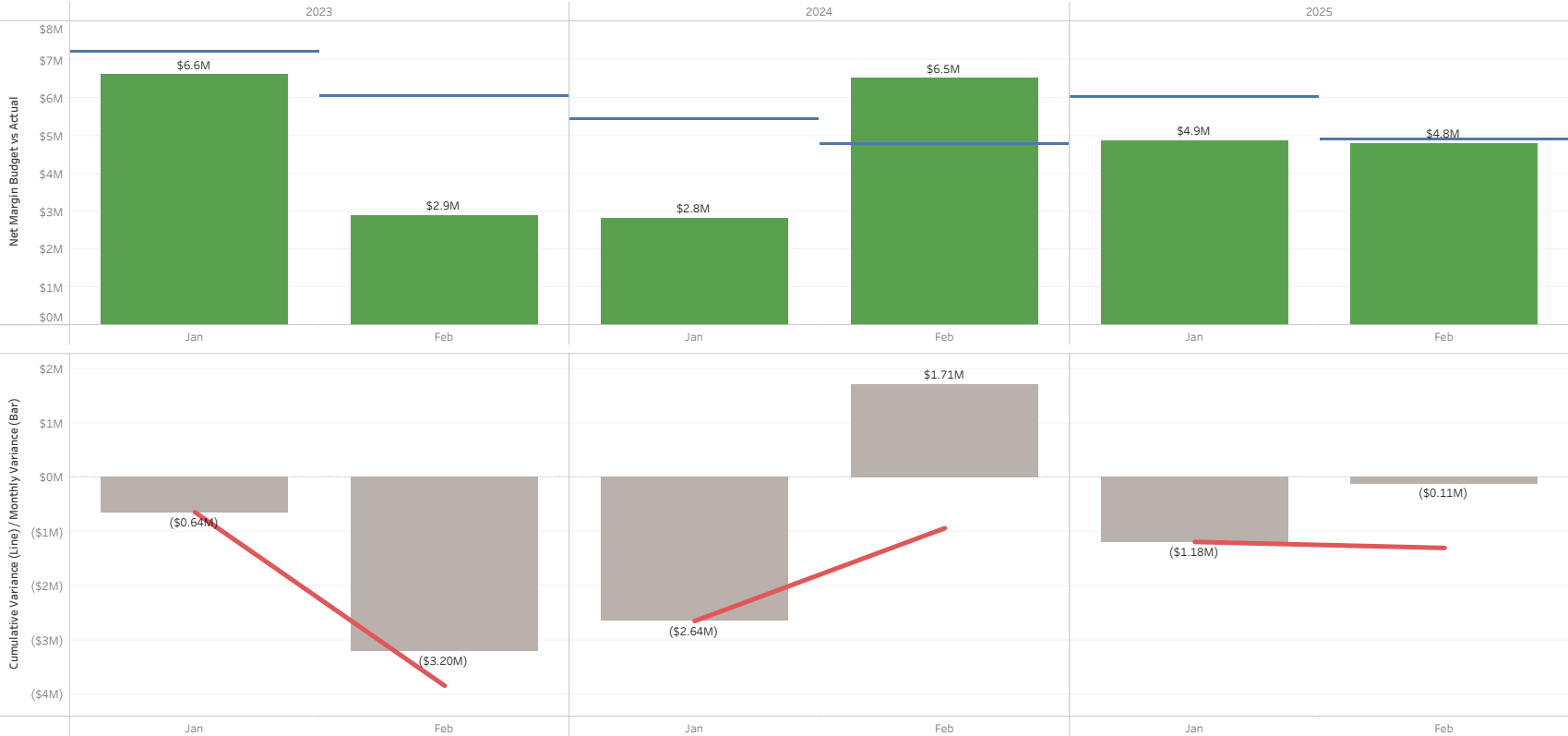


Daily weather at Tri-Cities Airport (USW00024163), sourced from NOAA website, <https://www.ncdc.noaa.gov/cdo-web/search?datasetid=GHCND>

Cumulative Net Power Cost Budget vs Actuals (Original Budget Only): All



Cumulative Net Margin Original Budget vs Actuals



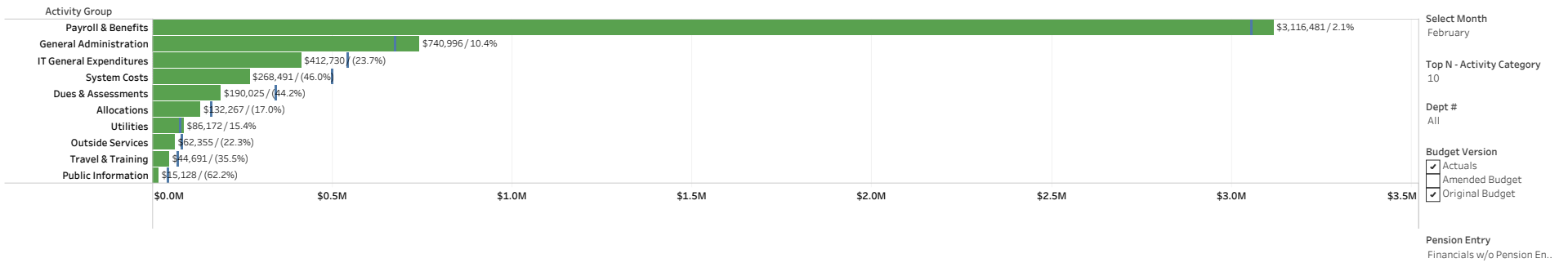
Filter Date Year
Multiple values

Filter Date Month Abbrev
Multiple values

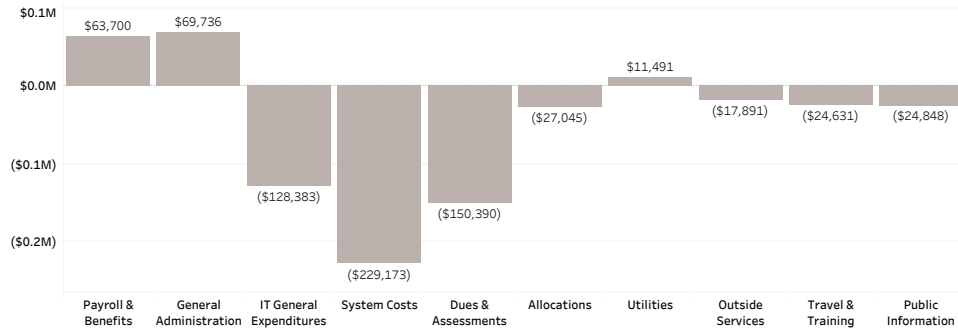
Legend
 - Actual (Green)
 - Budget (Blue)
 - Favorable / (Unfavorable) (Grey)
 - Cumulative Variance (Red)

Pension Entry
Financials w/o Pension Entry

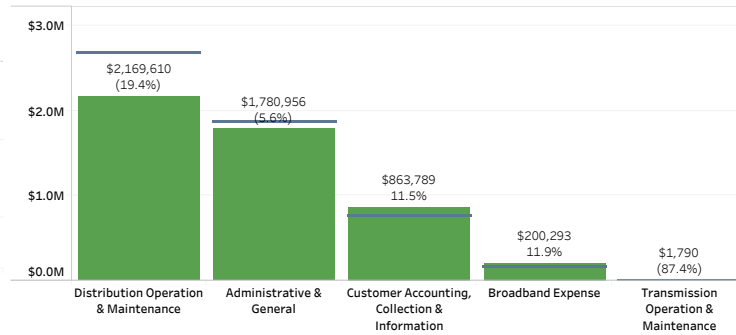
2025 Top 10 YTD O&M Actuals & Original Budget by Activity Group Through February



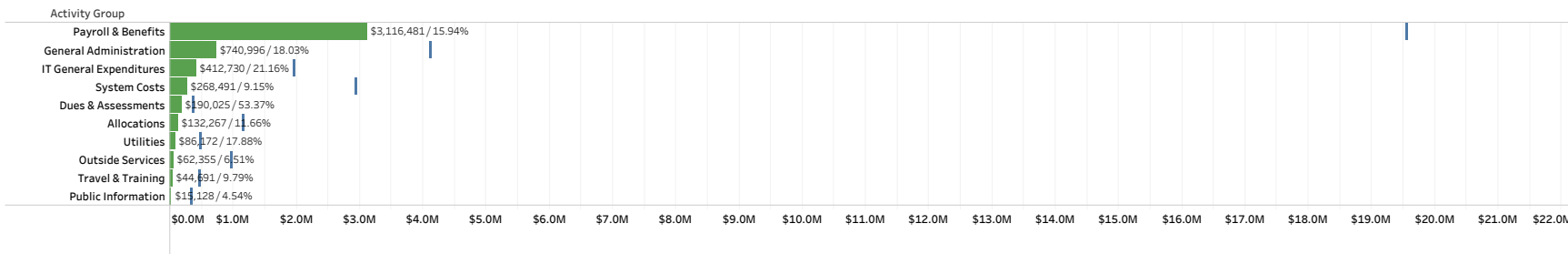
2025 Top 10, YTD O&M Budget Variance by Activity Group Through February



2025 YTD O&M Actuals & Original Budget by Financial Statement Group Through February



2025 Top 10 YTD O&M Actuals & Original Budget by Activity Group Through February
 % of Year: 16.67%



Enter Year
2025

Select Month
February

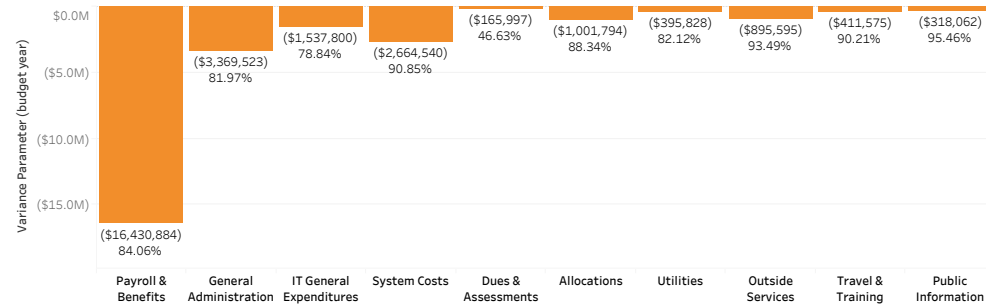
Top N - Activity Category
10

Dept #
All

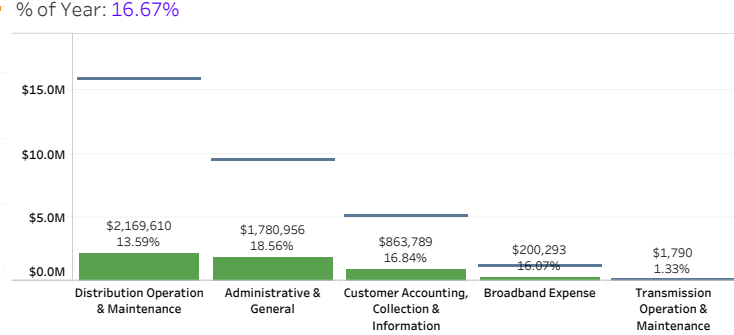
Budget Version
 Actuals
 Amended Budget
 Original Budget

Pension Entry
Financials w/o Pension Ent..

2025 Top 10, Remaining Budget Amount by Activity Group through February
 % of Year Remaining: 83.33%



2025 YTD O&M Actuals & Original Budget by Financial Statement Group Through February
 % of Year: 16.67%



Legend
 Budget
 YTD Actuals
 Remaining Budget

Capital Drill Down with 2025 Actuals & Original Budget

% of Year: 16.7%

Category	Group	Actual Amount	Budget Amount	% of Budget
Transmission	Transmission Projects	\$470,895	\$953,314	49.40%
Distribution	Capacity & Reliability	\$832,302	\$9,125,242	9.12%
	Customer Growth	\$1,183,857	\$9,331,054	12.69%
	General Plant	\$42,921	\$935,496	4.59%
	Other	\$5,091	\$170,634	2.98%
	Repair & Replace	\$307,337	\$3,718,451	8.27%
Broadband	Broadband	\$82,028	\$1,417,038	5.79%
General Plant	General Plant	\$148,477	\$1,333,792	11.13%
Information Technology	Information Technology	\$409,275	\$3,968,413	10.31%
Other	Other	\$4,987		
Grand Total		\$3,487,171	\$30,953,434	11.27%

Select Year

2025

Select Month(s)

- Jan
- Feb
- Mar
- Apr
- May
- Jun
- Jul
- Aug
- Sep
- Oct
- Nov
- Dec
- Budget

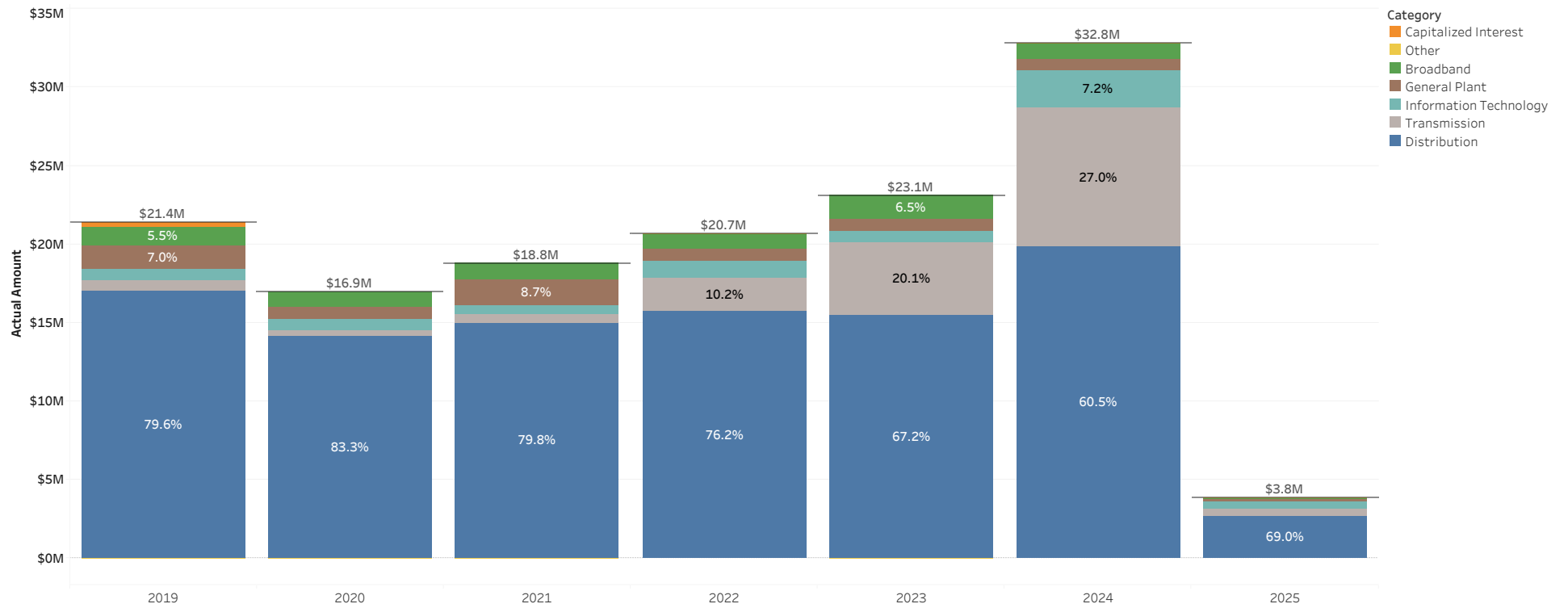
Budget Version

- Actuals
- Amended Budget
- Original Budget

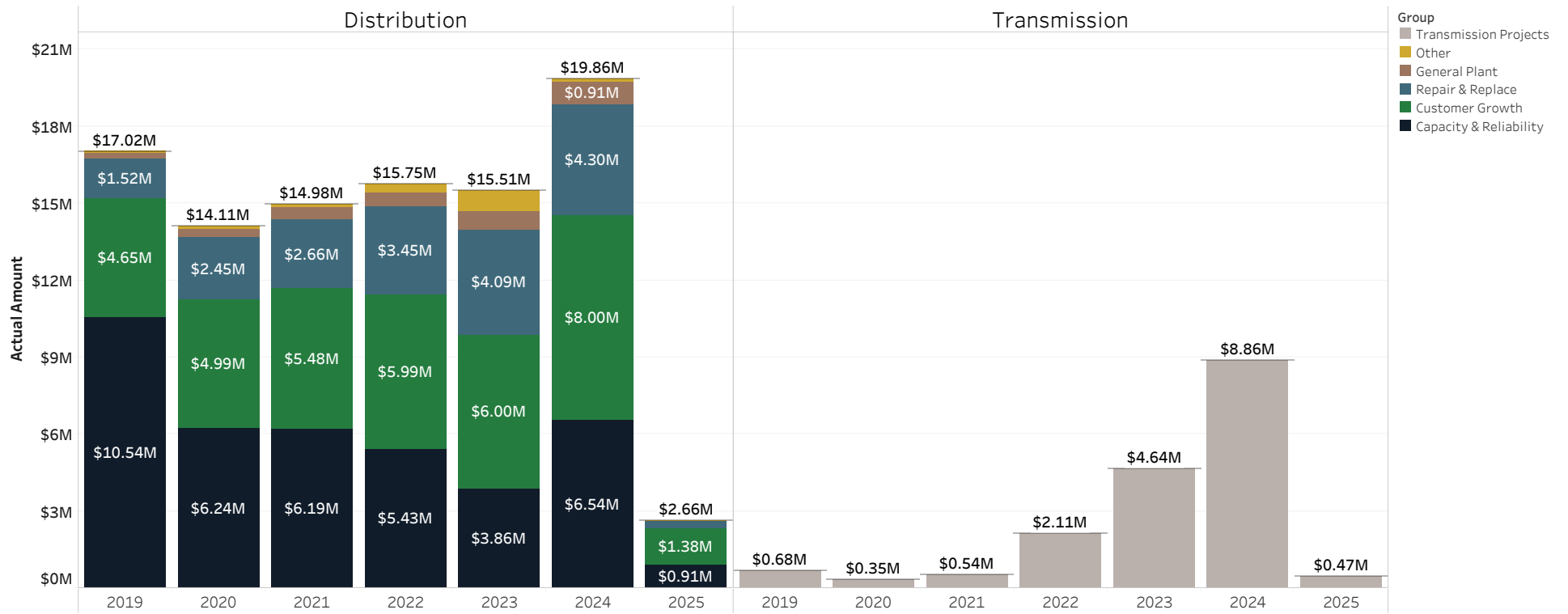
Pension Entry

Financials w/o Pension Entry

Gross Capital Expenditures by Category (Actuals)



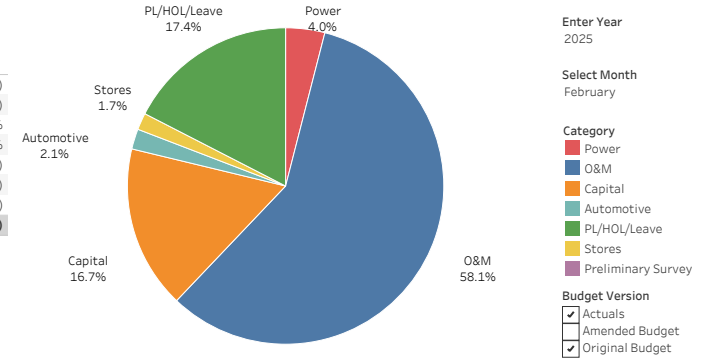
Gross Capital Expenditures by Group (Actuals)



YTD February 2025 Labor by Category: (Activity 11)
Actuals & Original Budget

Category	Current Year Actuals	Current Year Budget	Variance Parameter (year)	Variance % Parameter (Year)	Prior Year Actual (year)	PY Var (year)	PY % Var (year)
Power	\$106,795	\$115,831	(\$9,037)	(7.8%)	\$119,488	(\$12,694)	(10.6%)
O&M	\$1,573,478	\$1,691,519	(\$118,041)	(7.0%)	\$1,628,695	(\$55,217)	(3.4%)
Capital	\$578,125	\$484,923	\$93,202	19.2%	\$516,592	\$61,533	11.9%
Automotive	\$55,440	\$59,982	(\$4,542)	(7.6%)	\$46,894	\$8,546	18.2%
PL/HOL/Leave	\$414,019	\$507,199	(\$93,180)	(18.4%)	\$429,687	(\$15,668)	(3.6%)
Stores	\$51,668	\$50,340	\$1,329	2.6%	\$52,714	(\$1,046)	(2.0%)
Preliminary Survey			\$0		(\$433)	\$433	(100.0%)
Grand Total	\$2,779,524	\$2,909,794	(\$130,269)	(18.9%)	\$2,793,637	(\$14,112)	(89.5%)

YTD February 2025 Budget: (Activity 11)



Activity 11

Enter Year 2025

Select Month February

Category

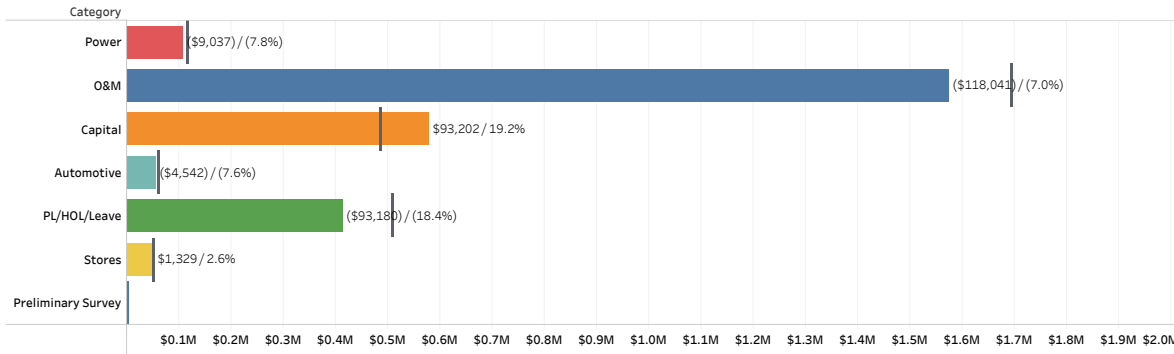
- Power
- O&M
- Capital
- Automotive
- PL/HOL/Leave
- Stores
- Preliminary Survey

Budget Version

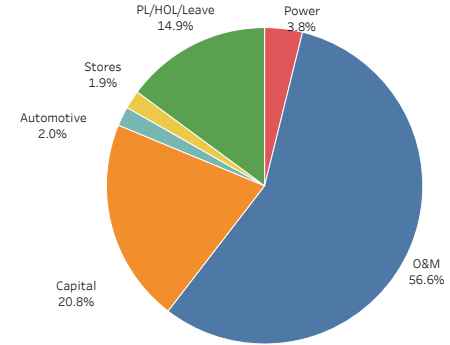
- Actuals
- Amended Budget
- Original Budget

YTD February 2025 Labor by Category: (Activity 11)

(Amount displayed is actuals minus budget / % variance from budget)



YTD February 2025 Actuals: (Activity 11)



Pension Entry All

[Go to the Monthly View](#)

[Monthly Multi-Year Graphs](#)

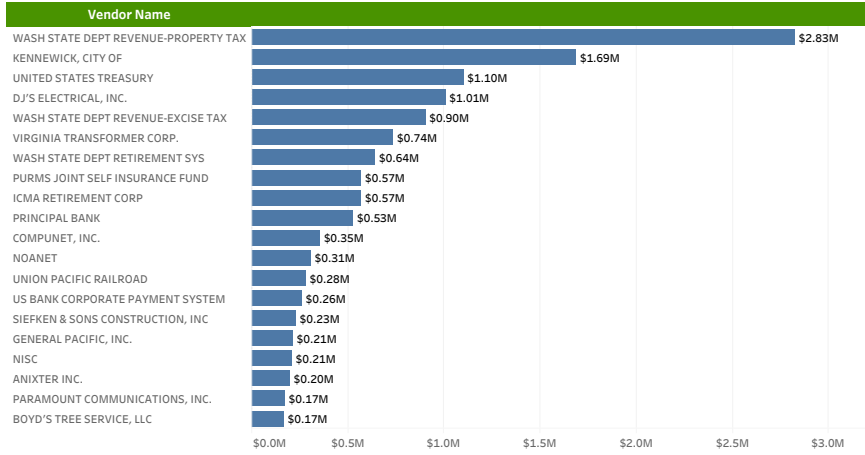
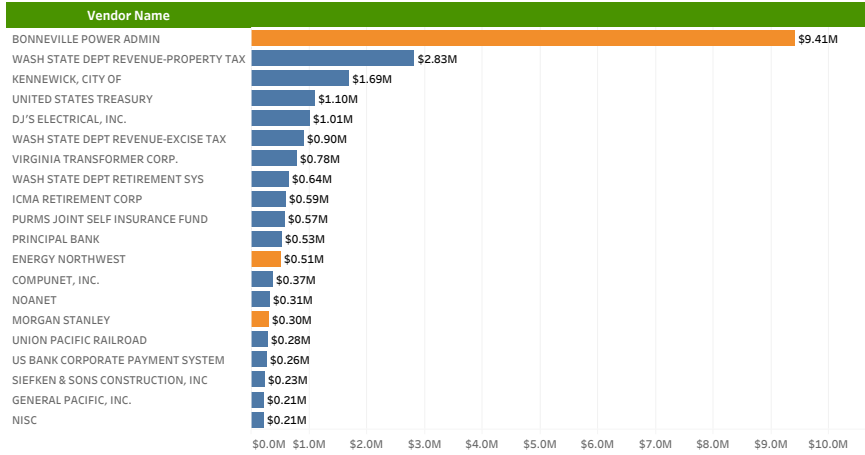
[Cumulative Multi-Year Graphs](#)

District Top 20 Vendors - 2025 YTD
(Including Power Transactions)

District Top 20 Vendors - 2025 YTD
(Excluding Power Transactions)

Year
2025

Top N Vendor
20



Revenue Class Hourly Demand

By Year for Revenue Class: All in Month: March

Select filters: Year All Month March

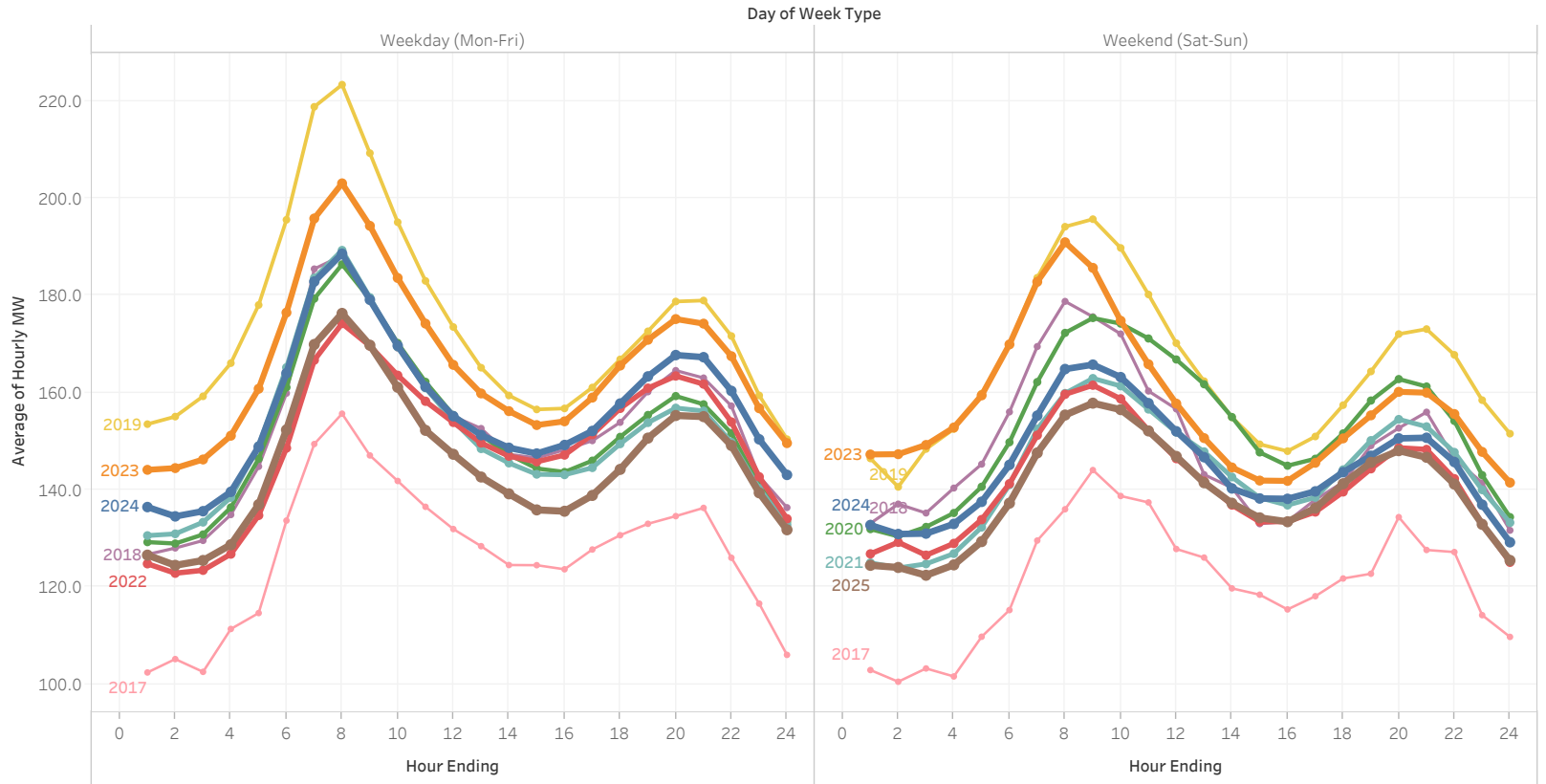
Billed Revenue Class
 In
 Out

- Revenue Class
- Residential
 - Small General
 - Medium General
 - Large General
 - Large Industrial
 - Large Irrigation
 - Small Irrigation

- Year of Date
- 2025
 - 2024
 - 2023
 - 2024
 - 2022
 - 2021
 - 2020
 - 2019
 - 2018
 - 2017

AMI data updated through:

Tue, March 18, 2025



Revenue Class Hourly Demand

By Year for Revenue Class: **Residential** in Month: **March**

Select filters: Year All Month March

Billed Revenue Class

- In
- Out

Revenue Class

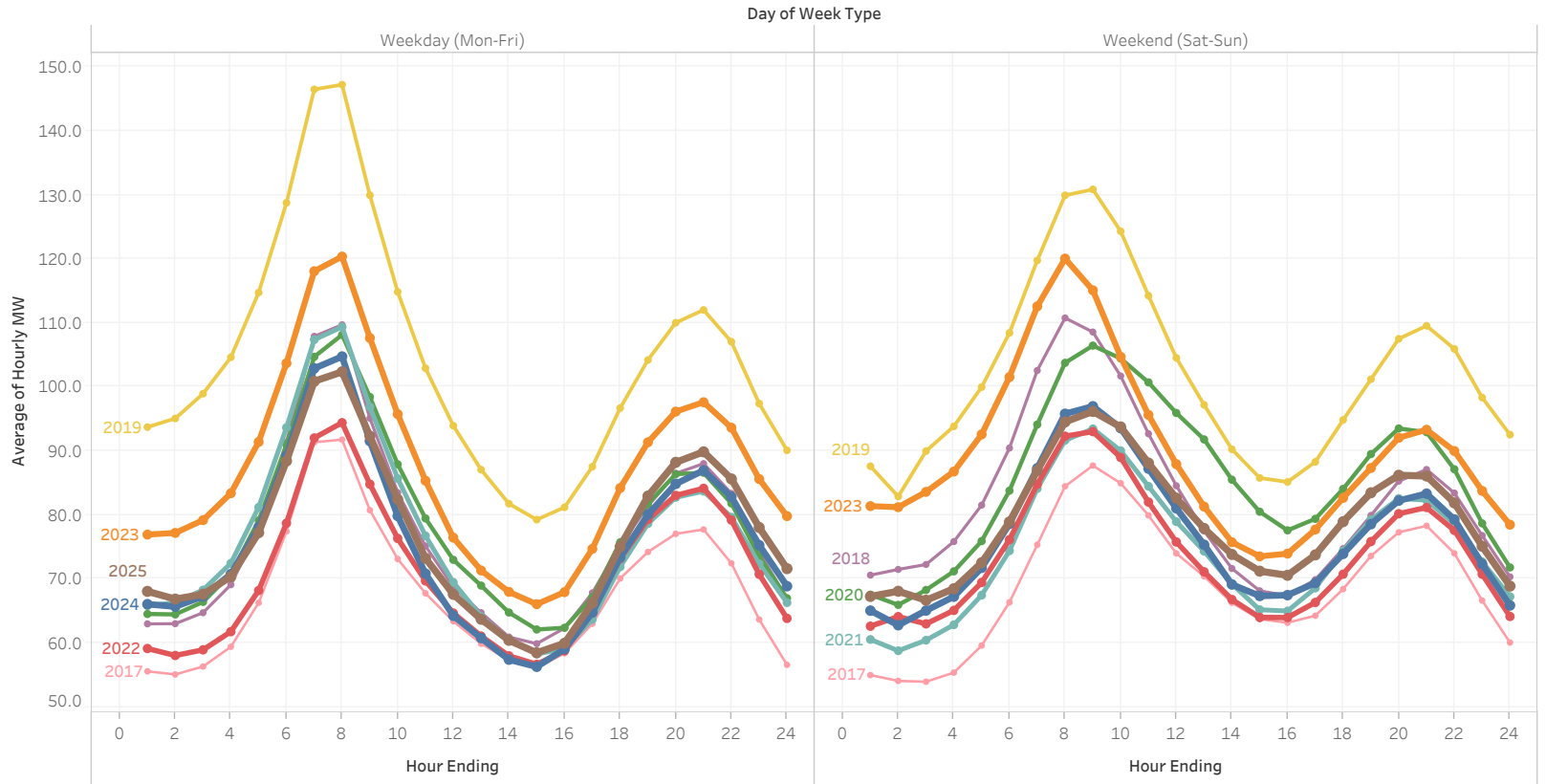
- Residential
- Small General
- Medium General
- Large General
- Large Industrial
- Large Irrigation
- Small Irrigation

Year of Date

- 2025
- 2024
- 2023
- 2022
- 2021
- 2020
- 2019
- 2018
- 2022
- 2017

AMI data updated through:

Tue, March 18, 2025



Revenue Class Hourly Demand

By Year for Revenue Class: **Small General, Medium General, Large General** in Month: **March**

Select filters: Year All Month March

Billed Revenue Class

- In
- Out

Revenue Class

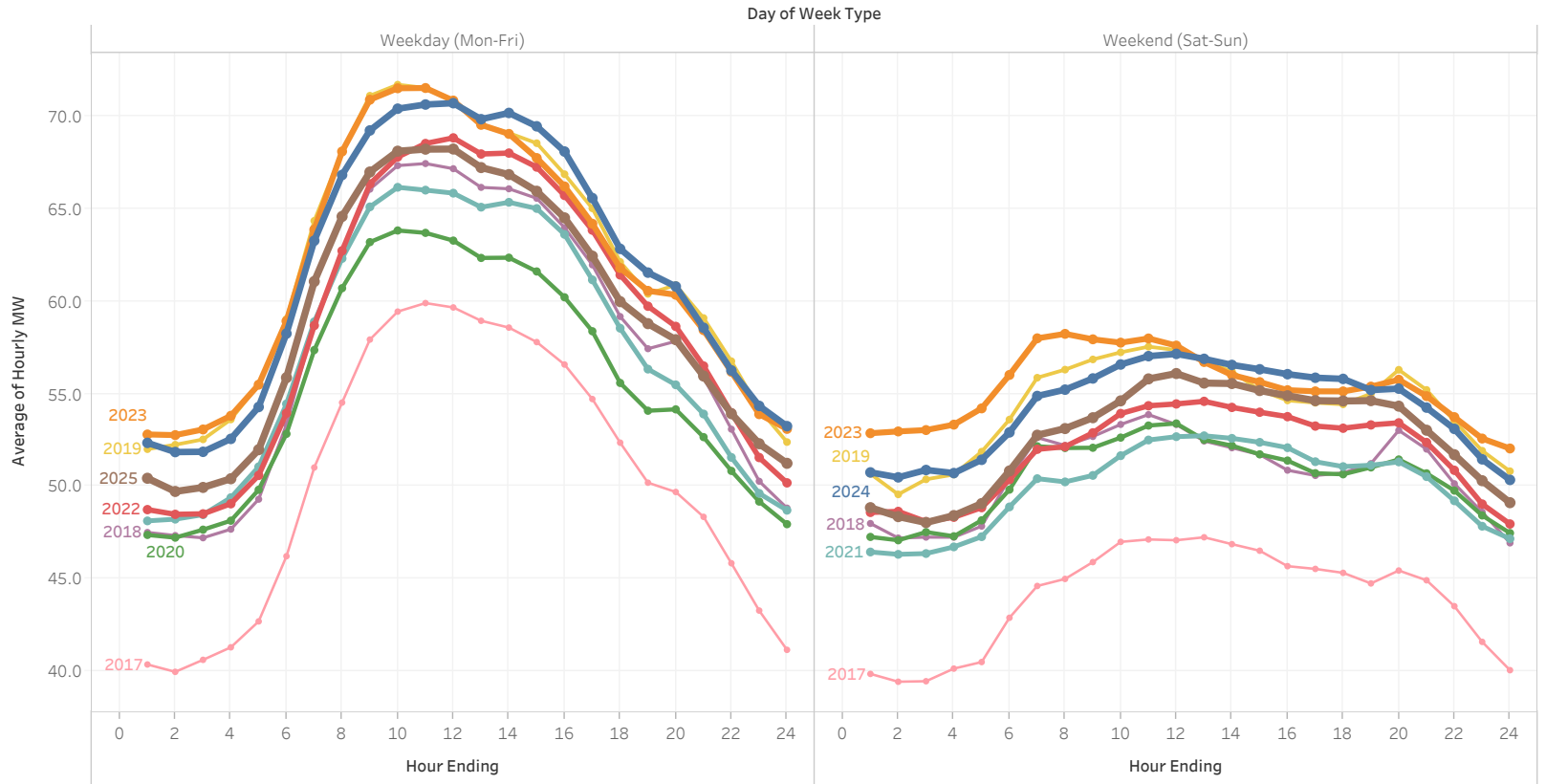
- Residential
- Small General
- Medium General
- Large General
- Large Industrial
- Large Irrigation
- Small Irrigation

Year of Date

- 2025
- 2024
- 2023
- 2022
- 2018
- 2021
- 2020
- 2019
- 2018
- 2017

AMI data updated through:

Tue, March 18, 2025



Revenue Class Cumulative Energy

By Year for Revenue Class: All in Month: March

Select filters:

Year: All
 Month: March
 Month-Day: Multiple values

Billed Revenue Class

- In
- Out

Revenue Class

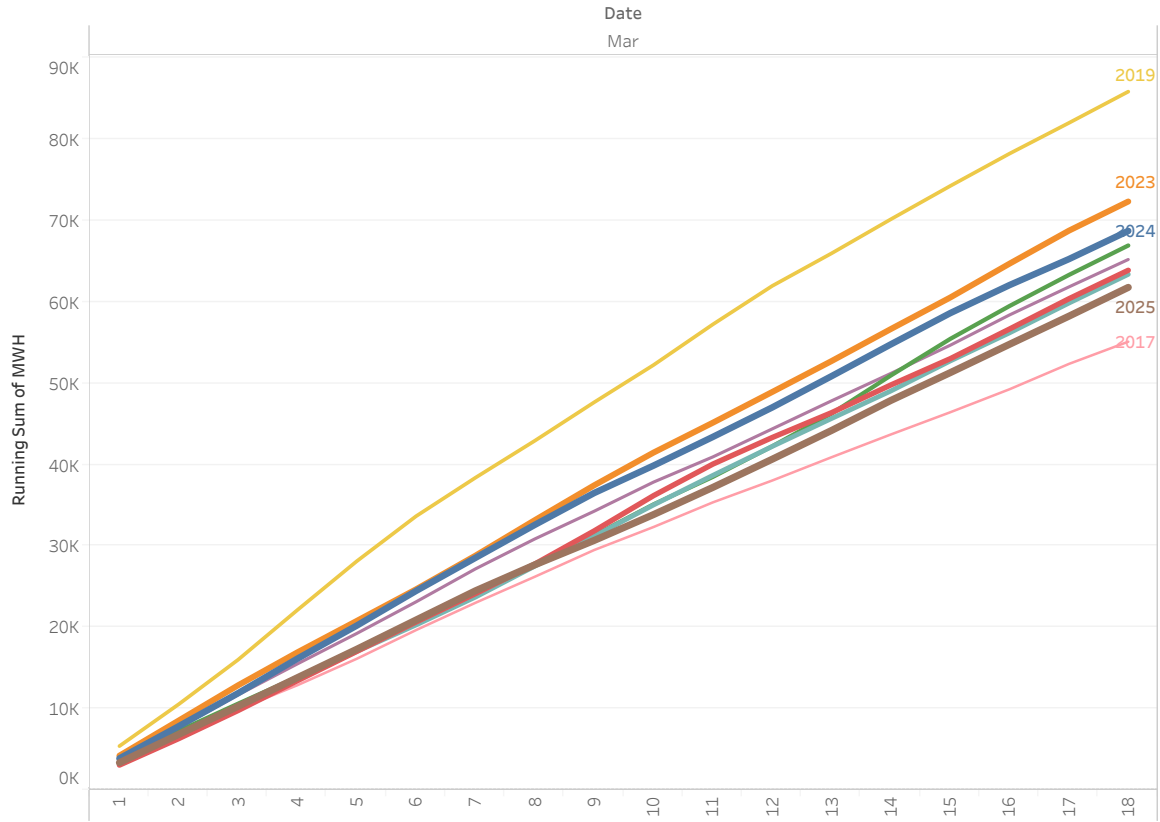
- Residential
- Small General
- Medium General
- Large General
- Large Industrial
- Large Irrigation
- Small Irrigation

Year of Date

- 2025
- 2024
- 2023
- 2022
- 2021
- 2020
- 2019
- 2018
- 2017

AMI data updated through:

Tue, March 18, 2025



Year Over Year Summary:
 (hover to highlight year)

Year of Date	MWH		%
	MWH	Difference	
2017	55,110		
2018	65,218	10,107	18.34%
2019	85,854	20,636	31.64%
2020	66,939	-18,915	-22.03%
2021	63,392	-3,547	-5.30%
2022	63,892	500	0.79%
2023	72,346	8,455	13.23%
2024	68,728	-3,619	-5.00%
2025	61,788	-6,940	-10.10%

Note:
 Totals do not include non-AMI meter readings.

Revenue Class Cumulative Energy

By Year for Revenue Class: **Residential** in Month: **March**

Select filters:

Year: All
 Month: March
 Month-Day: Multiple values

Billed Revenue Class

- In
- Out

Revenue Class

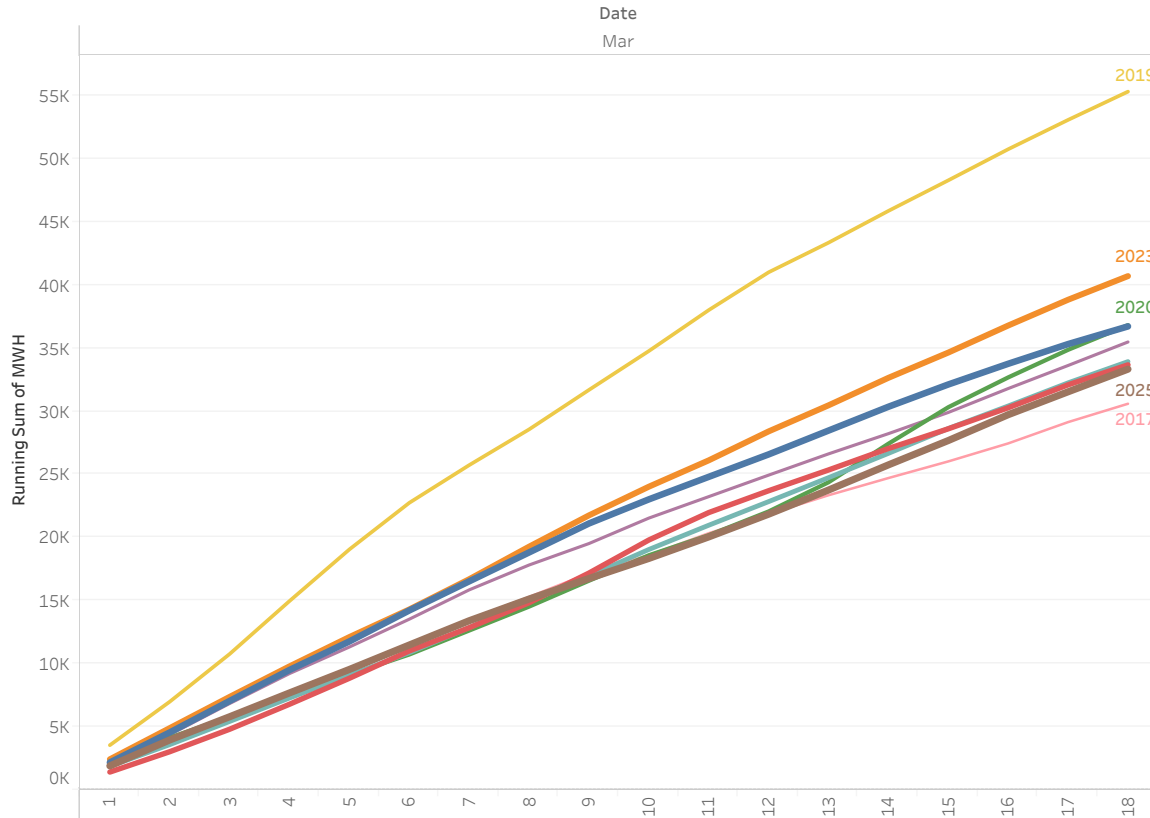
- Residential
- Small General
- Medium General
- Large General
- Large Industrial
- Large Irrigation
- Small Irrigation

Year of Date

- 2025
- 2024
- 2023
- 2022
- 2021
- 2020
- 2019
- 2018
- 2017

AMI data updated through:

Tue, March 18, 2025



Year Over Year Summary:
 (hover to highlight year)

Year of Date	MWH	MWH Difference	% Difference
2017	30,592		
2018	35,484	4,893	15.99%
2019	55,313	19,829	55.88%
2020	36,818	-18,495	-33.44%
2021	33,929	-2,889	-7.85%
2022	33,672	-256	-0.76%
2023	40,702	7,029	20.88%
2024	36,719	-3,983	-9.79%
2025	33,331	-3,387	-9.23%

Note:
 Totals do not include non-AMI meter readings.

Revenue Class Cumulative Energy

By Year for Revenue Class: **Small General, Medium General, Large General** in Month: **March**

Select filters:

Year: All
 Month: March
 Month-Day: Multiple values

Billed Revenue Class

- In
- Out

Revenue Class

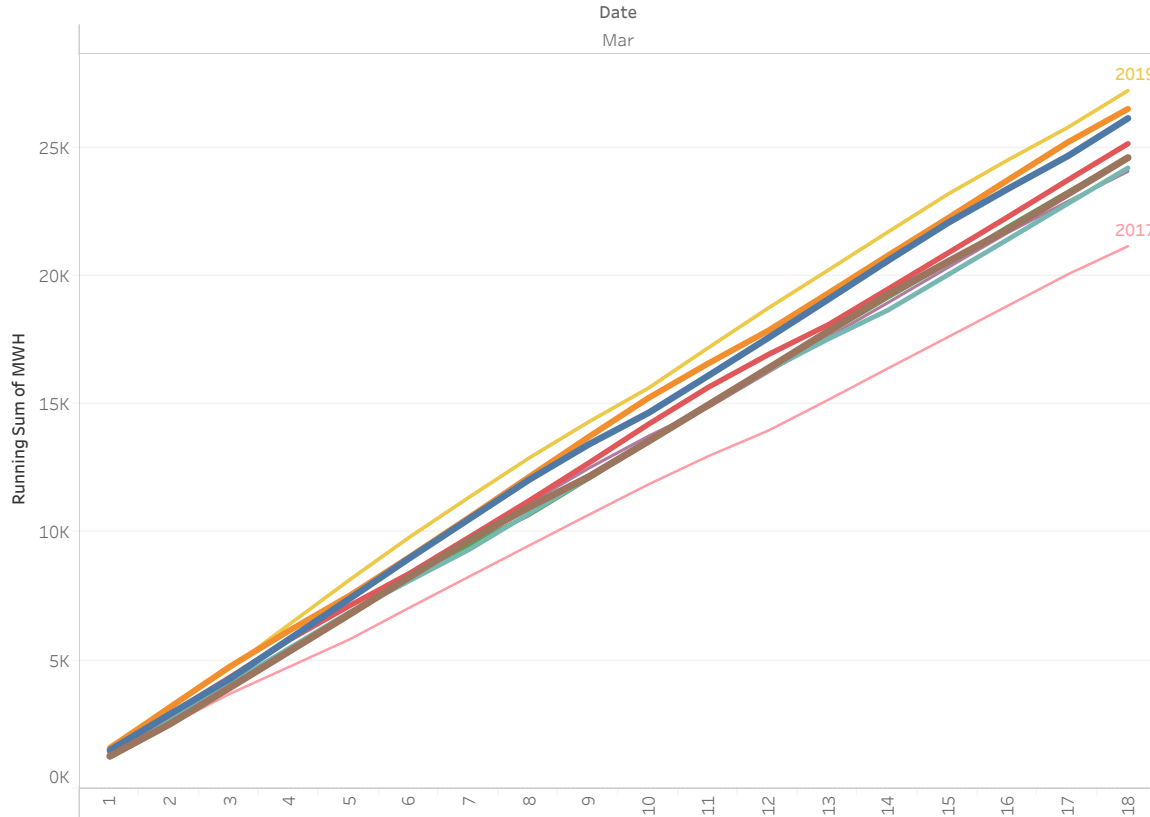
- Residential
- Small General
- Medium General
- Large General
- Large Industrial
- Large Irrigation
- Small Irrigation

Year of Date

- 2025
- 2024
- 2023
- 2022
- 2021
- 2020
- 2019
- 2018
- 2017

AMI data updated through:

Tue, March 18, 2025



Year Over Year Summary:
 (hover to highlight year)

Year of Date	MWH	MWH Difference	% Difference
2017	21,155		
2018	24,072	2,917	13.79%
2019	27,218	3,146	13.07%
2020	24,589	-2,629	-9.66%
2021	24,206	-383	-1.56%
2022	25,149	943	3.90%
2023	26,506	1,357	5.40%
2024	26,138	-368	-1.39%
2025	24,606	-1,533	-5.86%

Note:
 Totals do not include non-AMI meter readings.

Past Due AR in Dollars for Selected Revenue Classes:

All

Balance Aging: [30 Days](#) | [60 Days](#) | [90+ Days](#)

Consumer Class Selection:

Regular

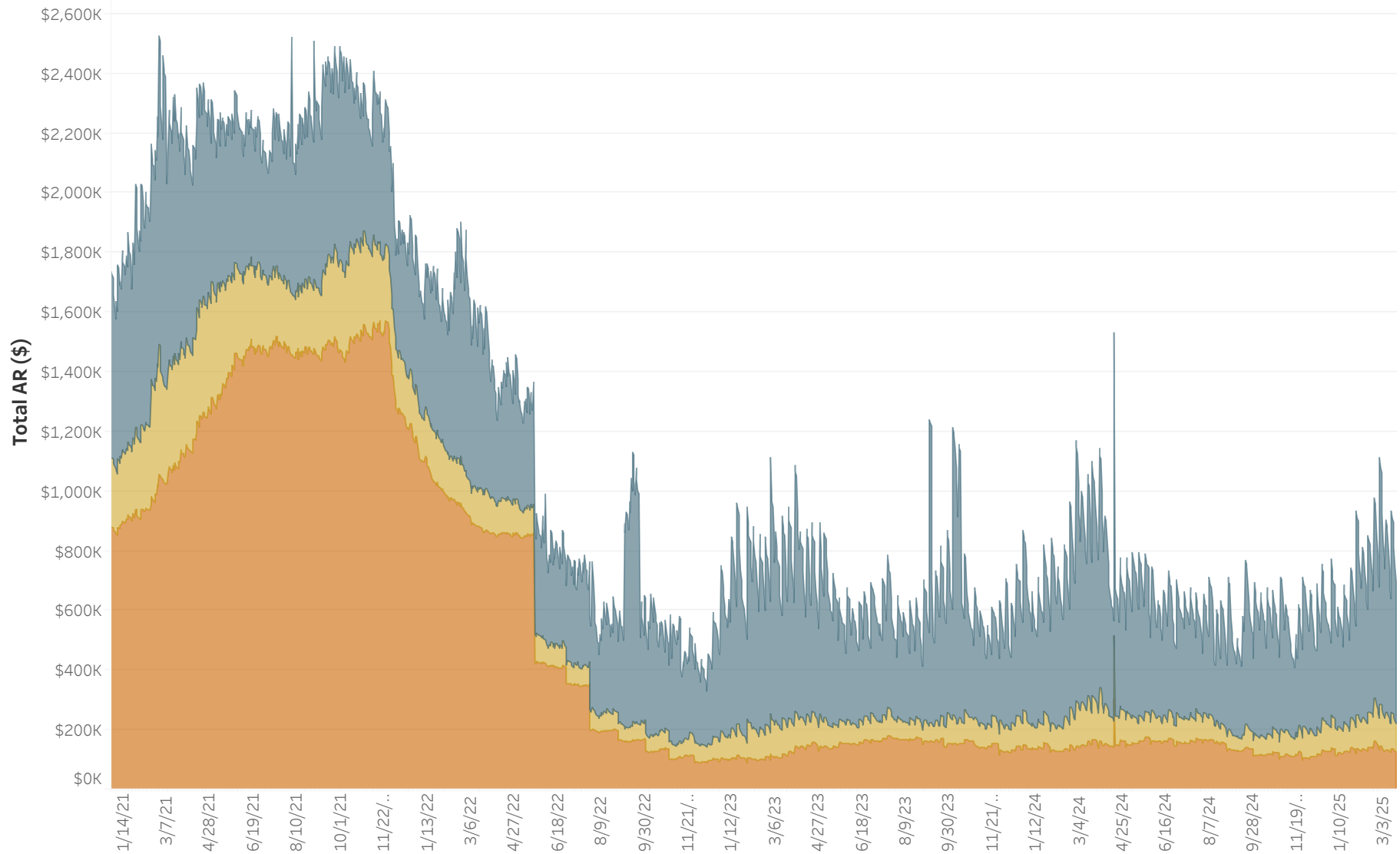
Revenue Class Selection:

All

Service Status:

All

	Accounts	Dollars
30 Days	2,862	\$478,483
60 Days	574	\$91,178
90+ Days	800	\$125,701
Past Due	4,236	\$695,362
Total AR	53,692	\$6,639,096

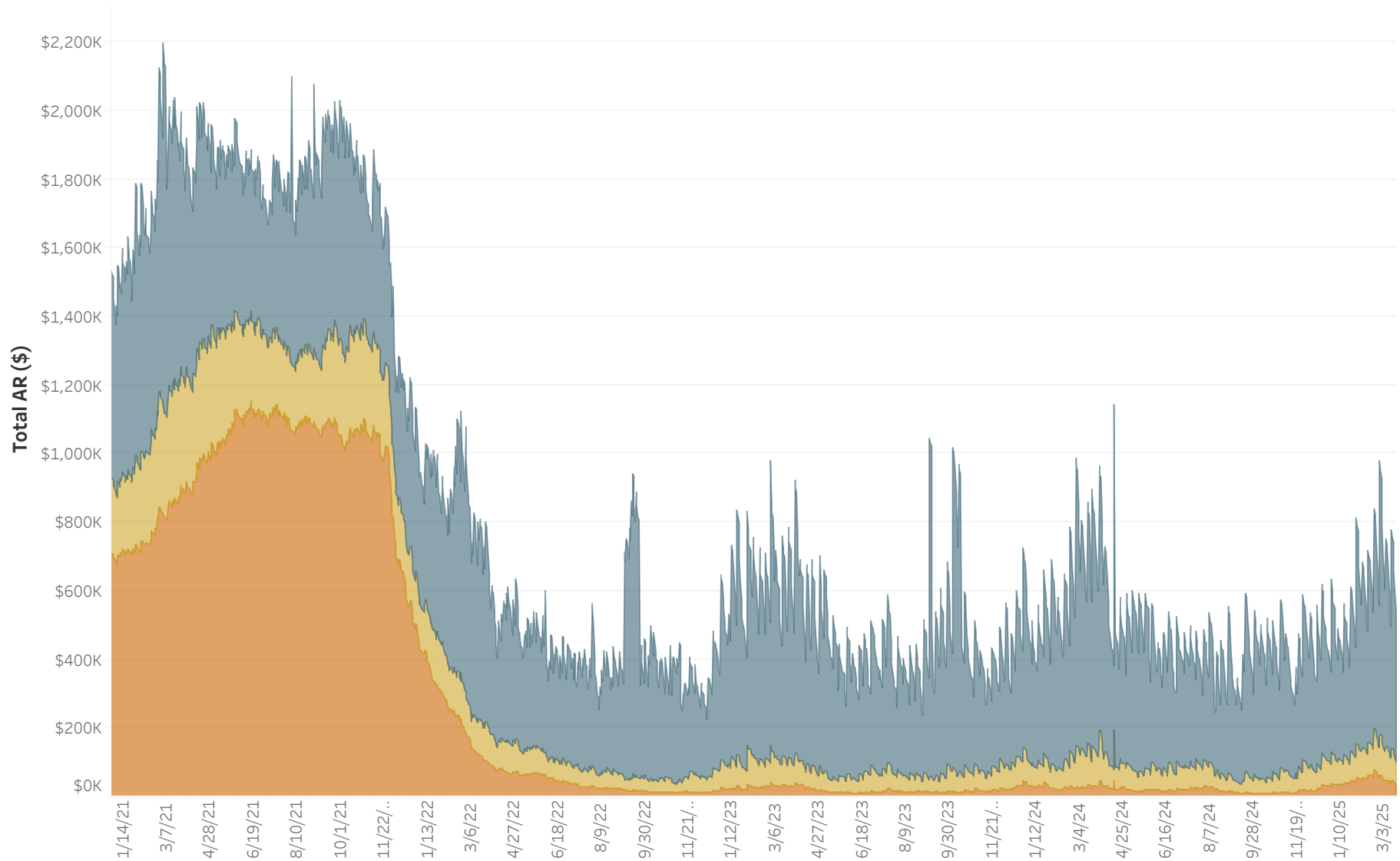


AR data as of 3/19/2025. Data source is AR Balance History Tableau report view.

Past Due AR in Dollars for Selected Revenue Classes:

All
 Balance Aging: **30 Days** | **60 Days** | **90+ Days**

Consumer Class Selection:	Accounts	Dollars
Regular	30 Days	2,720
	60 Days	477
	90+ Days	271
	Past Due	3,468
Revenue Class Selection:		
All		
	Total AR	52,036
Service Status:		
Active		\$6,448,787



AR data as of 3/19/2025. Data source is AR Balance History Tableau report view.

Past Due AR in Dollars for Selected Revenue Classes:

Residential

Balance Aging: 30 Days | 60 Days | 90+ Days

Consumer Class Selection:

Regular

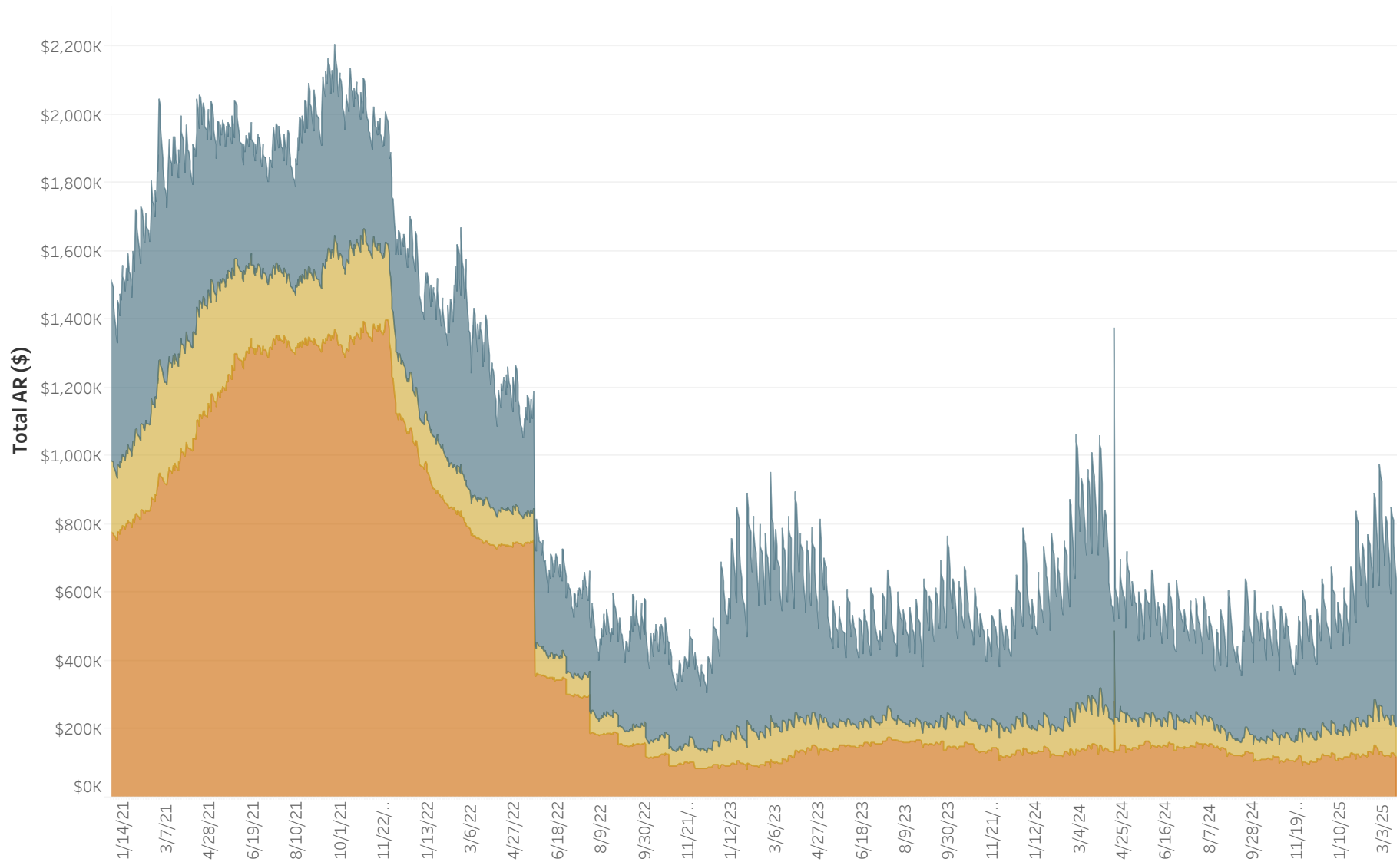
Revenue Class Selection:

Residential

Service Status:

All

	Accounts	Dollars
30 Days	2,545	\$435,711
60 Days	523	\$87,121
90+ Days	750	\$117,985
Past Due	3,818	\$640,817
Total AR	44,546	\$4,382,051



AR data as of 3/19/2025. Data source is AR Balance History Tableau report view.

Past Due AR in Dollars for Selected Revenue Classes:

Residential

Balance Aging: 30 Days | 60 Days | 90+ Days

Consumer Class Selection:

Regular

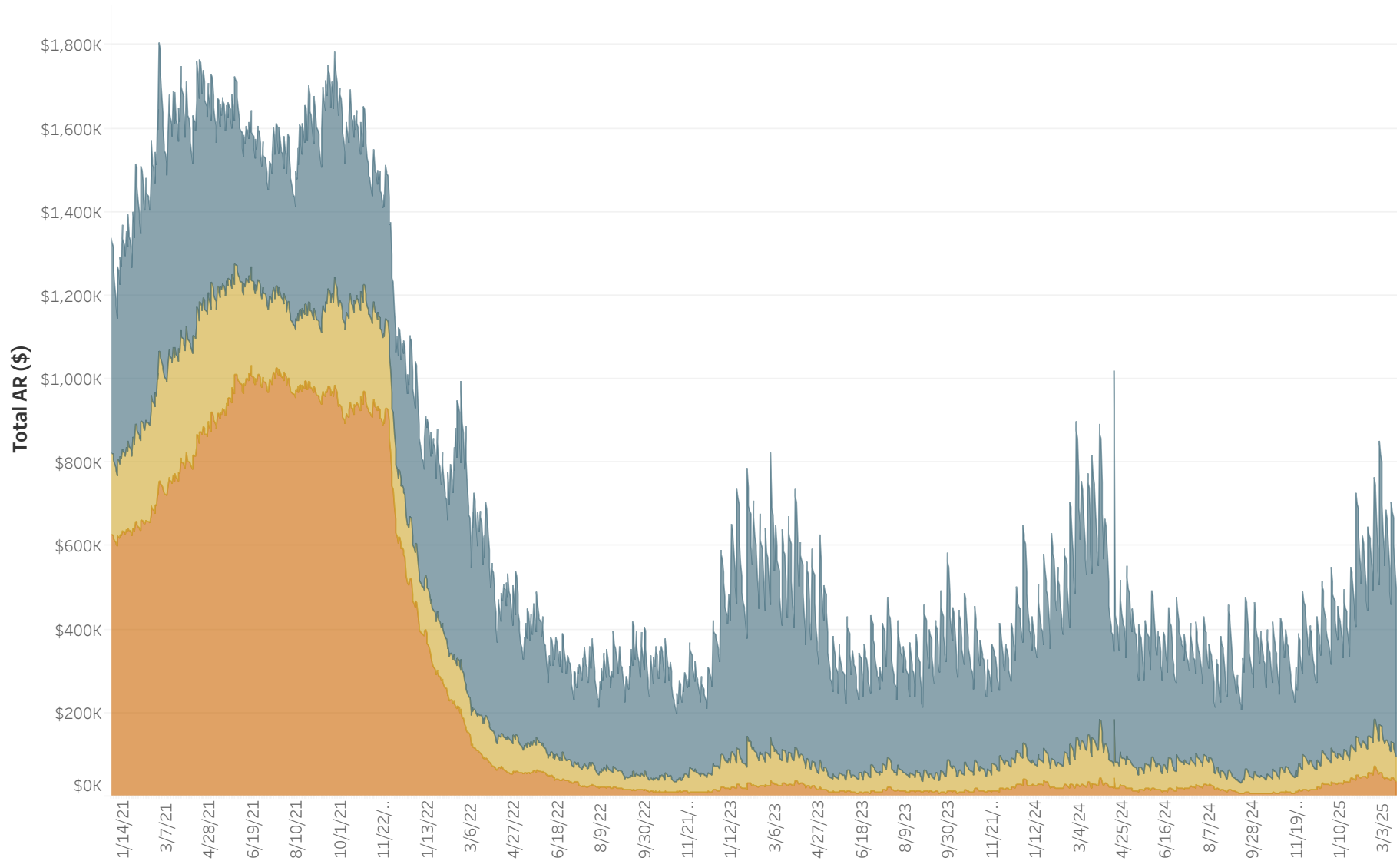
Revenue Class Selection:

Residential

Service Status:

Active

	Accounts	Dollars
30 Days	2,415	\$402,757
60 Days	431	\$61,441
90+ Days	240	\$33,437
Past Due	3,086	\$497,635
Total AR	42,983	\$4,203,666



AR data as of 3/19/2025. Data source is AR Balance History Tableau report view.

Past Due AR in Dollars for Selected Revenue Classes:

Residential

Balance Aging: 30 Days | 60 Days | 90+ Days

Consumer Class Selection:

Regular

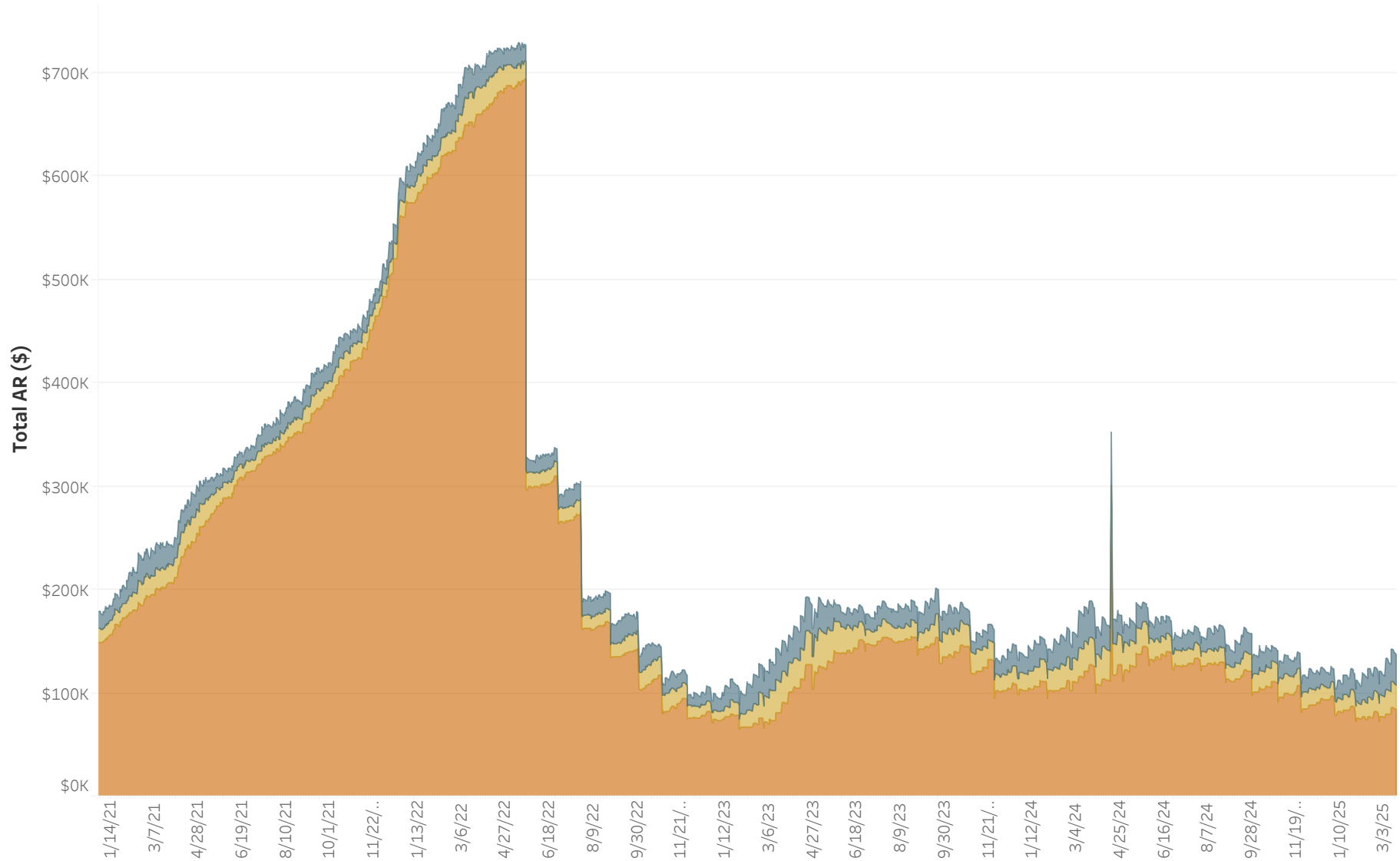
Revenue Class Selection:

Residential

Service Status:

Inactive

	Accounts	Dollars
30 Days	114	\$29,064
60 Days	85	\$23,737
90+ Days	501	\$83,691
Past Due	700	\$136,492
Total AR	1,283	\$158,091



AR data as of 3/19/2025. Data source is AR Balance History Tableau report view.