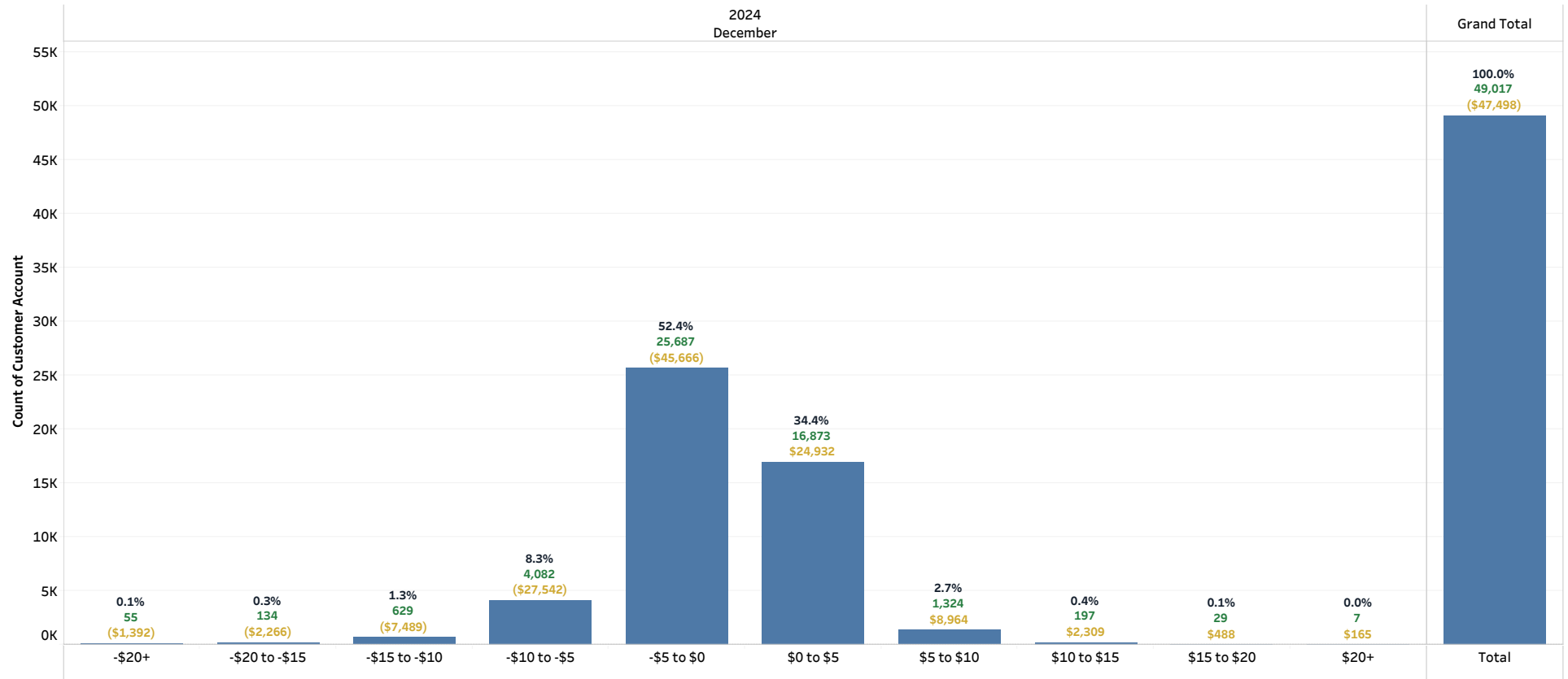


# Residential Demand Billing Impact Analysis by Customer Account (Includes Discounts) Billing Date: All

(Note: The analysis shown is aggregated to the customer account and a customer can have multiple accounts.)

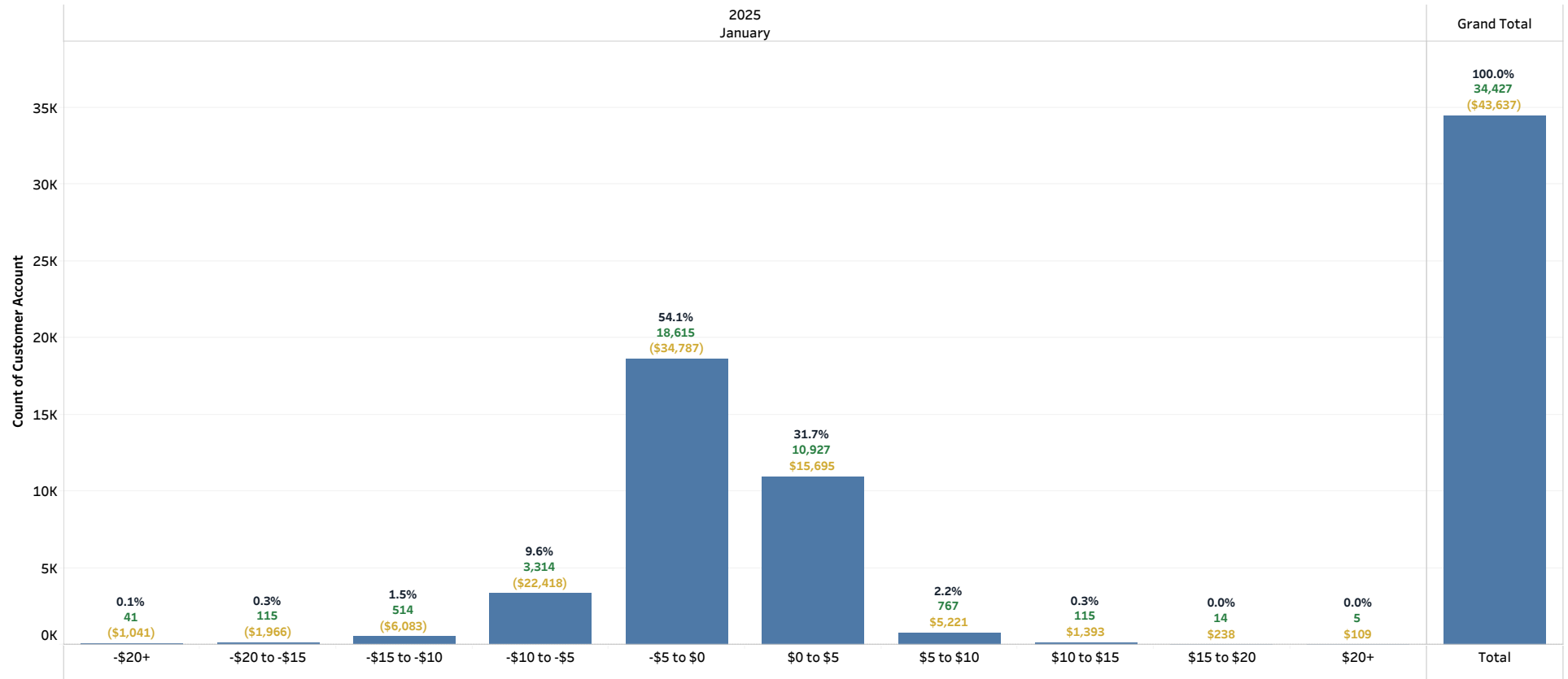
(% of Total Accounts | # of Accounts | Total Net Impact)



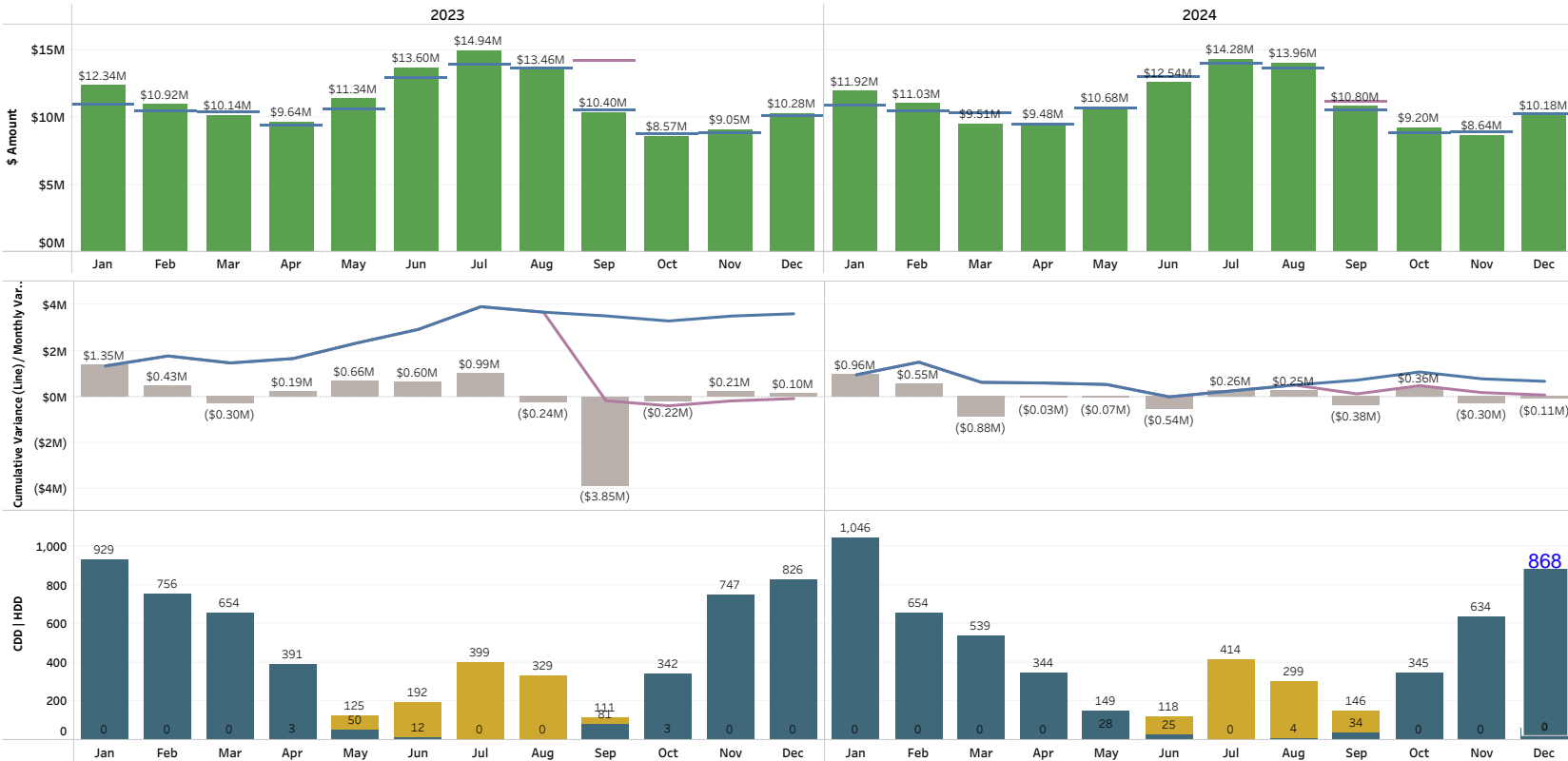
# Residential Demand Billing Impact Analysis by Customer Account (Includes Discounts) Billing Date: All

(Note: The analysis shown is aggregated to the customer account and a customer can have multiple accounts.)

(% of Total Accounts | # of Accounts | Total Net Impact)



Cumulative Retail Revenue Budget vs Actuals (Original and Amended Budget): All



Rate Class  
All

Filter Date Year  
Multiple values

Filter Date Month  
All

Legend  
 Budget  
 Amended Budget  
 Actual  
 Cumulative Variance Original  
 Cumulative Variance Amended  
 Month Over / (Under)  
 Heating Degree Days  
 Cooling Degree Days

Note: Cumulative budget amendment changes are reflected in the month of September.

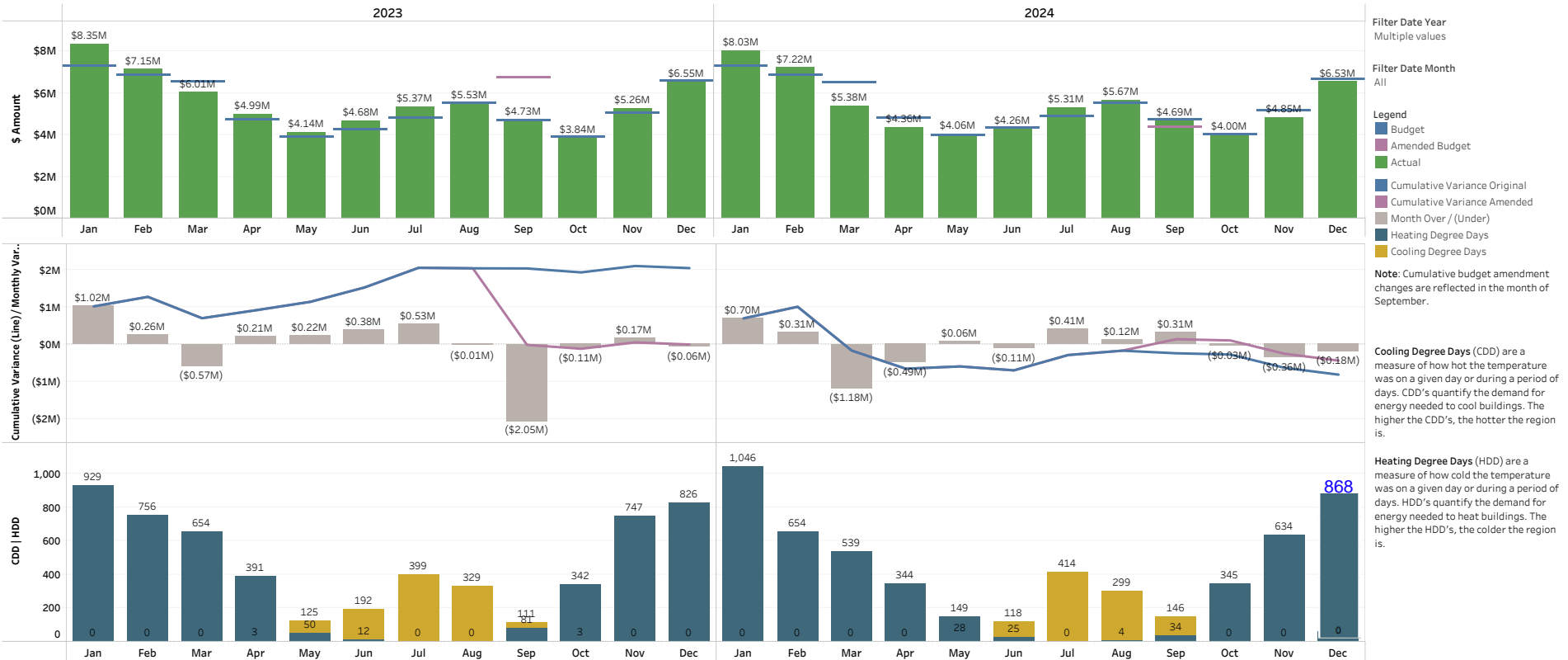
Cooling Degree Days (CDD) are a measure of how hot the temperature was on a given day or during a period of days. CDD's quantify the demand for energy needed to cool buildings. The higher the CDD's, the hotter the region is.

Heating Degree Days (HDD) are a measure of how cold the temperature was on a given day or during a period of days. HDD's quantify the demand for energy needed to heat buildings. The higher the HDD's, the colder the region is.

December 2024 daily weather is missing from the National Oceanic and Atmospheric Administration (NOAA) data.

# Preliminary Data (Subject to Change)

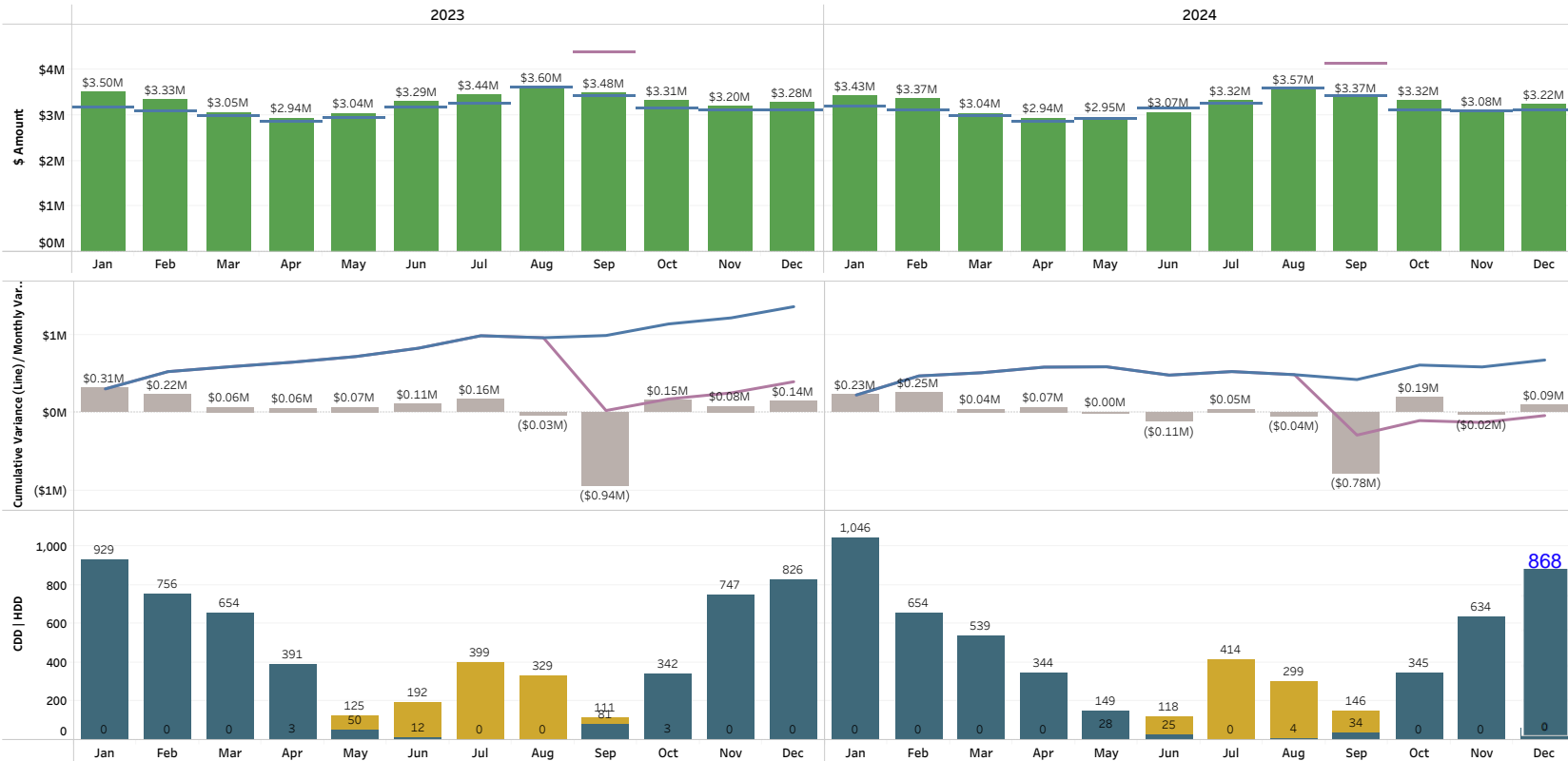
Cumulative Retail Revenue Budget vs Actuals (Original and Amended Budget): Residential Sales



December 2024 daily weather is missing from the National Oceanic and Atmospheric Administration (NOAA) data.

# Preliminary Data (Subject to Change)

Cumulative Retail Revenue Budget vs Actuals (Original and Amended Budget): Large General Service Sales, Medium General Service Sales, Small General Service Sales



Rate Class  
Multiple values

Filter Date Year  
Multiple values

Filter Date Month  
All

Legend  
 Budget  
 Amended Budget  
 Actual  
 Cumulative Variance Original  
 Cumulative Variance Amended  
 Month Over / (Under)  
 Heating Degree Days  
 Cooling Degree Days

Note: Cumulative budget amendment changes are reflected in the month of September.

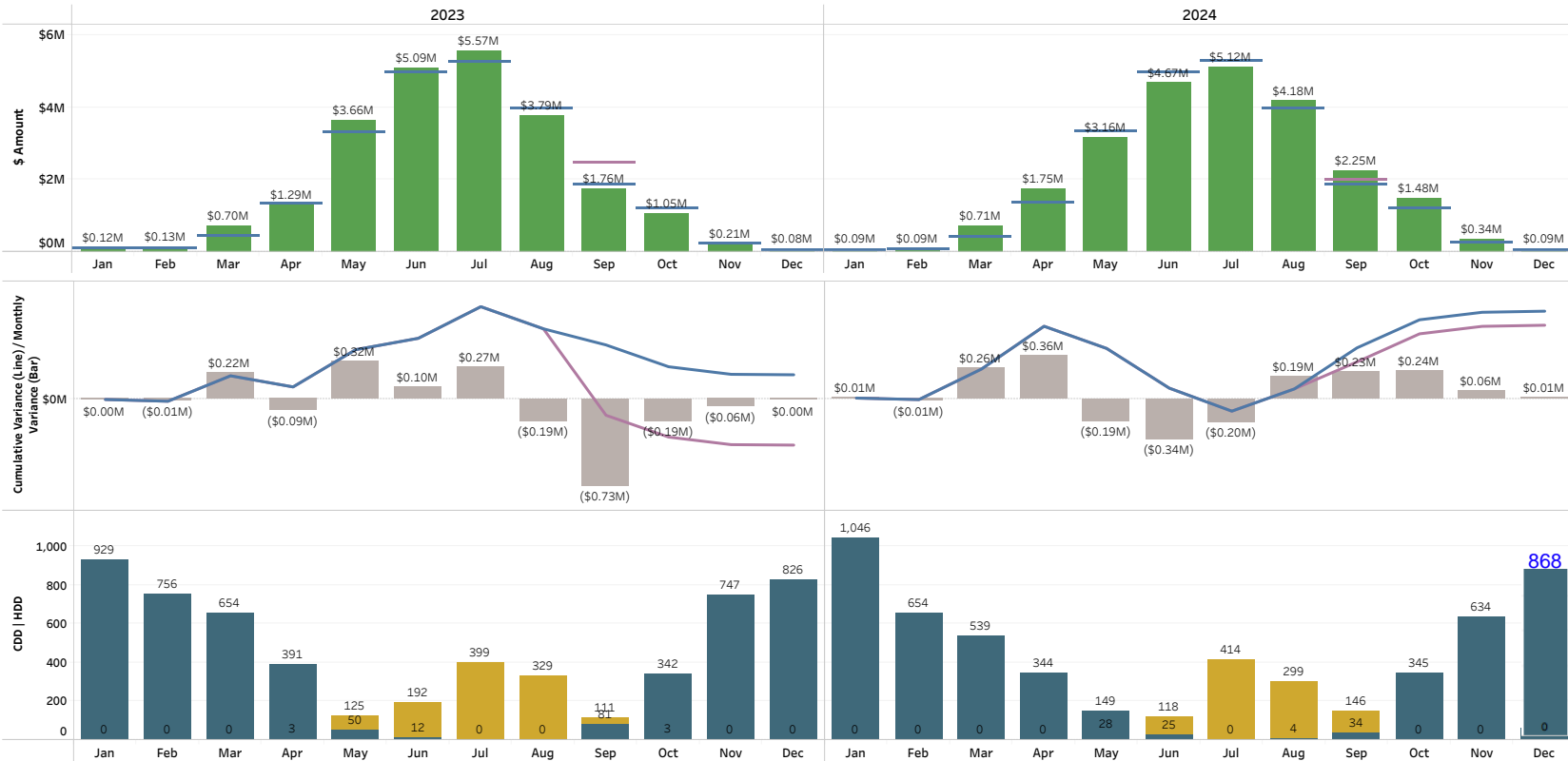
Cooling Degree Days (CDD) are a measure of how hot the temperature was on a given day or during a period of days. CDD's quantify the demand for energy needed to cool buildings. The higher the CDD's, the hotter the region is.

Heating Degree Days (HDD) are a measure of how cold the temperature was on a given day or during a period of days. HDD's quantify the demand for energy needed to heat buildings. The higher the HDD's, the colder the region is.

December 2024 daily weather is missing from the National Oceanic and Atmospheric Administration (NOAA) data.

# Preliminary Data (Subject to Change)

Cumulative Retail Revenue Budget vs Actuals (Original and Amended Budget): Large Irrigation Sales



**Rate Class**  
Large Irrigation Sales

**Filter Date Year**  
Multiple values

**Filter Date Month**  
All

**Legend**  
 Budget  
 Amended Budget  
 Actual  
 Cumulative Variance Original  
 Cumulative Variance Amended  
 Month Over / (Under)  
 Heating Degree Days  
 Cooling Degree Days

**Note:** Cumulative budget amendment changes are reflected in the month of September.

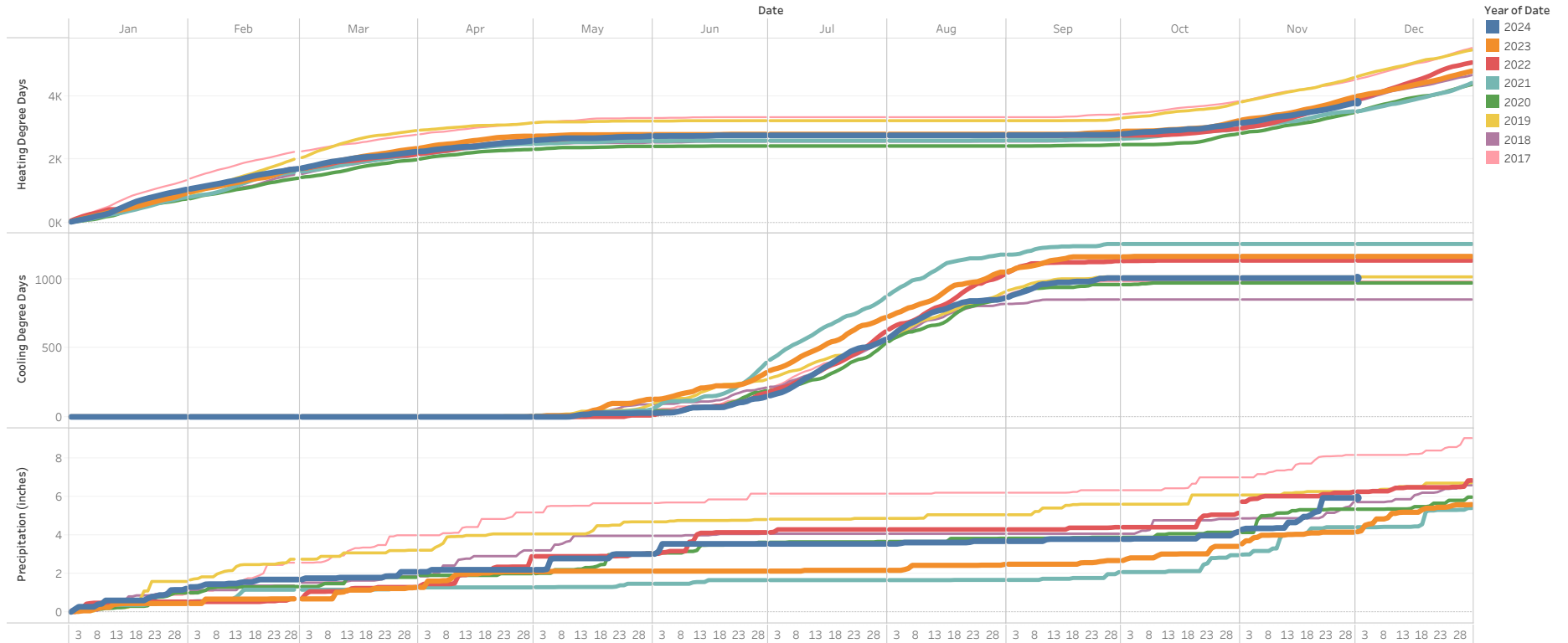
**Cooling Degree Days (CDD)** are a measure of how hot the temperature was on a given day or during a period of days. CDD's quantify the demand for energy needed to cool buildings. The higher the CDD's, the hotter the region is.

**Heating Degree Days (HDD)** are a measure of how cold the temperature was on a given day or during a period of days. HDD's quantify the demand for energy needed to heat buildings. The higher the HDD's, the colder the region is.

December 2024 daily weather is missing from the National Oceanic and Atmospheric Administration (NOAA) data.

# Preliminary Data (Subject to Change)

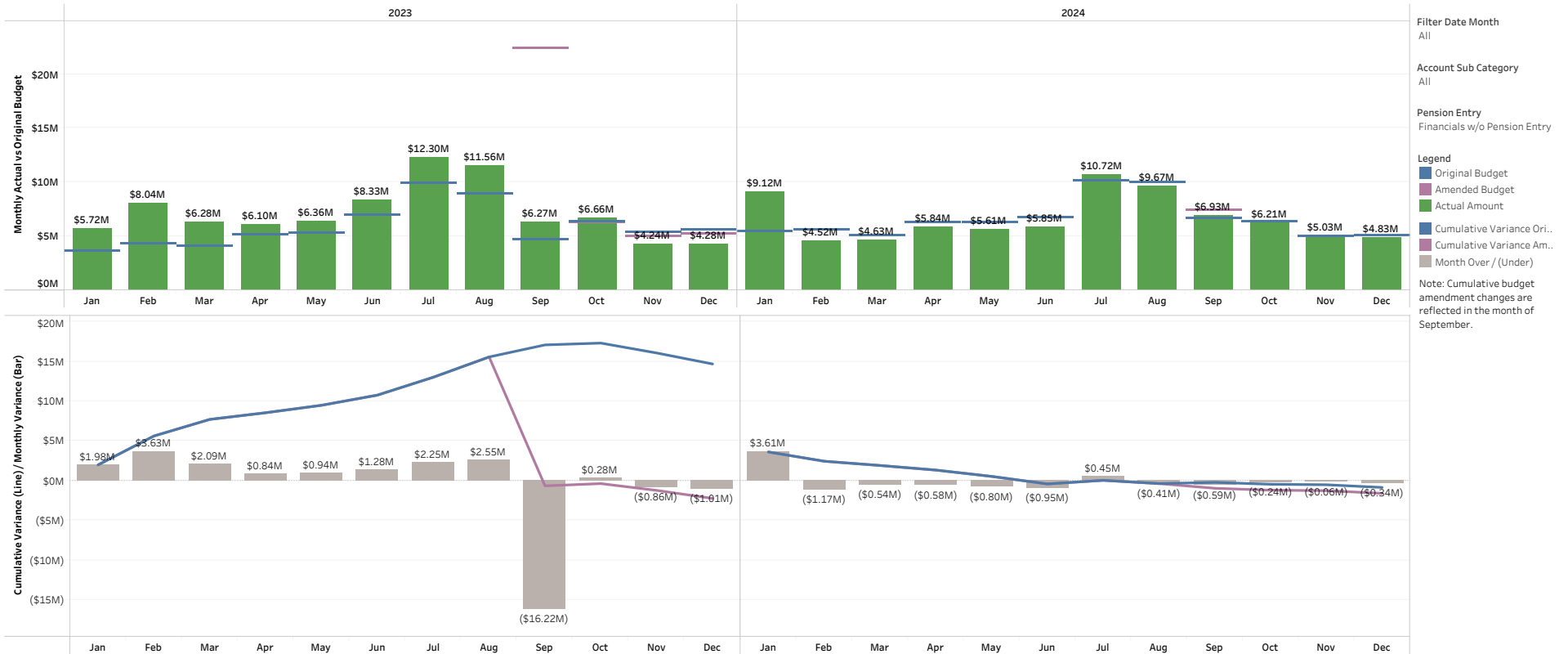
# Cumulative Daily Weather by Year



Daily weather at Tri-Cities Airport (USW00024163), sourced from NOAA website, <https://www.ncdc.noaa.gov/cdo-web/search?datasetid=GHCND>

December 2024 daily weather is missing from the National Oceanic and Atmospheric Administration (NOAA) data.

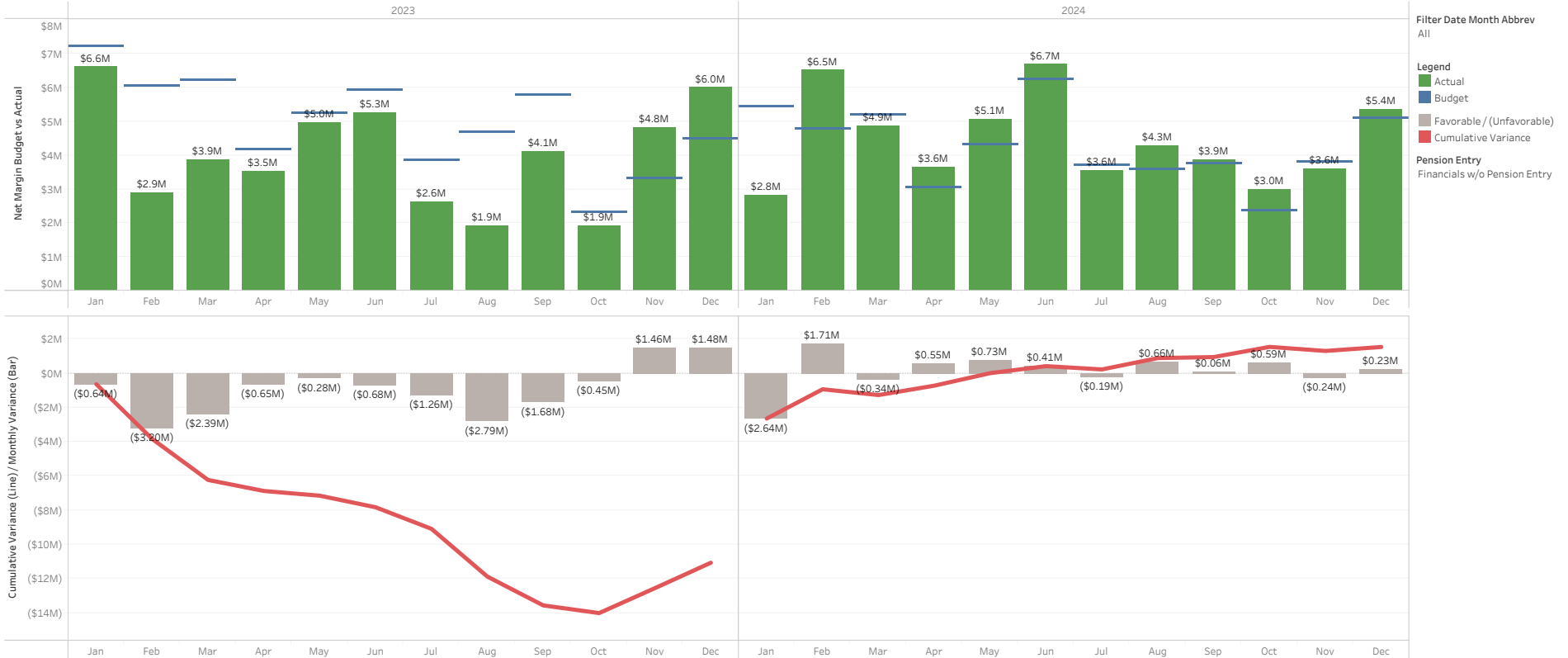
Cumulative Net Power Cost Budget vs Actuals (Original and Amended Budget): All



Preliminary Data (Subject to Change)

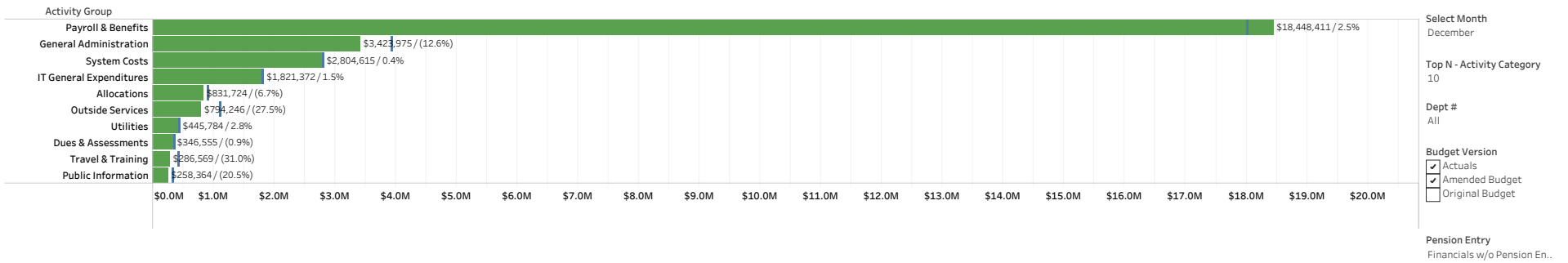


### Cumulative Net Margin Original Budget vs Actuals

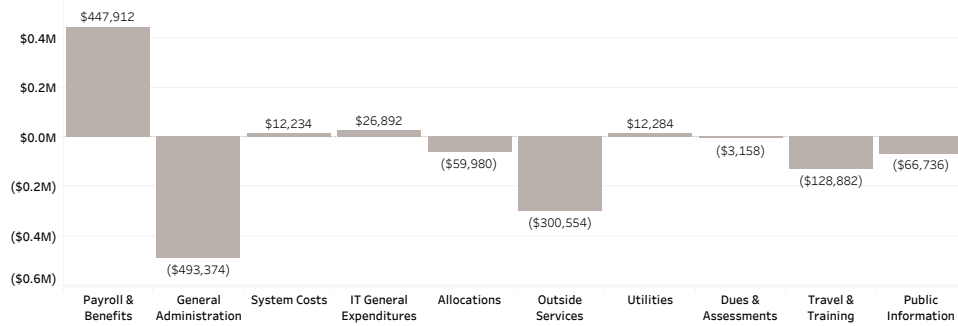


Preliminary Data (Subject to Change)

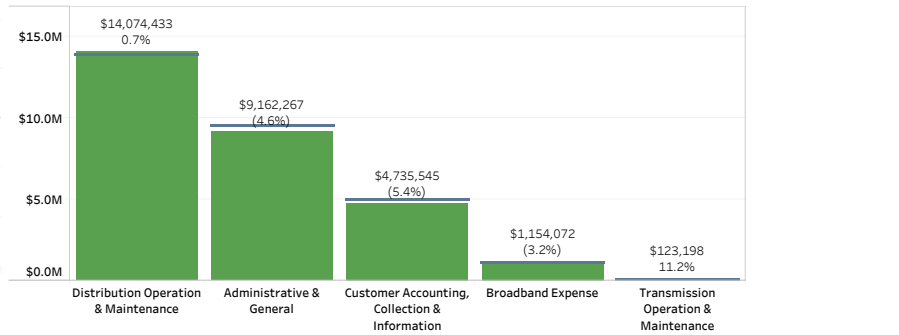
2024 Top 10 YTD O&M Actuals & Amended Budget by Activity Group Through December



2024 Top 10, YTD O&M Budget Variance by Activity Group Through December

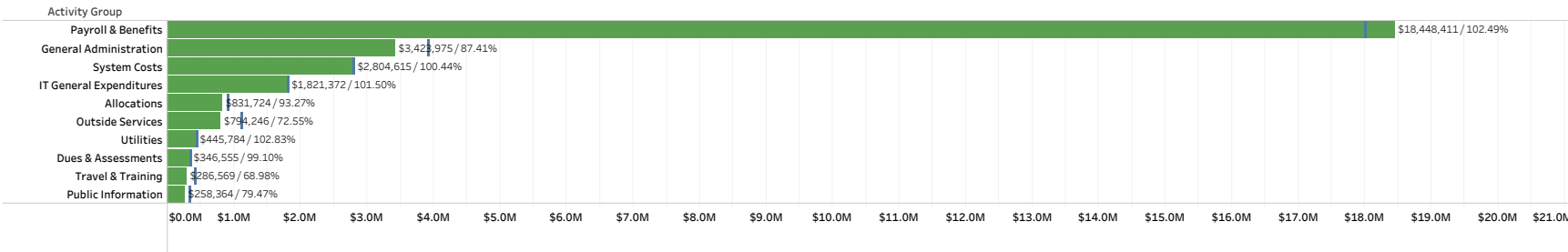


2024 YTD O&M Actuals & Amended Budget by Financial Statement Group Through December



Preliminary Data (Subject to Change)

2024 Top 10 YTD O&M Actuals & Amended Budget by Activity Group Through December  
 % of Year: 100.00%



Enter Year  
2024

Select Month  
December

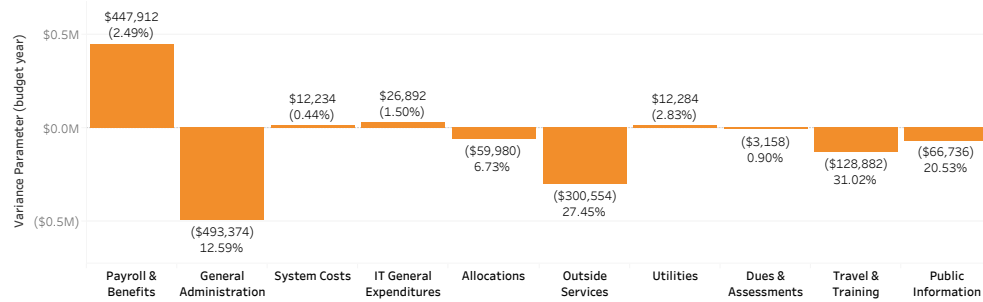
Top N - Activity Category  
10

Dept #  
All

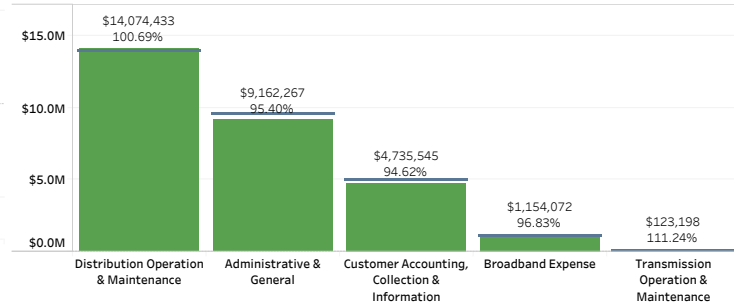
Budget Version  
 Actuals  
 Amended Budget  
 Original Budget

Pension Entry  
Financials w/o Pension Ent..

2024 Top 10, Remaining Budget Amount by Activity Group through December  
 % of Year Remaining: 0.00%



2024 YTD O&M Actuals & Amended Budget by Financial Statement Group  
 Through December  
 % of Year: 100.00%



Legend  
 Budget  
 YTD Actuals  
 Remaining Budget

Preliminary Data (Subject to Change)

Capital Drill Down with [2024 Actuals & Amended Budget](#)

% of Year: 100.0%

Category	Group	Actual Amount	Budget Amount	% of Budget
Transmission	Transmission Projects	\$9,046,641	\$7,912,335	114.34%
Distribution	Capacity & Reliability	\$6,509,911	\$5,967,595	109.09%
	Customer Growth	\$7,991,290	\$9,899,551	80.72%
	General Plant	\$906,153	\$930,600	97.37%
	Other	\$121,567	\$172,333	70.54%
	Repair & Replace	\$4,302,330	\$4,163,377	103.34%
Broadband	Broadband	\$1,001,584	\$1,399,017	71.59%
General Plant	General Plant	\$735,766	\$800,925	91.86%
Information Technology	Information Technology	\$704,035	\$901,187	78.12%
Other	Other	\$7,949	\$296,902	2.68%
Security	Security	\$1,646,948	\$2,211,416	74.47%
<b>Grand Total</b>		<b>\$32,974,174</b>	<b>\$34,655,238</b>	<b>95.15%</b>

Select Year  
2024

Select Month(s)

- Jan
- Feb
- Mar
- Apr
- May
- Jun
- Jul
- Aug
- Sep
- Oct
- Nov
- Dec
- Budget

Budget Version

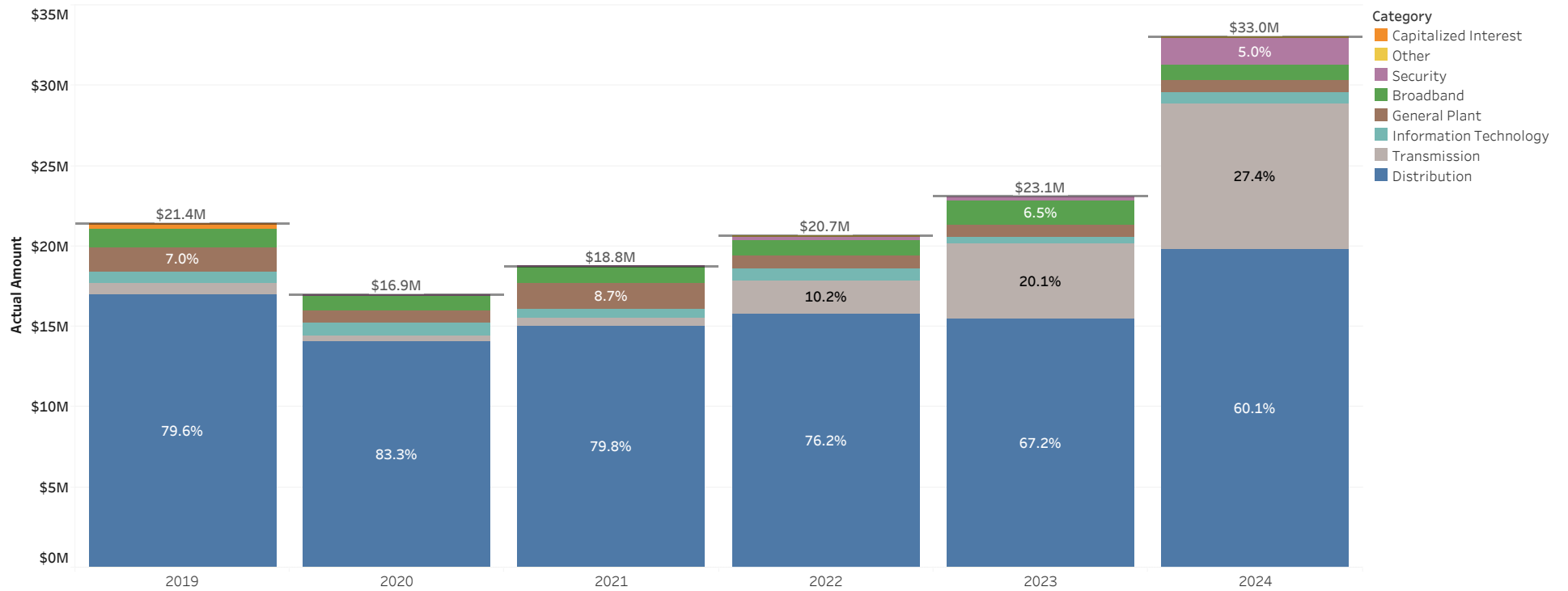
- Actuals
- Amended Budget
- Original Budget

Pension Entry

Financials w/o Pension Entry

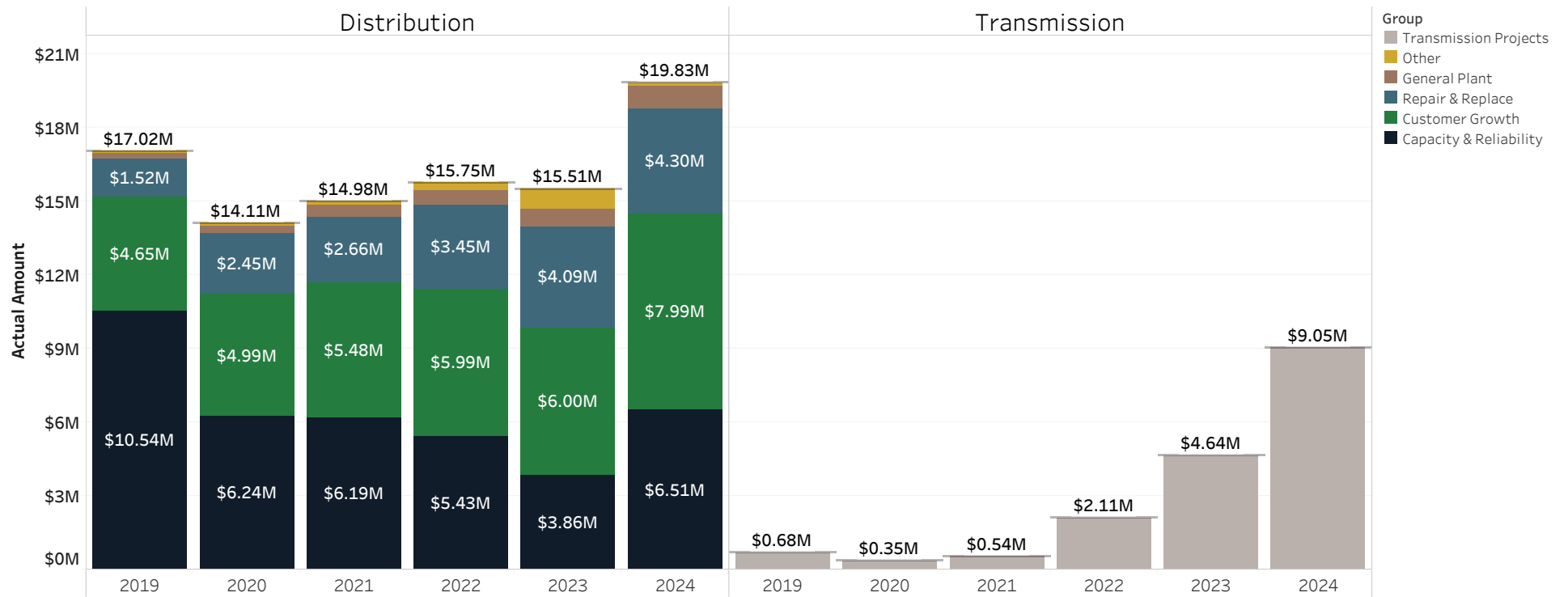
Preliminary Data (Subject to Change)

## Gross Capital Expenditures by Category (Actuals)



Preliminary Data (Subject to Change)

## Gross Capital Expenditures by Group (Actuals)

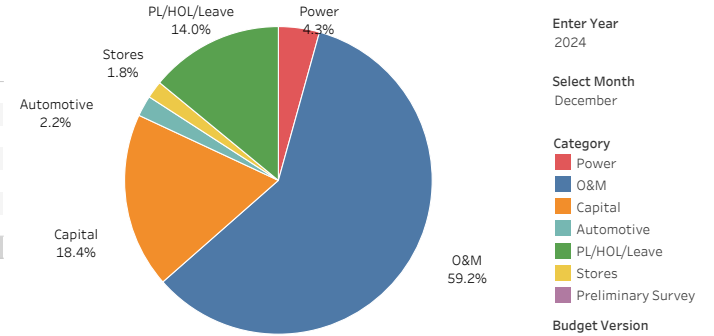


Preliminary Data (Subject to Change)

YTD December 2024 Labor by Category: (Activity 11)  
Actuals & Amended Budget

Category	Current Year Actuals	Current Year Budget	Over / (Under)	Current Year % Variance	Prior Year Actual	Prior Year Variance	Prior Year % Variance
Power	\$698,315	\$744,921	(\$46,606)	(6.3%)	\$738,211	(\$39,896)	(5.4%)
O&M	\$10,167,024	\$10,250,764	(\$83,740)	(0.8%)	\$9,402,282	\$764,742	8.1%
Capital	\$3,415,175	\$3,187,473	\$227,703	7.1%	\$2,827,515	\$587,660	20.8%
Automotive	\$338,737	\$378,708	(\$39,971)	(10.6%)	\$335,198	\$3,538	1.1%
PL/HOL/Leave	\$2,514,783	\$2,430,830	\$83,953	3.5%	\$2,282,765	\$232,019	10.2%
Stores	\$314,084	\$315,372	(\$1,288)	(0.4%)	\$299,861	\$14,223	4.7%
Preliminary Survey	(\$8,279)		(\$8,279)		\$433	(\$8,712)	(2010.1%)
<b>Grand Total</b>	<b>\$17,441,573</b>	<b>\$17,308,068</b>	<b>\$133,505</b>	<b>0.8%</b>	<b>\$15,886,266</b>	<b>\$1,555,307</b>	<b>9.8%</b>

YTD December 2024 Budget: (Activity 11)



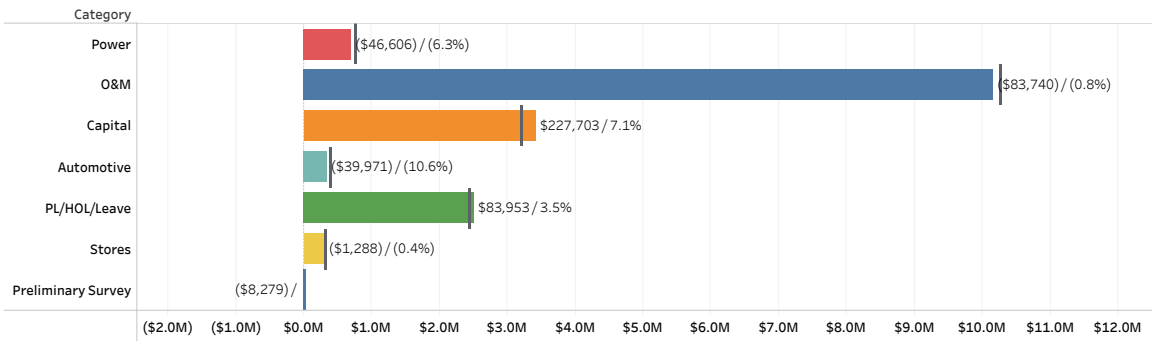
Activity 11  
Enter Year 2024  
Select Month December

Category  
 Power  
 O&M  
 Capital  
 Automotive  
 PL/HOL/Leave  
 Stores  
 Preliminary Survey

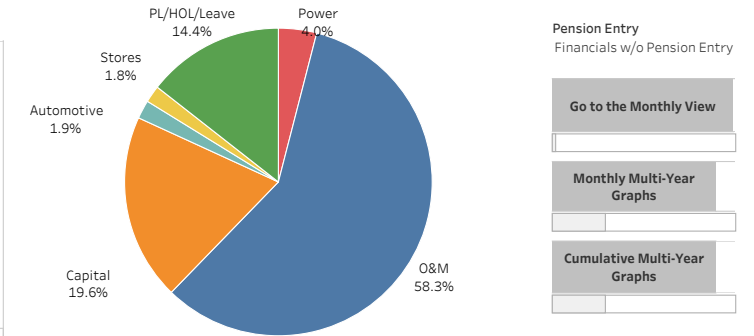
Budget Version  
 Actuals  
 Amended Budget  
 Original Budget

YTD December 2024 Labor by Category: (Activity 11)

(Amount displayed is actuals minus budget / % variance from budget)



YTD December 2024 Actuals: (Activity 11)



Pension Entry  
Financials w/o Pension Entry

Go to the Monthly View  
  
 Monthly Multi-Year Graphs  
  
 Cumulative Multi-Year Graphs

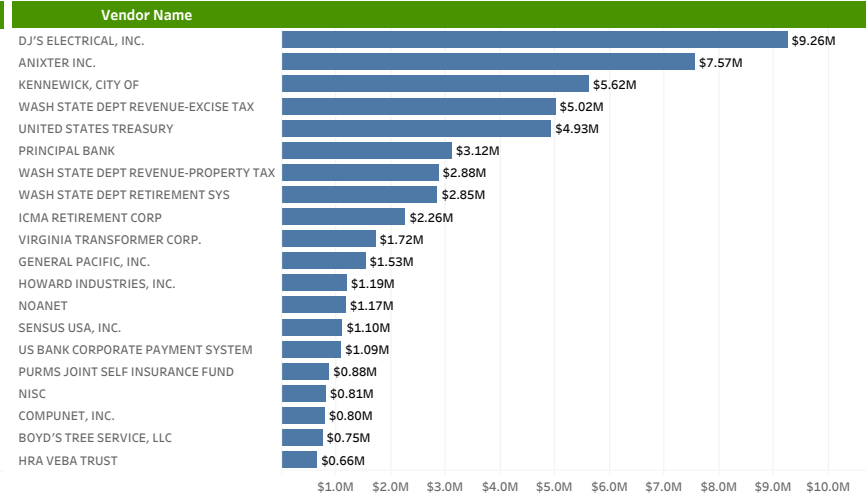
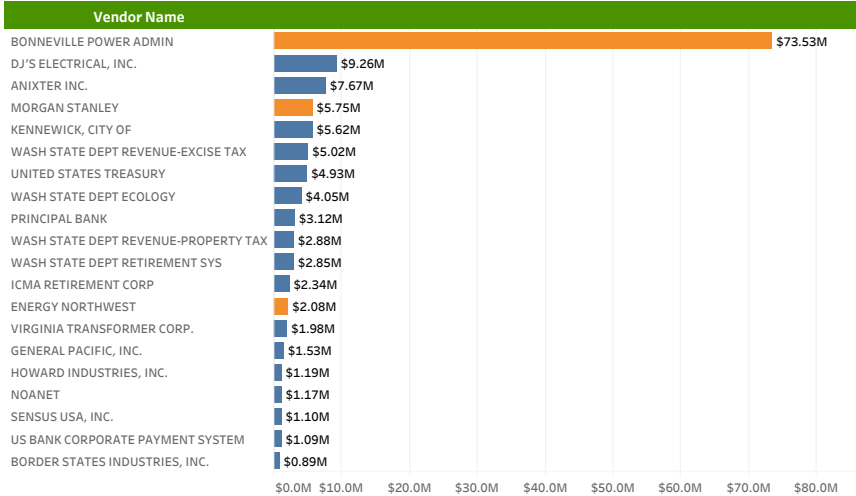
Preliminary Data (Subject to Change)

District Top 20 Vendors - 2024 YTD  
(Including Power Transactions)

District Top 20 Vendors - 2024 YTD  
(Excluding Power Transactions)

Year  
2024

Top N Vendor  
20



Preliminary Data (Subject to Change)



# Revenue Class Cumulative Energy

## By Year for Revenue Class: All in Month: All

Select filters: Year Multiple values Month All Month-Day All

### Billed Revenue Class

- In
- Out

### Revenue Class

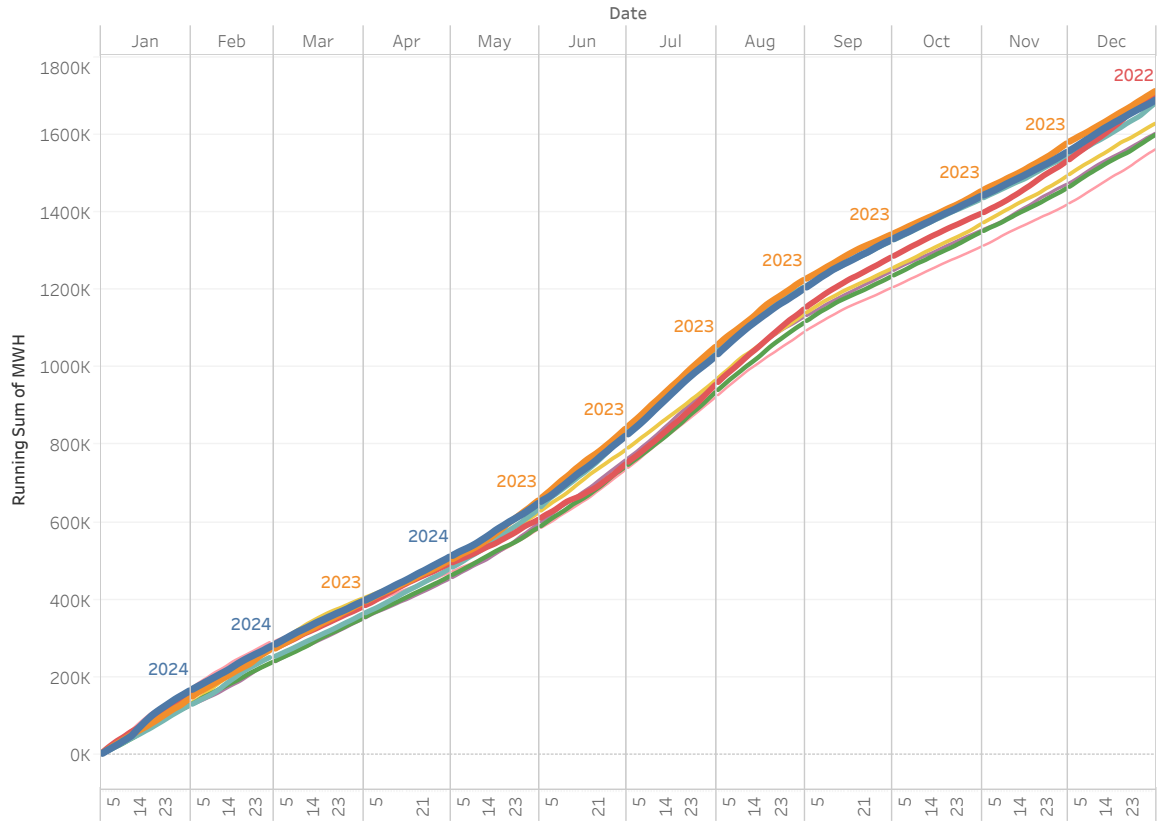
- Residential
- Small General
- Medium General
- Large General
- Large Industrial
- Large Irrigation
- Small Irrigation

### Year of Date

- 2024
- 2023
- 2022
- 2021
- 2020
- 2019
- 2018
- 2017

AMI data updated through:

Tue, January 21, 2025



Year Over Year Summary:  
(hover to highlight year)

Year of Date	MWH	MWH Difference	% Difference
2017	1,561,723		
2018	1,603,218	41,496	2.66%
2019	1,628,403	25,185	1.57%
2020	1,598,925	-29,478	-1.81%
2021	1,681,093	82,168	5.14%
2022	1,704,522	23,429	1.39%
2023	1,711,834	7,312	0.43%
2024	1,688,756	-23,078	-1.35%

Note:  
Totals do not include non-AMI meter readings.

# Revenue Class Hourly Demand

## By Year for Revenue Class: All in Month: January

Select filters: Year All Month January

### Billed Revenue Class

- In
- Out

### Revenue Class

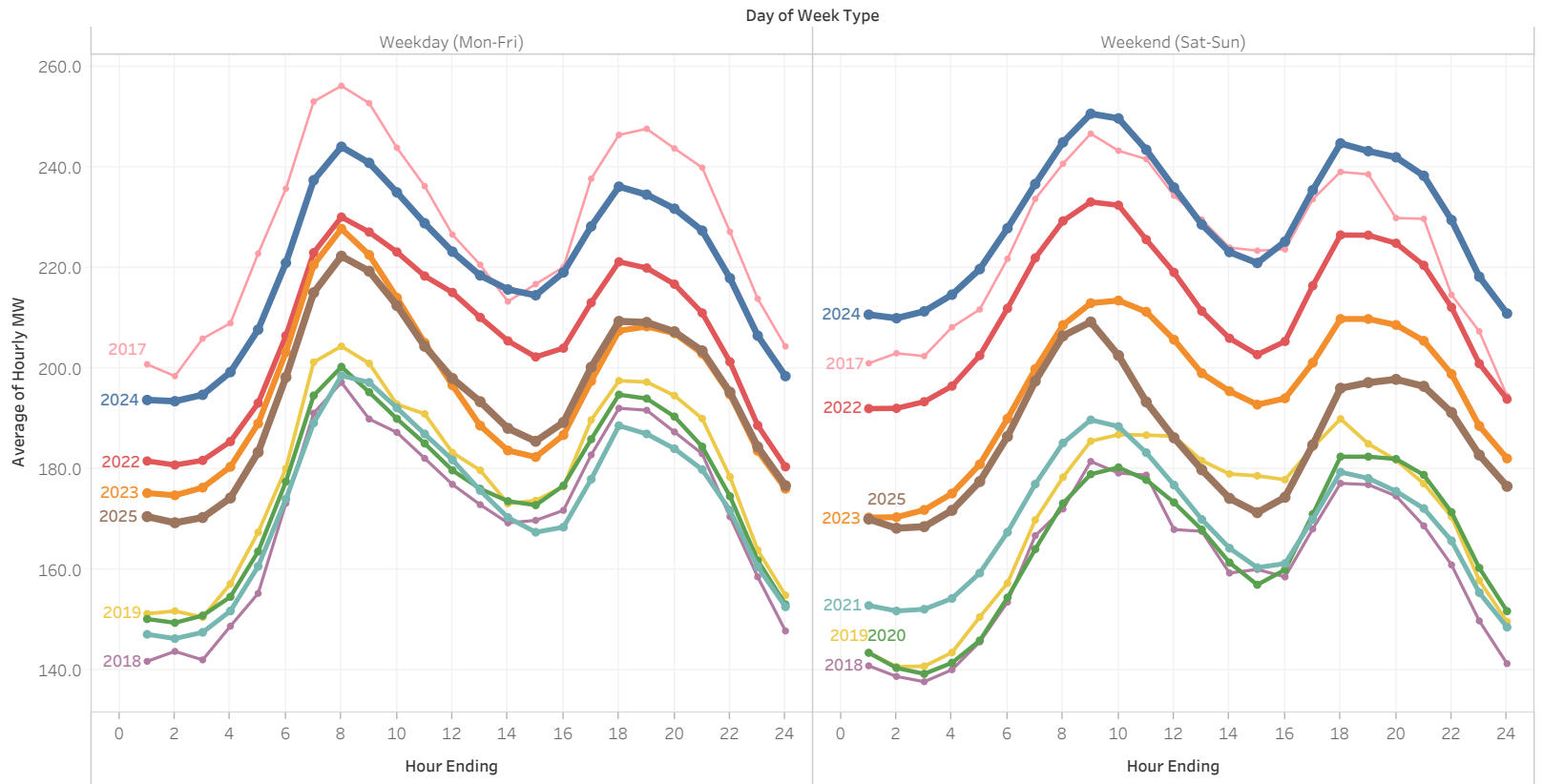
- Residential
- Small General
- Medium General
- Large General
- Large Industrial
- Large Irrigation
- Small Irrigation

### Year of Date

- 2025
- 2024
- 2023
- 2022
- 2025
- 2021
- 2020
- 2019
- 2018
- 2017

AMI data updated through:

Tue, January 21, 2025



# Revenue Class Hourly Demand

By Year for Revenue Class: **Residential** in Month: **January**

Select filters: Year All Month January

## Billed Revenue Class

- In
- Out

## Revenue Class

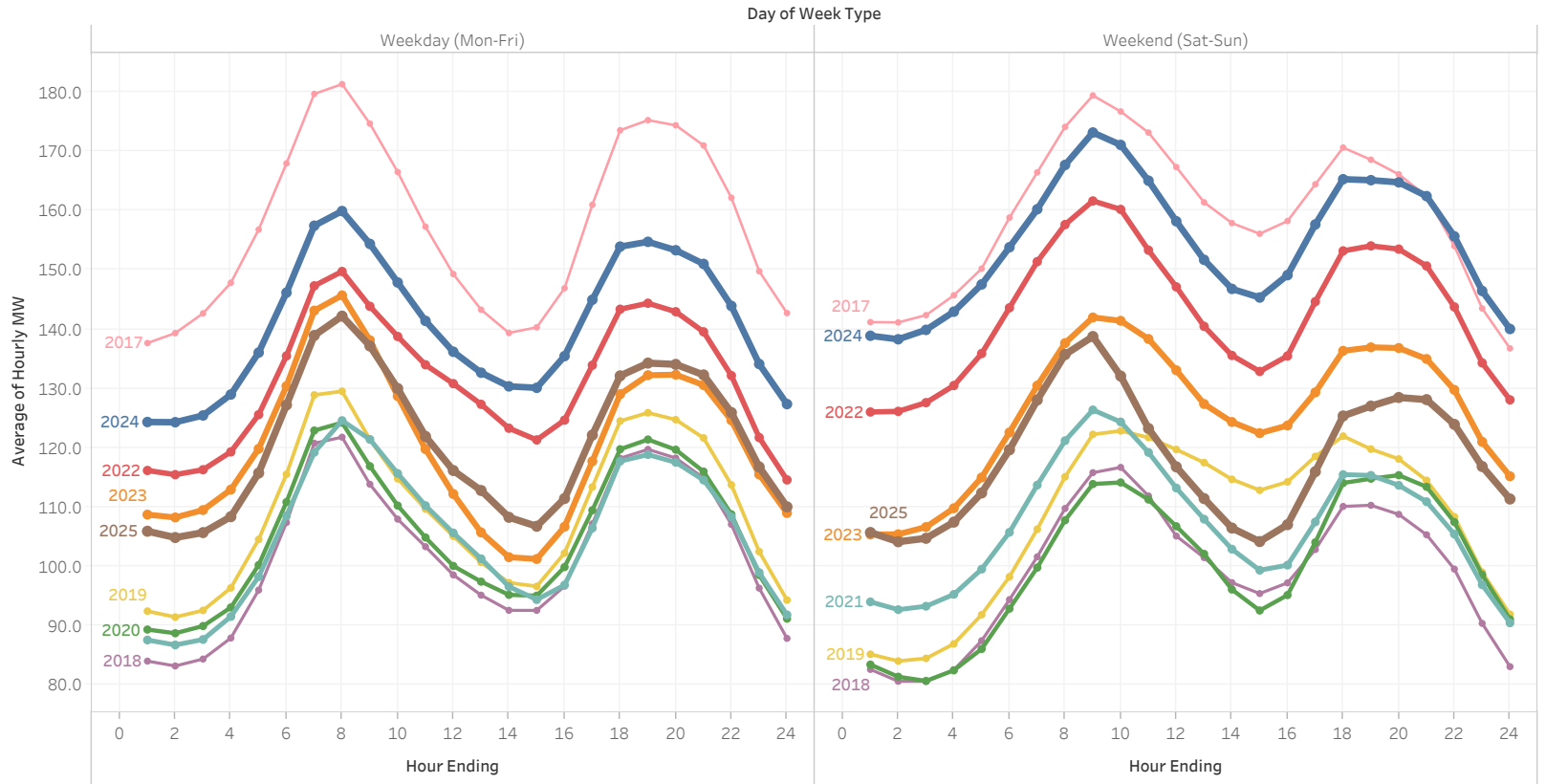
- Residential
- Small General
- Medium General
- Large General
- Large Industrial
- Large Irrigation
- Small Irrigation

## Year of Date

- 2025
- 2024
- 2023
- 2022
- 2025
- 2019
- 2020
- 2018
- 2017

AMI data updated through:

Tue, January 21, 2025



# Revenue Class Hourly Demand

By Year for Revenue Class: **Small General, Medium General, Large General** in Month: **January**

Select filters: Year All Month January

**Billed Revenue Class**

- In
- Out

**Revenue Class**

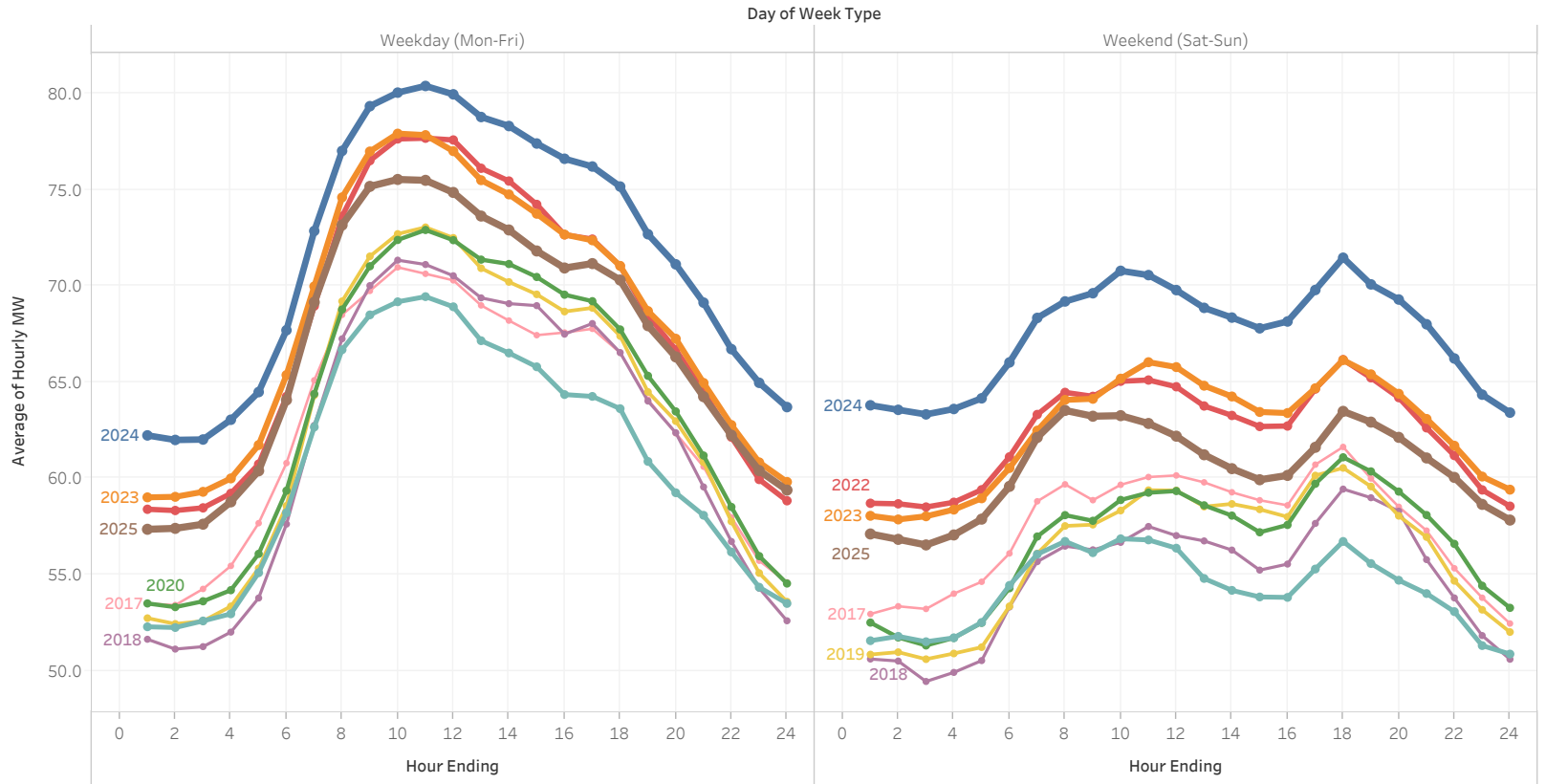
- Residential
- Small General
- Medium General
- Large General
- Large Industrial
- Large Irrigation
- Small Irrigation

**Year of Date**

- 2025
- 2024
- 2023
- 2022
- 2021
- 2020
- 2019
- 2018
- 2017

AMI data updated through:

Tue, January 21, 2025



# Revenue Class Cumulative Energy

## By Year for Revenue Class: All in Month: January

Select filters: Year: All Month: January Month-Day: All

Billed Revenue Class

- In
- Out

Revenue Class

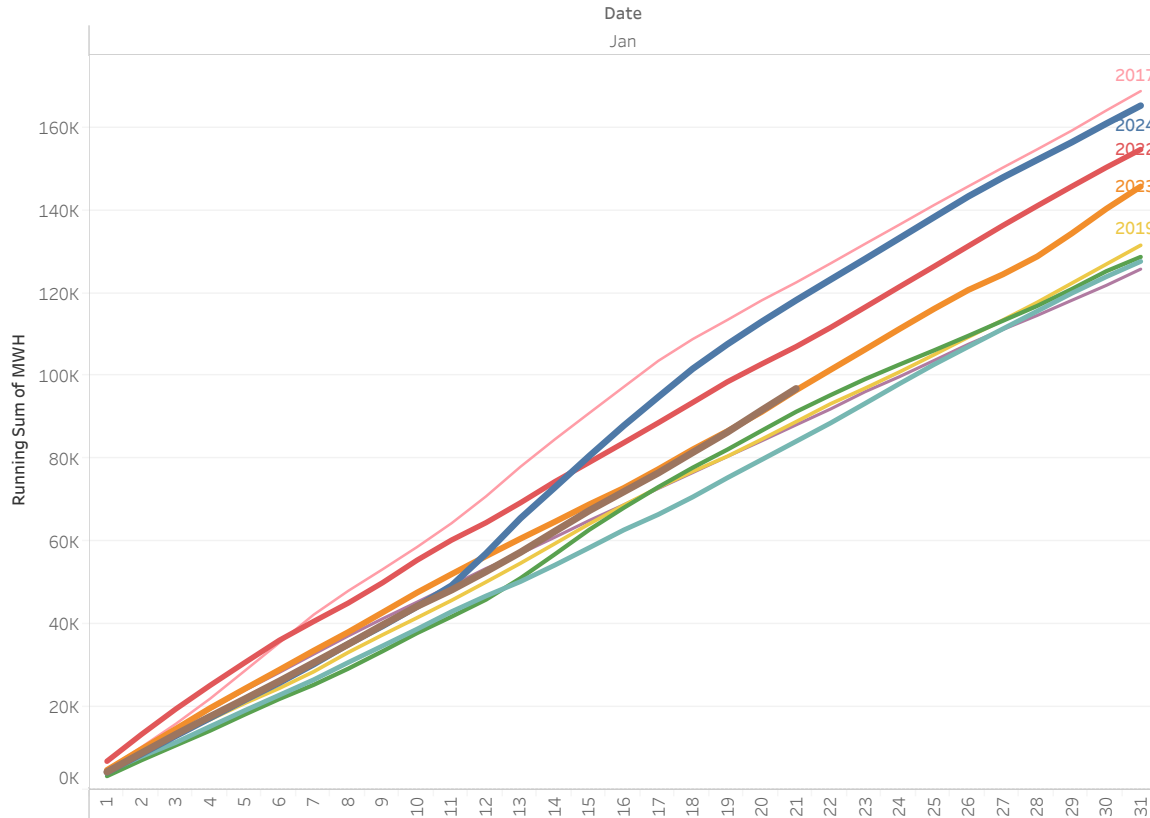
- Residential
- Small General
- Medium General
- Large General
- Large Industrial
- Large Irrigation
- Small Irrigation

Year of Date

- 2025
- 2024
- 2023
- 2022
- 2021
- 2020
- 2019
- 2018
- 2017

AMI data updated through:

Tue, January 21, 2025



Year Over Year Summary:  
(hover to highlight year)

Year of Date	MWH	MWH Difference	% Difference
2017	168,832		
2018	125,823	-43,009	-25.47%
2019	131,588	5,765	4.58%
2020	128,769	-2,819	-2.14%
2021	127,680	-1,089	-0.85%
2022	154,735	27,054	21.19%
2023	145,780	-8,955	-5.79%
2024	165,324	19,544	13.41%
2025	96,960	-68,365	-41.35%

Note:  
Totals do not include non-AMI meter readings.

# Revenue Class Cumulative Energy

By Year for Revenue Class: **Residential** in Month: **January**

Select filters: Year All Month January Month-Day All

**Billed Revenue Class**

- In
- Out

**Revenue Class**

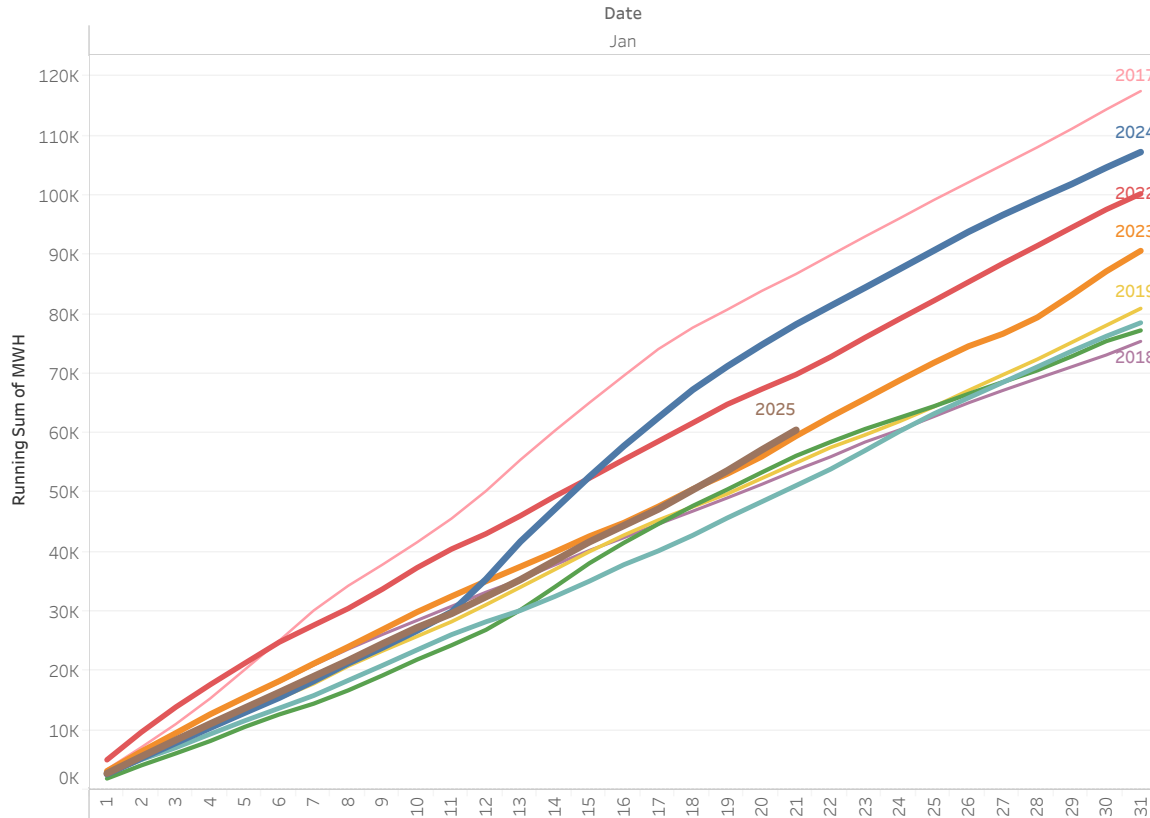
- Residential
- Small General
- Medium General
- Large General
- Large Industrial
- Large Irrigation
- Small Irrigation

**Year of Date**

- 2025
- 2024
- 2023
- 2022
- 2021
- 2020
- 2019
- 2018
- 2017

AMI data updated through:

Tue, January 21, 2025



Year Over Year Summary:  
(hover to highlight year)

Year of Date	MWH	MWH Difference	% Difference
2017	117,538		
2018	75,446	-42,091	-35.81%
2019	80,977	5,531	7.33%
2020	77,287	-3,690	-4.56%
2021	78,577	1,290	1.67%
2022	100,267	21,690	27.60%
2023	90,677	-9,590	-9.56%
2024	107,279	16,602	18.31%
2025	60,529	-46,750	-43.58%

Note:  
Totals do not include non-AMI meter readings.

# Revenue Class Cumulative Energy

By Year for Revenue Class: **Small General, Medium General, Large General** in Month: **January**

Select filters: Year All Month January Month-Day All

**Billed Revenue Class**

- In
- Out

**Revenue Class**

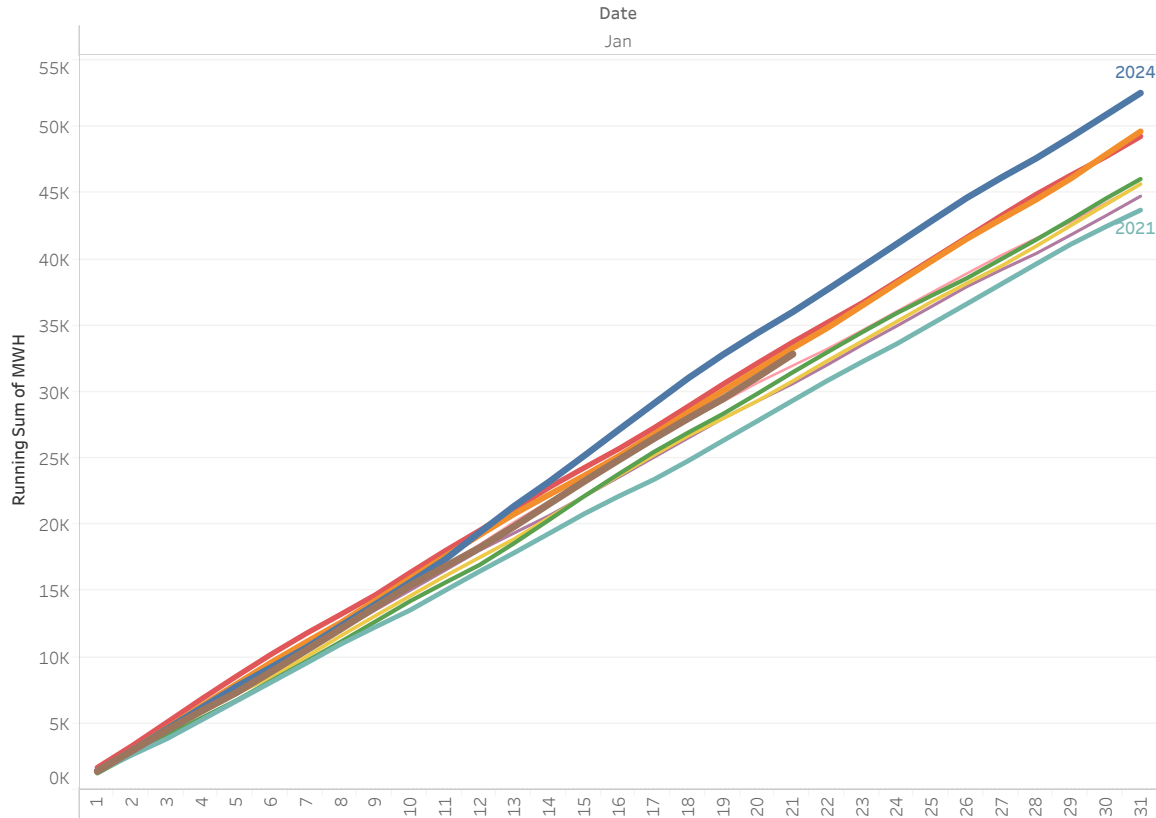
- Residential
- Small General
- Medium General
- Large General
- Large Industrial
- Large Irrigation
- Small Irrigation

**Year of Date**

- 2025
- 2024
- 2023
- 2022
- 2021
- 2020
- 2019
- 2018
- 2017

AMI data updated through:

Tue, January 21, 2025



Year Over Year Summary:  
(hover to highlight year)

Year of Date	MWH	MWH Difference	% Difference
2017	45,662		
2018	44,766	-896	-1.96%
2019	45,683	917	2.05%
2020	46,063	380	0.83%
2021	43,718	-2,346	-5.09%
2022	49,274	5,557	12.71%
2023	49,650	376	0.76%
2024	52,549	2,899	5.84%
2025	32,862	-19,687	-37.46%

Note:  
Totals do not include non-AMI meter readings.

## Past Due AR in Dollars for Selected Revenue Classes:

All

Balance Aging: 30 Days | 60 Days | 90+ Days

Consumer Class Selection:

Regular

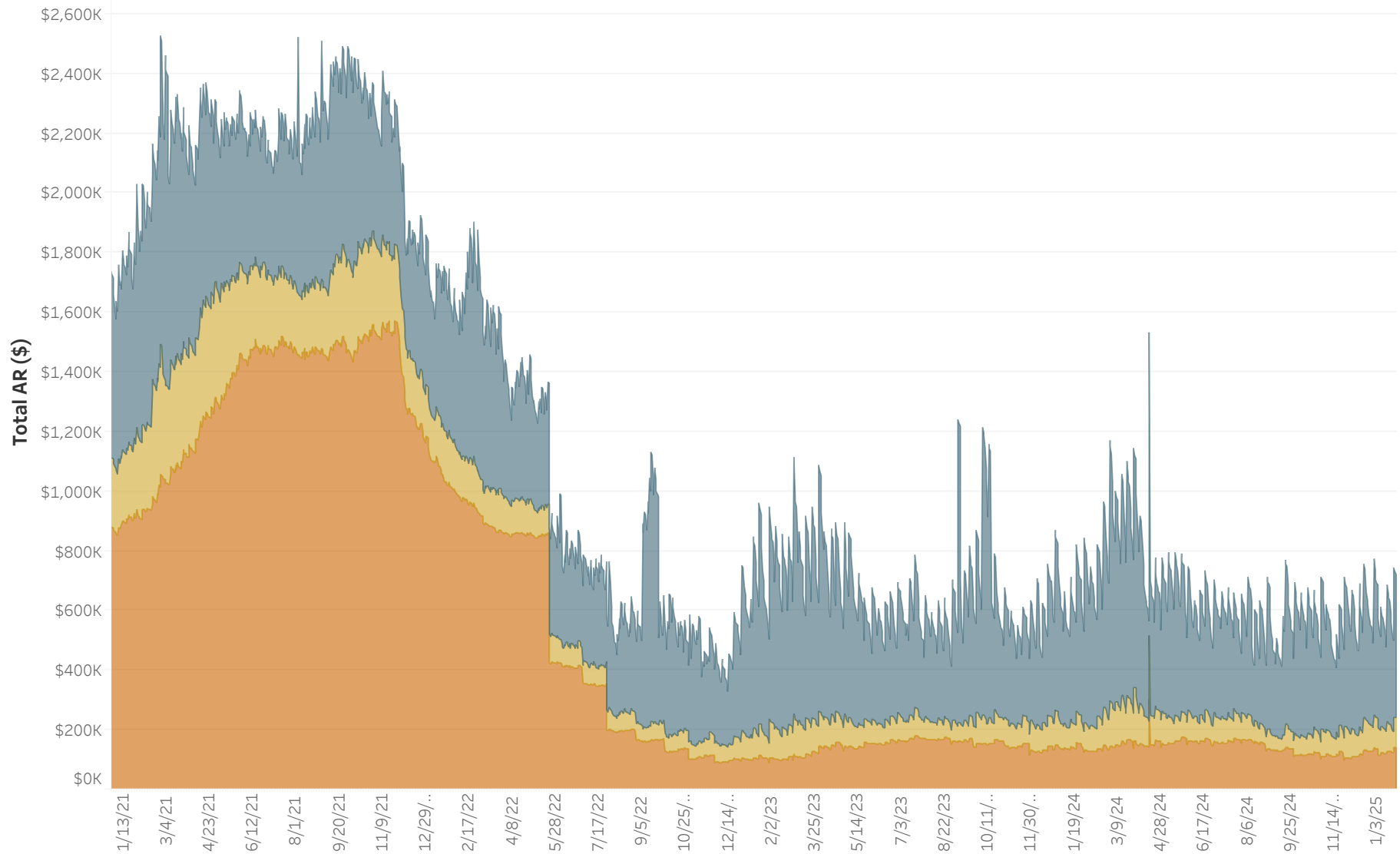
Revenue Class Selection:

All

Service Status:

All

	Accounts	Dollars
<b>30 Days</b>	3,238	\$481,818
<b>60 Days</b>	814	\$100,925
<b>90+ Days</b>	1,002	\$138,227
<b>Past Due</b>	<b>5,054</b>	<b>\$720,969</b>
<b>Total AR</b>	<b>53,585</b>	<b>\$6,422,432</b>



AR data as of 1/26/2025. Data source is AR Balance History Tableau report view.



## Past Due AR in Dollars for Selected Revenue Classes:

All

Balance Aging: [30 Days](#) | [60 Days](#) | [90+ Days](#)

Consumer Class Selection:

Regular

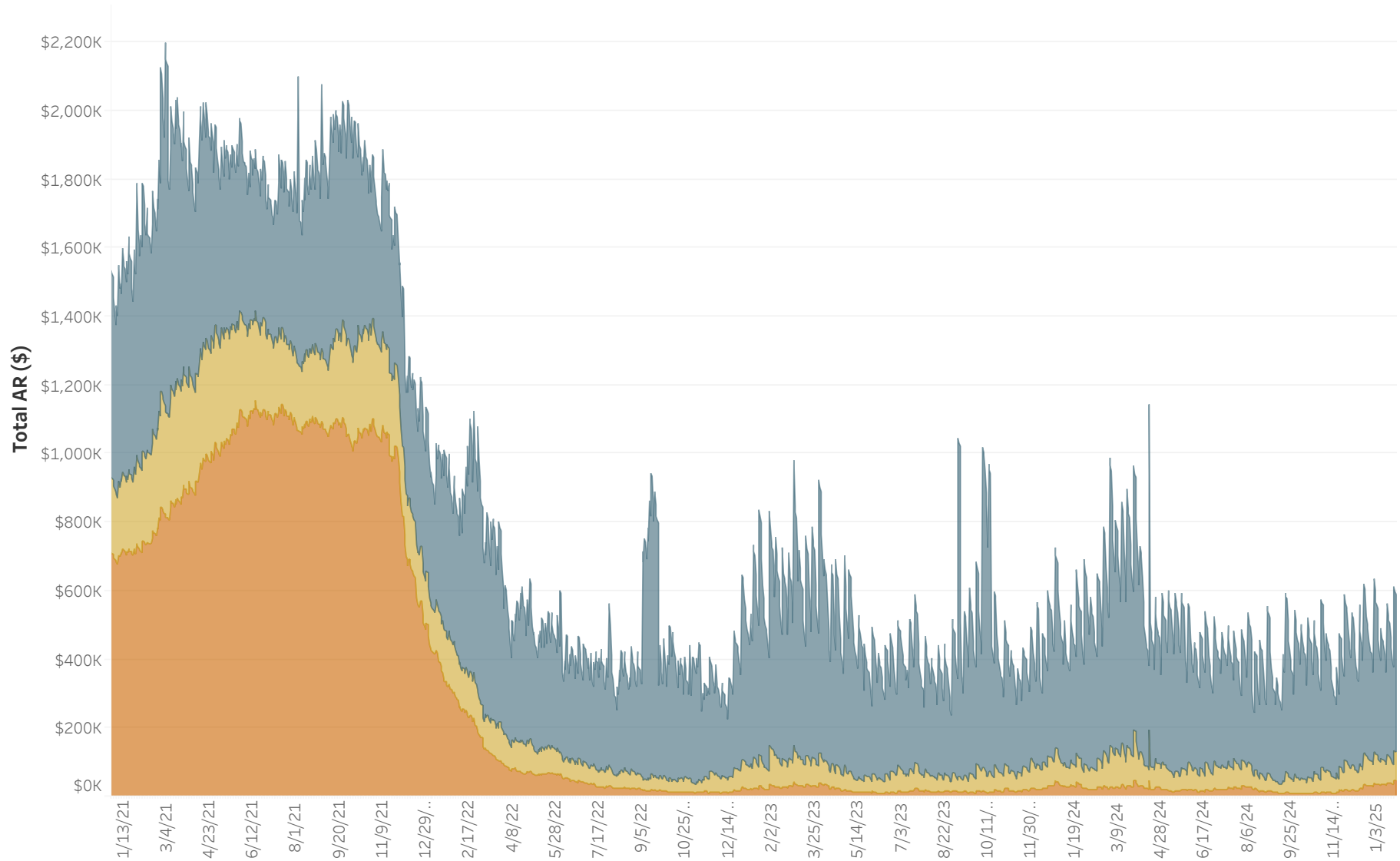
Revenue Class Selection:

All

Service Status:

Active

	Accounts	Dollars
<b>30 Days</b>	3,086	\$458,866
<b>60 Days</b>	719	\$82,372
<b>90+ Days</b>	432	\$46,529
<b>Past Due</b>	<b>4,237</b>	<b>\$587,767</b>
<b>Total AR</b>	<b>52,138</b>	<b>\$6,263,065</b>



AR data as of 1/26/2025. Data source is AR Balance History Tableau report view.

# Past Due AR in Dollars for Selected Revenue Classes:

## Residential

Balance Aging: 30 Days | 60 Days | 90+ Days

Consumer Class Selection:

Regular

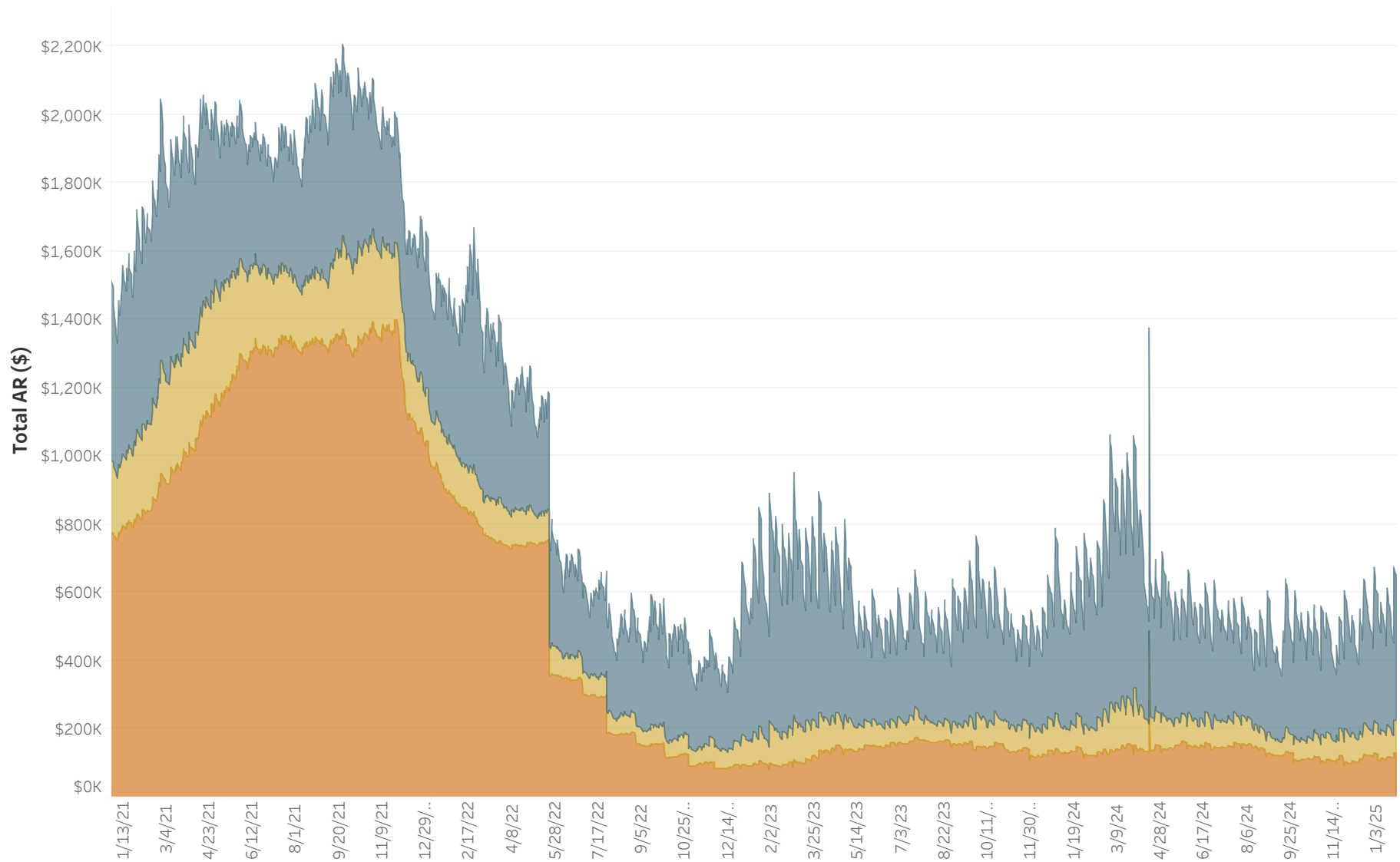
Revenue Class Selection:

Residential

Service Status:

All

	Accounts	Dollars
<b>30 Days</b>	2,793	\$428,221
<b>60 Days</b>	758	\$94,385
<b>90+ Days</b>	940	\$129,311
<b>Past Due</b>	<b>4,491</b>	<b>\$651,917</b>
<b>Total AR</b>	<b>44,462</b>	<b>\$4,330,367</b>



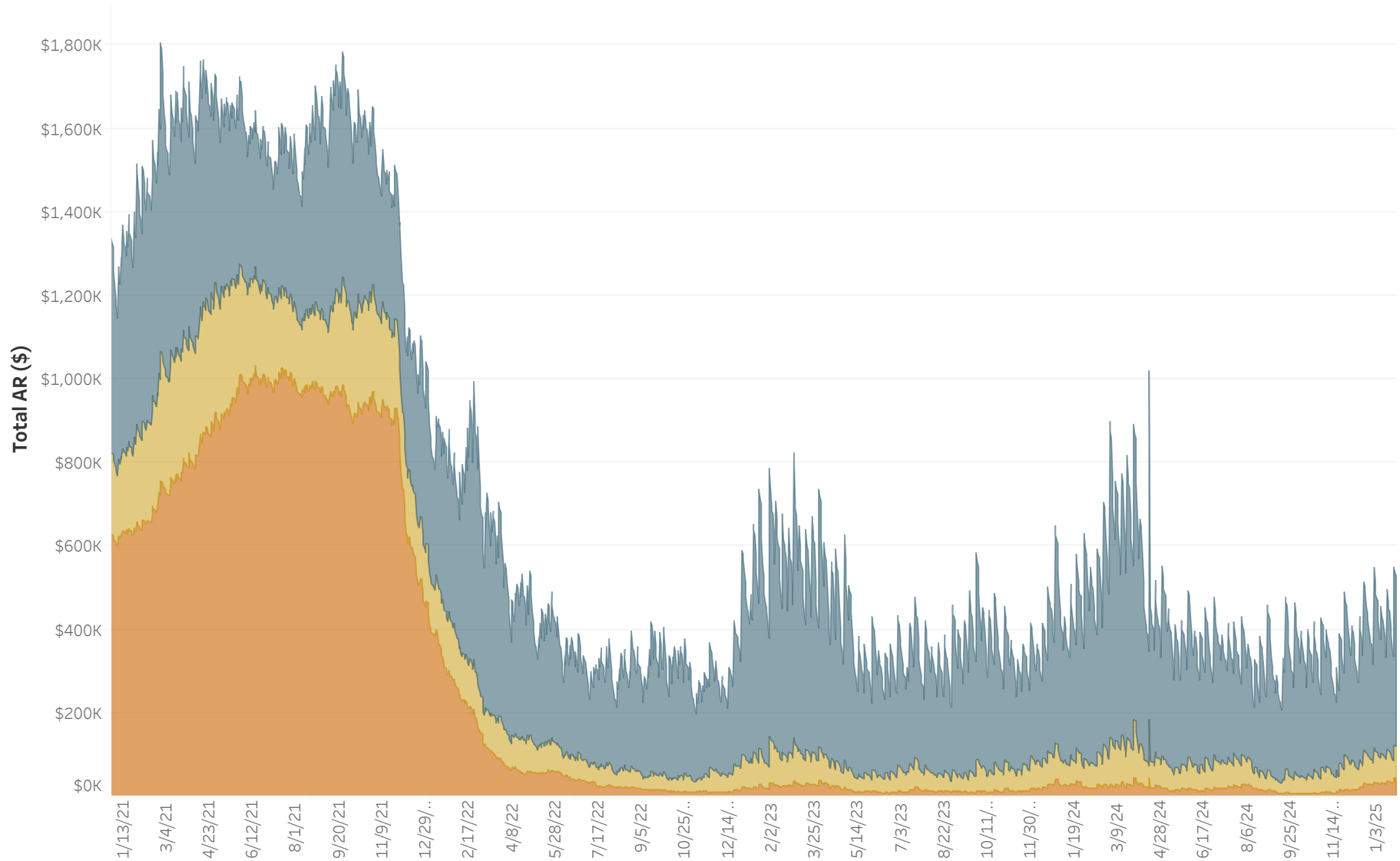
AR data as of 1/26/2025. Data source is AR Balance History Tableau report view.

# Past Due AR in Dollars for Selected Revenue Classes:

## Residential

Balance Aging: 30 Days | 60 Days | 90+ Days

Consumer Class Selection:	Accounts	Dollars
Regular		
<b>30 Days</b>	2,652	\$408,354
<b>60 Days</b>	671	\$77,634
Revenue Class Selection:		
Residential		
<b>90+ Days</b>	388	\$42,217
<b>Past Due</b>	<b>3,711</b>	<b>\$528,206</b>
Service Status:		
Active		
<b>Total AR</b>	<b>43,096</b>	<b>\$4,183,056</b>



AR data as of 1/26/2025. Data source is AR Balance History Tableau report view.

# Past Due AR in Dollars for Selected Revenue Classes:

## Residential

Balance Aging: 30 Days | 60 Days | 90+ Days

Consumer Class Selection:

Regular

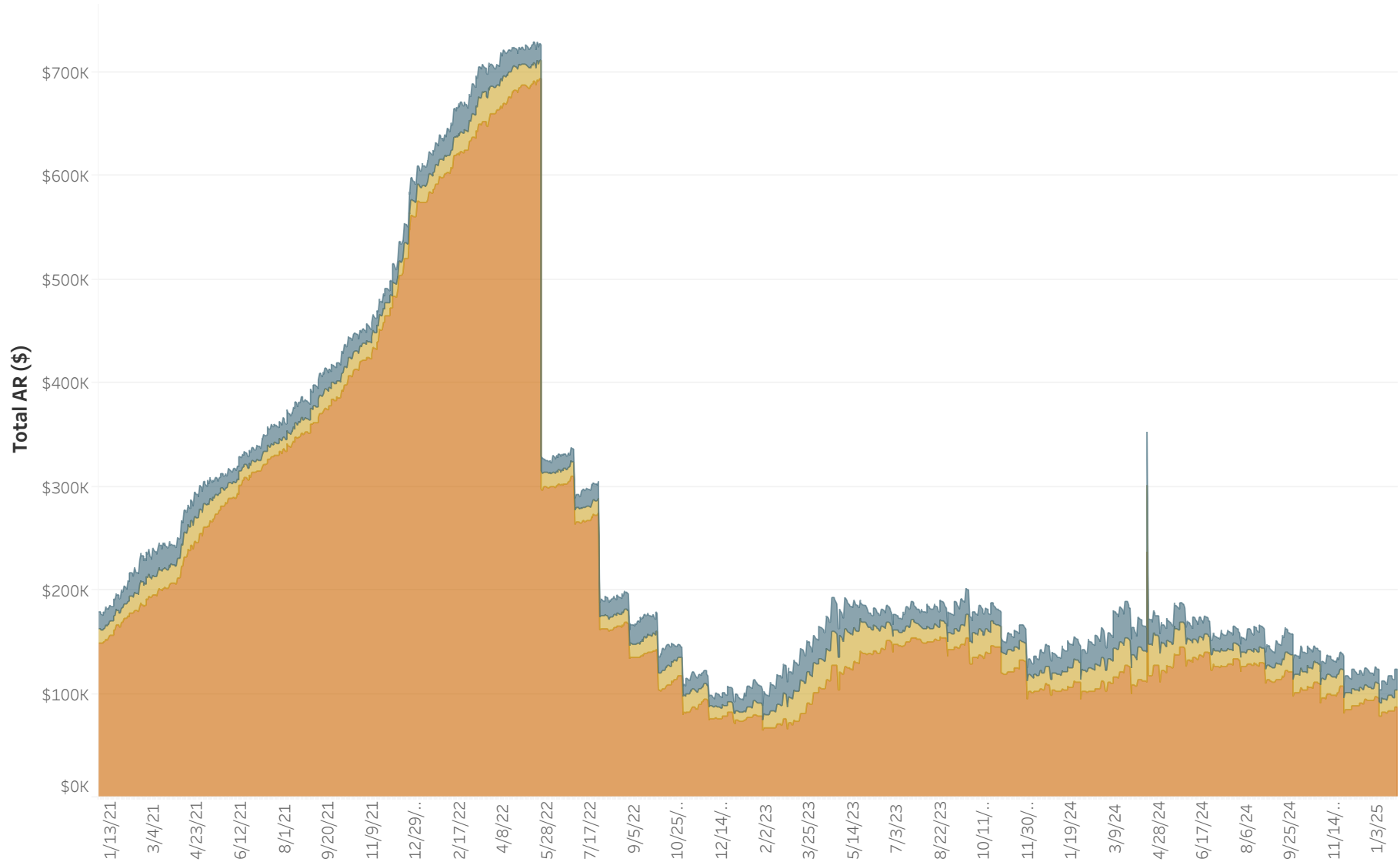
Revenue Class Selection:

Residential

Service Status:

Inactive

	Accounts	Dollars
<b>30 Days</b>	137	\$19,323
<b>60 Days</b>	87	\$16,535
<b>90+ Days</b>	550	\$86,992
<b>Past Due</b>	774	\$122,850
<b>Total AR</b>	1,262	\$143,301



AR data as of 1/26/2025. Data source is AR Balance History Tableau report view.