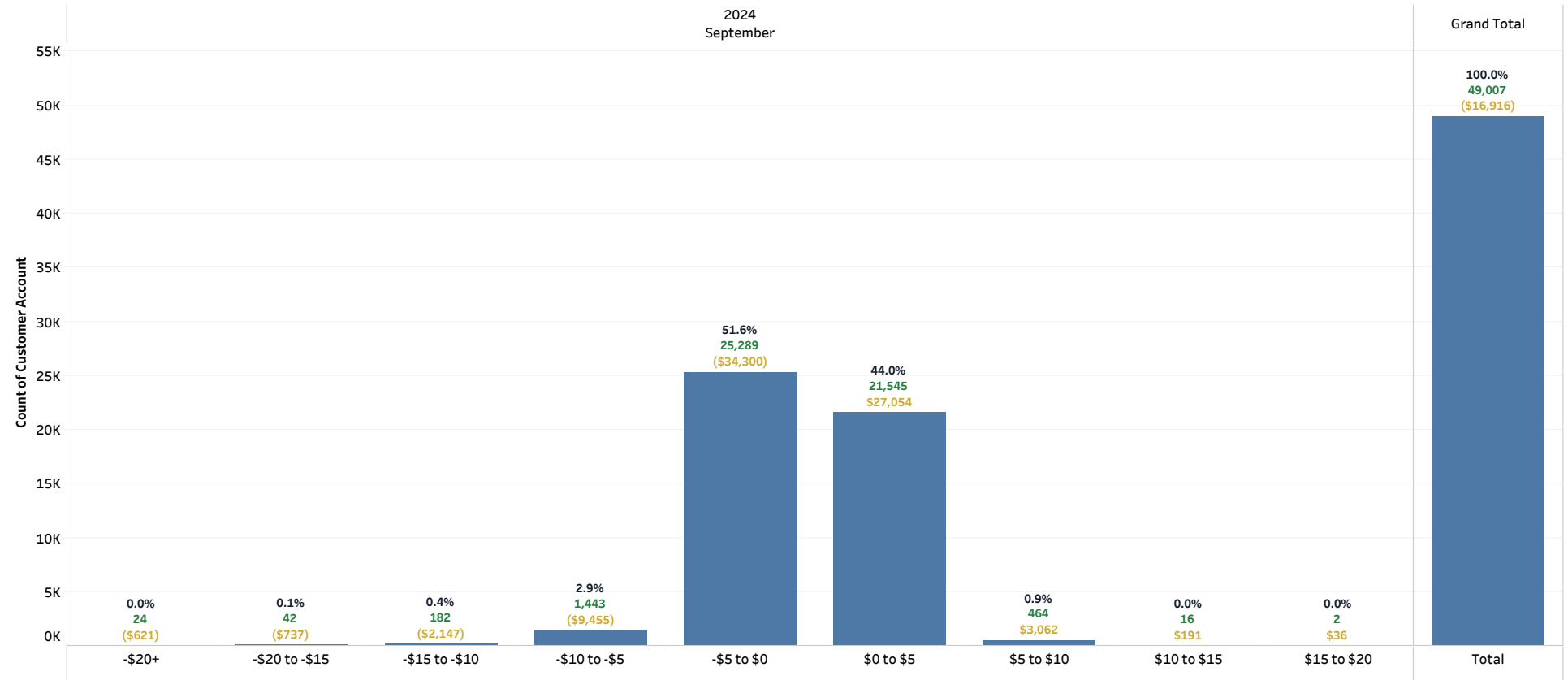


Residential Demand Billing Impact Analysis by Customer Account (Includes Discounts) Billing Date: All

(Note: The analysis shown is aggregated to the customer account and a customer can have multiple accounts.)

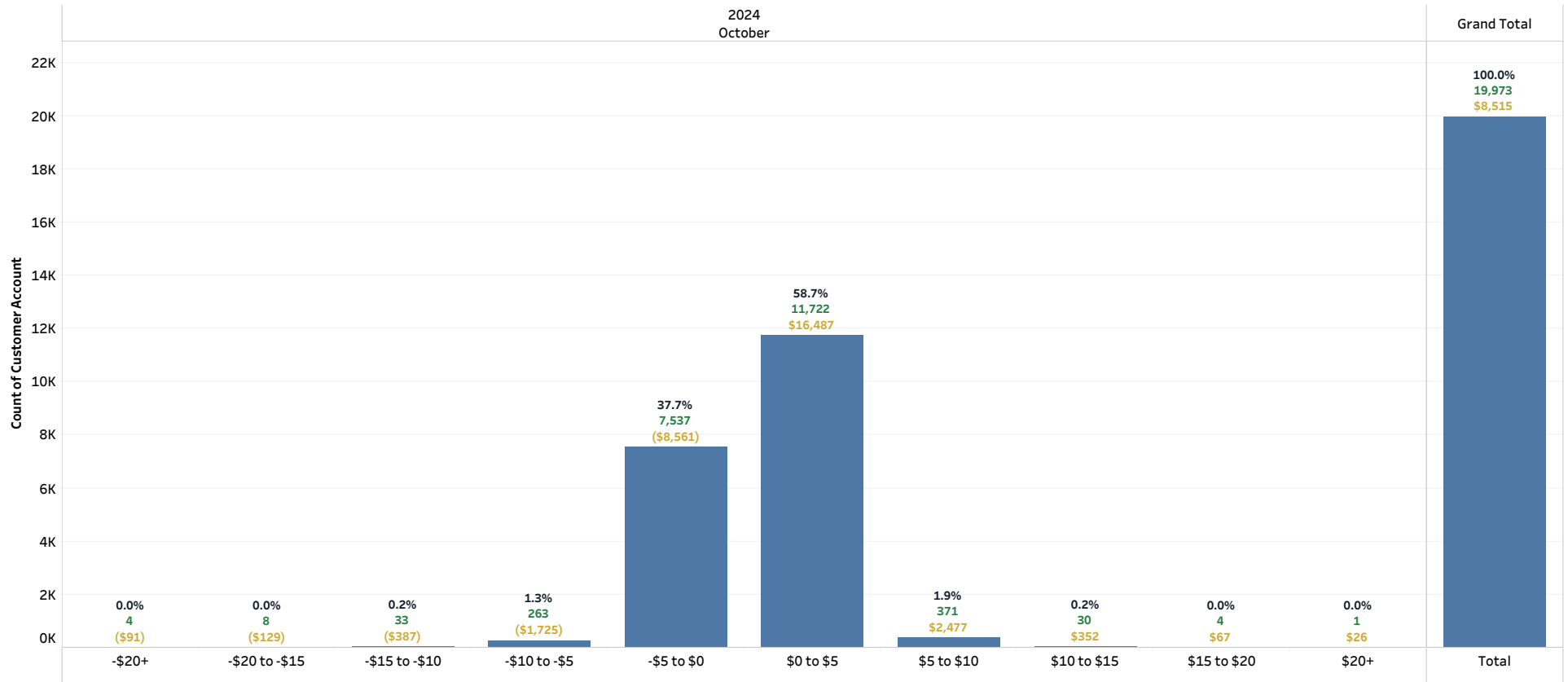
(% of Total Accounts | # of Accounts | Total Net Impact)



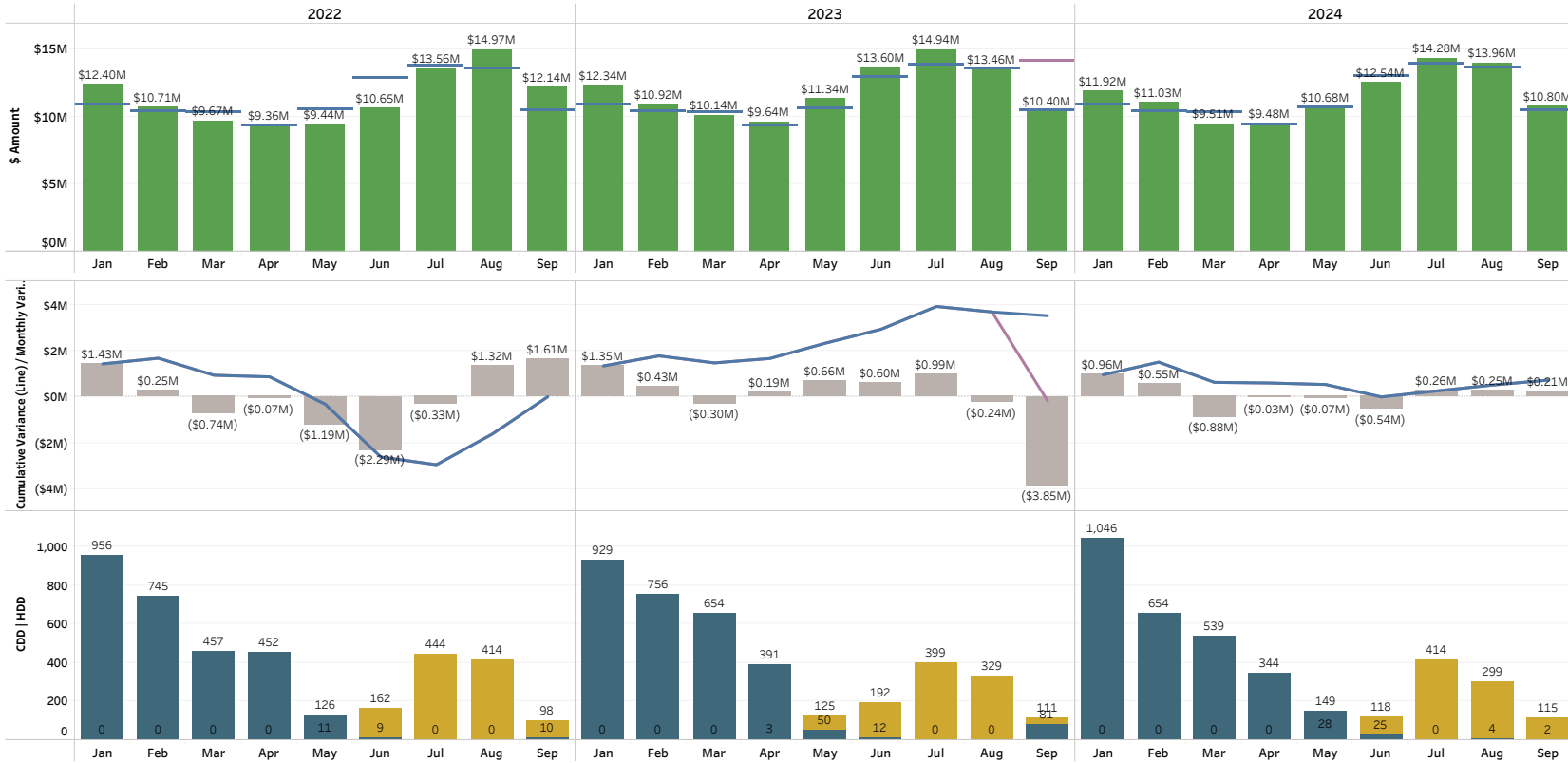
Residential Demand Billing Impact Analysis by Customer Account (Includes Discounts) Billing Date: All

(Note: The analysis shown is aggregated to the customer account and a customer can have multiple accounts.)

(% of Total Accounts | # of Accounts | Total Net Impact)



Cumulative Retail Revenue Budget vs Actuals (Original and Amended Budget): All



Rate Class
All

Filter Date Year
Multiple values

Filter Date Month
Multiple values

Legend

- Budget
- Amended Budget
- Actual
- Cumulative Variance Original
- Cumulative Variance Amended
- Month Over / (Under)
- Heating Degree Days
- Cooling Degree Days

Note: Cumulative budget amendment changes are reflected in the month of September.

Cooling Degree Days (CDD) are a measure of how hot the temperature was on a given day or during a period of days. CDD's quantify the demand for energy needed to cool buildings. The higher the CDD's, the hotter the region is.

Heating Degree Days (HDD) are a measure of how cold the temperature was on a given day or during a period of days. HDD's quantify the demand for energy needed to heat buildings. The higher the HDD's, the colder the region is.

Cumulative Retail Revenue Budget vs Actuals (Original and Amended Budget): Residential Sales

Rate Class
Residential Sales

Filter Date Year
Multiple values

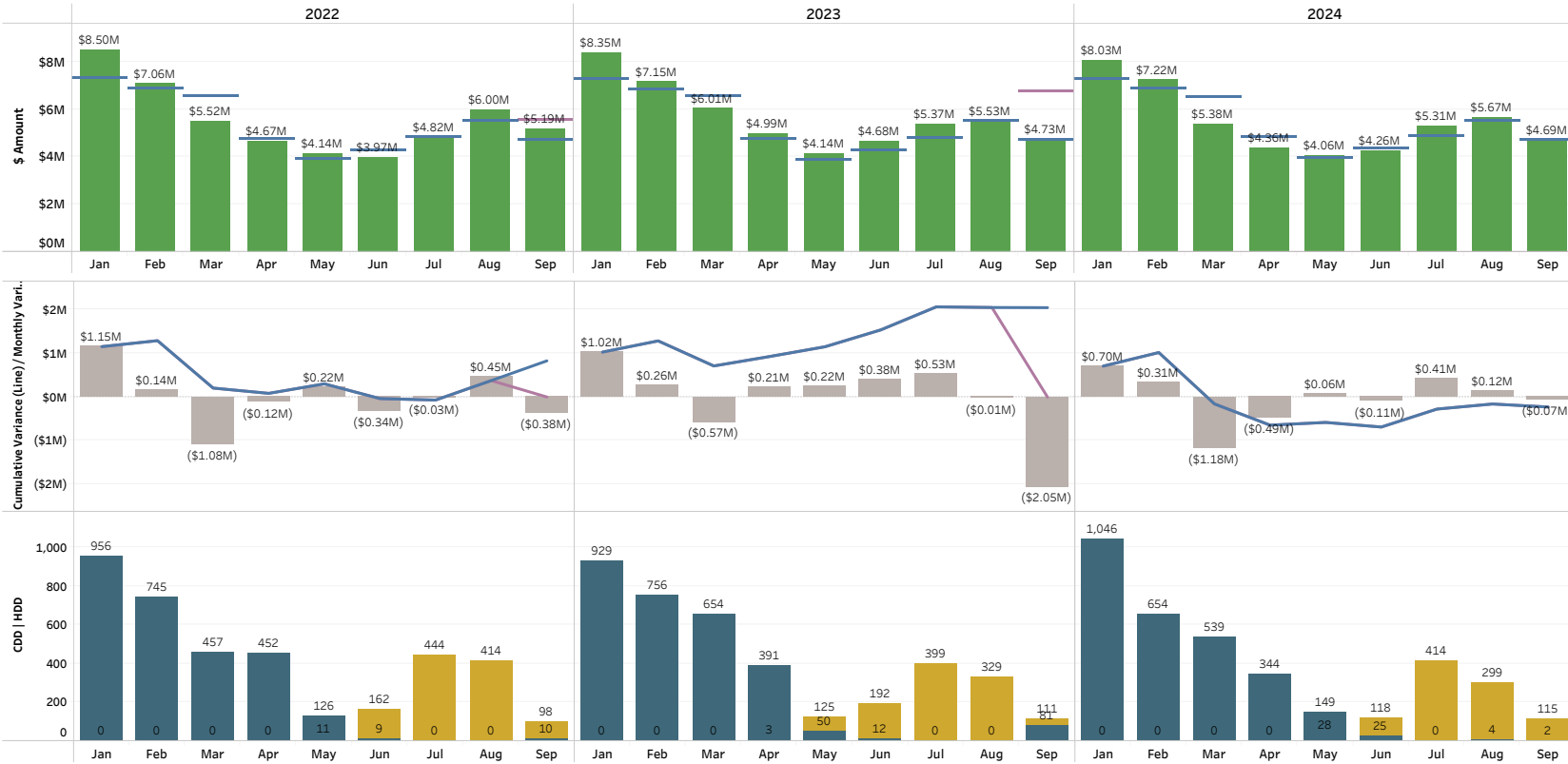
Filter Date Month
Multiple values

- Legend
- Budget
 - Amended Budget
 - Actual
 - Cumulative Variance Original
 - Cumulative Variance Amended
 - Month Over / (Under)
 - Heating Degree Days
 - Cooling Degree Days

Note: Cumulative budget amendment changes are reflected in the month of September.

Cooling Degree Days (CDD) are a measure of how hot the temperature was on a given day or during a period of days. CDD's quantify the demand for energy needed to cool buildings. The higher the CDD's, the hotter the region is.

Heating Degree Days (HDD) are a measure of how cold the temperature was on a given day or during a period of days. HDD's quantify the demand for energy needed to heat buildings. The higher the HDD's, the colder the region is.



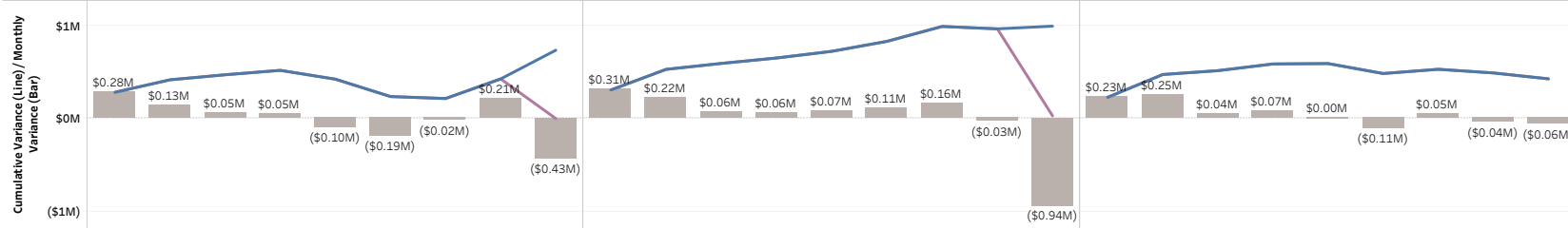
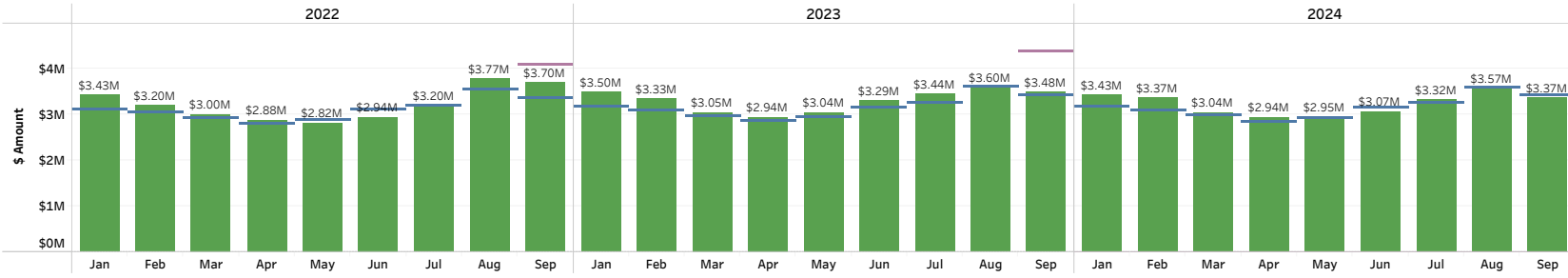
Cumulative Retail Revenue Budget vs Actuals (Original and Amended Budget): Large General Service Sales, Medium General Service Sales, Small General Service Sales

Rate Class
Multiple values

Filter Date Year
Multiple values

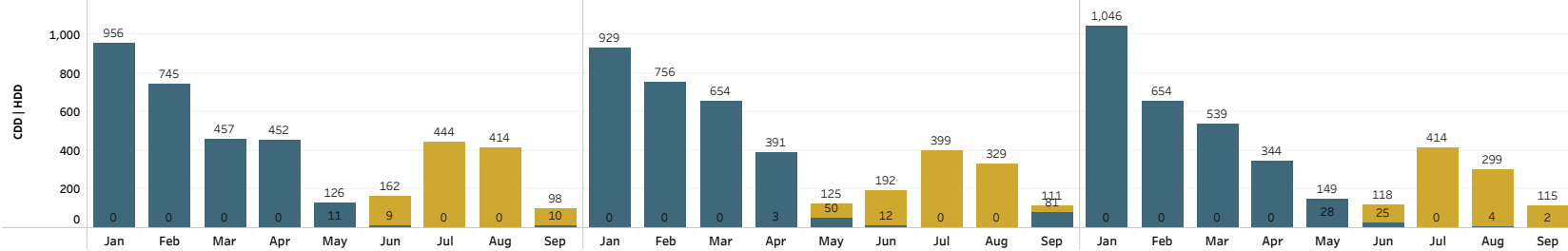
Filter Date Month
Multiple values

- Legend**
- Budget
 - Amended Budget
 - Actual
 - Cumulative Variance Original
 - Cumulative Variance Amended
 - Month Over / (Under)
 - Heating Degree Days
 - Cooling Degree Days



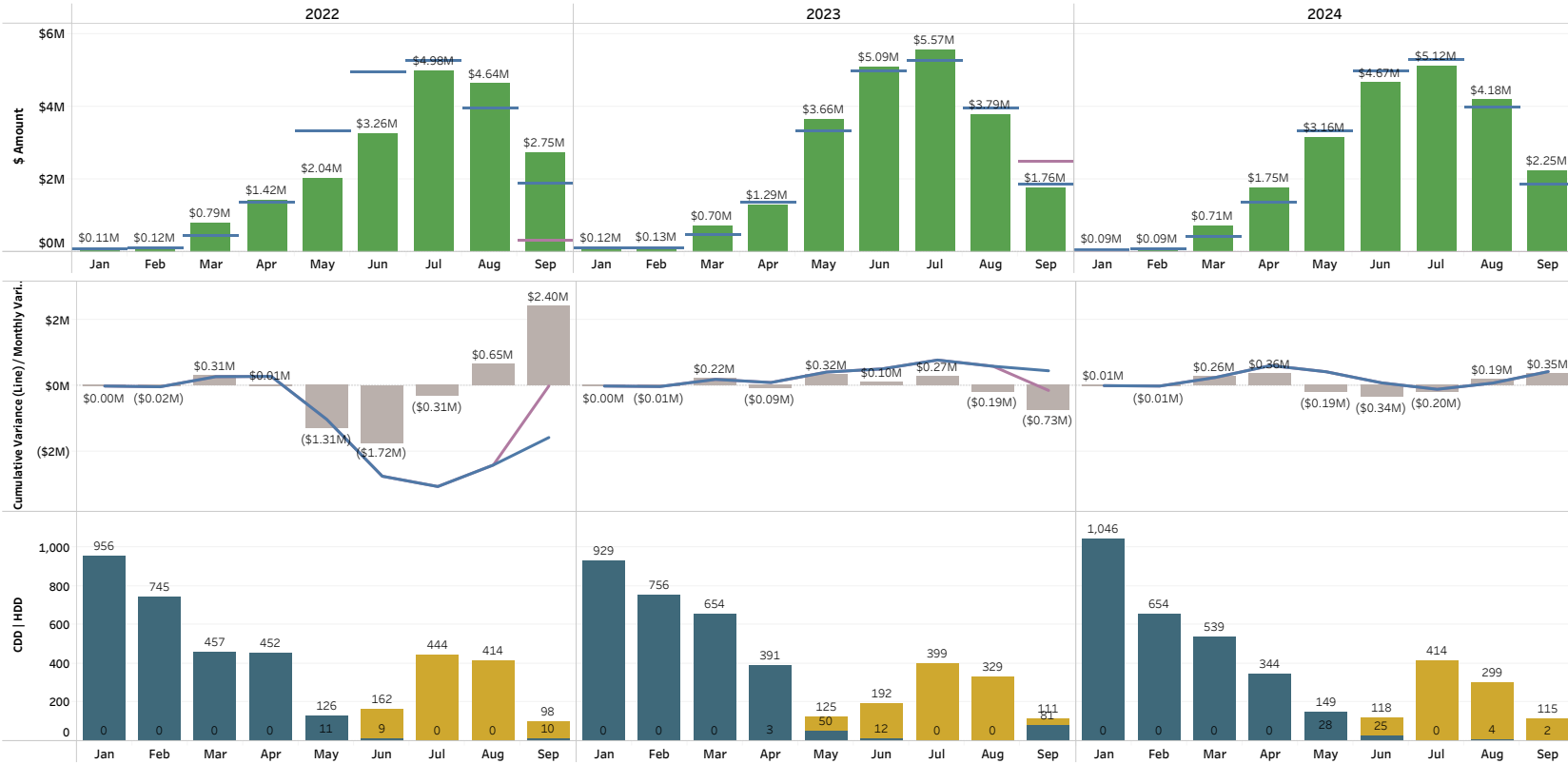
Note: Cumulative budget amendment changes are reflected in the month of September.

Cooling Degree Days (CDD) are a measure of how hot the temperature was on a given day or during a period of days. CDD's quantify the demand for energy needed to cool buildings. The higher the CDD's, the hotter the region is.



Heating Degree Days (HDD) are a measure of how cold the temperature was on a given day or during a period of days. HDD's quantify the demand for energy needed to heat buildings. The higher the HDD's, the colder the region is.

Cumulative Retail Revenue Budget vs Actuals (Original and Amended Budget): Large Irrigation Sales



Rate Class
Large Irrigation Sales

Filter Date Year
Multiple values

Filter Date Month
Multiple values

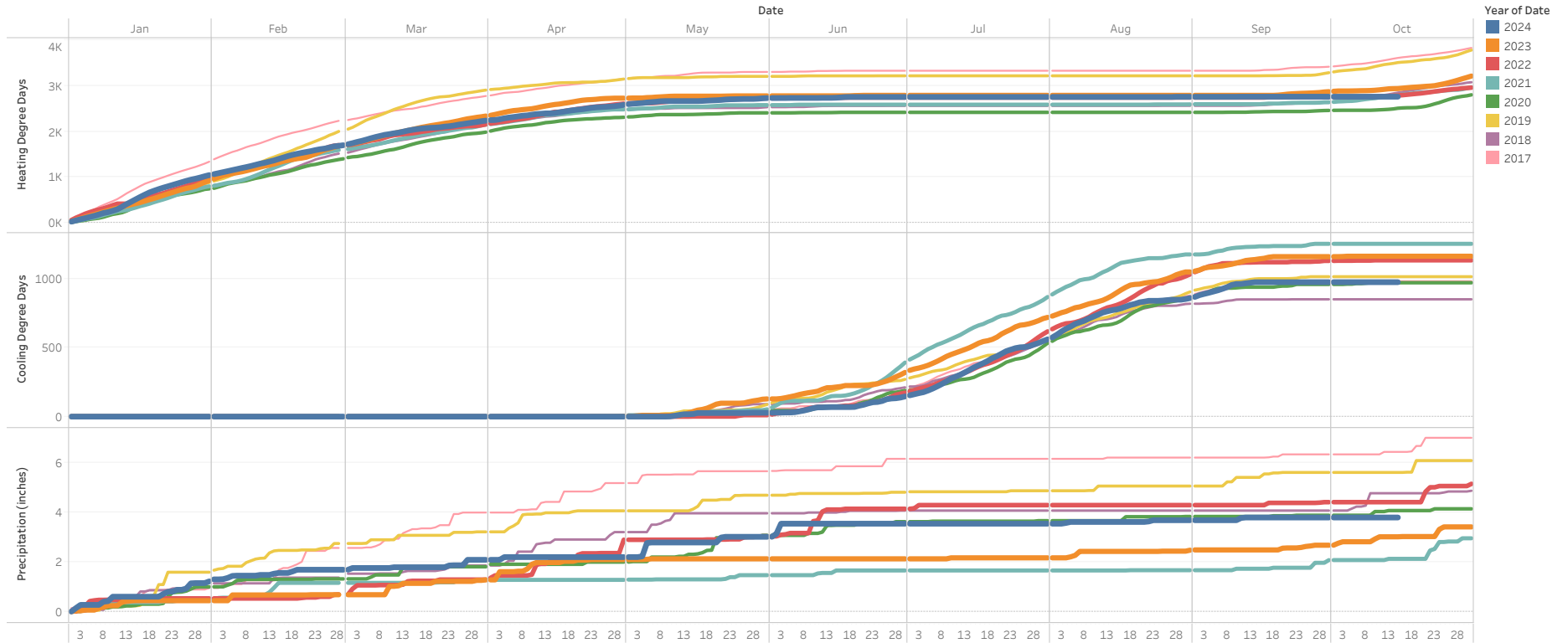
- Legend
- Budget
 - Amended Budget
 - Actual
 - Cumulative Variance Original
 - Cumulative Variance Amended
 - Month Over / (Under)
 - Heating Degree Days
 - Cooling Degree Days

Note: Cumulative budget amendment changes are reflected in the month of September.

Cooling Degree Days (CDD) are a measure of how hot the temperature was on a given day or during a period of days. CDD's quantify the demand for energy needed to cool buildings. The higher the CDD's, the hotter the region is.

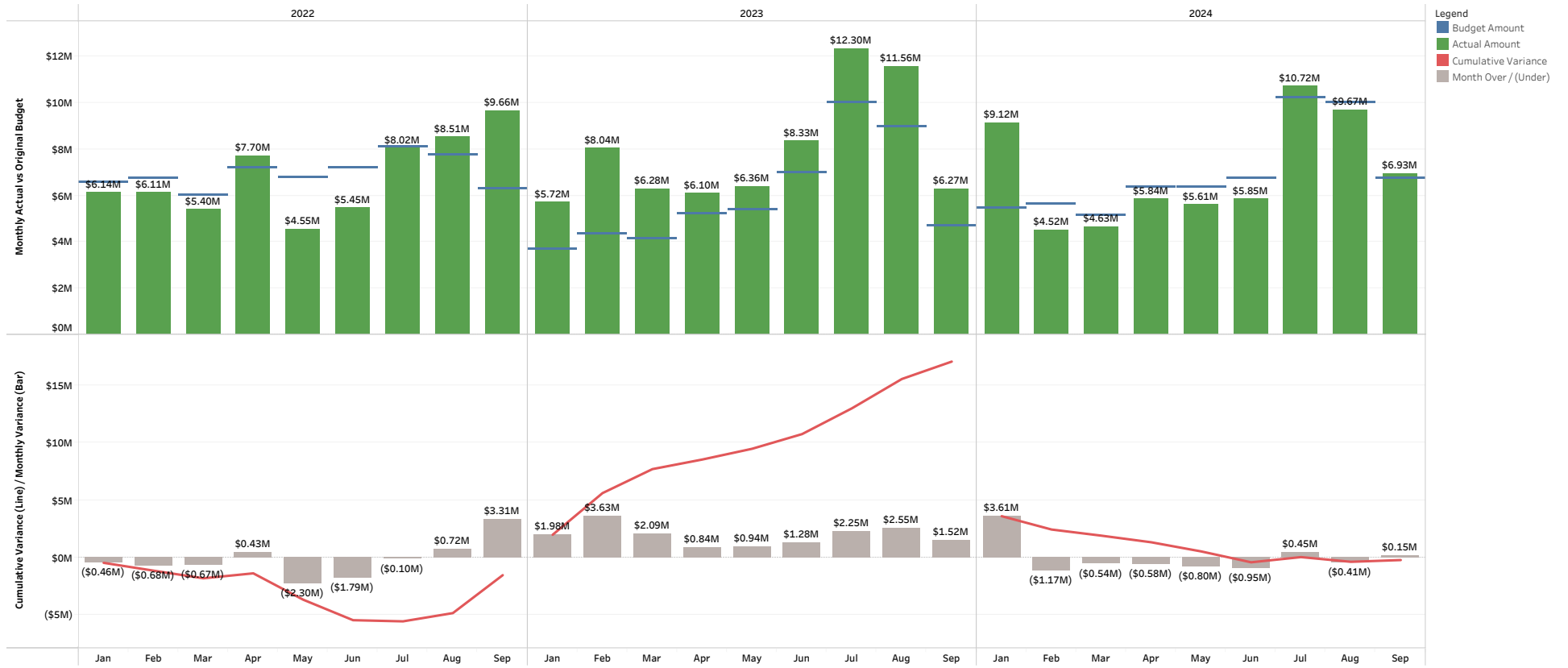
Heating Degree Days (HDD) are a measure of how cold the temperature was on a given day or during a period of days. HDD's quantify the demand for energy needed to heat buildings. The higher the HDD's, the colder the region is.

Cumulative Daily Weather by Year

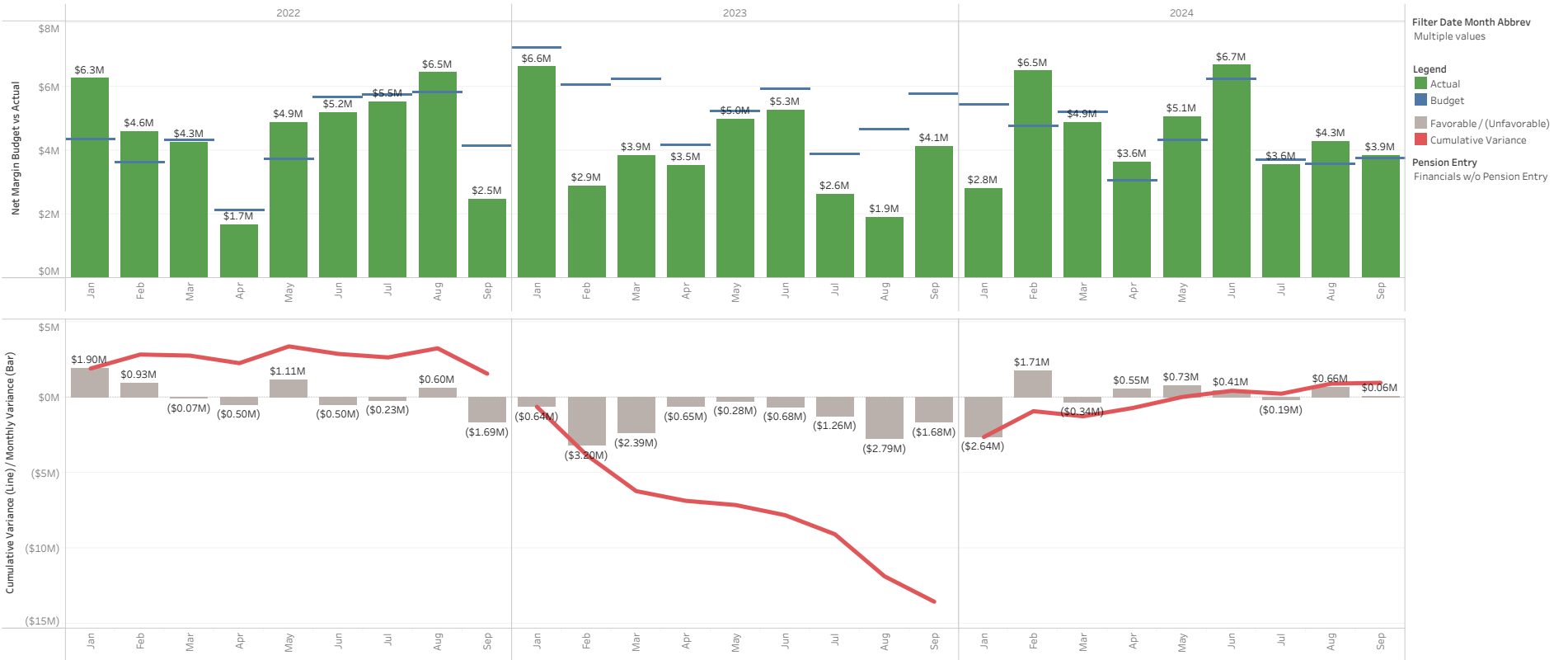


Daily weather at Tri-Cities Airport (USW00024163), sourced from NOAA website, <https://www.ncdc.noaa.gov/cdo-web/search?datasetid=GHCND>

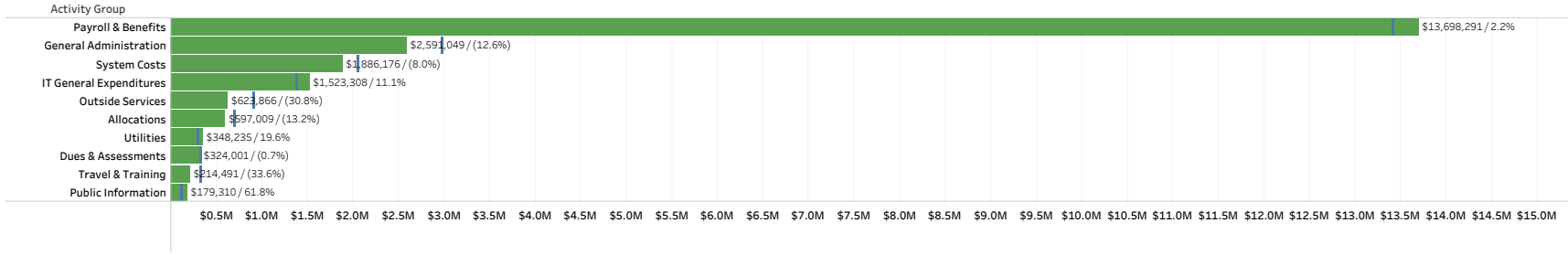
Cumulative Net Power Cost Budget vs Actuals (Original Budget Only): All



Cumulative Net Margin Original Budget vs Actuals



2024 Top 10 YTD O&M Actuals & Original Budget by Activity Group Through September



Enter Year
2024

Select Month
September

Top N - Activity Category
10

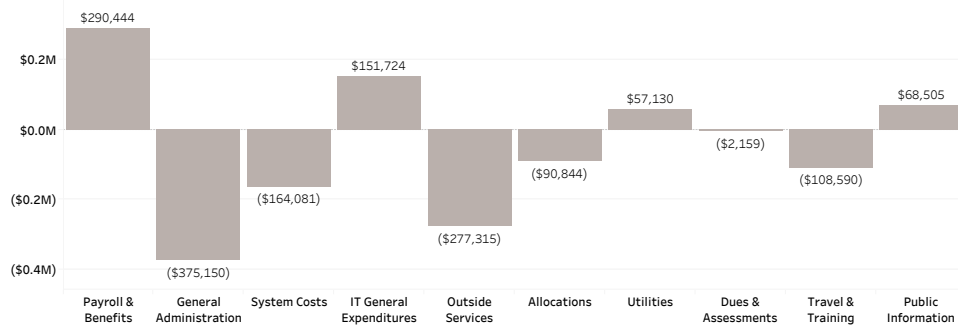
Dept #
All

Budget Version
 Actuals
 Amended Budget
 Original Budget

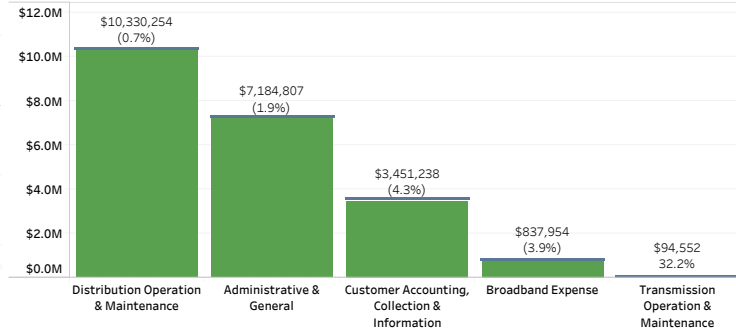
Pension Entry
Financials w/o Pension En..

Legend
■ YTD Budget
■ YTD Actuals
■ YTD Over/(Under)

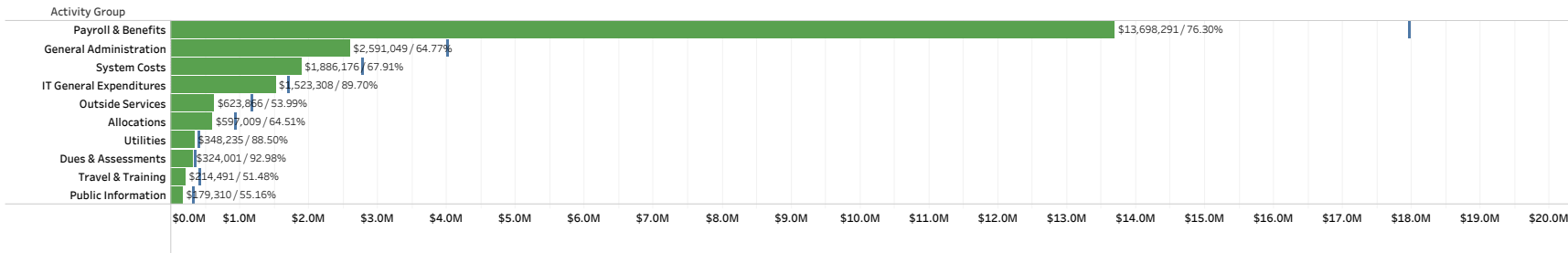
2024 Top 10, YTD O&M Budget Variance by Activity Group Through September



2024 YTD O&M Actuals & Original Budget by Financial Statement Group Through September



2024 Top 10 YTD O&M Actuals & Original Budget by Activity Group Through September
 % of Year: 75.00%



Enter Year
2024

Select Month
September

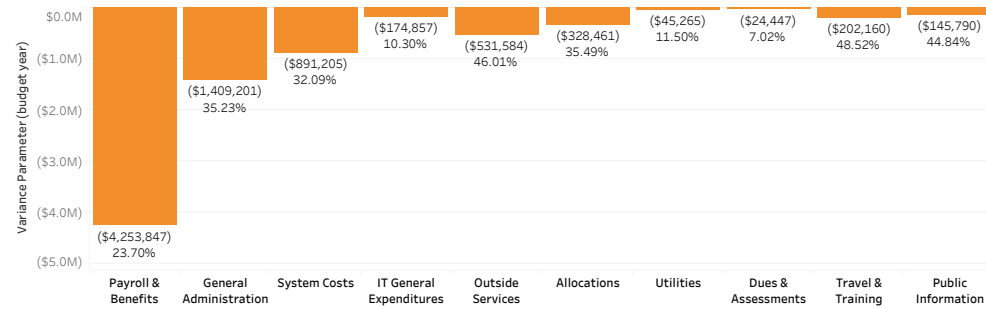
Top N - Activity Category
10

Dept #
All

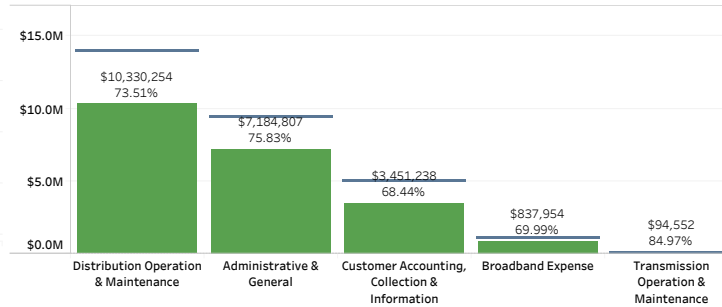
Budget Version
 Actuals
 Amended Budget
 Original Budget

Pension Entry
Financials w/o Pension Ent..

2024 Top 10, Remaining Budget Amount by Activity Group through September
 % of Year Remaining: 25.00%



2024 YTD O&M Actuals & Original Budget by Financial Statement Group Through September
 % of Year: 75.00%



Legend
 Budget
 YTD Actuals
 Remaining Budget

Capital Drill Down with 2024 Actuals & Original Budget

% of Year: 75.0%

Category	Group	Actual Amount	Budget Amount	% of Budget
Transmission	Transmission Projects	\$6,671,961	\$5,678,315	117.50%
Distribution	Capacity & Reliability	\$3,697,078	\$6,799,235	54.37%
	Customer Growth	\$5,696,638	\$8,641,661	65.92%
	General Plant	\$882,672	\$730,000	120.91%
	Other	\$125,775	\$188,760	66.63%
	Repair & Replace	\$3,461,655	\$3,154,801	109.73%
Broadband	Broadband	\$666,514	\$1,425,054	46.77%
General Plant	General Plant	\$734,493	\$1,368,500	53.67%
Information Technology	Information Technology	\$614,165	\$986,750	62.24%
Other	Other	\$4,166		
Security	Security	\$1,210,100	\$2,945,200	41.09%
Grand Total		\$23,765,216	\$31,918,277	74.46%

Select Year

2024

Select Month(s)

- Jan
- Feb
- Mar
- Apr
- May
- Jun
- Jul
- Aug
- Sep
- Oct
- Nov
- Dec
- Budget

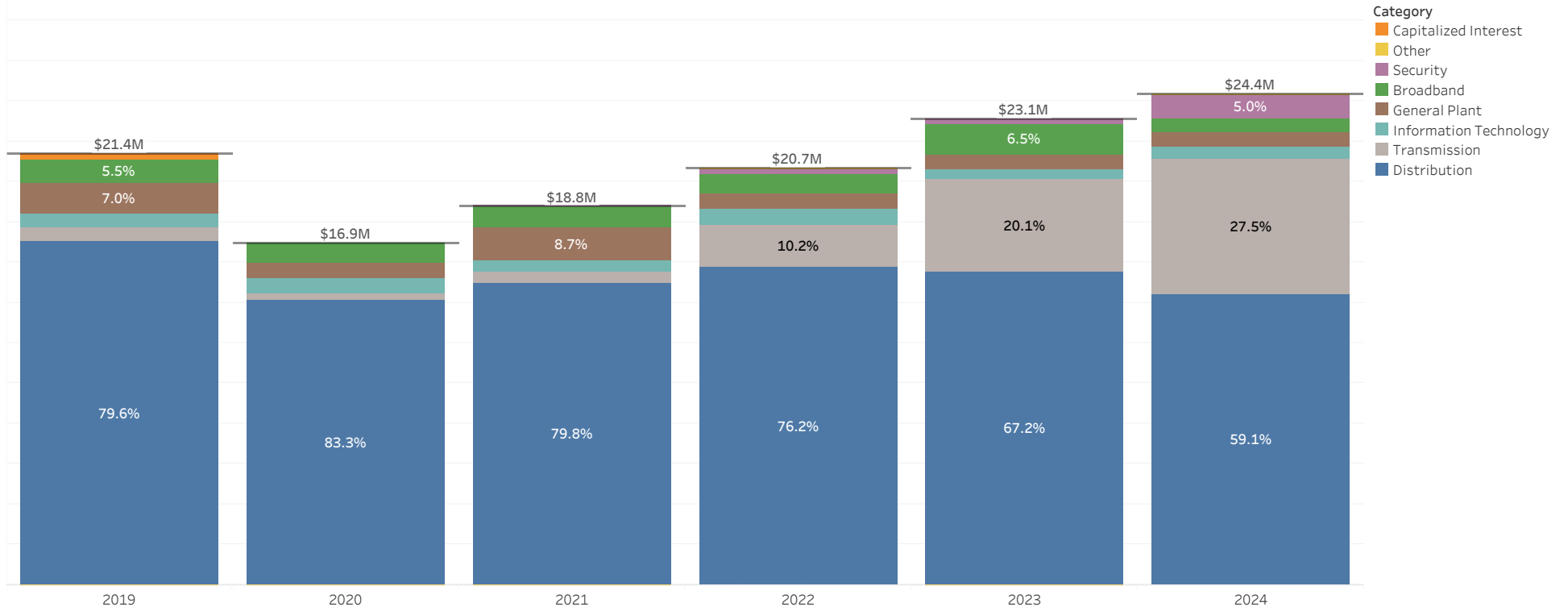
Budget Version

- Actuals
- Amended Budget
- Original Budget

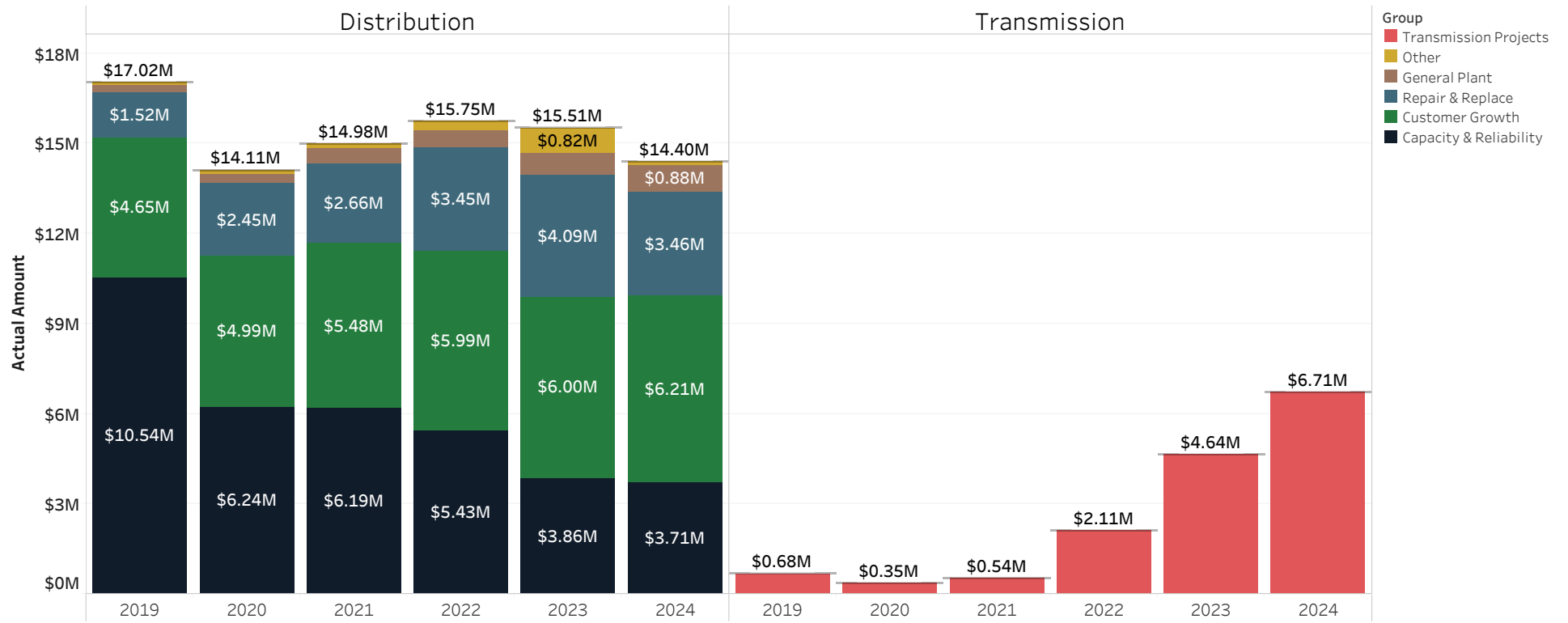
Pension Entry

Financials w/o Pension Entry

Gross Capital Expenditures by Category (Actuals)



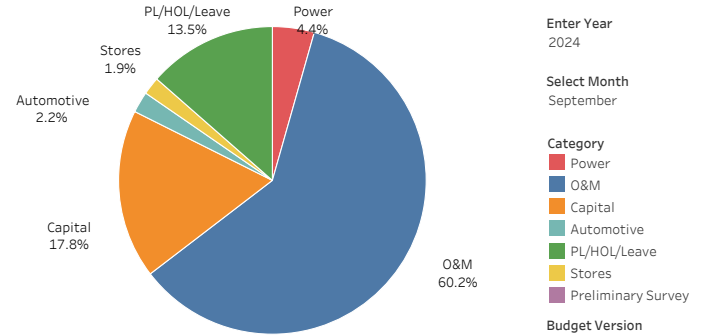
Gross Capital Expenditures by Group (Actuals)



YTD September 2024 Labor by Category: (Activity 11)
Actuals & Original Budget

Category	Current Year Actuals	Current Year Budget	Over / (Under)	Current Year % Variance	Prior Year Actual	Prior Year Variance	Prior Year % Variance
Power	\$540,066	\$559,821	(\$19,756)	(3.5%)	\$563,609	(\$23,543)	(4.2%)
O&M	\$7,542,555	\$7,706,071	(\$163,515)	(2.1%)	\$7,028,114	\$514,441	7.3%
Capital	\$2,625,053	\$2,273,731	\$351,323	15.5%	\$2,163,855	\$461,198	21.3%
Automotive	\$244,968	\$284,428	(\$39,460)	(13.9%)	\$259,260	(\$14,292)	(5.5%)
PL/HOL/Leave	\$1,781,979	\$1,731,774	\$50,205	2.9%	\$1,499,886	\$282,094	18.8%
Stores	\$232,362	\$236,866	(\$4,505)	(1.9%)	\$226,805	\$5,556	2.4%
Preliminary Survey	(\$8,279)		(\$8,279)		\$433	(\$8,712)	(2010.1%)
Grand Total	\$12,960,439	\$12,792,691	\$167,748	1.3%	\$11,741,963	\$1,218,476	10.4%

YTD September 2024 Budget: (Activity 11)



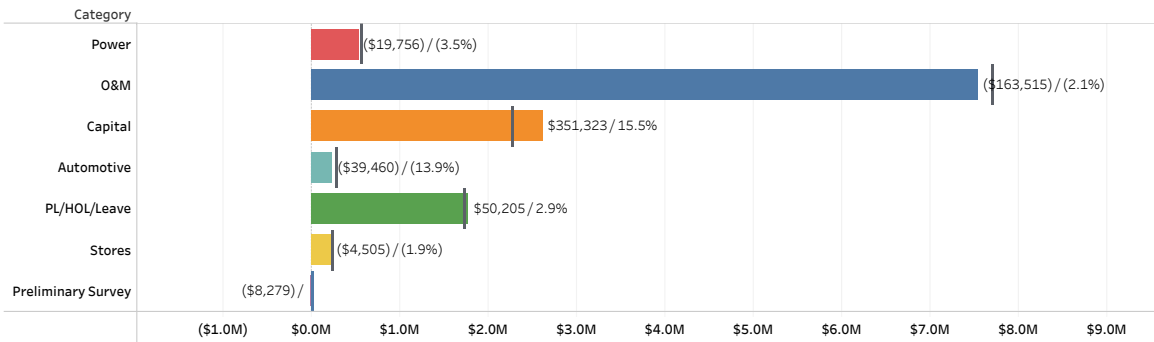
Activity 11
Enter Year 2024
Select Month September

Category
 Power
 O&M
 Capital
 Automotive
 PL/HOL/Leave
 Stores
 Preliminary Survey

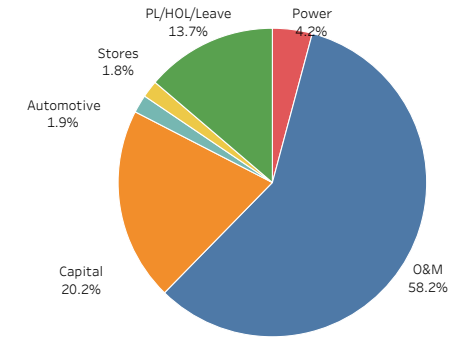
Budget Version
 Actuals
 Amended Budget
 Original Budget

YTD September 2024 Labor by Category: (Activity 11)

(Amount displayed is actuals minus budget / % variance from budget)



YTD September 2024 Actuals: (Activity 11)



Pension Entry
Financials w/o Pension Entry

[Go to the Monthly View](#)

[Monthly Multi-Year Graphs](#)

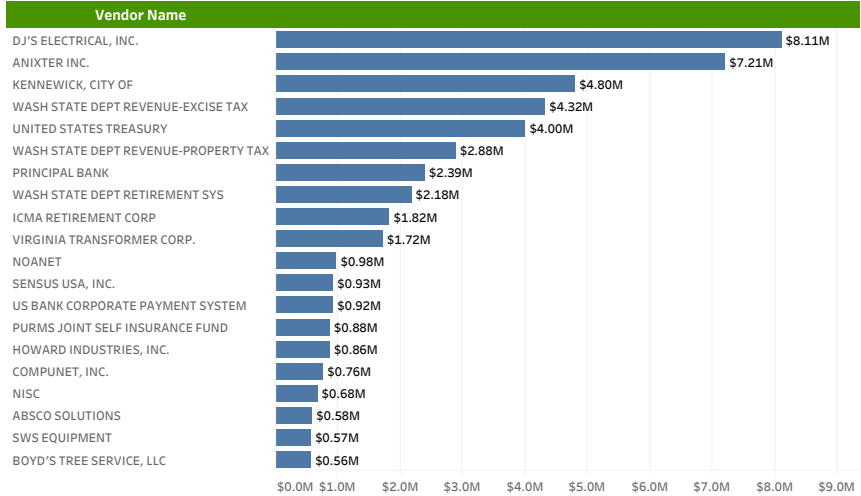
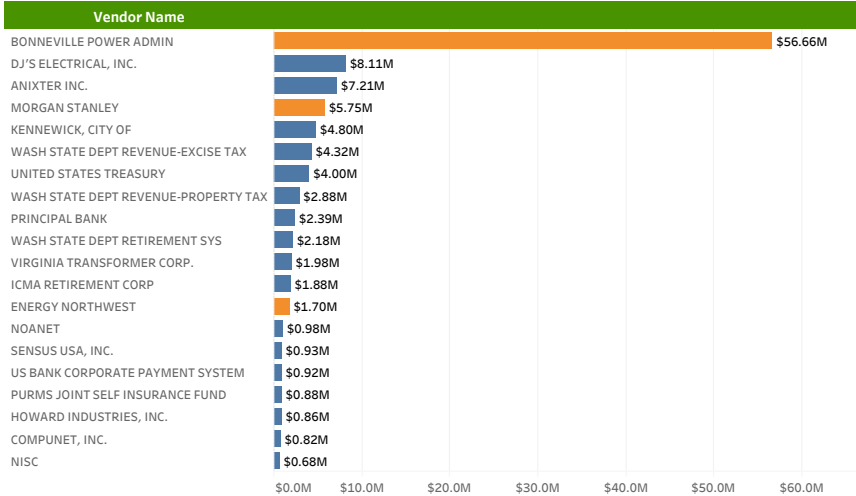
[Cumulative Multi-Year Graphs](#)

District Top 20 Vendors - 2024 YTD
(Including Power Transactions)

District Top 20 Vendors - 2024 YTD
(Excluding Power Transactions)

Year
2024

Top N Vendor
20



Revenue Class Hourly Demand

By Year for Revenue Class: All in Month: October

Select filters: Year All Month October

Billed Revenue Class

- In
- Out

Revenue Class

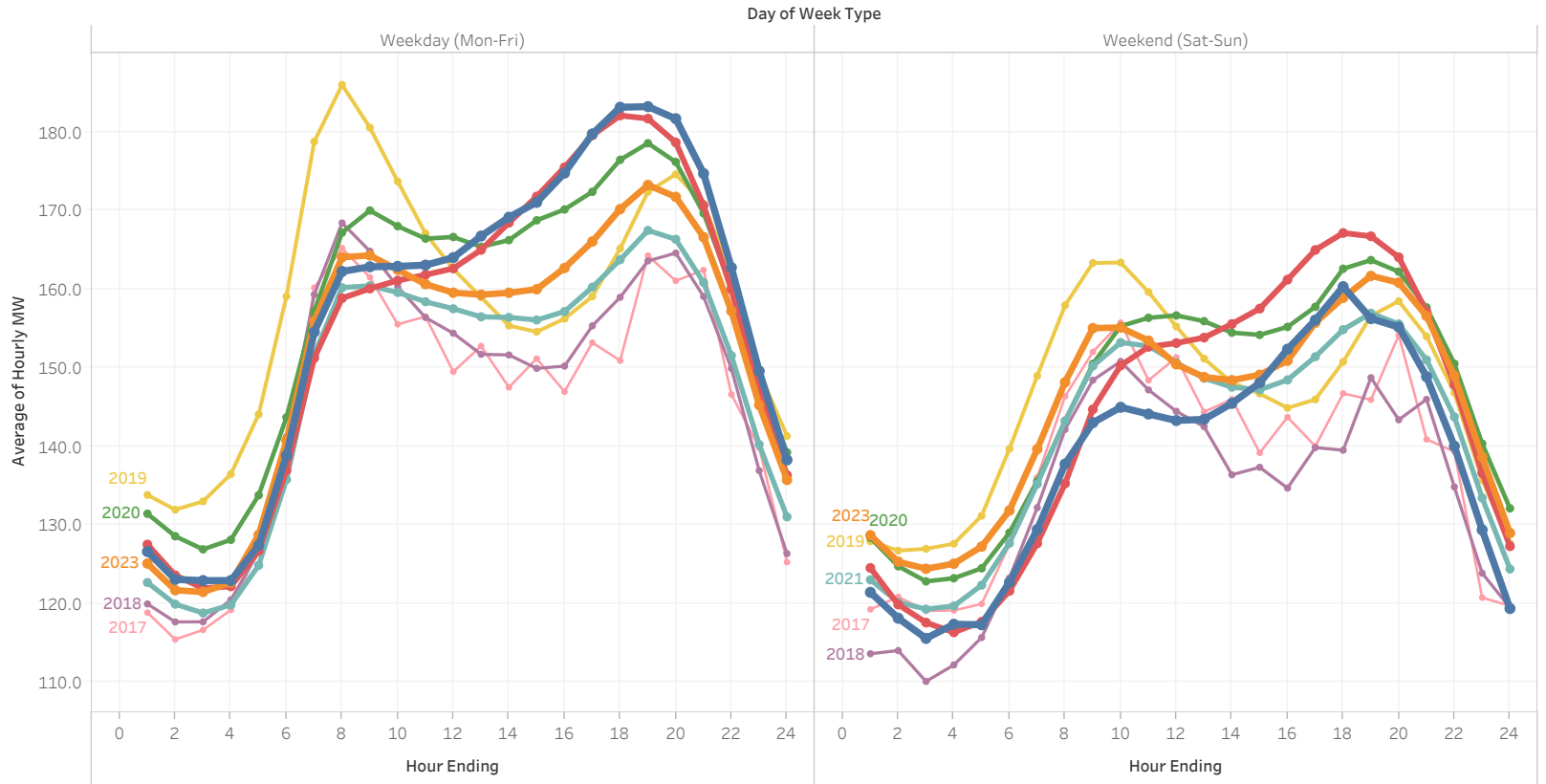
- Residential
- Small General
- Medium General
- Large General
- Large Industrial
- Large Irrigation
- Small Irrigation

Year of Date

- 2024
- 2023
- 2022
- 2021
- 2020
- 2019
- 2018
- 2017

AMI data updated through:

Tue, October 15, 2024



Revenue Class Hourly Demand

By Year for Revenue Class: **Residential** in Month: **October**

Select filters: Year All Month October

Billed Revenue Class

- In
- Out

Revenue Class

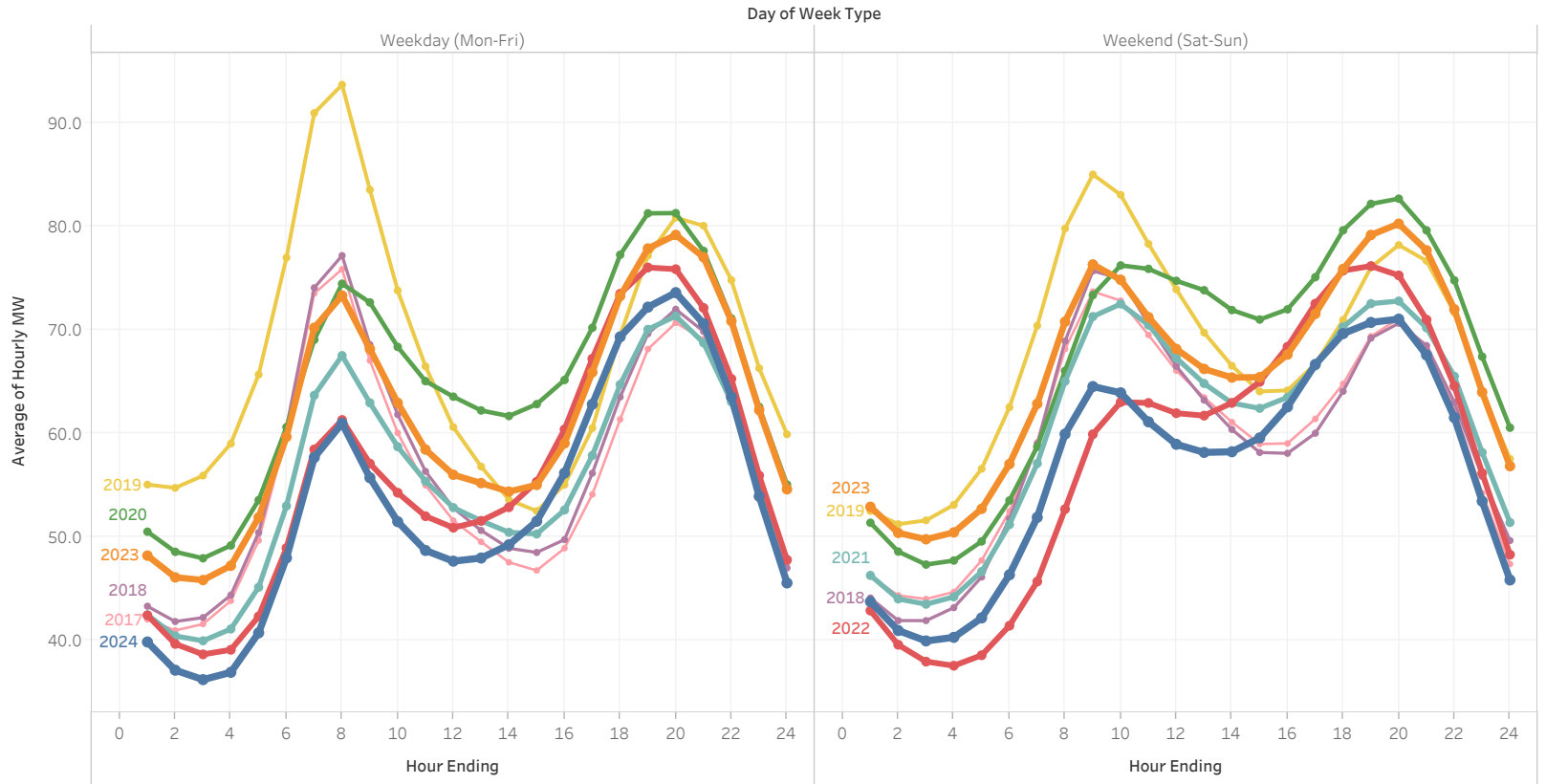
- Residential
- Small General
- Medium General
- Large General
- Large Industrial
- Large Irrigation
- Small Irrigation

Year of Date

- 2024
- 2023
- 2022
- 2021
- 2020
- 2020
- 2019
- 2018
- 2018
- 2017

AMI data updated through:

Tue, October 15, 2024



Revenue Class Hourly Demand

By Year for Revenue Class: **Small General, Medium General, Large General** in Month: **October**

Select filters: Year: All Month: October

Billed Revenue Class

- In
- Out

Revenue Class

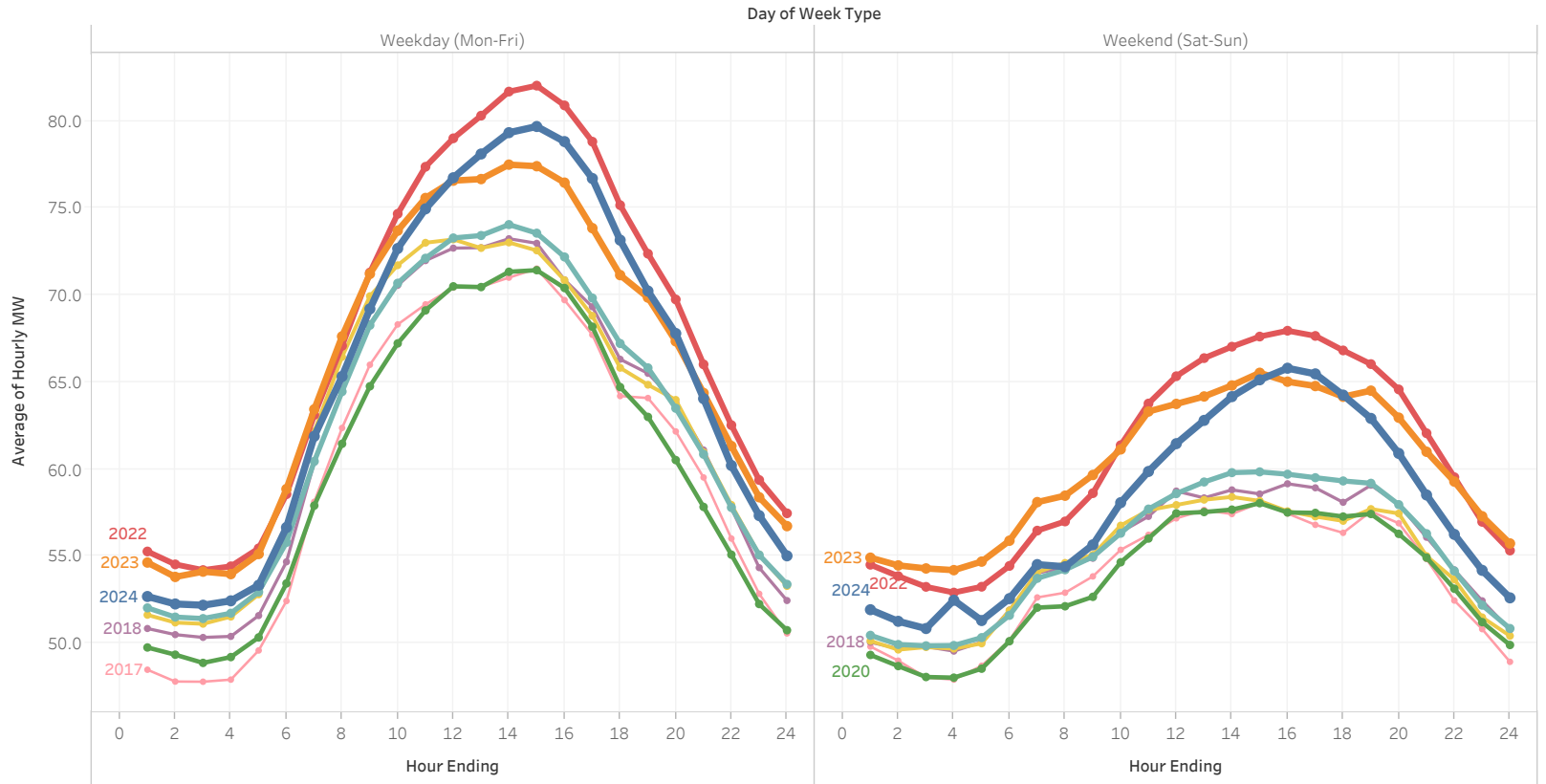
- Residential
- Small General
- Medium General
- Large General
- Large Industrial
- Large Irrigation
- Small Irrigation

Year of Date

- 2024
- 2023
- 2022
- 2021
- 2020
- 2019
- 2018
- 2017

AMI data updated through:

Tue, October 15, 2024



Revenue Class Hourly Demand

By Year for Revenue Class: **Large Irrigation** in Month: **October**

Select filters: Year All Month October

Billed Revenue Class

- In
- Out

Revenue Class

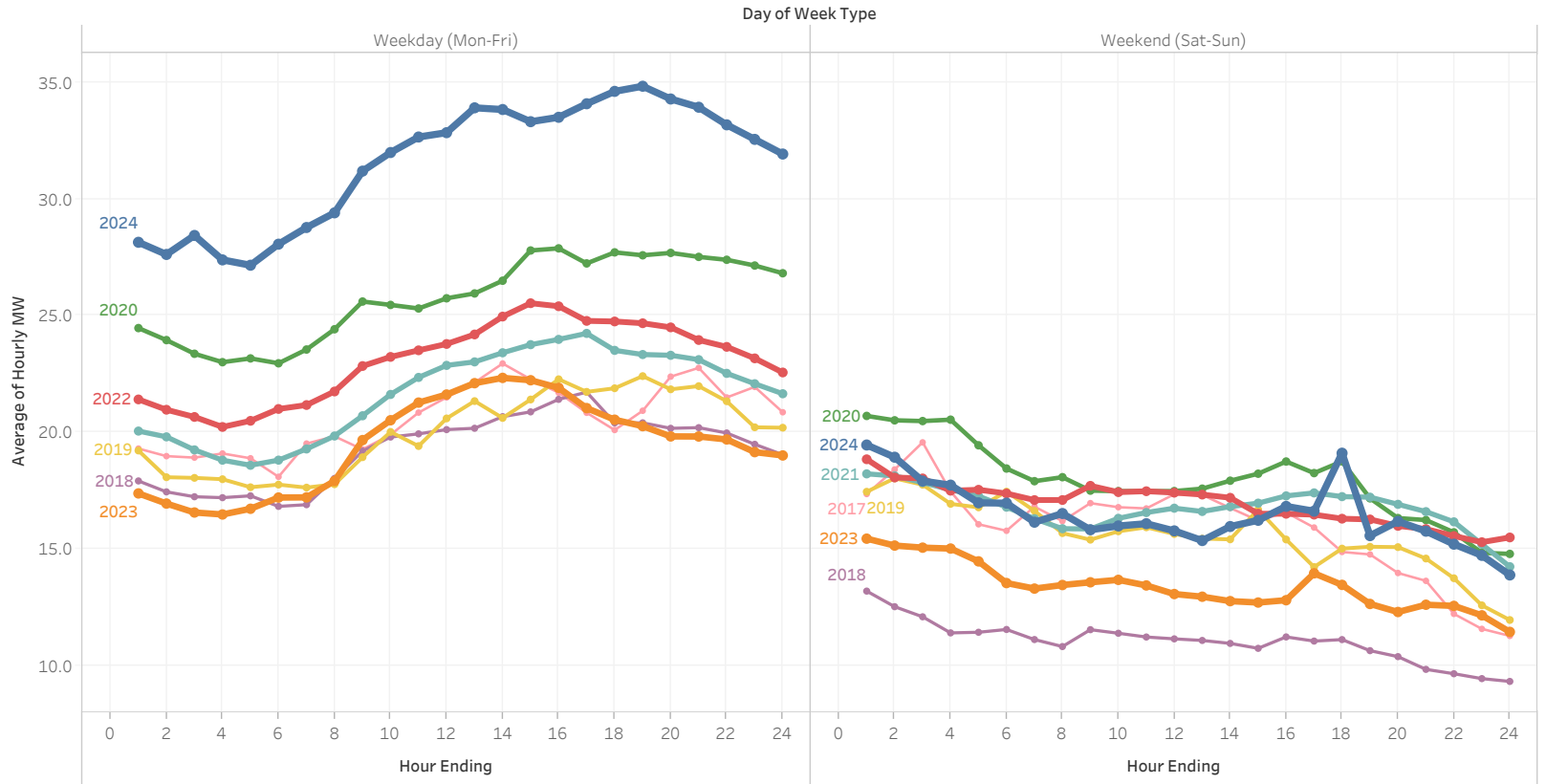
- Residential
- Small General
- Medium General
- Large General
- Large Industrial
- Large Irrigation
- Small Irrigation

Year of Date

- 2024
- 2023
- 2022
- 2021
- 2020
- 2019
- 2018
- 2017

AMI data updated through:

Tue, October 15, 2024



Revenue Class Cumulative Energy

By Year for Revenue Class: All in Month: October

Select filters:

Year
All

Month
October

Month-Day
Multiple values

Billed Revenue Class

- In
- Out

Revenue Class

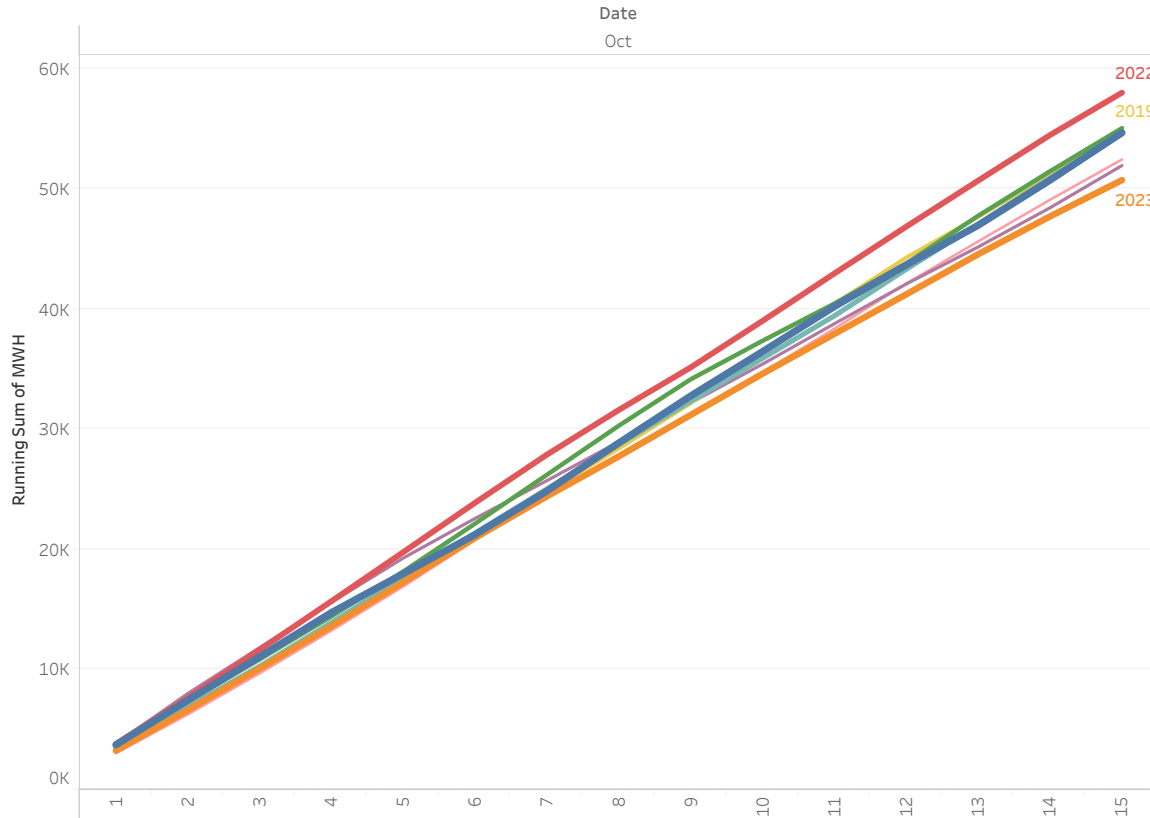
- Residential
- Small General
- Medium General
- Large General
- Large Industrial
- Large Irrigation
- Small Irrigation

Year of Date

- 2024
- 2023
- 2022
- 2021
- 2020
- 2019
- 2018
- 2017

AMI data updated through:

Tue, October 15, 2024



Year Over Year Summary:
(hover to highlight year)

Year of Date	MWH	MWH Difference	% Difference
2017	52,443		
2018	51,937	-506	-0.96%
2019	55,020	3,082	5.94%
2020	55,047	27	0.05%
2021	54,585	-462	-0.84%
2022	58,001	3,416	6.26%
2023	50,726	-7,275	-12.54%
2024	54,664	3,938	7.76%

Note:
Totals do not include
non-AMI meter readings.

Revenue Class Cumulative Energy

By Year for Revenue Class: **Residential** in Month: **October**

Select filters: Year All Month October Month-Day Multiple values

Billed Revenue Class

- In
- Out

Revenue Class

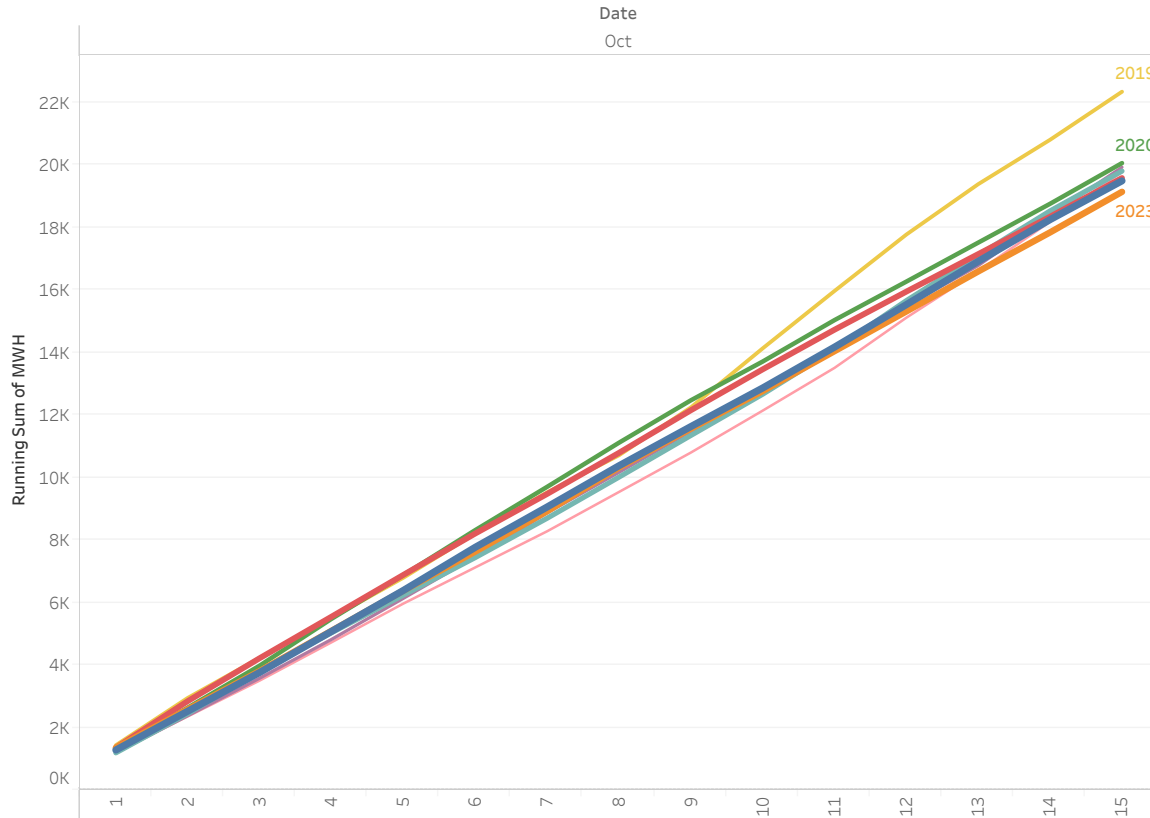
- Residential
- Small General
- Medium General
- Large General
- Large Industrial
- Large Irrigation
- Small Irrigation

Year of Date

- 2024
- 2023
- 2022
- 2021
- 2020
- 2019
- 2018
- 2017

AMI data updated through:

Tue, October 15, 2024



Year Over Year Summary:
(hover to highlight year)

Year of Date	MWH	MWH Difference	% Difference
2017	19,782		
2018	19,933	151	0.76%
2019	22,350	2,417	12.13%
2020	20,065	-2,285	-10.22%
2021	19,808	-256	-1.28%
2022	19,587	-221	-1.12%
2023	19,145	-442	-2.26%
2024	19,497	352	1.84%

Note:
Totals do not include non-AMI meter readings.

Revenue Class Cumulative Energy

By Year for Revenue Class: **Small General, Medium General, Large General** in Month: **October**

Select filters:

Year
All

Month
October

Month-Day
Multiple values

Billed Revenue Class

- In
- Out

Revenue Class

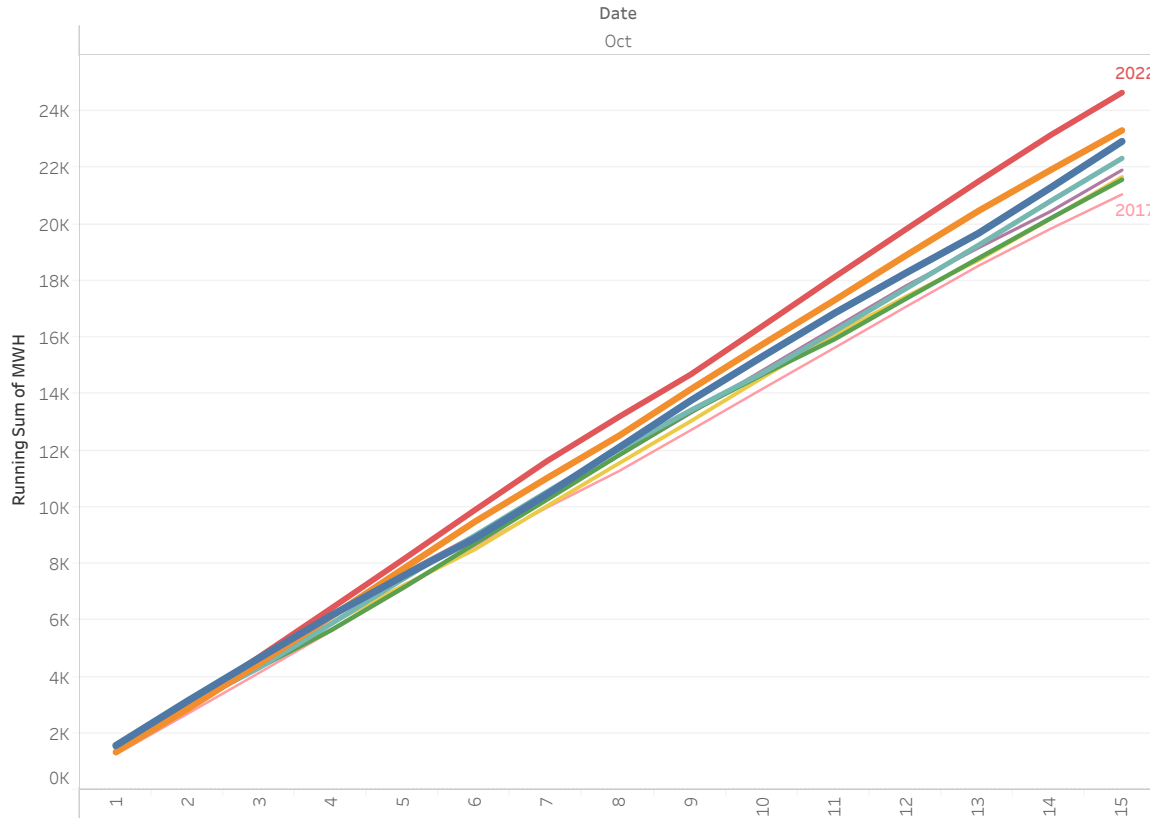
- Residential
- Small General
- Medium General
- Large General
- Large Industrial
- Large Irrigation
- Small Irrigation

Year of Date

- 2024
- 2023
- 2022
- 2021
- 2020
- 2019
- 2018
- 2017

AMI data updated through:

Tue, October 15, 2024



Year Over Year Summary:
(hover to highlight year)

Year of Date	MWH	MWH Difference	% Difference
2017	21,063		
2018	21,922	859	4.08%
2019	21,680	-242	-1.11%
2020	21,583	-97	-0.45%
2021	22,339	757	3.51%
2022	24,662	2,323	10.40%
2023	23,327	-1,335	-5.41%
2024	22,937	-390	-1.67%

Note:
Totals do not include non-AMI meter readings.

Revenue Class Cumulative Energy

By Year for Revenue Class: **Large Irrigation** in Month: **October**

Select filters:

Year: All
 Month: October
 Month-Day: Multiple values

Billed Revenue Class

- In
- Out

Revenue Class

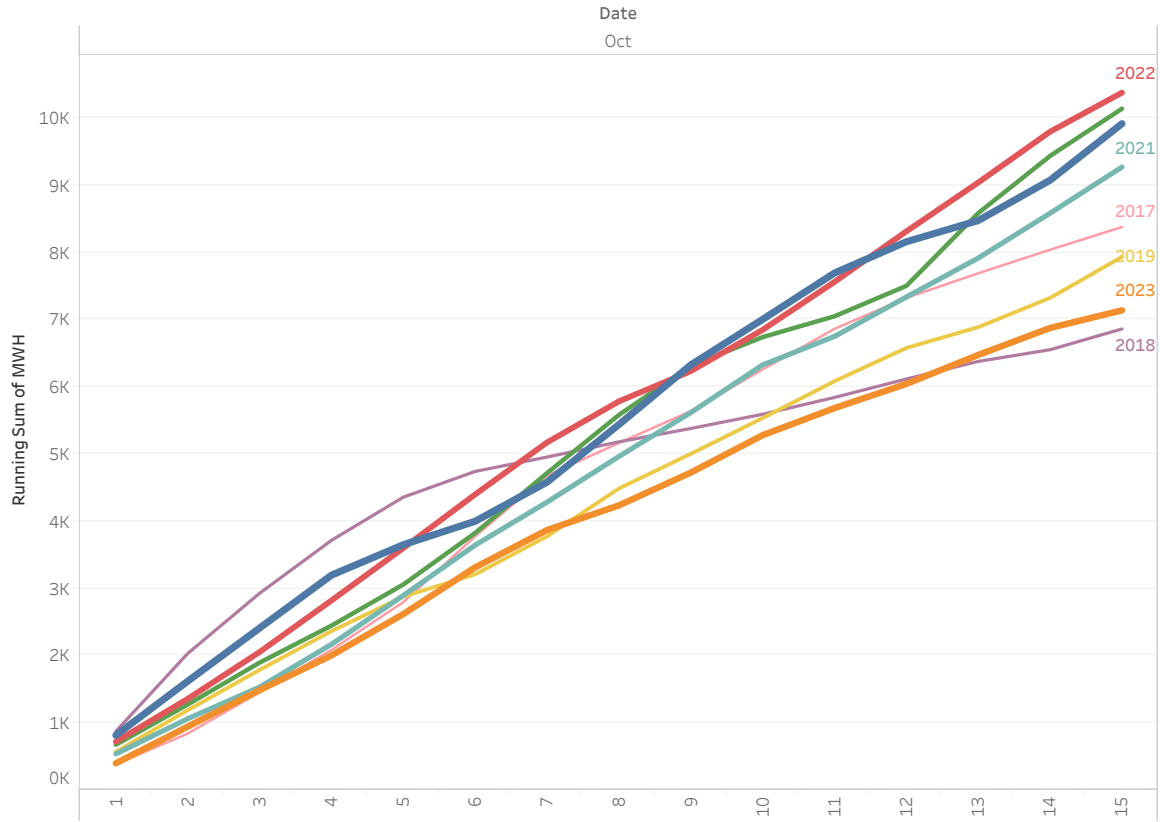
- Residential
- Small General
- Medium General
- Large General
- Large Industrial
- Large Irrigation
- Small Irrigation

Year of Date

- 2024
- 2023
- 2022
- 2021
- 2020
- 2019
- 2018
- 2017

AMI data updated through:

Tue, October 15, 2024



Year Over Year Summary:
 (hover to highlight year)

Year of Date	MWH	MWH Difference	% Difference
2017	8,380		
2018	6,863	-1,518	-18.11%
2019	7,935	1,073	15.63%
2020	10,141	2,206	27.80%
2021	9,272	-868	-8.56%
2022	10,380	1,107	11.94%
2023	7,140	-3,240	-31.22%
2024	9,919	2,779	38.93%

Note:
 Totals do not include non-AMI meter readings.
 No AMI readings for the pump decks at Spaw, Paterson #1 & #2 and Prior #1 Bay 1 & 2.

Past Due AR in Dollars for Selected Revenue Classes:

All

Balance Aging: [30 Days](#) | [60 Days](#) | [90+ Days](#)

Consumer Class Selection:

Regular

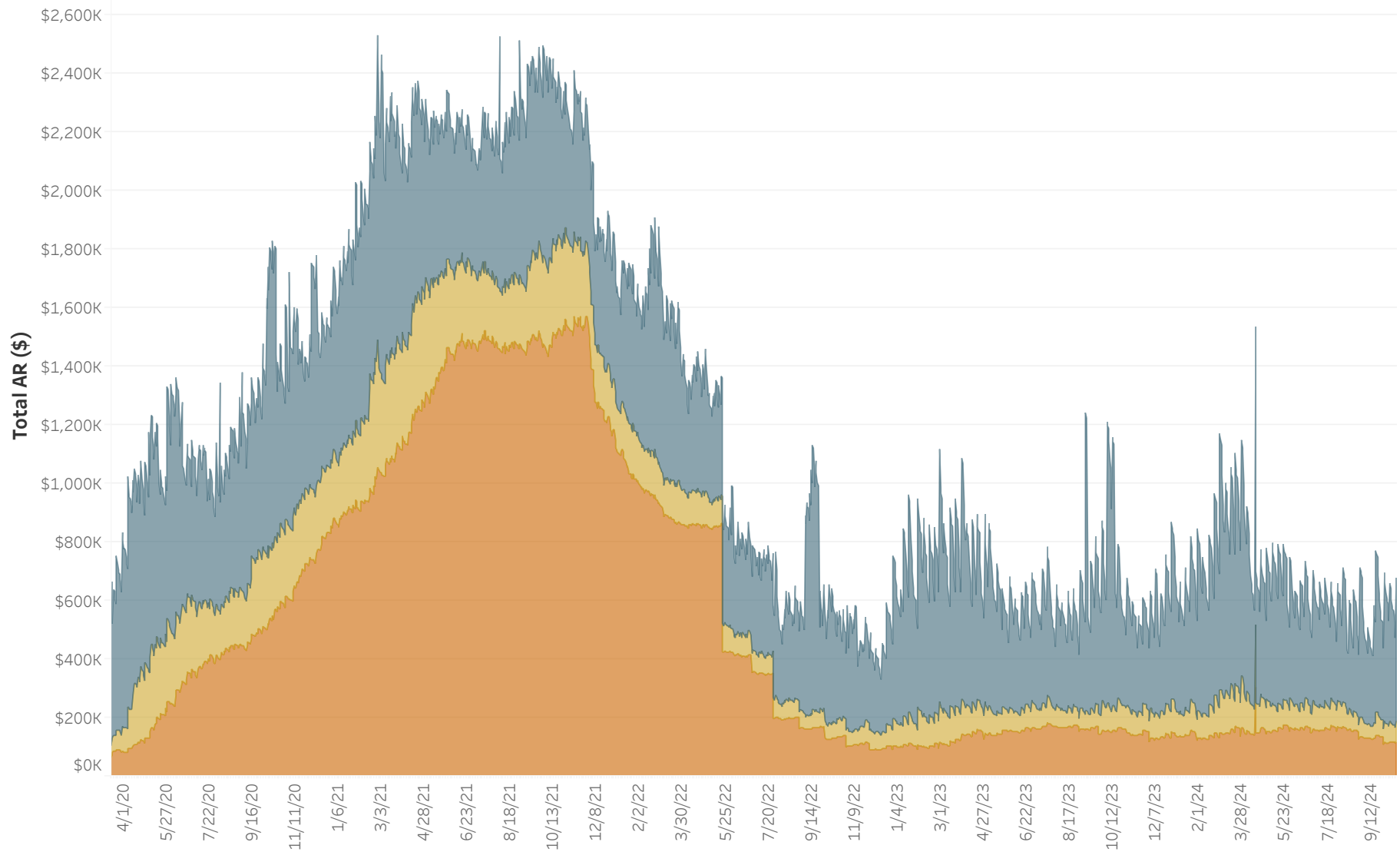
Revenue Class Selection:

All

Service Status:

All

	Accounts	Dollars
30 Days	3,437	\$487,133
60 Days	722	\$70,797
90+ Days	702	\$117,403
Past Due	4,861	\$675,333
Total AR	53,379	\$6,760,208



AR data as of 10/16/2024. Data source is AR Balance History Tableau report view.

Past Due AR in Dollars for Selected Revenue Classes:

All

Balance Aging: [30 Days](#) | [60 Days](#) | [90+ Days](#)

Consumer Class Selection:

Regular

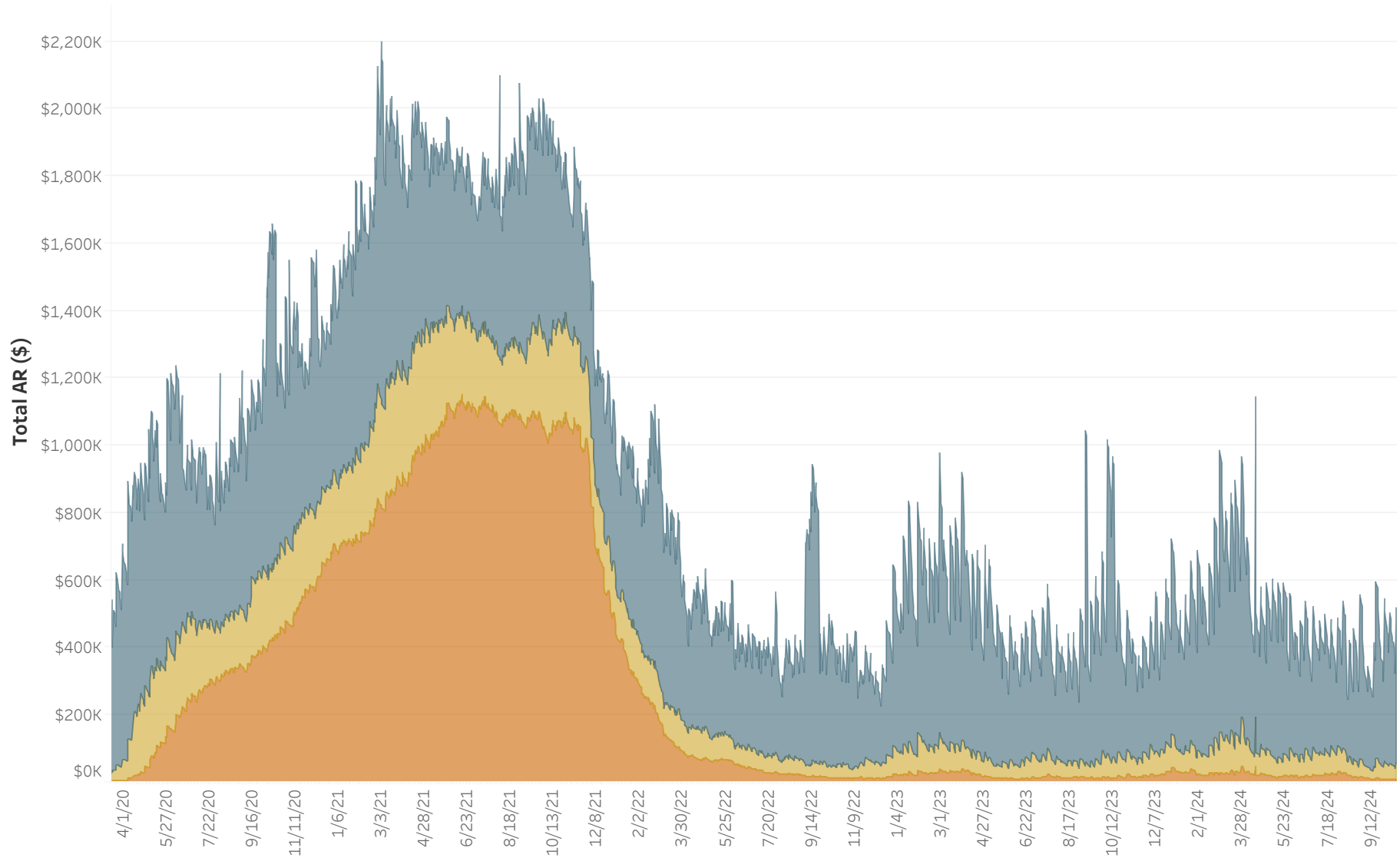
Revenue Class Selection:

All

Service Status:

Active

	Accounts	Dollars
30 Days	3,263	\$462,638
60 Days	592	\$48,154
90+ Days	139	\$7,979
Past Due	3,994	\$518,771
Total AR	51,551	\$6,589,195



AR data as of 10/16/2024. Data source is AR Balance History Tableau report view.

Past Due AR in Dollars for Selected Revenue Classes:

Residential

Balance Aging: [30 Days](#) | [60 Days](#) | [90+ Days](#)

Consumer Class Selection:

Regular

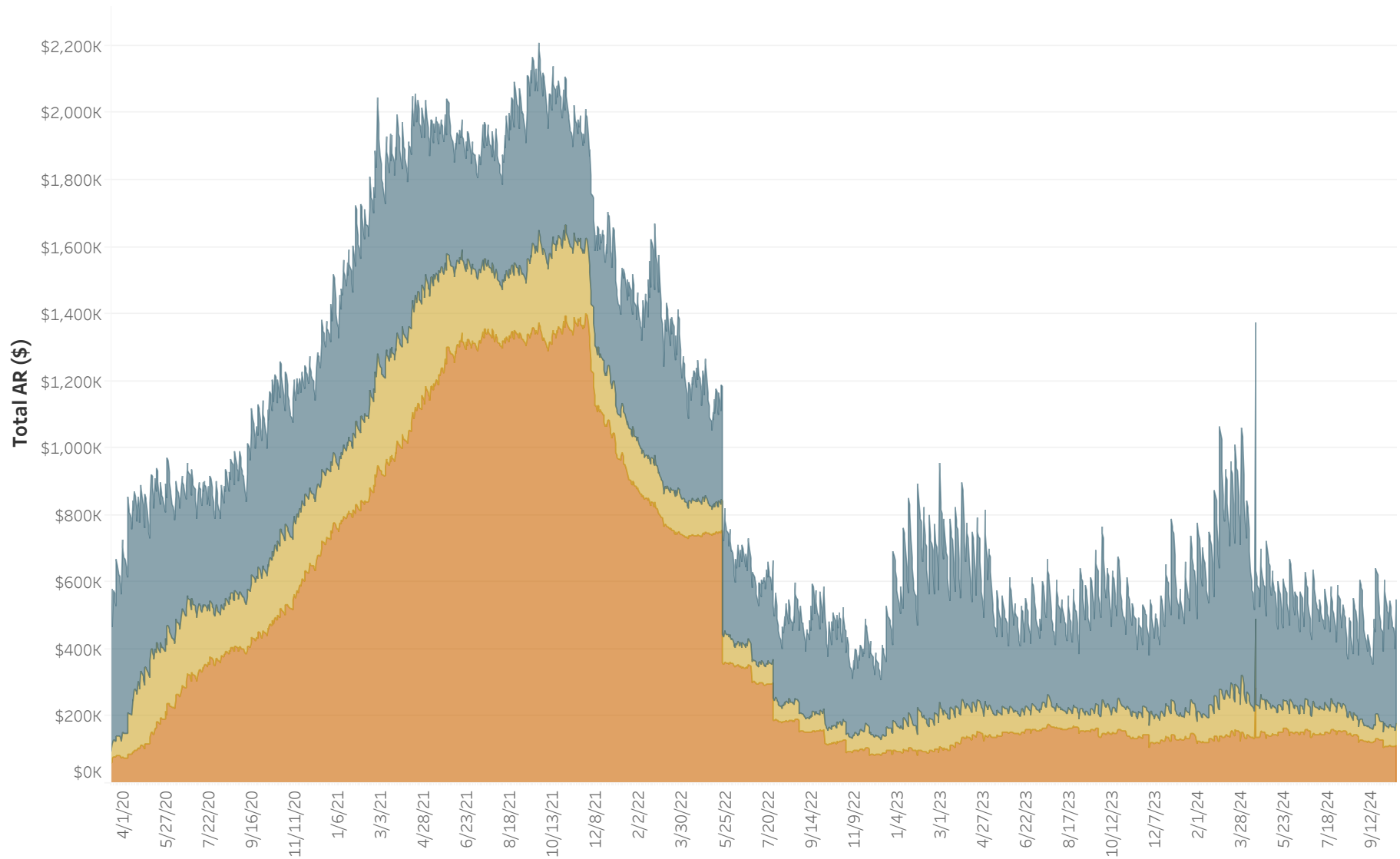
Revenue Class Selection:

Residential

Service Status:

All

	Accounts	Dollars
30 Days	2,995	\$367,311
60 Days	644	\$65,426
90+ Days	659	\$113,147
Past Due	4,298	\$545,885
Total AR	44,275	\$2,259,667



AR data as of 10/16/2024. Data source is AR Balance History Tableau report view.

Past Due AR in Dollars for Selected Revenue Classes:

Residential

Balance Aging: **30 Days** | **60 Days** | **90+ Days**

Consumer Class Selection:

Regular

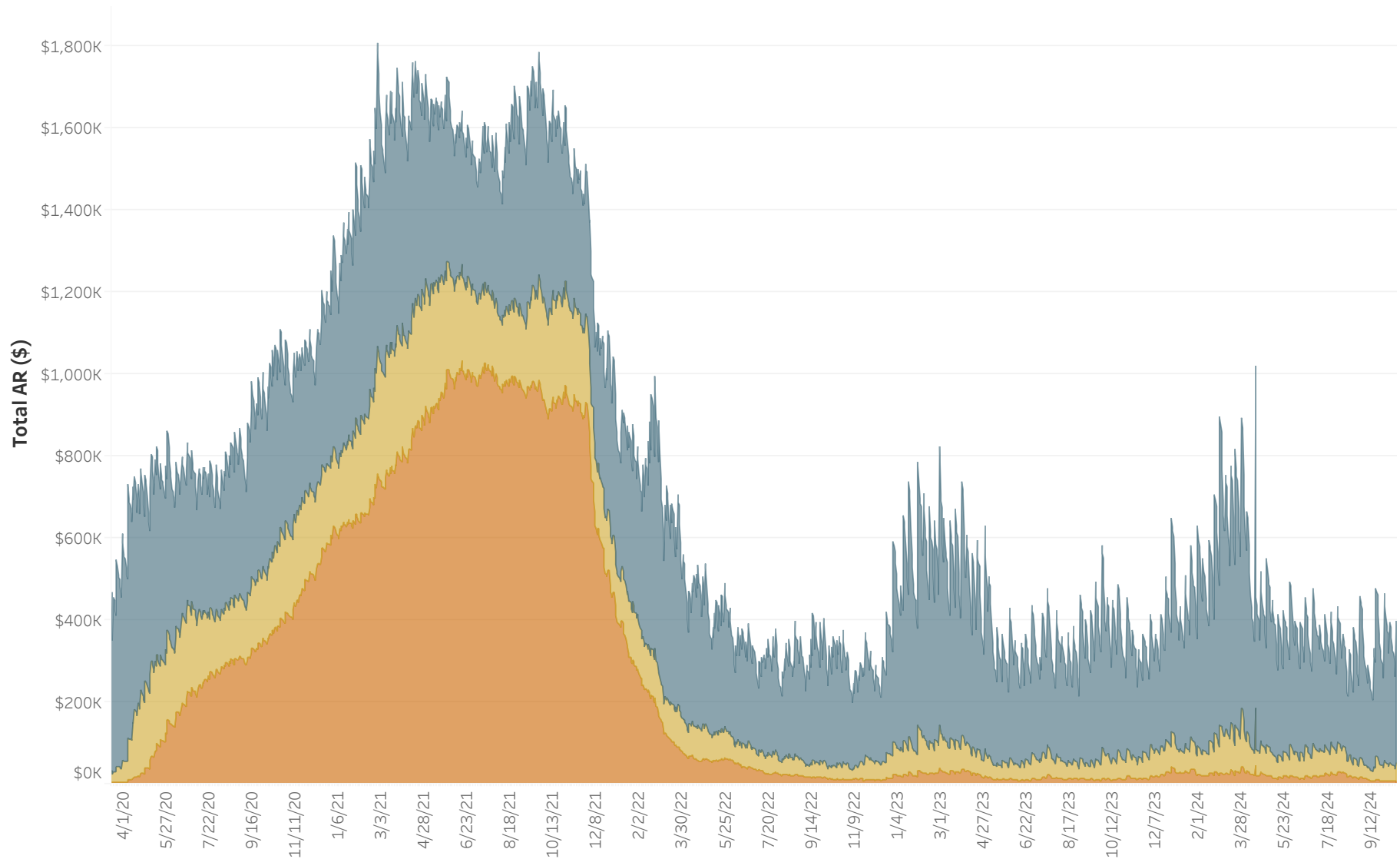
Revenue Class Selection:

Residential

Service Status:

Active

	Accounts	Dollars
30 Days	2,829	\$346,054
60 Days	528	\$45,002
90+ Days	108	\$6,490
Past Due	3,465	\$397,546
Total AR	42,534	\$2,100,562



AR data as of 10/16/2024. Data source is AR Balance History Tableau report view.

Past Due AR in Dollars for Selected Revenue Classes:

Residential

Balance Aging: [30 Days](#) | [60 Days](#) | [90+ Days](#)

Consumer Class Selection:

Regular

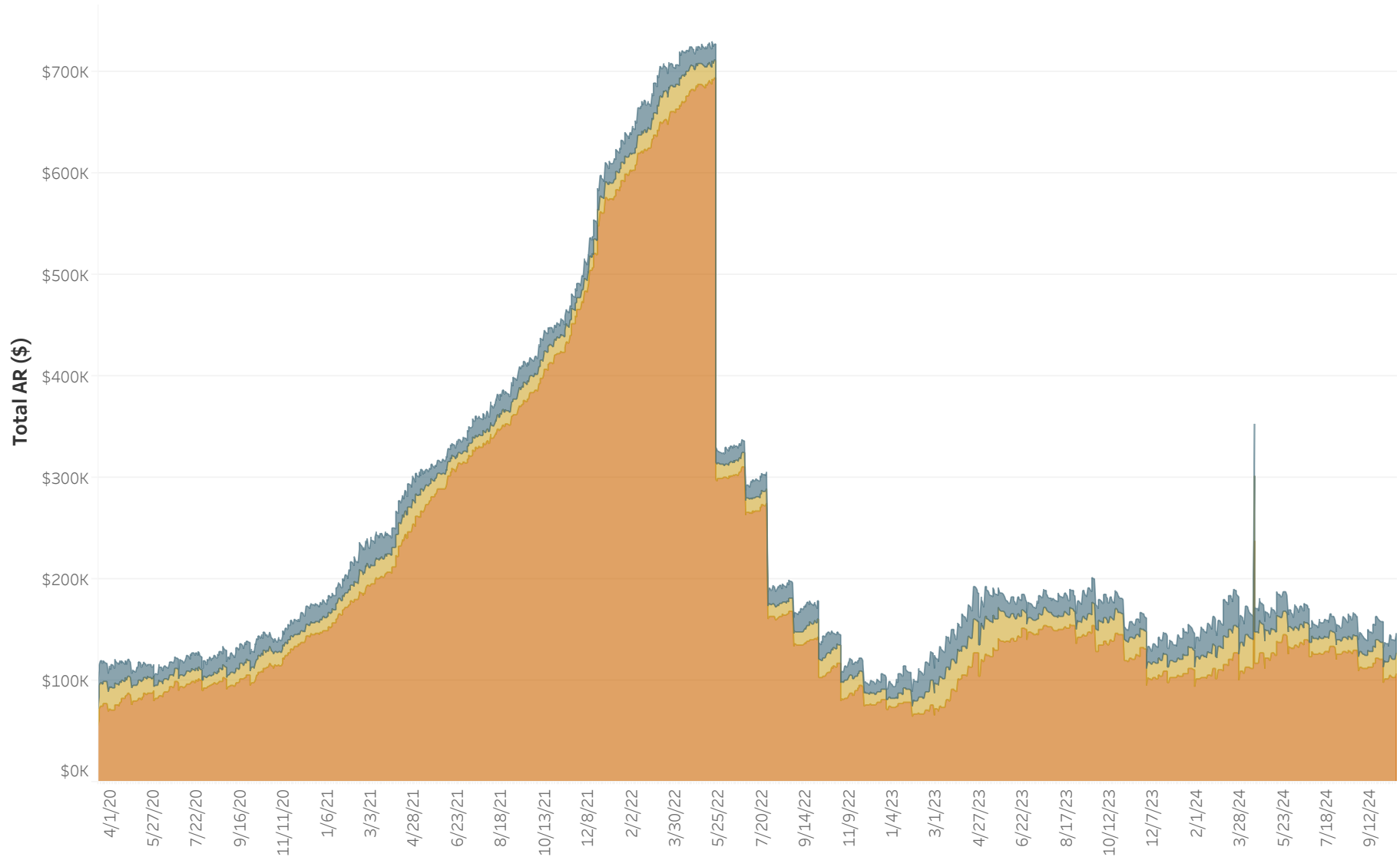
Revenue Class Selection:

Residential

Service Status:

Inactive

	Accounts	Dollars
30 Days	153	\$19,749
60 Days	112	\$20,065
90+ Days	549	\$106,376
Past Due	814	\$146,190
Total AR	1,494	\$156,836



AR data as of 10/16/2024. Data source is AR Balance History Tableau report view.