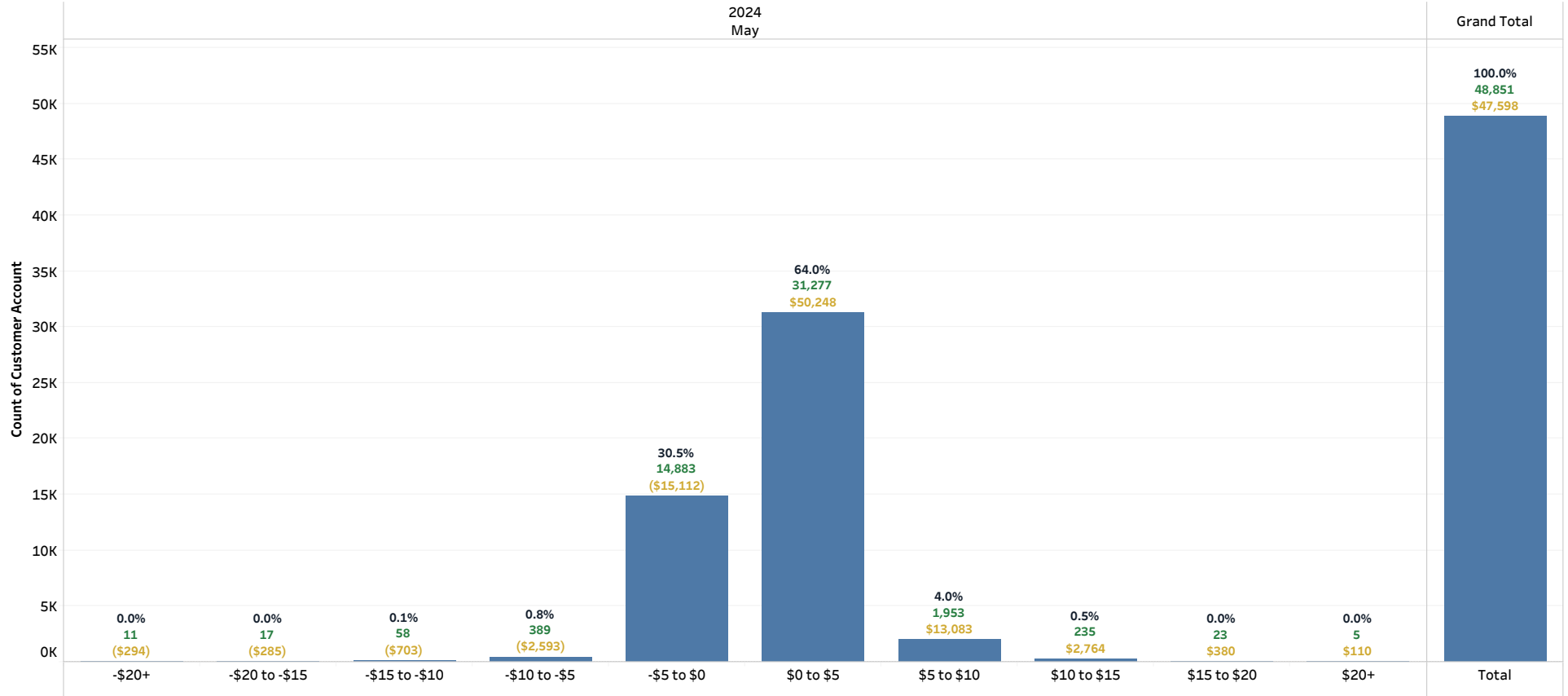


# Residential Demand Billing Impact Analysis by Customer Account (Includes Discounts) Billing Date: All

(Note: The analysis shown is aggregated to the customer account and a customer can have multiple accounts.)

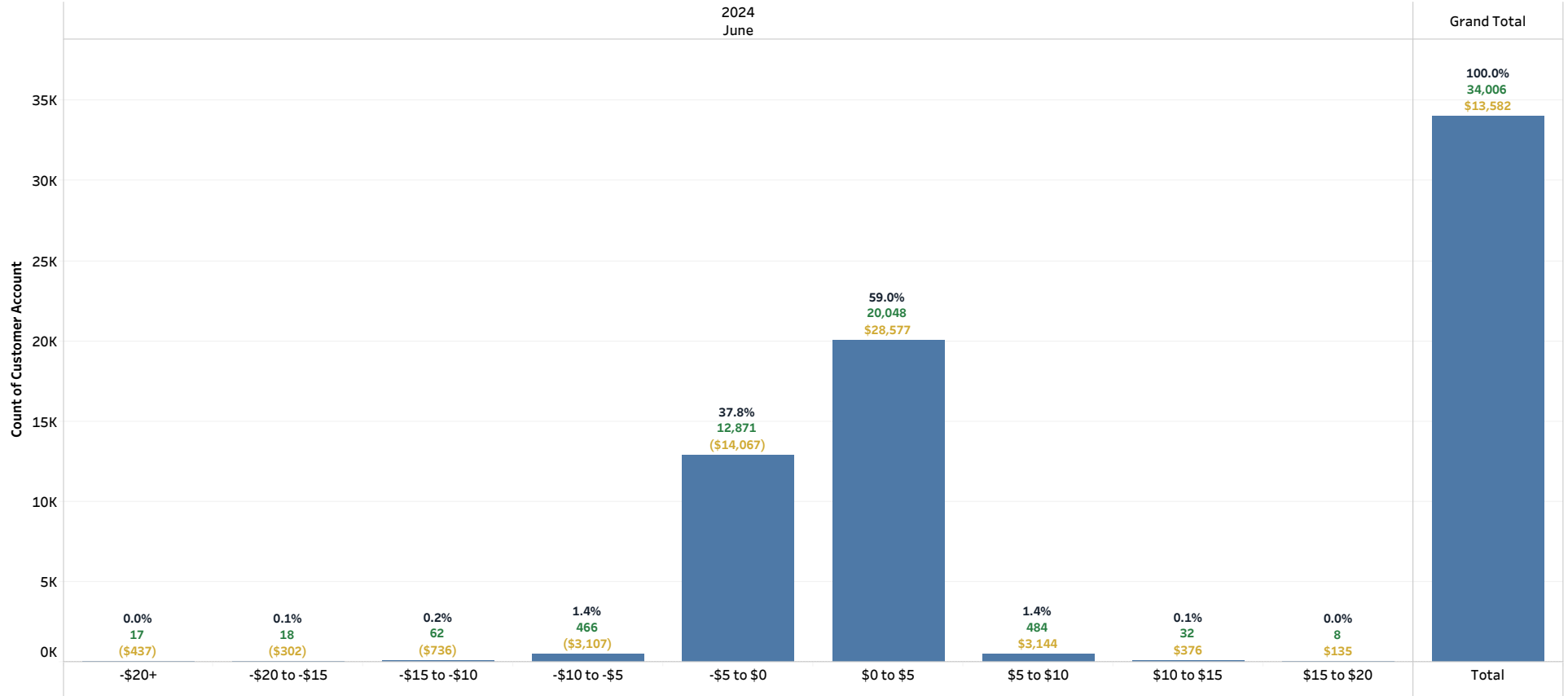
(% of Total Accounts | # of Accounts | Total Net Impact)



# Residential Demand Billing Impact Analysis by Customer Account (Includes Discounts) Billing Date: All

(Note: The analysis shown is aggregated to the customer account and a customer can have multiple accounts.)

(% of Total Accounts | # of Accounts | Total Net Impact)



Cumulative Retail Revenue Budget vs Actuals (Original Budget Only): All

Rate Class

All

Filter Date Year

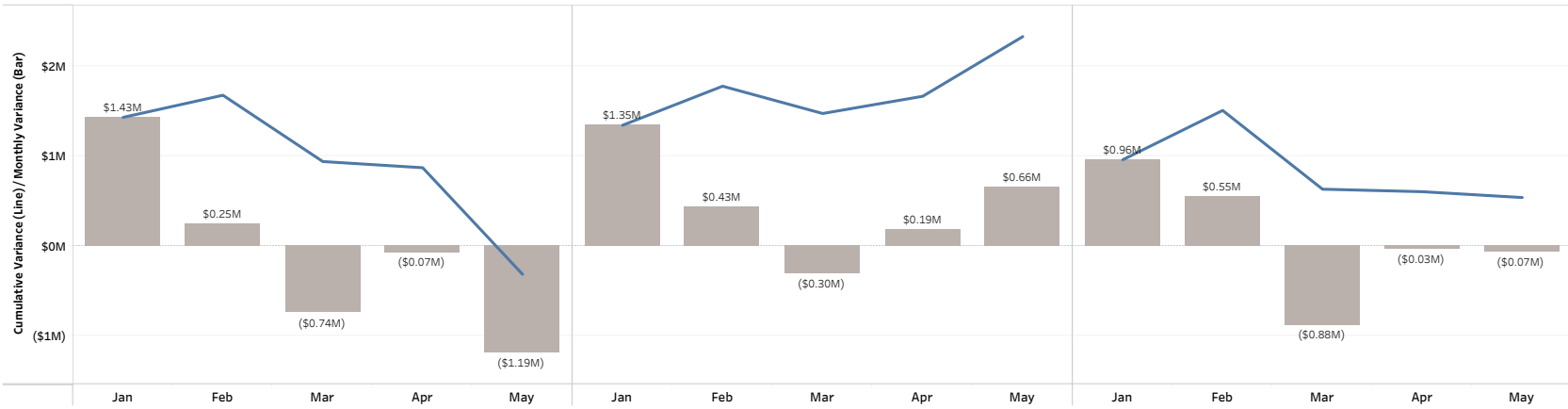
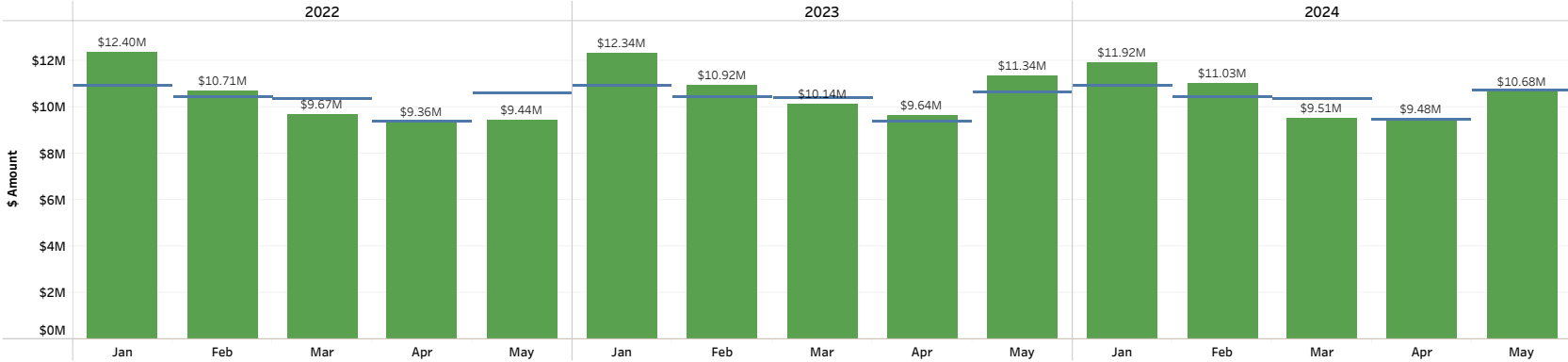
Multiple values

Filter Date Month

Multiple values

Legend

- Budget
- Budget (No COVID Adj)
- Actual
- Cumulative Variance (No COVID ..
- Cumulative Variance (Original)
- Month Over / (Under)



Cumulative Retail Revenue Budget vs Actuals (Original Budget Only): Residential Sales

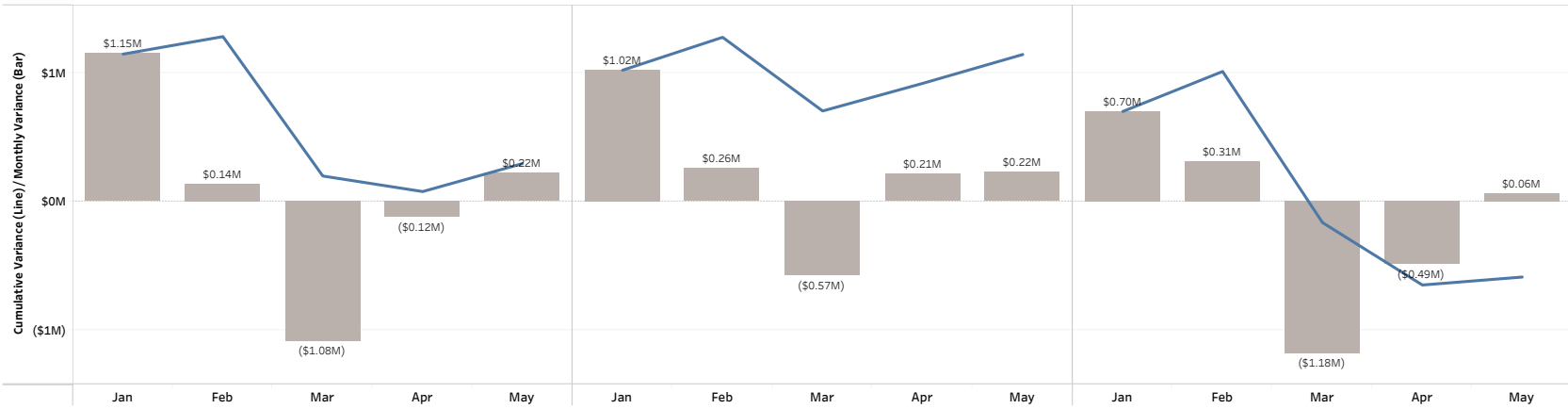
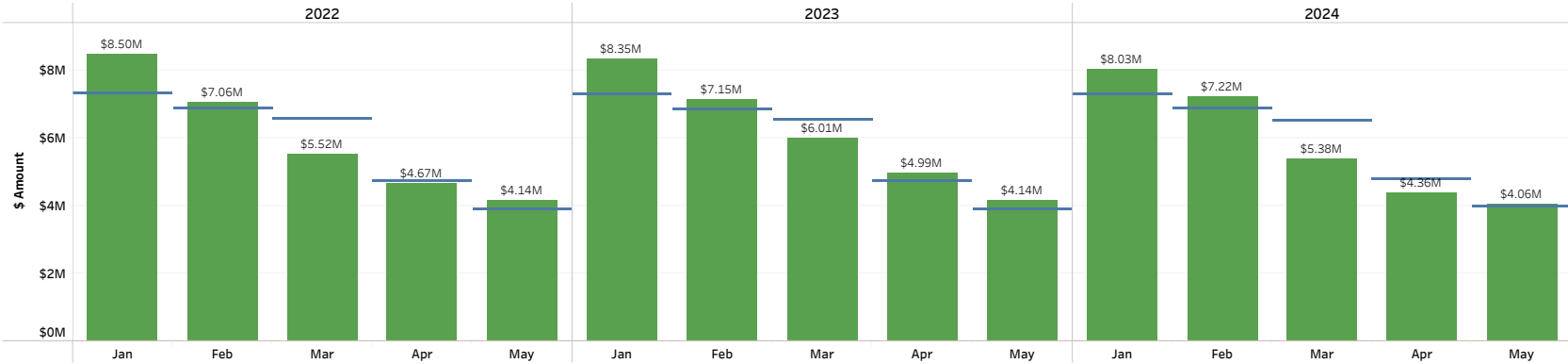
Rate Class  
Residential Sales

Filter Date Year  
Multiple values

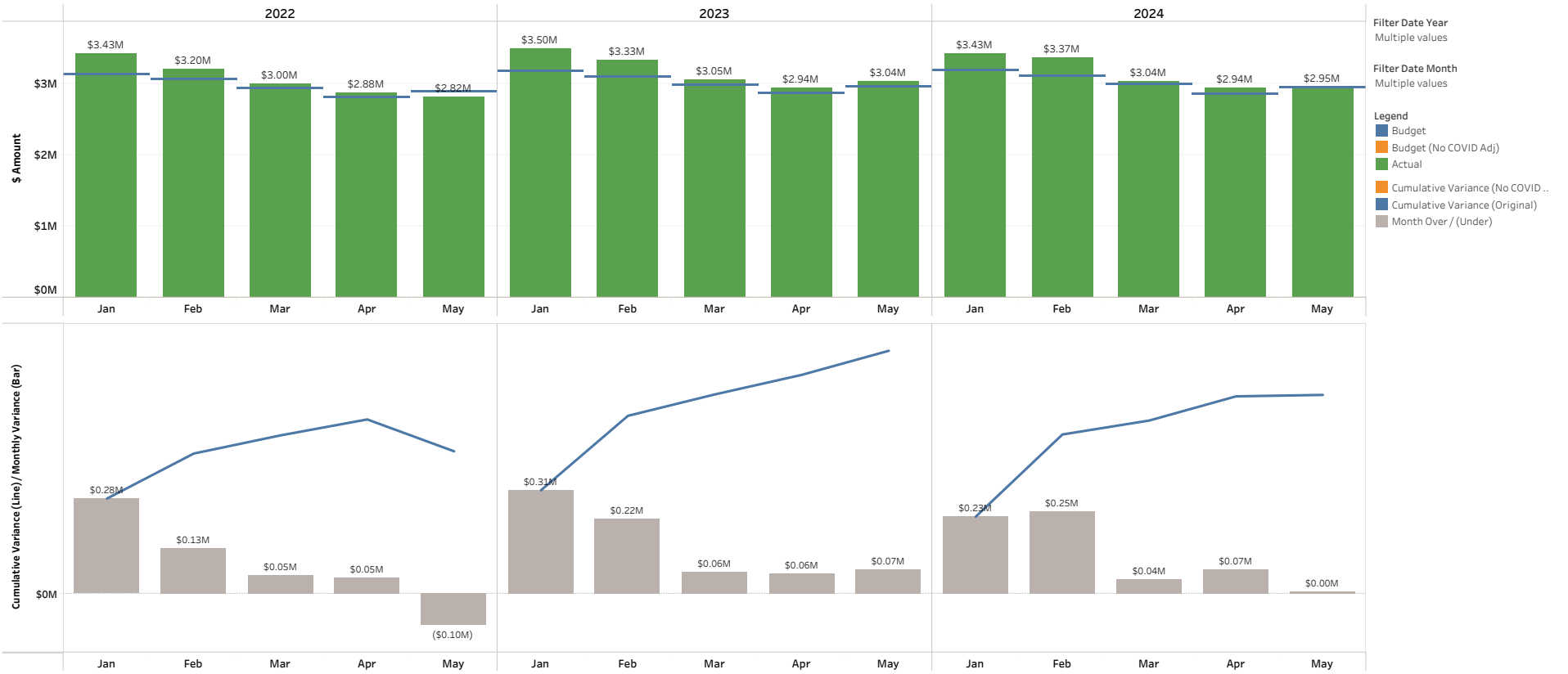
Filter Date Month  
Multiple values

Legend

- Budget
- Budget (No COVID Adj)
- Actual
- Cumulative Variance (No COVID ..
- Cumulative Variance (Original)
- Month Over / (Under)



Cumulative Retail Revenue Budget vs Actuals (Original Budget Only): [Large General Service Sales](#), [Medium General Service Sales](#), [Small General Service Sales](#)



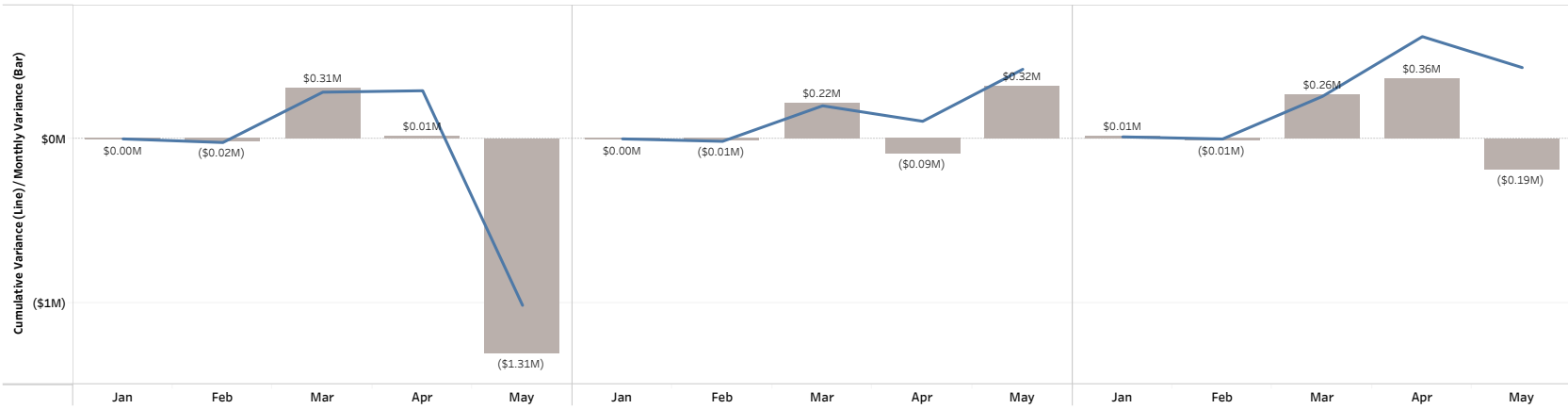
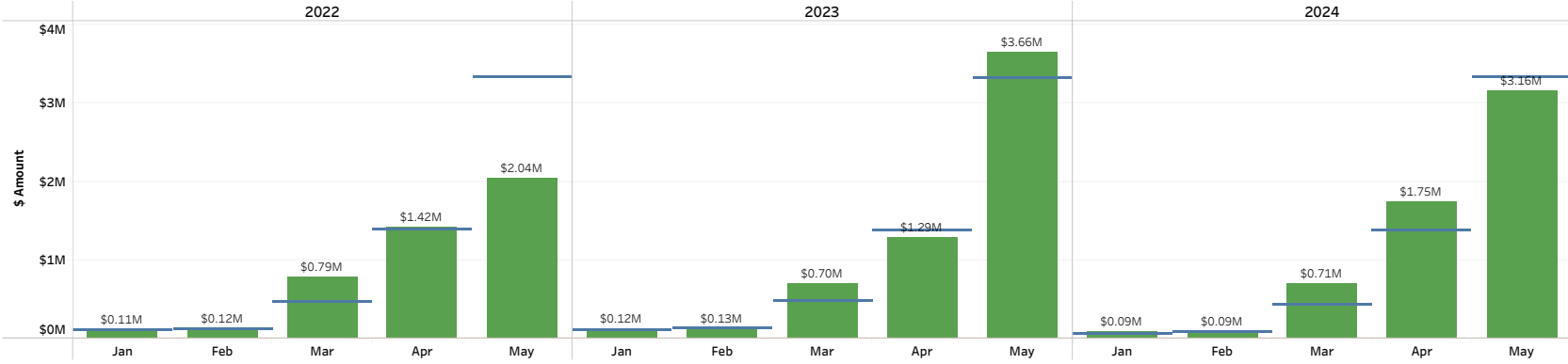
Cumulative Retail Revenue Budget vs Actuals (Original Budget Only): **Large Irrigation Sales**

Rate Class  
Large Irrigation Sales

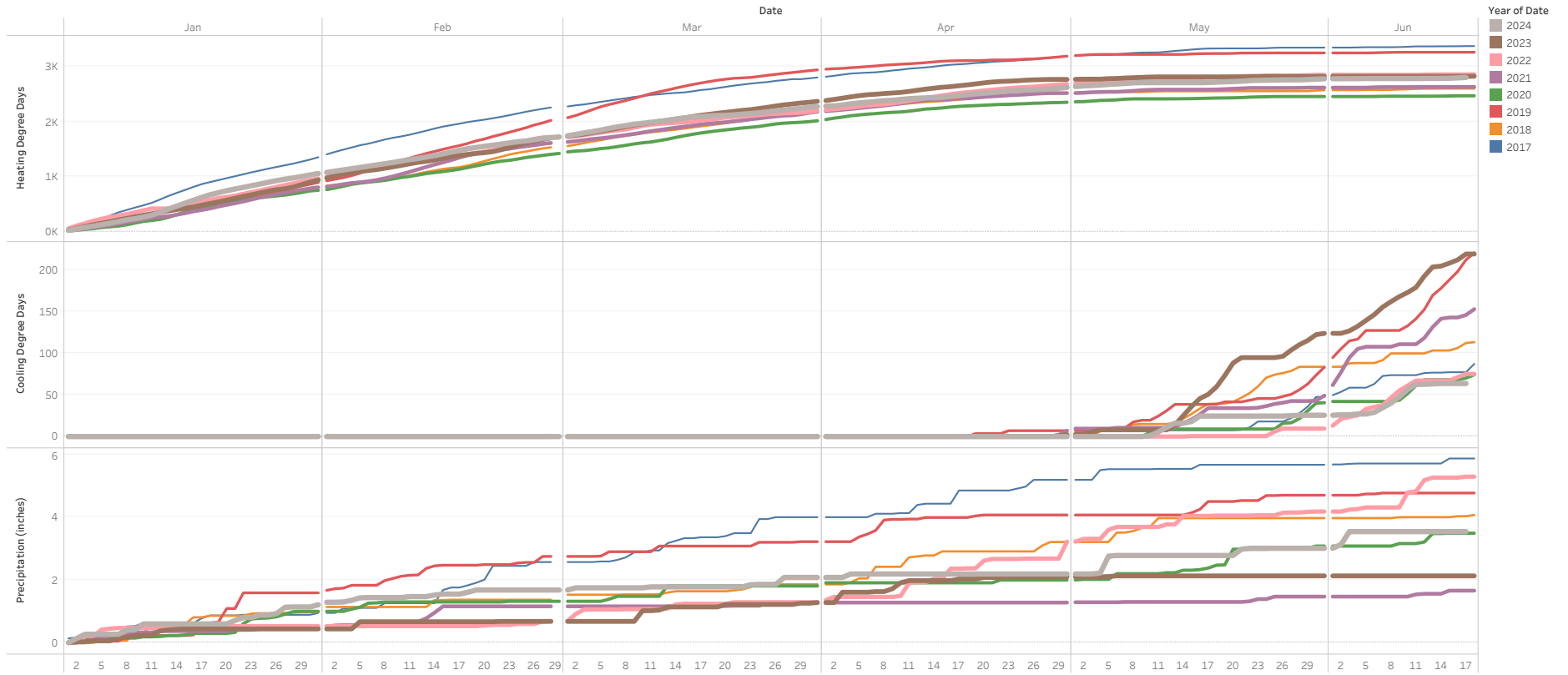
Filter Date Year  
Multiple values

Filter Date Month  
Multiple values

- Legend
- Budget
  - Budget (No COVID Adj)
  - Actual
  - Cumulative Variance (No COVID ..
  - Cumulative Variance (Original)
  - Month Over / (Under)



# Cumulative Daily Weather by Year



Daily weather at Tri-Cities Airport (USW00024163), sourced from NOAA website, <https://www.ncdc.noaa.gov/cdo-web/search?datasetid=GHCND>

Cumulative Net Power Cost Budget vs Actuals (Original and Amended Budget): All

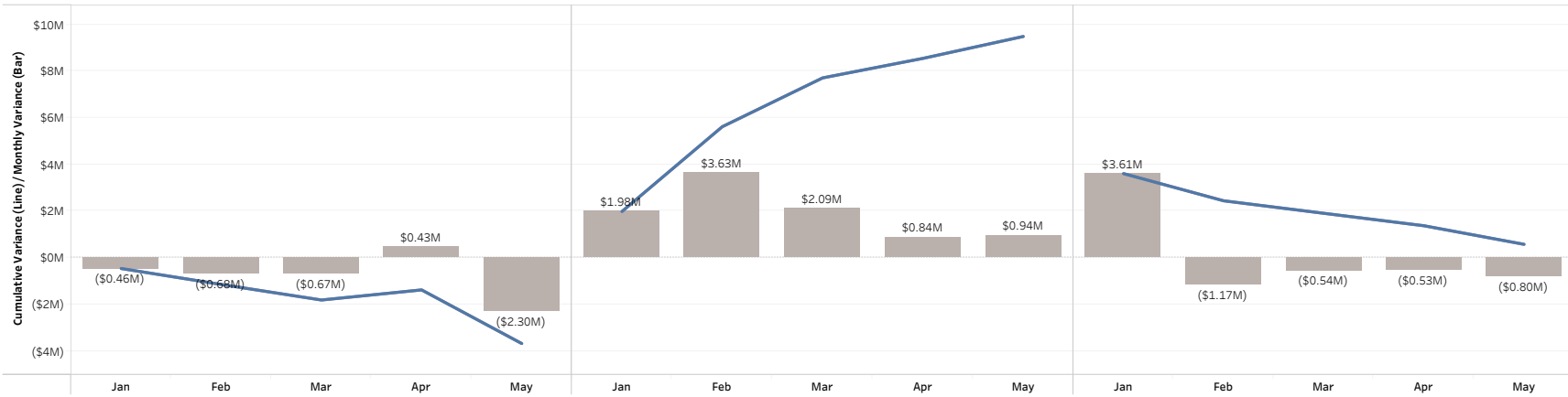
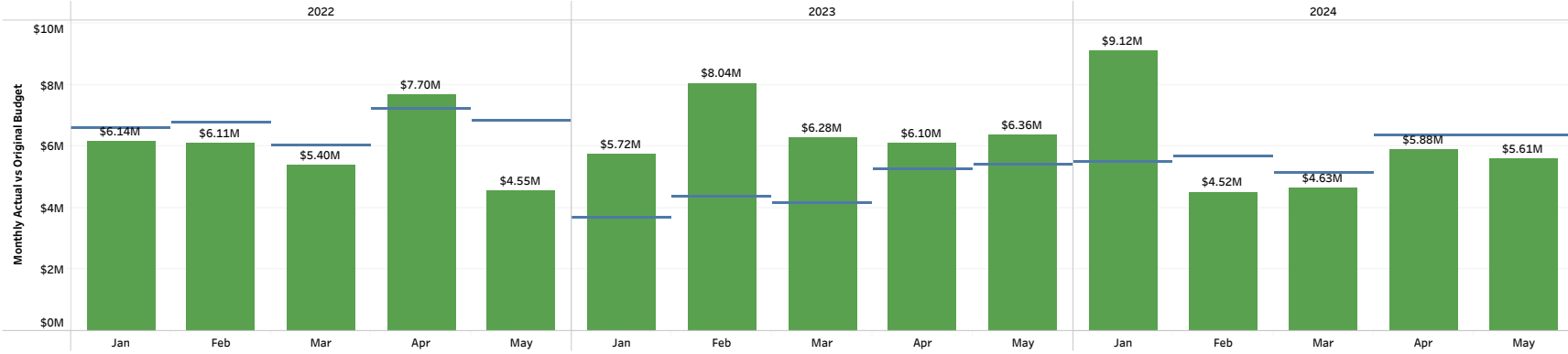
Filter Date Year  
Multiple values

Filter Date Month  
Multiple values

Account Sub Category  
All

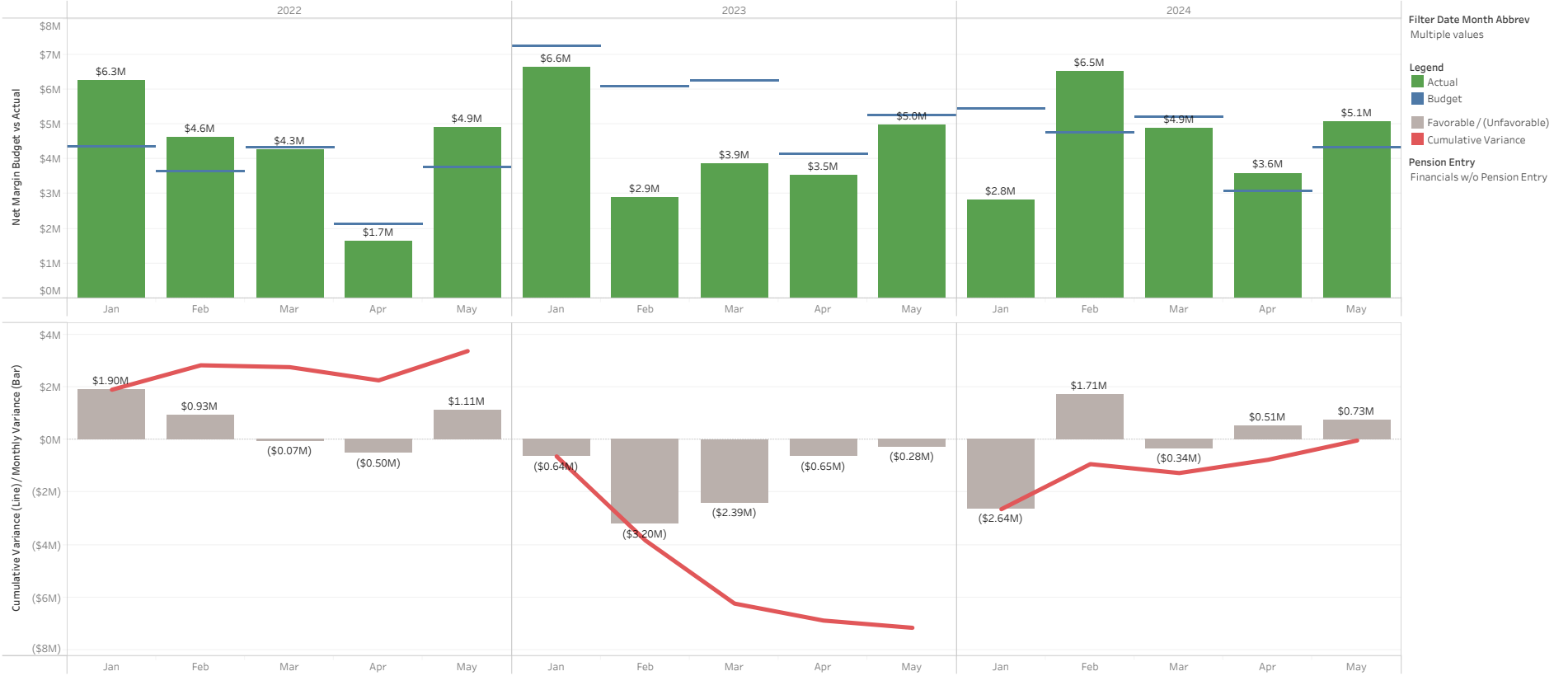
- Legend
- Original Budget
  - Amended Budget
  - Actual Amount
  - Cumulative Variance Ori..
  - Cumulative Variance Am..
  - Month Over / (Under)

Note: Cumulative budget amendment changes are reflected in the month of September.

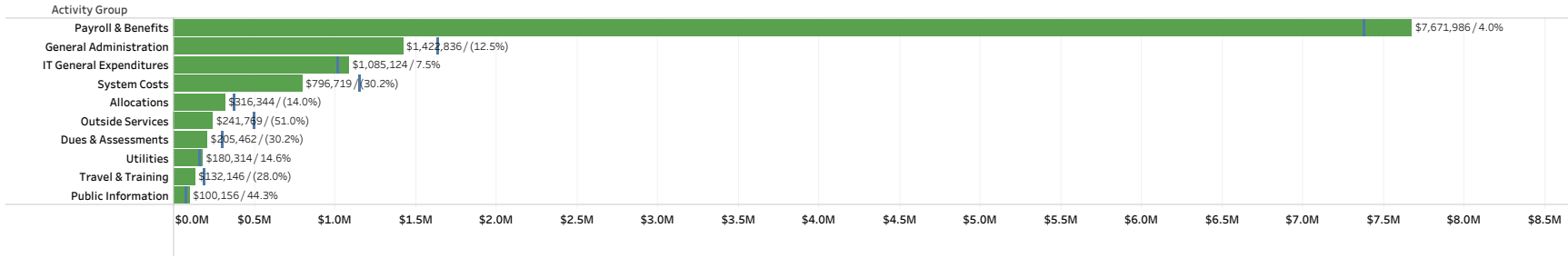




# Cumulative Net Margin Original Budget vs Actuals



2024 Top 10 YTD O&M Actuals & Original Budget by Activity Group Through May



Enter Year  
2024

Select Month  
May

Top N - Activity Category  
10

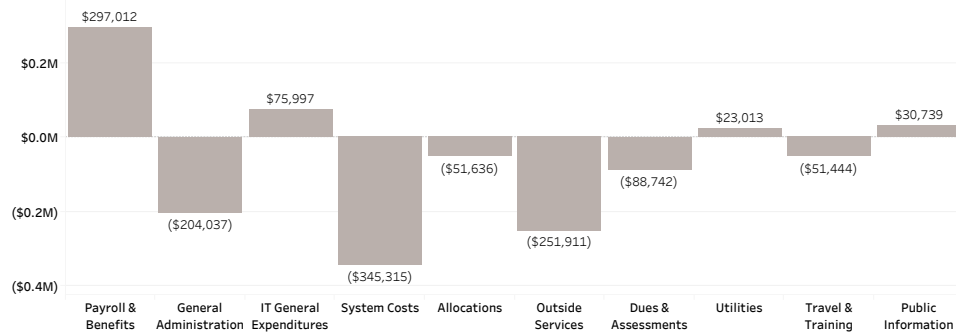
Dept #  
All

Budget Version  
 Actuals  
 Amended Budget  
 Original Budget

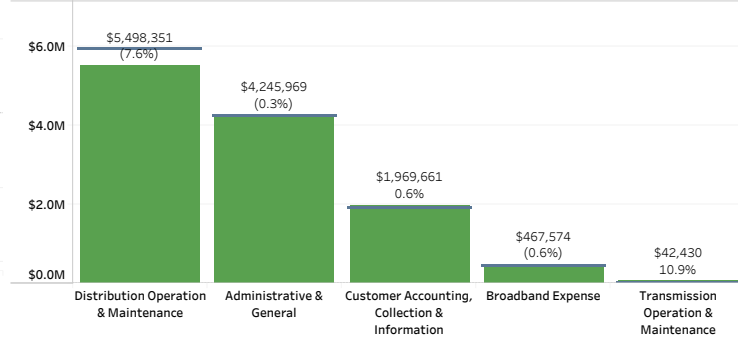
Pension Entry  
Financials w/o Pension En...

Legend  
■ YTD Budget  
■ YTD Actuals  
■ YTD Over/(Under)

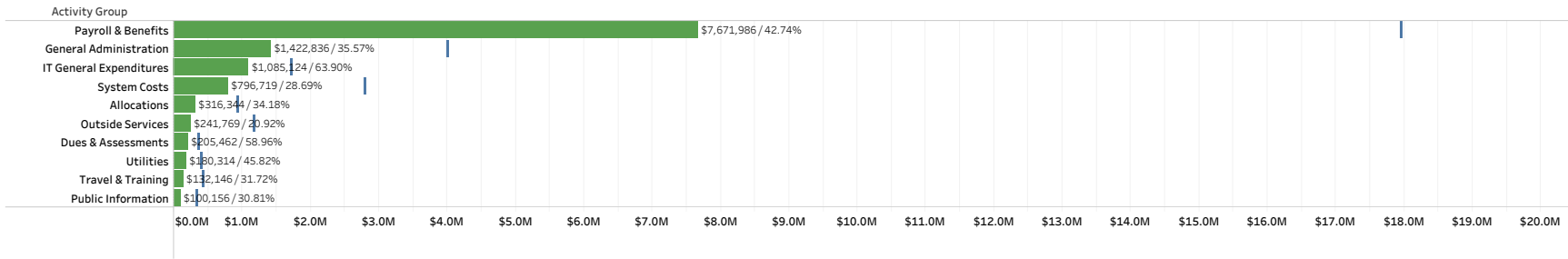
2024 Top 10, YTD O&M Budget Variance by Activity Group Through May



2024 YTD O&M Actuals & Original Budget by Financial Statement Group Through May



2024 Top 10 YTD O&M Actuals & Original Budget by Activity Group Through May  
 % of Year: 41.67%



Enter Year  
2024

Select Month  
May

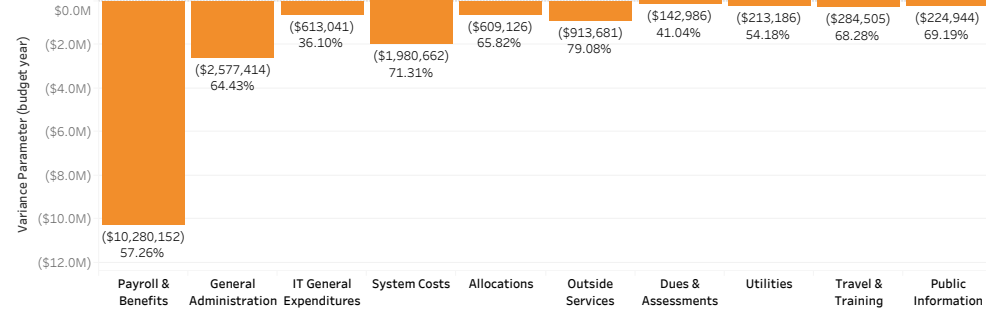
Top N - Activity Category  
10

Dept #  
All

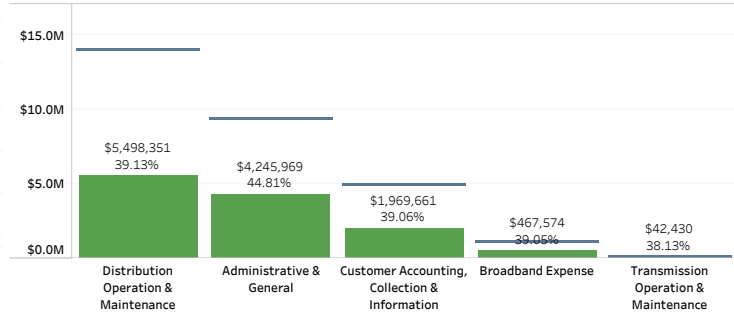
Budget Version  
 Actuals  
 Amended Budget  
 Original Budget

Pension Entry  
Financials w/o Pension Ent..

2024 Top 10, Remaining Budget Amount by Activity Group through May  
 % of Year Remaining: 58.33%



2024 YTD O&M Actuals & Original Budget by Financial Statement Group Through May  
 % of Year: 41.67%



Legend  
 Budget  
 YTD Actuals  
 Remaining Budget

## Capital Drill Down with 2024 Actuals & Original Budget

% of Year: 41.7%

Category	Group	Actual Amount	Budget Amount	% of Budget
<b>Transmission</b>	Transmission Projects	\$5,381,766	\$5,678,315	94.78%
<b>Distribution</b>	Capacity & Reliability	\$2,243,772	\$6,799,235	33.00%
	Customer Growth	\$3,283,446	\$8,641,661	38.00%
	General Plant	\$778,836	\$730,000	106.69%
	Other	\$94,535	\$188,760	50.08%
	Repair & Replace	\$2,571,687	\$3,154,801	81.52%
<b>Broadband</b>	Broadband	\$442,566	\$1,425,054	31.06%
<b>General Plant</b>	General Plant	\$78,347	\$1,368,500	5.73%
<b>Information Technology</b>	Information Technology	\$171,620	\$986,750	17.39%
<b>Other</b>	Other	\$8,259		
<b>Security</b>	Security	\$403,124	\$2,945,200	13.69%
<b>Grand Total</b>		<b>\$15,457,958</b>	<b>\$31,918,277</b>	<b>48.43%</b>

Select Year  
2024

Select Month(s)

- Jan
- Feb
- Mar
- Apr
- May
- Jun
- Jul
- Aug
- Sep
- Oct
- Nov
- Dec
- Budget

Budget Version

- Actuals
- Amended Budget
- Original Budget

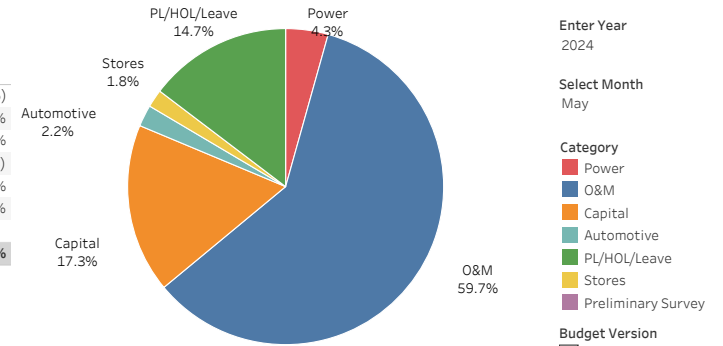
Pension Entry

Financials w/o Pension Entry

YTD **May 2024** Labor by Category: (Activity 11)  
**Actuals & Original Budget**

Category	Current Year Actuals	Current Year Budget	Over / (Under)	Current Year % Variance	Prior Year Actual	Prior Year Variance	Prior Year % Variance
Power	\$307,554	\$307,705	(\$151)	0.0%	\$320,022	(\$12,467)	(3.9%)
O&M	\$4,133,840	\$4,236,351	(\$102,511)	(2.4%)	\$3,911,434	\$222,405	5.7%
Capital	\$1,493,902	\$1,229,730	\$264,172	21.5%	\$1,202,761	\$291,141	24.2%
Automotive	\$122,619	\$156,049	(\$33,431)	(21.4%)	\$144,461	(\$21,842)	(15.1%)
PL/HOL/Leave	\$946,851	\$1,040,819	(\$93,967)	(9.0%)	\$714,164	\$232,687	32.6%
Stores	\$132,181	\$129,961	\$2,220	1.7%	\$127,980	\$4,202	3.3%
Preliminary Survey	(\$433)		(\$433)			(\$433)	
<b>Grand Total</b>	<b>\$7,136,514</b>	<b>\$7,100,615</b>	<b>\$35,899</b>	<b>0.5%</b>	<b>\$6,420,822</b>	<b>\$715,692</b>	<b>11.1%</b>

YTD **May 2024** Budget: (Activity 11)



Activity 11

Enter Year 2024

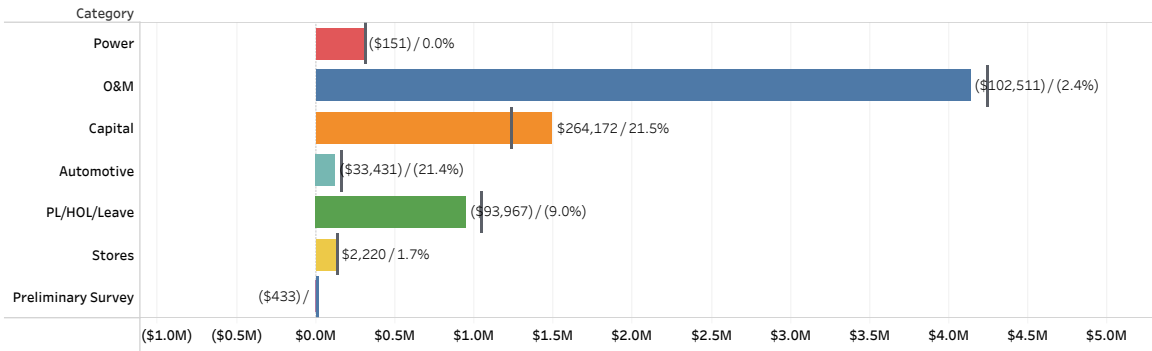
Select Month May

- Category**
- Power
  - O&M
  - Capital
  - Automotive
  - PL/HOL/Leave
  - Stores
  - Preliminary Survey

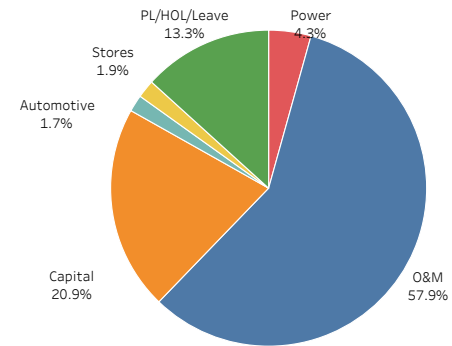
- Budget Version**
- Actuals
  - Amended Budget
  - Original Budget

YTD **May 2024** Labor by Category: (Activity 11)

(Amount displayed is actuals minus budget / % variance from budget)



YTD **May 2024** Actuals: (Activity 11)



Pension Entry  
 Financials w/o Pension Entry

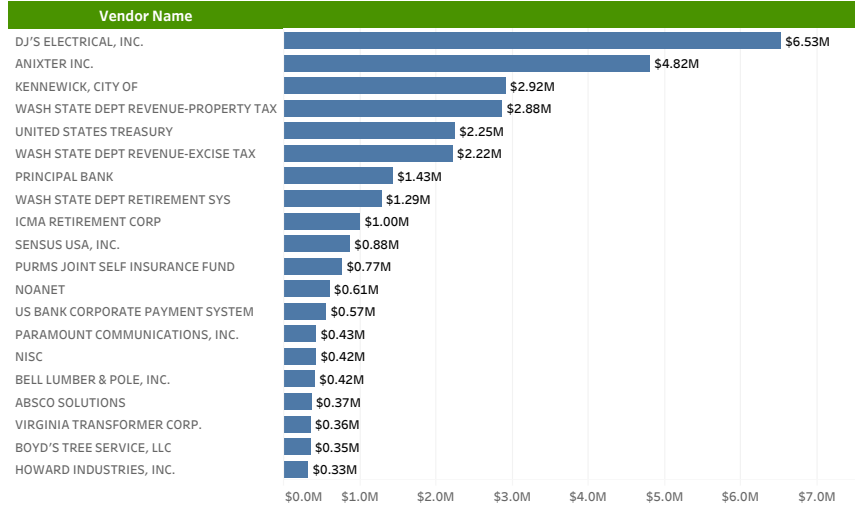
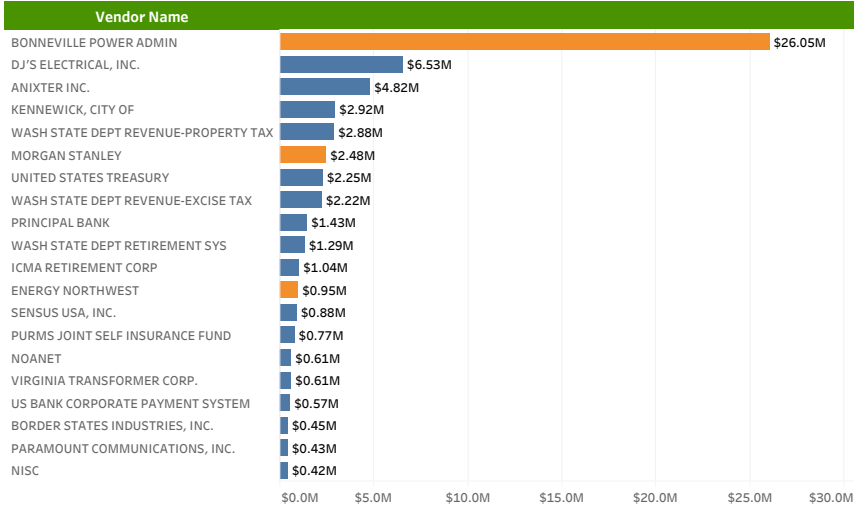
- [Go to the Monthly View](#)
- [Monthly Multi-Year Graphs](#)
- [Cumulative Multi-Year Graphs](#)

### District Top 20 Vendors - 2024 YTD (Including Power Transactions)

### District Top 20 Vendors - 2024 YTD (Excluding Power Transactions)

Year  
2024

Top N Vendor  
20



# Revenue Class Hourly Demand

## By Year for Revenue Class: All in Month: June

Select filters: Year All Month June

### Billed Revenue Class

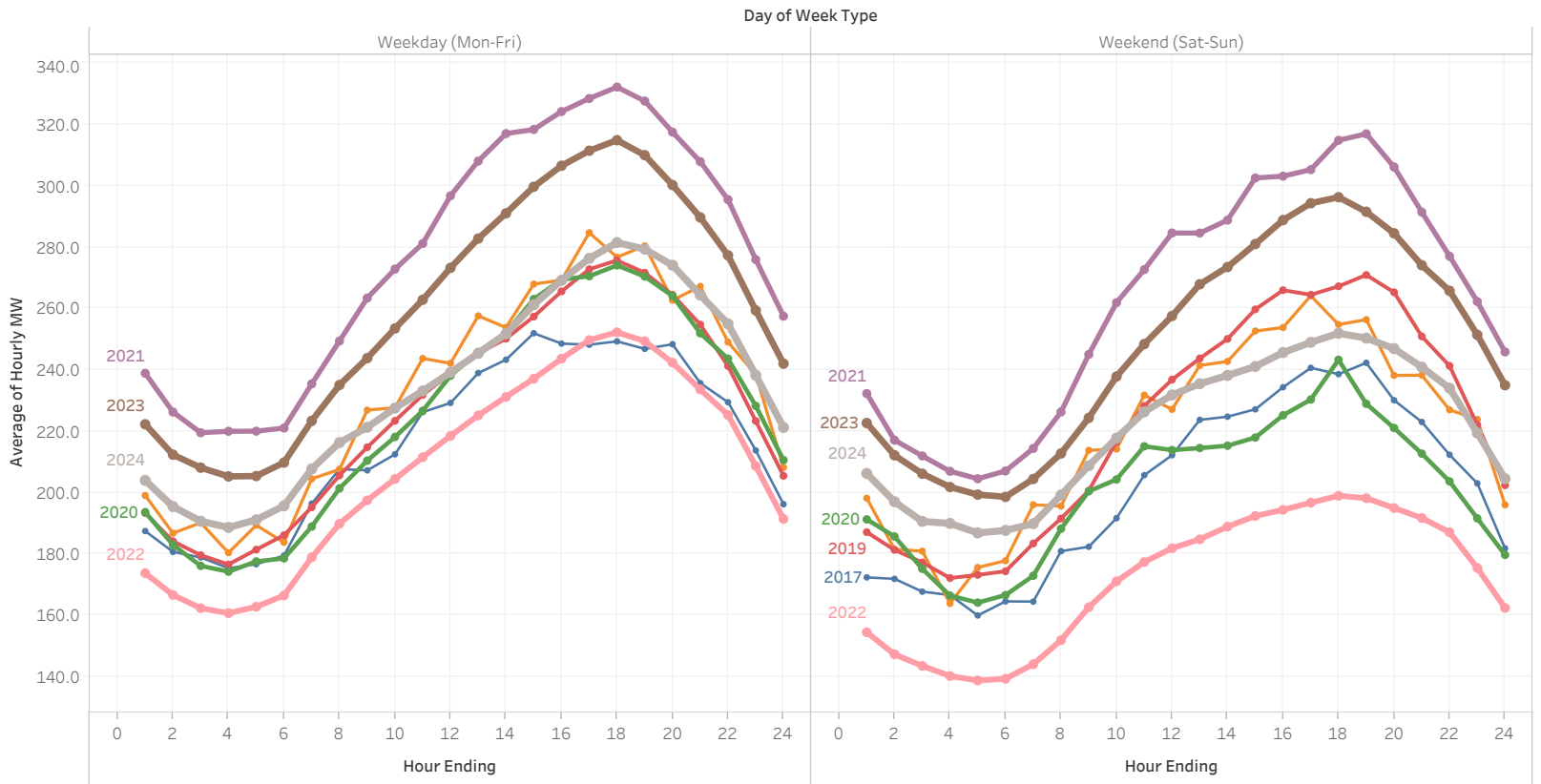
- In
- Out

### Revenue Class

- Residential
- Small General
- Medium General
- Large General
- Large Industrial
- Large Irrigation
- Small Irrigation

AMI data updated through:

Tue, June 18, 2024



# Revenue Class Hourly Demand

By Year for Revenue Class: **Residential** in Month: **June**

Select filters: Year All Month June

Billed Revenue Class

- In
- Out

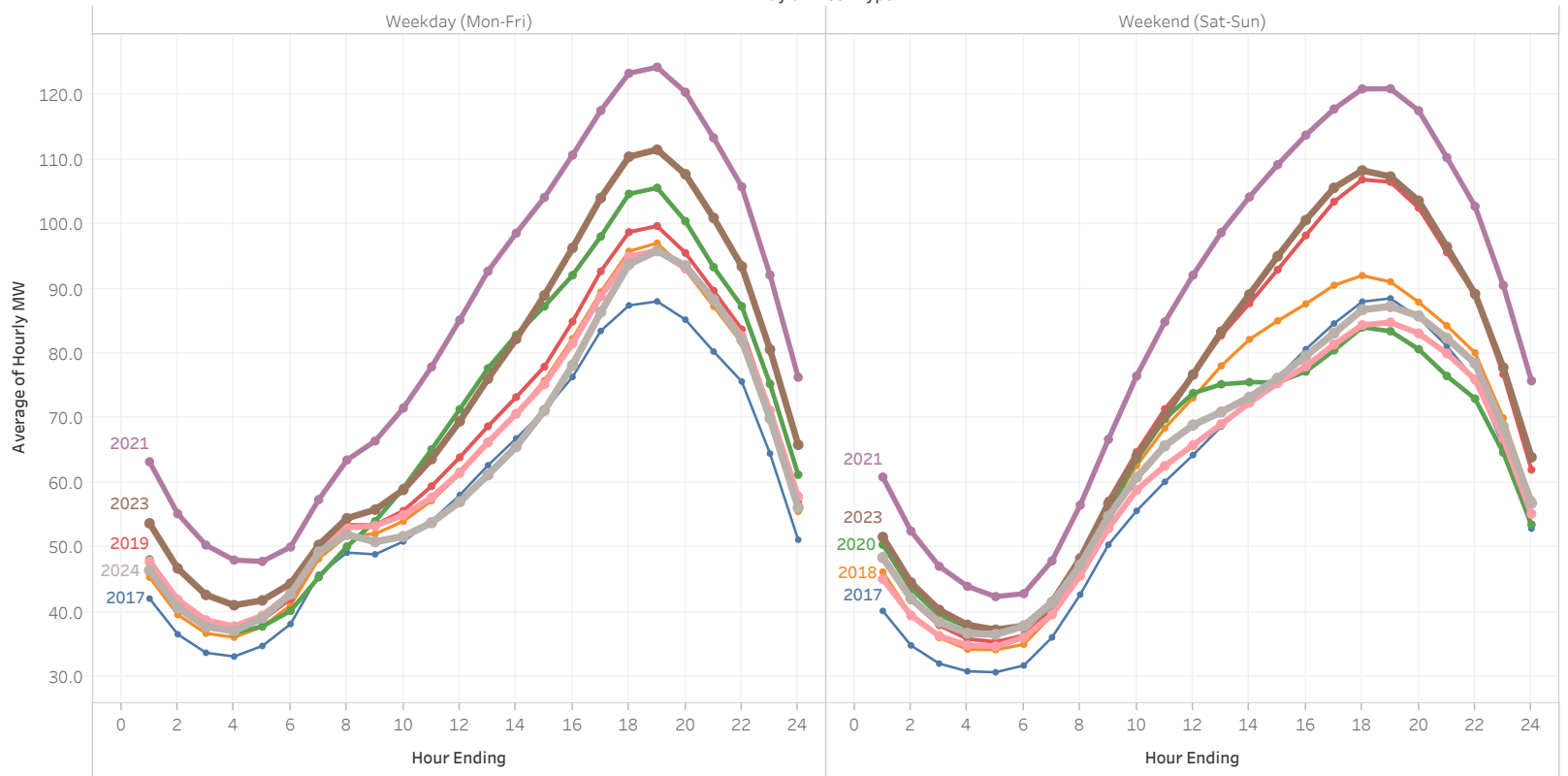
Revenue Class

- Residential
- Small General
- Medium General
- Large General
- Large Industrial
- Large Irrigation
- Small Irrigation

Day of Week Type

Weekday (Mon-Fri)

Weekend (Sat-Sun)



AMI data updated through:

Tue, June 18, 2024



# Revenue Class Hourly Demand

By Year for Revenue Class: **Small General, Medium General, Large General** in Month: **June**

Select filters:

Year  
All

Month  
June

Billed Revenue Class

- In
- Out

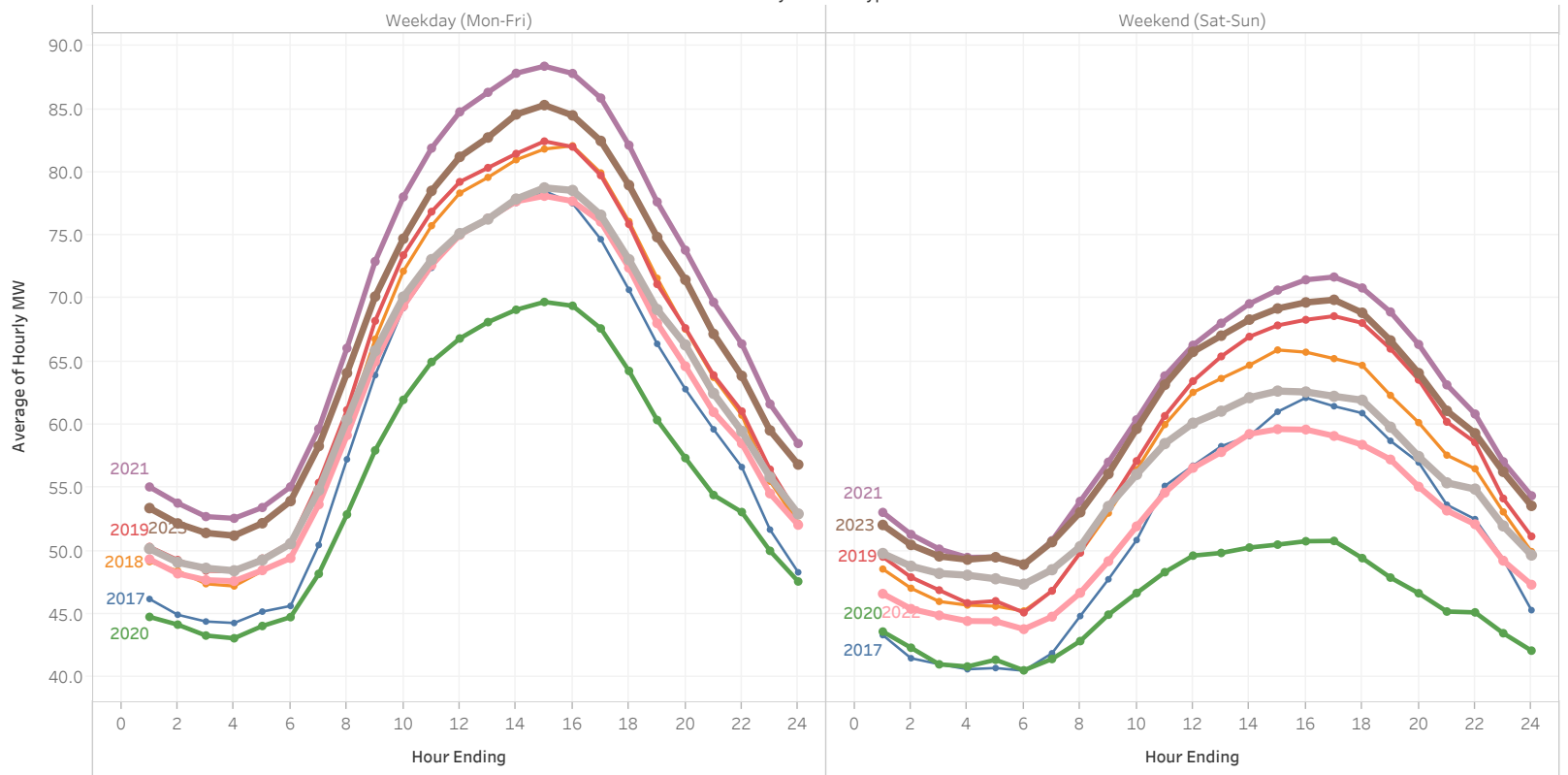
Revenue Class

- Residential
- Small General
- Medium General
- Large General
- Large Industrial
- Large Irrigation
- Small Irrigation

Day of Week Type

Weekday (Mon-Fri)

Weekend (Sat-Sun)



AMI data updated through:

Tue, June 18, 2024

# Revenue Class Hourly Demand

By Year for Revenue Class: **Large Irrigation** in Month: **June**

Select filters: Year All Month June

Billed Revenue Class

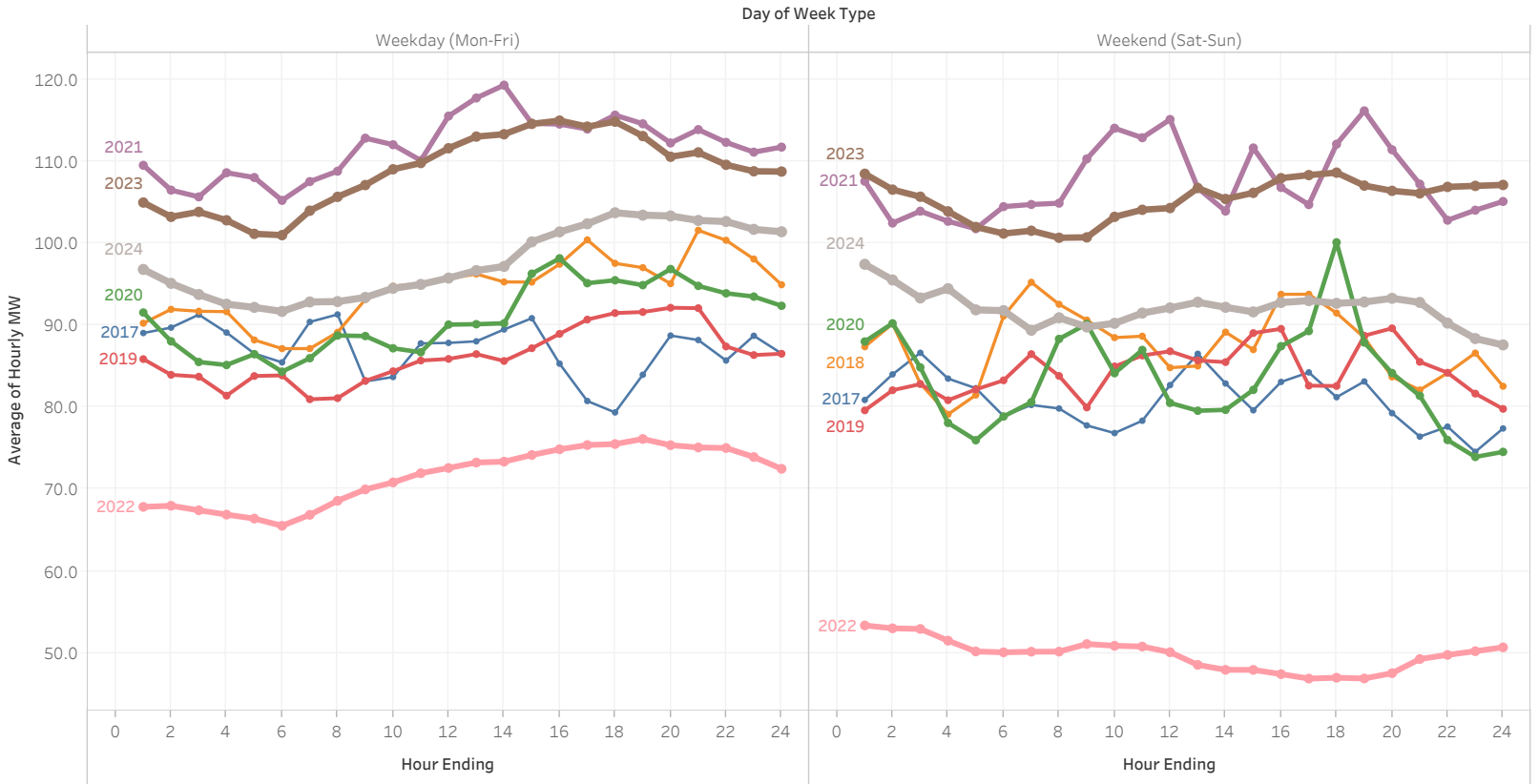
- In
- Out

Revenue Class

- Residential
- Small General
- Medium General
- Large General
- Large Industrial
- Large Irrigation
- Small Irrigation

AMI data updated through:

Tue, June 18, 2024



# Revenue Class Cumulative Energy

## By Year for Revenue Class: All in Month: June

Select filters:

Year: All  
 Month: June  
 Month-Day: Multiple values

Billed Revenue Class

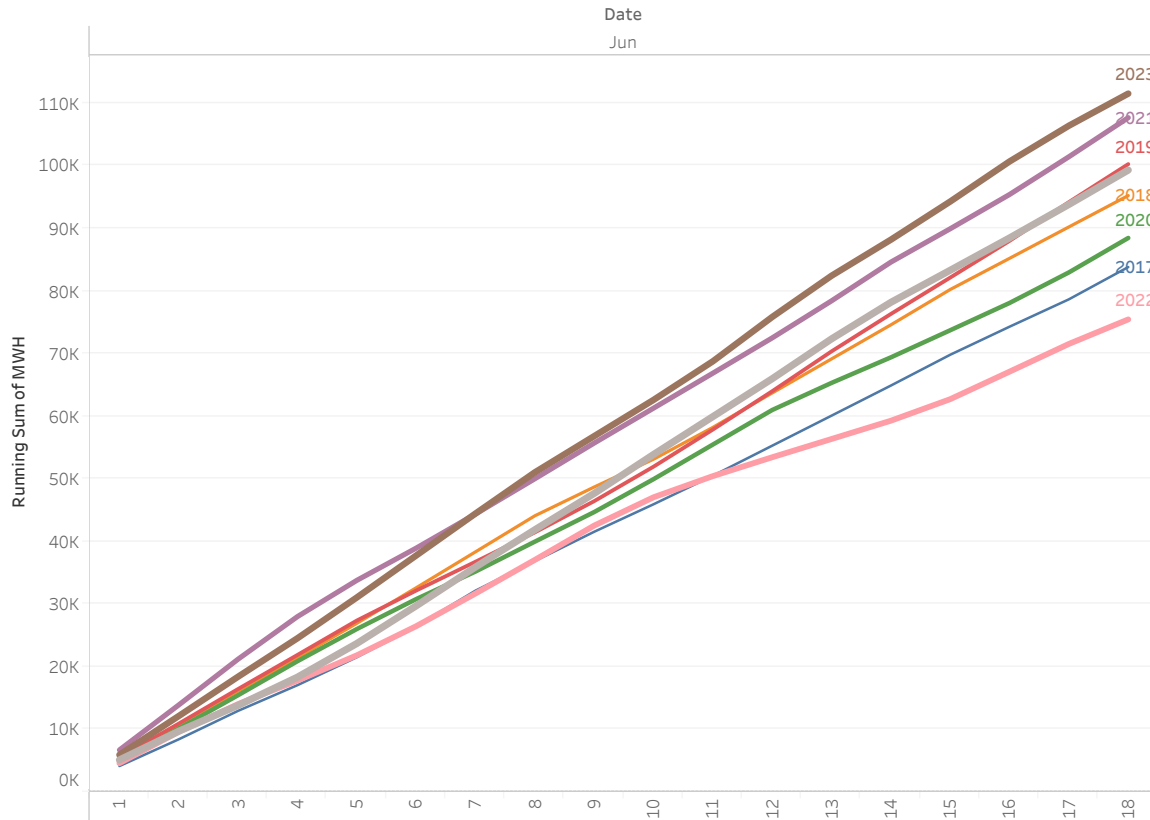
- In
- Out

Revenue Class

- Residential
- Small General
- Medium General
- Large General
- Large Industrial
- Large Irrigation
- Small Irrigation

AMI data updated through:

Tue, June 18, 2024



Year Over Year Summary:  
 (hover to highlight year)

Year of Date	MWH	MWH Difference	% Difference
2017	83,824		
2018	95,239	11,415	13.62%
2019	100,263	5,024	5.27%
2020	88,472	-11,791	-11.76%
2021	107,678	19,206	21.71%
2022	75,465	-32,213	-29.92%
2023	111,522	36,057	47.78%
2024	99,312	-12,210	-10.95%

Note:  
 Totals do not include non-AMI meter readings.

# Revenue Class Cumulative Energy

By Year for Revenue Class: **Residential** in Month: **June**

Select filters: Year All Month June Month-Day Multiple values

Billed Revenue Class

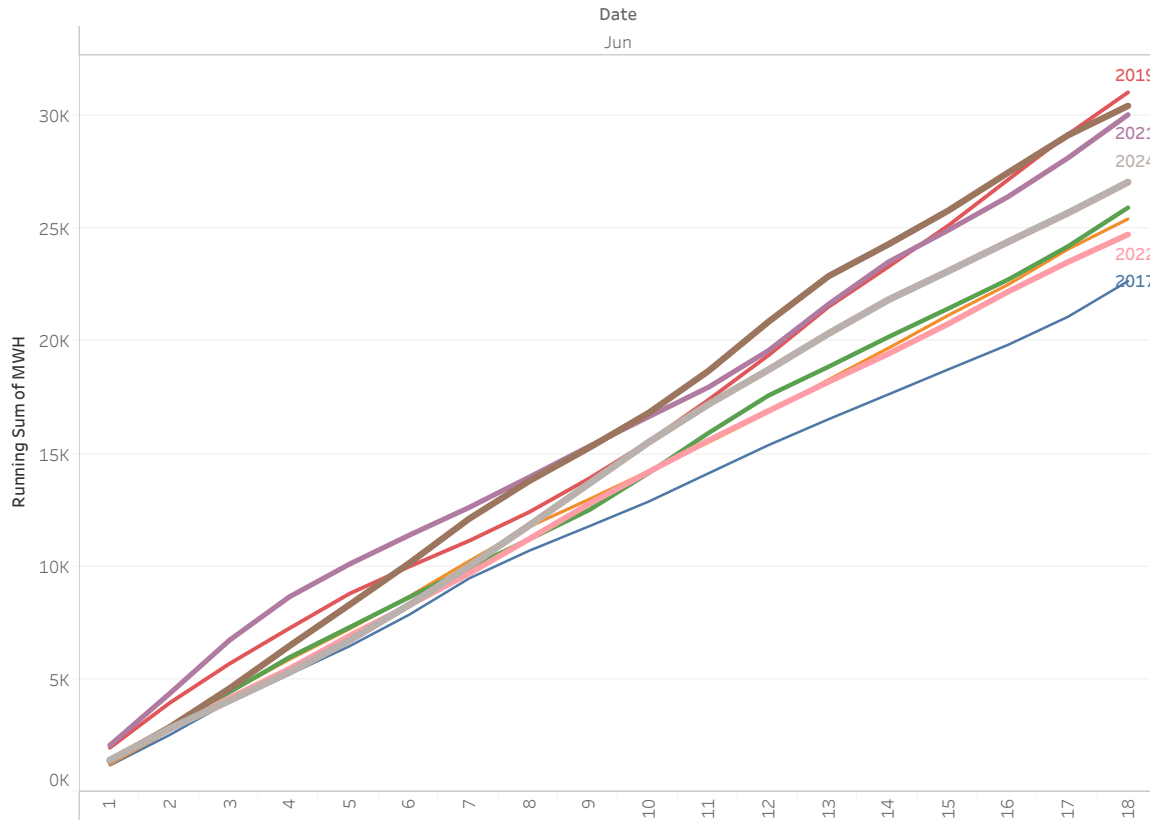
- In
- Out

Revenue Class

- Residential
- Small General
- Medium General
- Large General
- Large Industrial
- Large Irrigation
- Small Irrigation

AMI data updated through:

Tue, June 18, 2024



Year Over Year Summary:  
(hover to highlight year)

Year of Date	MWH	MWH Difference	% Difference
2017	22,673		
2018	25,434	2,761	12.18%
2019	31,053	5,619	22.09%
2020	25,936	-5,117	-16.48%
2021	30,059	4,123	15.90%
2022	24,744	-5,315	-17.68%
2023	30,455	5,710	23.08%
2024	27,066	-3,388	-11.13%

Note:  
Totals do not include non-AMI meter readings.

# Revenue Class Cumulative Energy

By Year for Revenue Class: **Small General, Medium General, Large General** in Month: **June**

Select filters: Year: All Month: June Month-Day: Multiple values

Billed Revenue Class

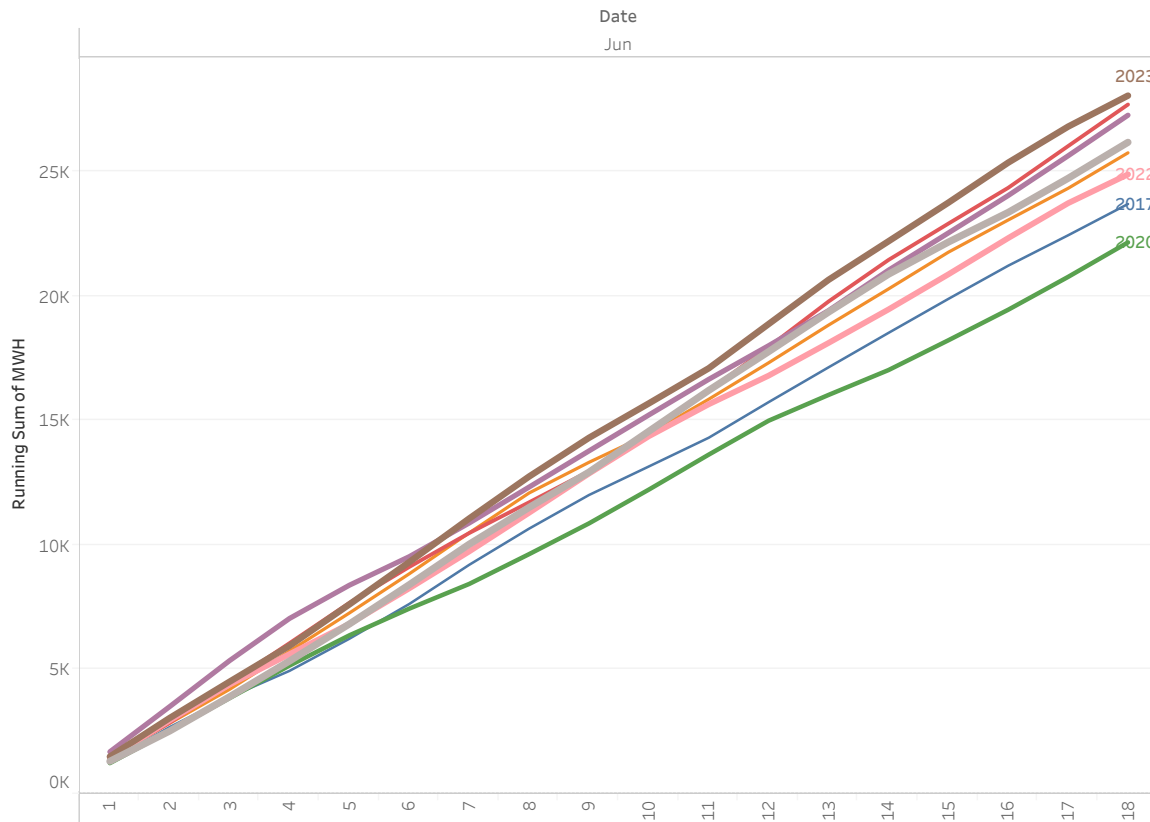
- In
- Out

Revenue Class

- Residential
- Small General
- Medium General
- Large General
- Large Industrial
- Large Irrigation
- Small Irrigation

AMI data updated through:

Tue, June 18, 2024



Year Over Year Summary:  
(hover to highlight year)

Year of Date	MWH	MWH Difference	% Difference
2017	23,712		
2018	25,769	2,057	8.67%
2019	27,710	1,941	7.53%
2020	22,170	-5,541	-20.00%
2021	27,281	5,112	23.06%
2022	24,903	-2,378	-8.72%
2023	28,068	3,165	12.71%
2024	26,192	-1,876	-6.68%

Note:  
Totals do not include non-AMI meter readings.

# Revenue Class Cumulative Energy

By Year for Revenue Class: **Large Irrigation** in Month: **June**

Select filters:

Year: All  
 Month: June  
 Month-Day: Multiple values

Billed Revenue Class

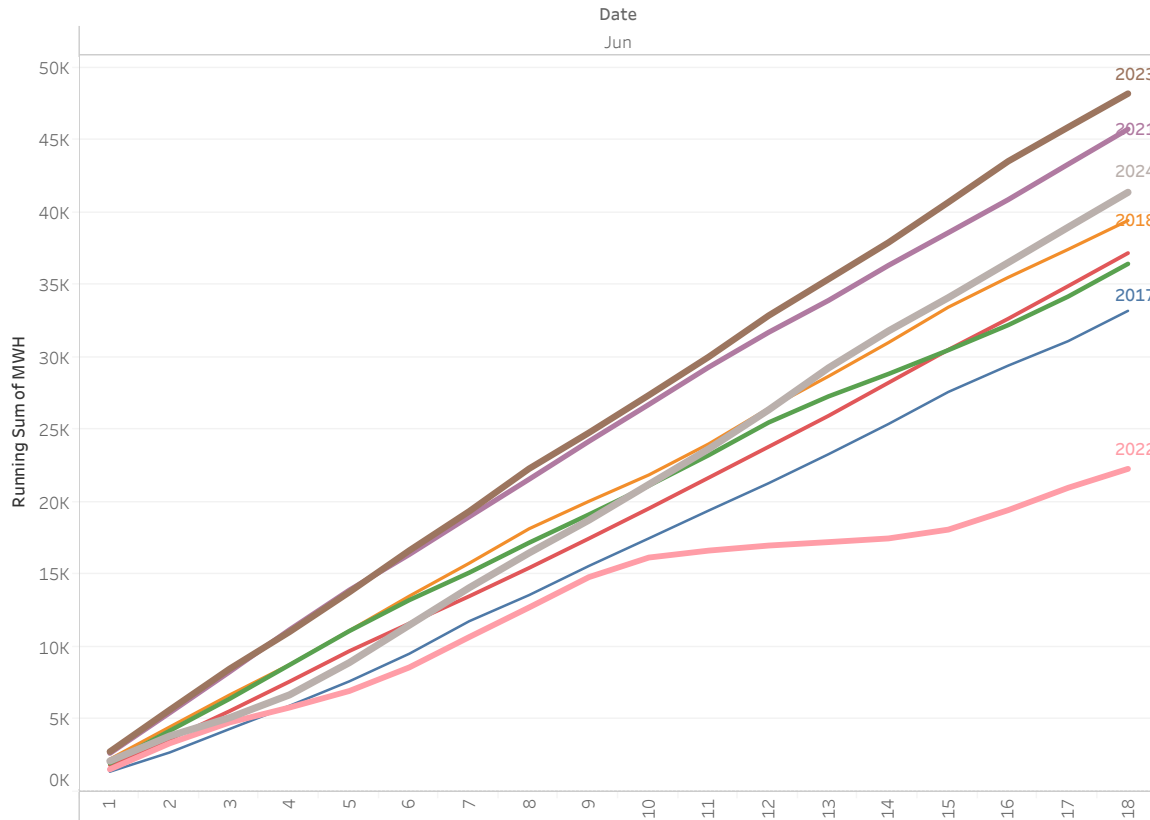
- In
- Out

Revenue Class

- Residential
- Small General
- Medium General
- Large General
- Large Industrial
- Large Irrigation
- Small Irrigation

AMI data updated through:

Tue, June 18, 2024



Year Over Year Summary:  
 (hover to highlight year)

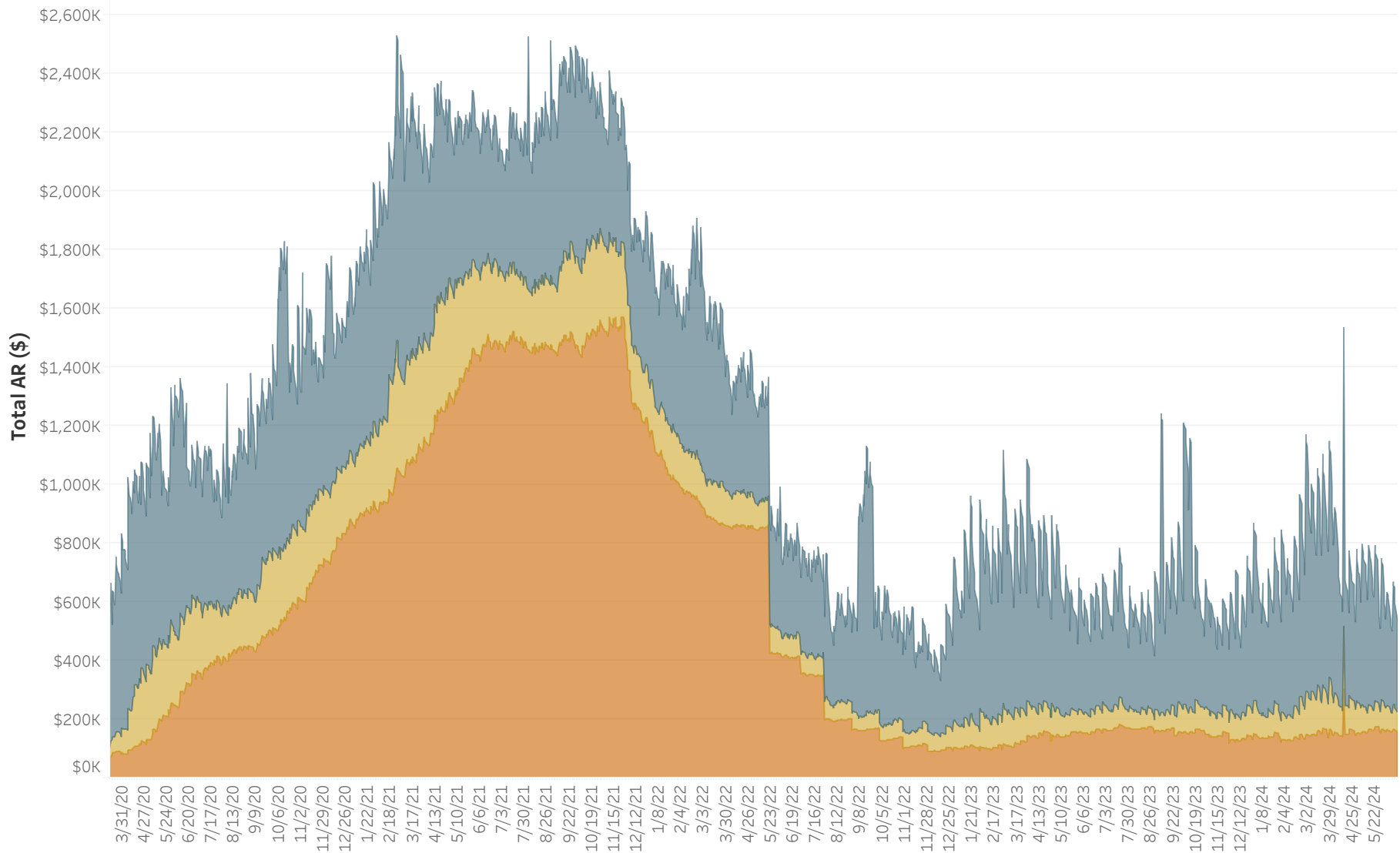
Year of Date	MWH	MWH Difference	% Difference
2017	33,207		
2018	39,440	6,233	18.77%
2019	37,192	-2,247	-5.70%
2020	36,450	-742	-2.00%
2021	45,744	9,294	25.50%
2022	22,299	-23,445	-51.25%
2023	48,198	25,899	116.14%
2024	41,388	-6,811	-14.13%

Note:  
 Totals do not include non-AMI meter readings.  
 No AMI readings for the pump decks at Spaw, Paterson #1 & #2 and Prior #1 Bay 1 & 2.

# Past Due AR in Dollars for Selected Revenue Classes:

All  
 Balance Aging: **30 Days** | **60 Days** | **90+ Days**

Consumer Class Selection:	Accounts	Dollars
Regular	<b>30 Days</b> 2,933	\$321,938
	<b>60 Days</b> 735	\$65,242
Revenue Class Selection:		
All	<b>90+ Days</b> 754	\$155,984
	<b>Past Due</b> 4,422	\$543,163
Service Status:		
All	<b>Total AR</b> 53,260	\$5,951,337



AR data as of 6/19/2024. Data source is AR Balance History Tableau report view.

## Past Due AR in Dollars for Selected Revenue Classes:

All

Balance Aging: [30 Days](#) | [60 Days](#) | [90+ Days](#)

Consumer Class Selection:

Regular

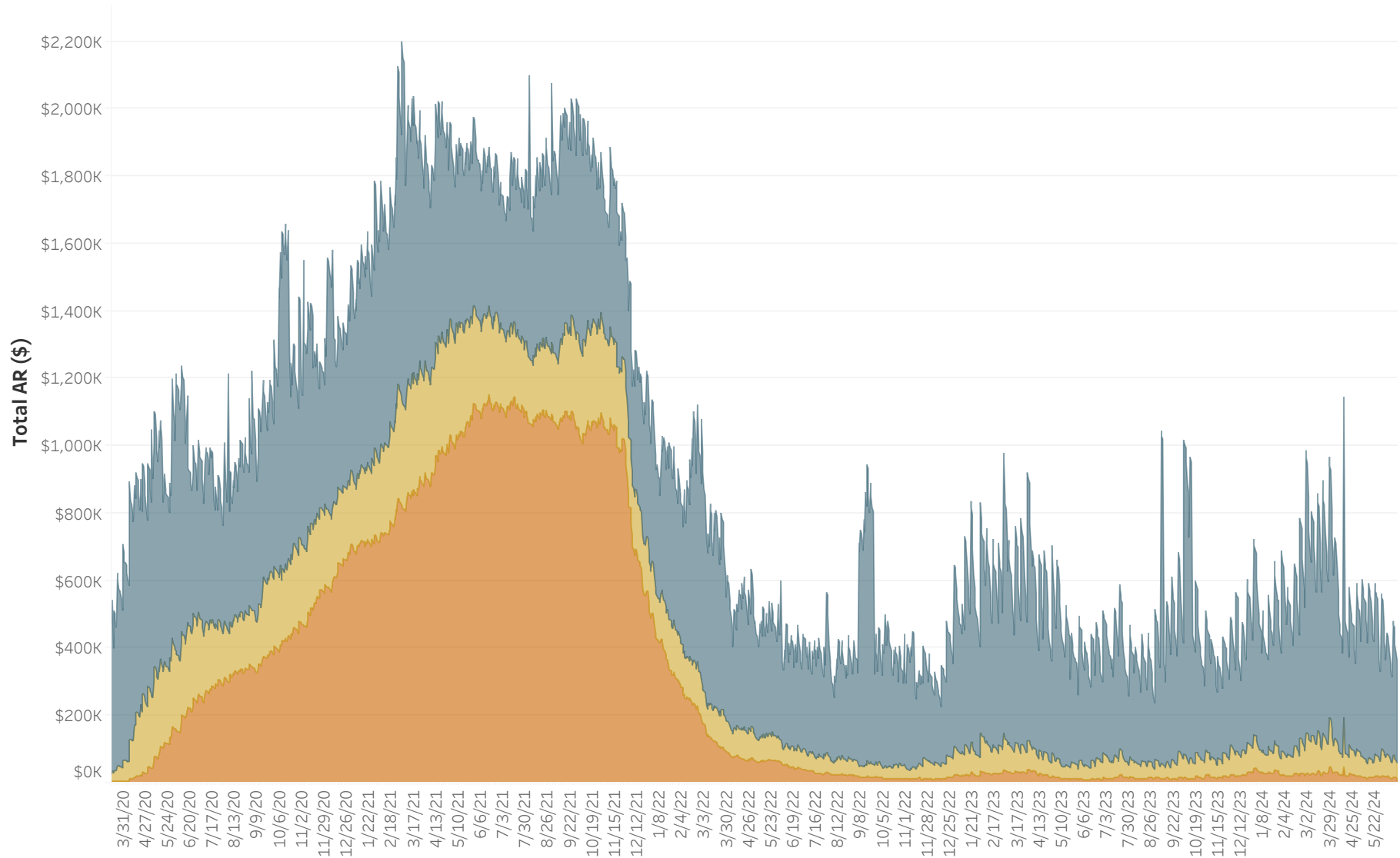
Revenue Class Selection:

All

Service Status:

Active

	Accounts	Dollars
<b>30 Days</b>	2,764	\$302,188
<b>60 Days</b>	619	\$46,993
<b>90+ Days</b>	146	\$11,515
<b>Past Due</b>	<b>3,529</b>	<b>\$360,696</b>
<b>Total AR</b>	<b>51,274</b>	<b>\$5,760,049</b>



AR data as of 6/19/2024. Data source is AR Balance History Tableau report view.



# Past Due AR in Dollars for Selected Revenue Classes:

Consumer Class Selection:

Regular

Revenue Class Selection:

Residential

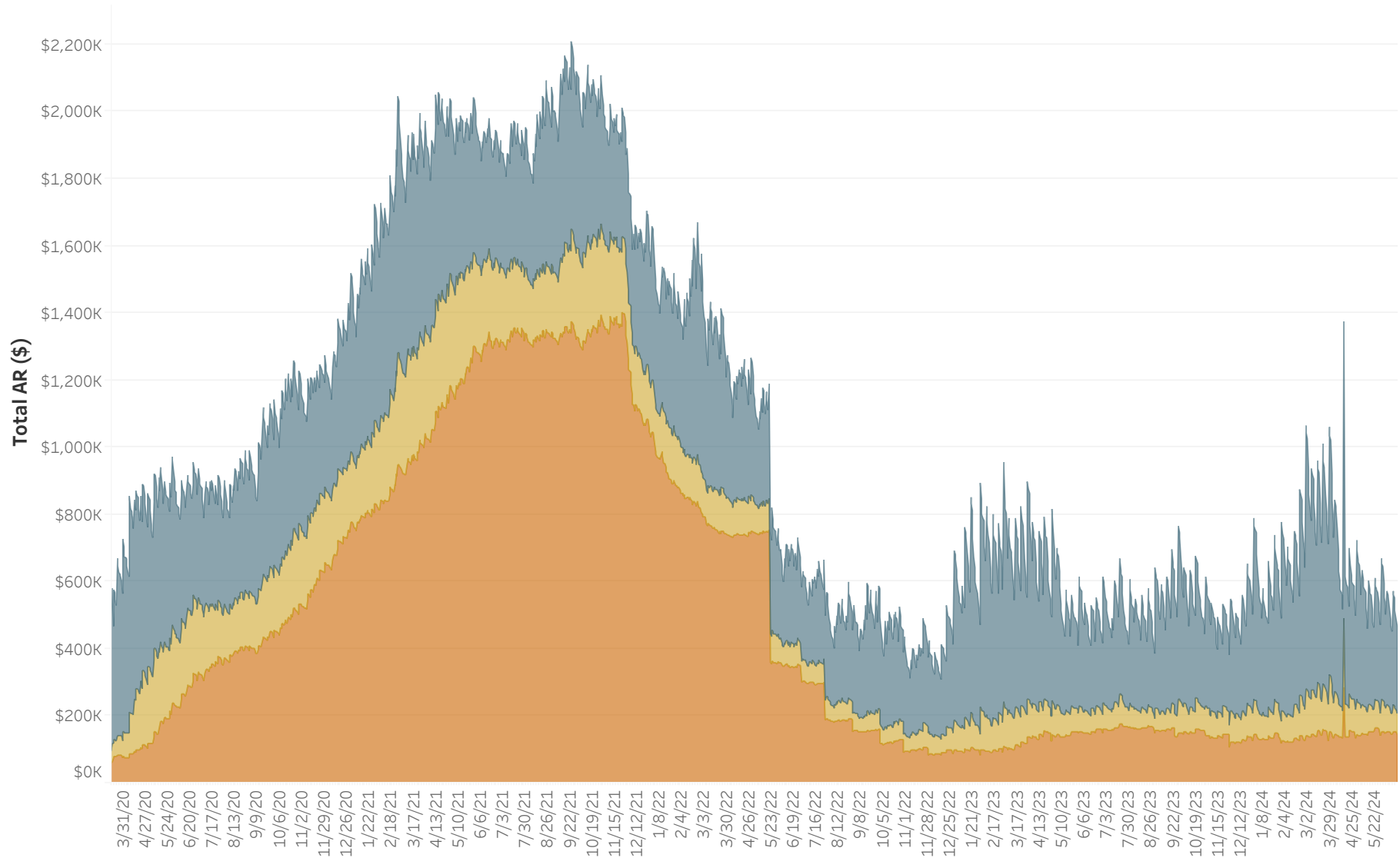
Service Status:

All

	Accounts	Dollars
<b>30 Days</b>	2,598	\$258,928
<b>60 Days</b>	683	\$61,816
<b>90+ Days</b>	698	\$145,057
<b>Past Due</b>	<b>3,979</b>	<b>\$465,801</b>
<b>Total AR</b>	<b>44,169</b>	<b>\$2,170,924</b>

## Residential

Balance Aging: [30 Days](#) | [60 Days](#) | [90+ Days](#)



AR data as of 6/19/2024. Data source is AR Balance History Tableau report view.

# Past Due AR in Dollars for Selected Revenue Classes:

## Residential

Balance Aging: 30 Days | 60 Days | 90+ Days

**Consumer Class Selection:**

Regular

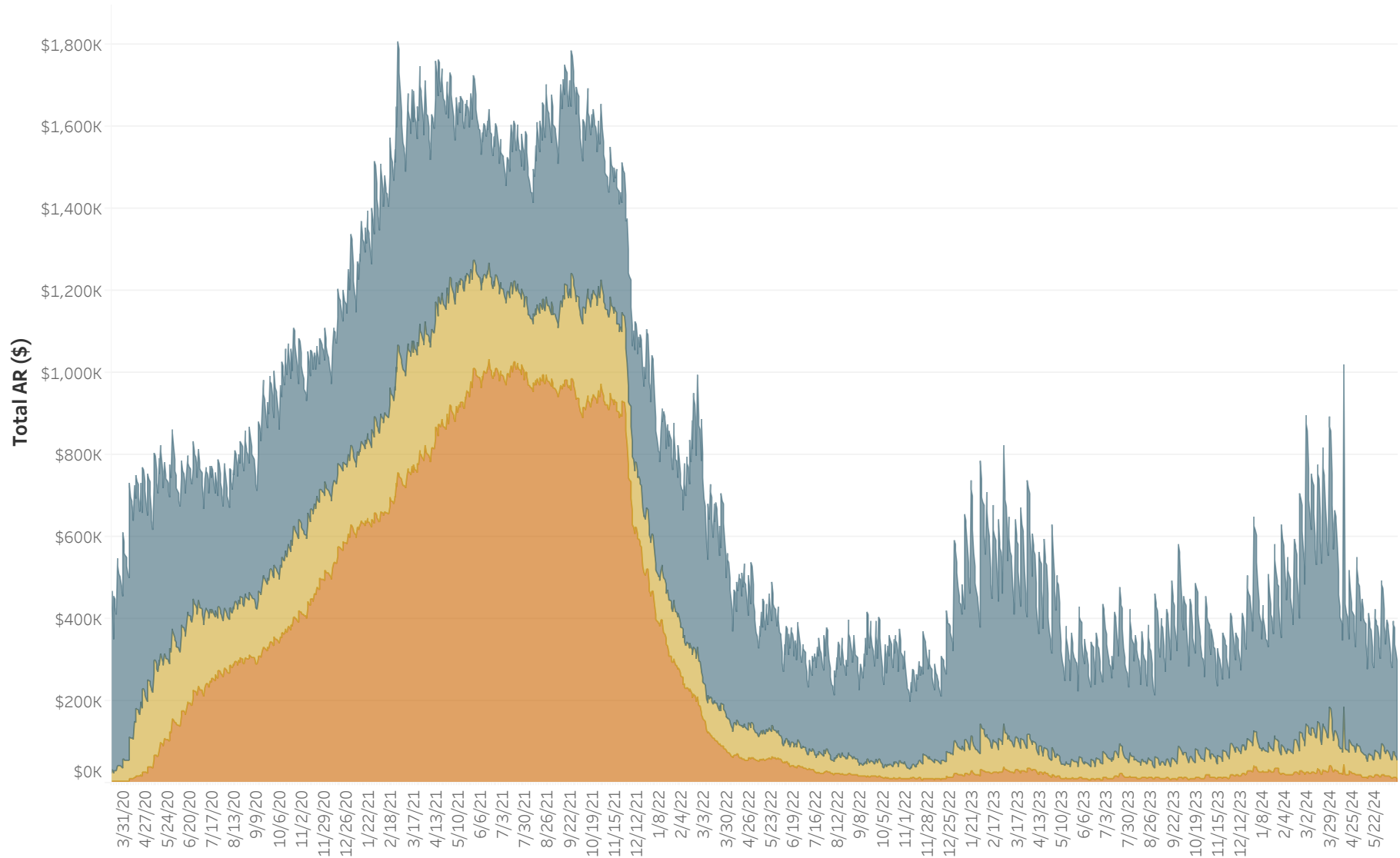
**Revenue Class Selection:**

Residential

**Service Status:**

Active

	Accounts	Dollars
<b>30 Days</b>	2,434	\$241,046
<b>60 Days</b>	572	\$44,350
<b>90+ Days</b>	112	\$10,203
<b>Past Due</b>	<b>3,118</b>	<b>\$295,599</b>
<b>Total AR</b>	<b>42,280</b>	<b>\$1,994,408</b>



AR data as of 6/19/2024. Data source is AR Balance History Tableau report view.

# Past Due AR in Dollars for Selected Revenue Classes:

## Residential

Balance Aging: [30 Days](#) | [60 Days](#) | [90+ Days](#)

### Consumer Class Selection:

Regular

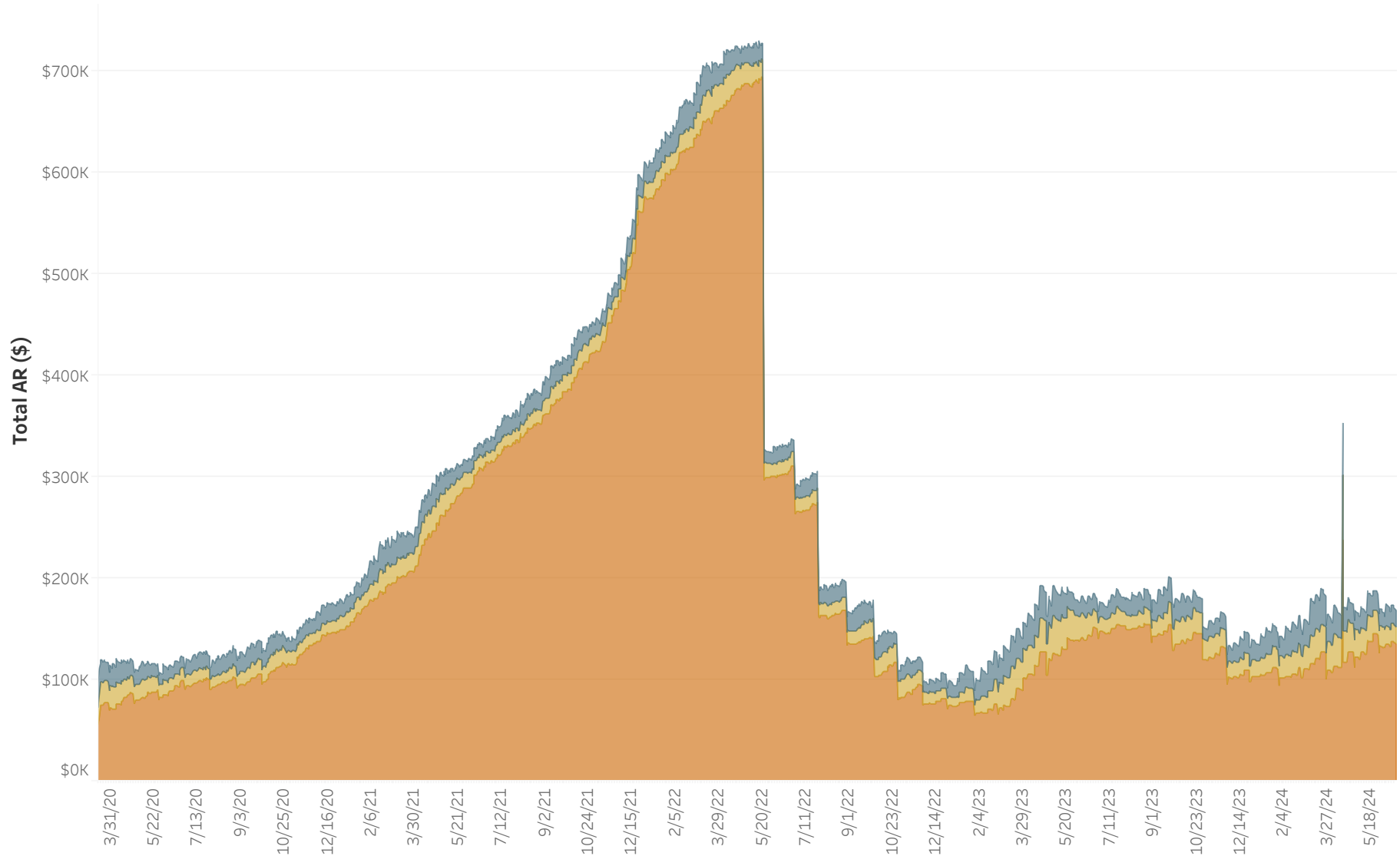
### Revenue Class Selection:

Residential

### Service Status:

Inactive

	Accounts	Dollars
<b>30 Days</b>	147	\$16,180
<b>60 Days</b>	105	\$16,977
<b>90+ Days</b>	582	\$134,110
<b>Past Due</b>	<b>834</b>	<b>\$167,268</b>
<b>Total AR</b>	<b>1,583</b>	<b>\$170,820</b>



AR data as of 6/19/2024. Data source is AR Balance History Tableau report view.