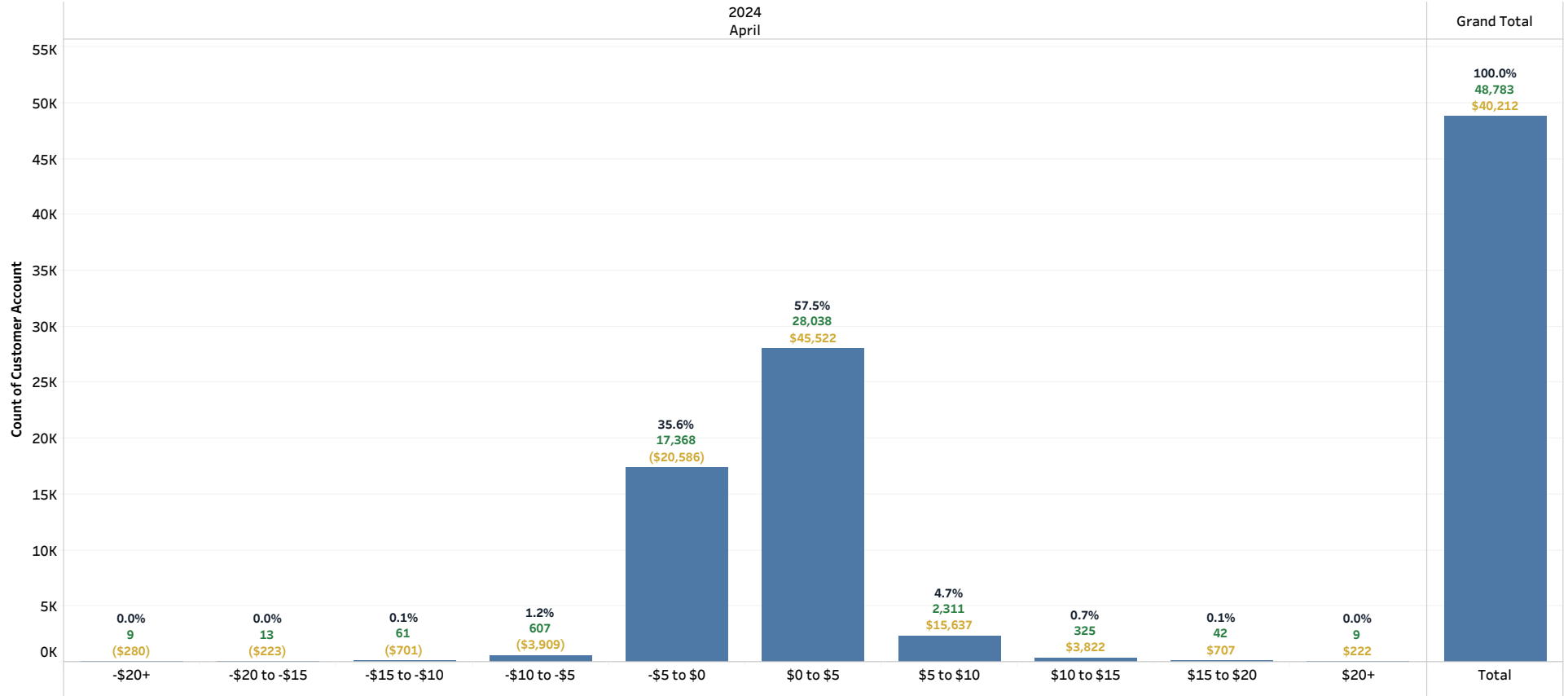


Residential Demand Billing Impact Analysis by Customer Account (Includes Discounts) Billing Date: All

(Note: The analysis shown is aggregated to the customer account and a customer can have multiple accounts.)

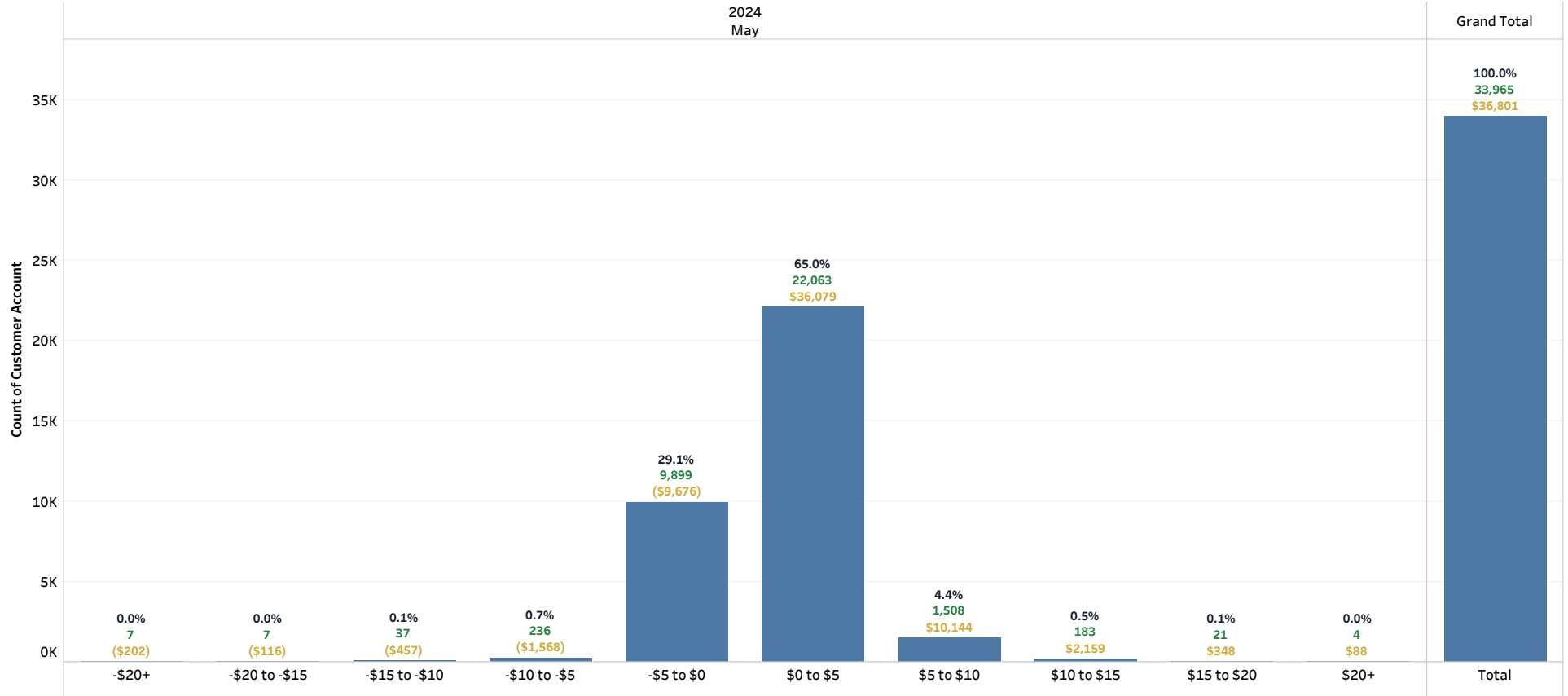
(% of Total Accounts | # of Accounts | Total Net Impact)



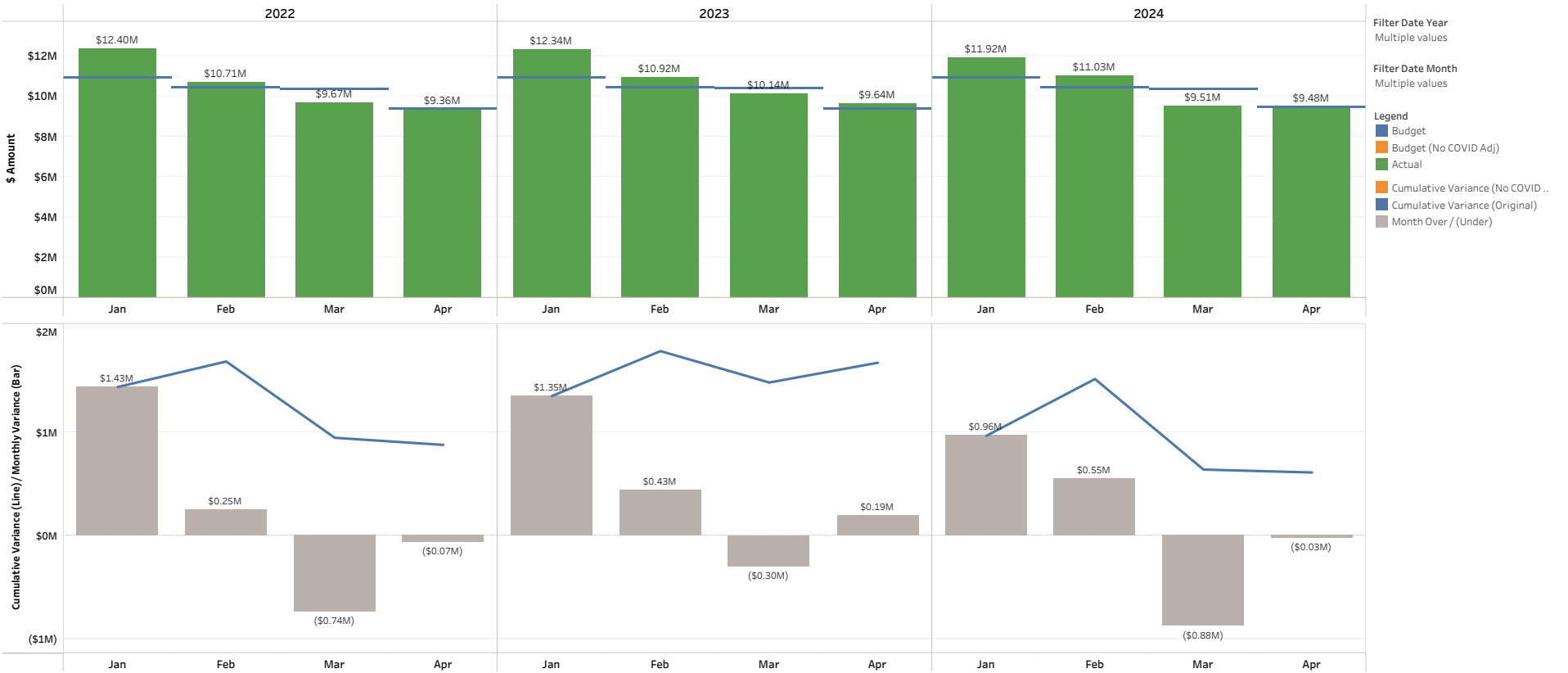
Residential Demand Billing Impact Analysis by Customer Account (Includes Discounts) Billing Date: All

(Note: The analysis shown is aggregated to the customer account and a customer can have multiple accounts.)

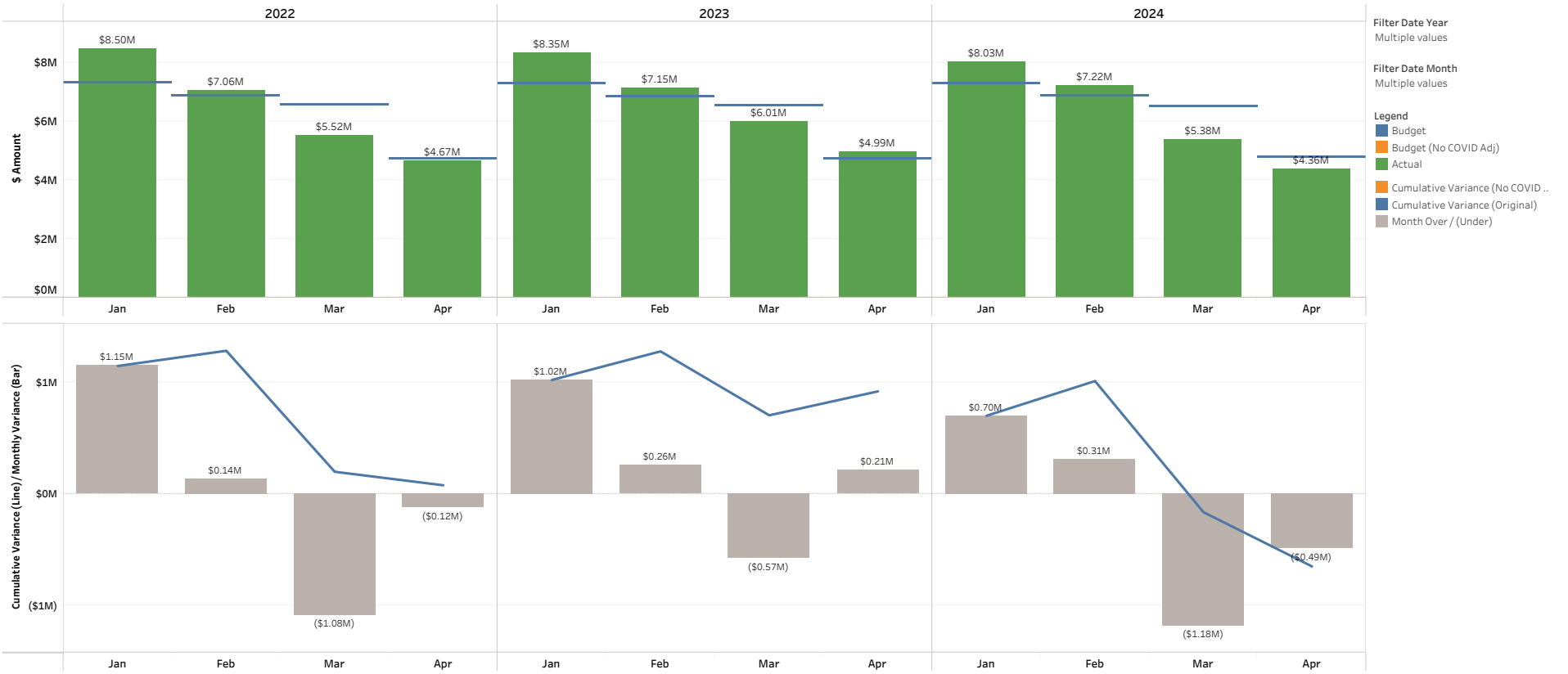
(% of Total Accounts | # of Accounts | Total Net Impact)



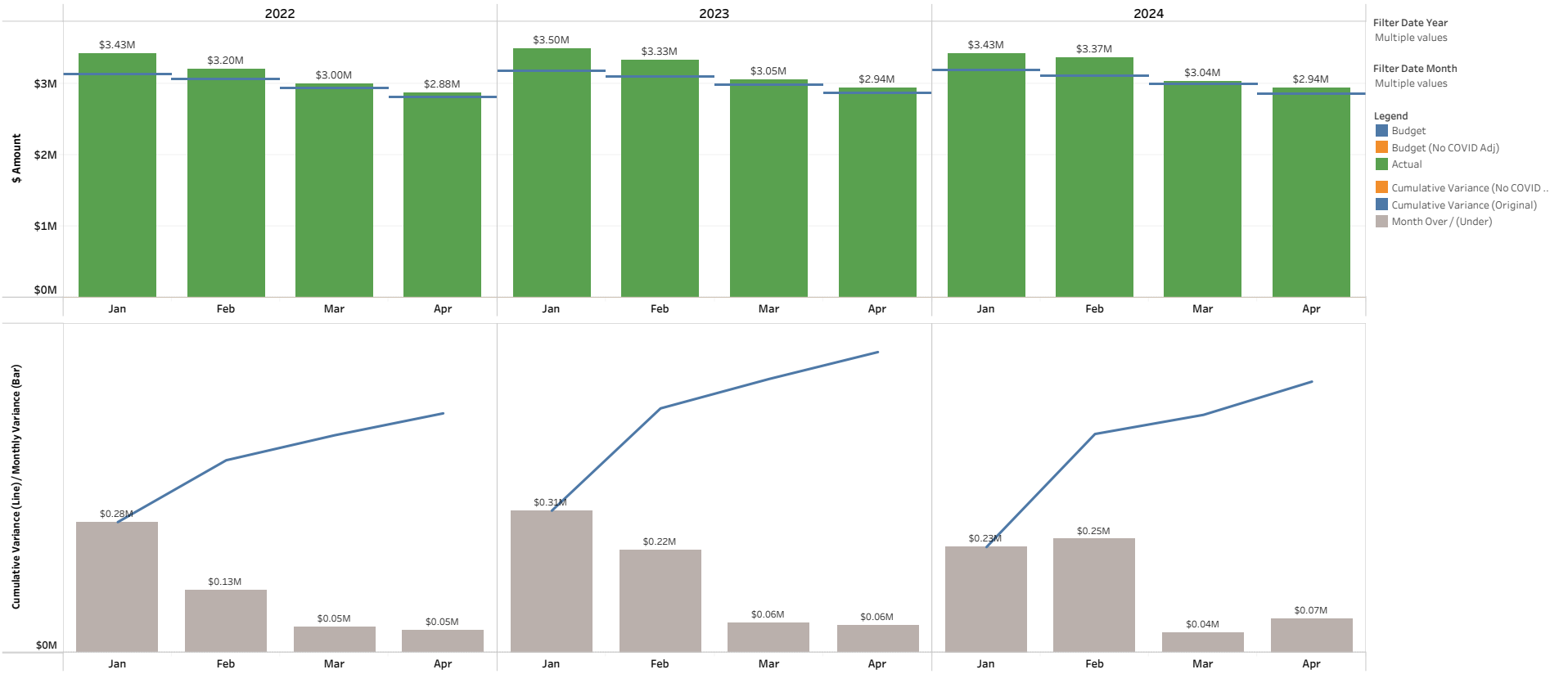
Cumulative Retail Revenue Budget vs Actuals (Original Budget Only): All



Cumulative Retail Revenue Budget vs Actuals (Original Budget Only): Residential Sales



Cumulative Retail Revenue Budget vs Actuals (Original Budget Only): [Large General Service Sales](#), [Medium General Service Sales](#), [Small General Service Sales](#)



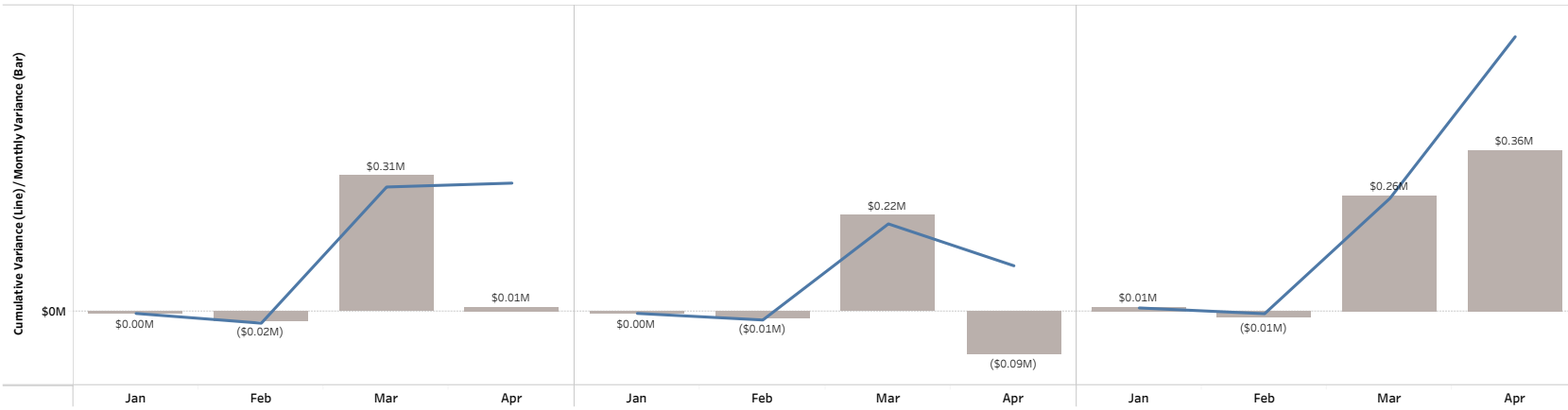
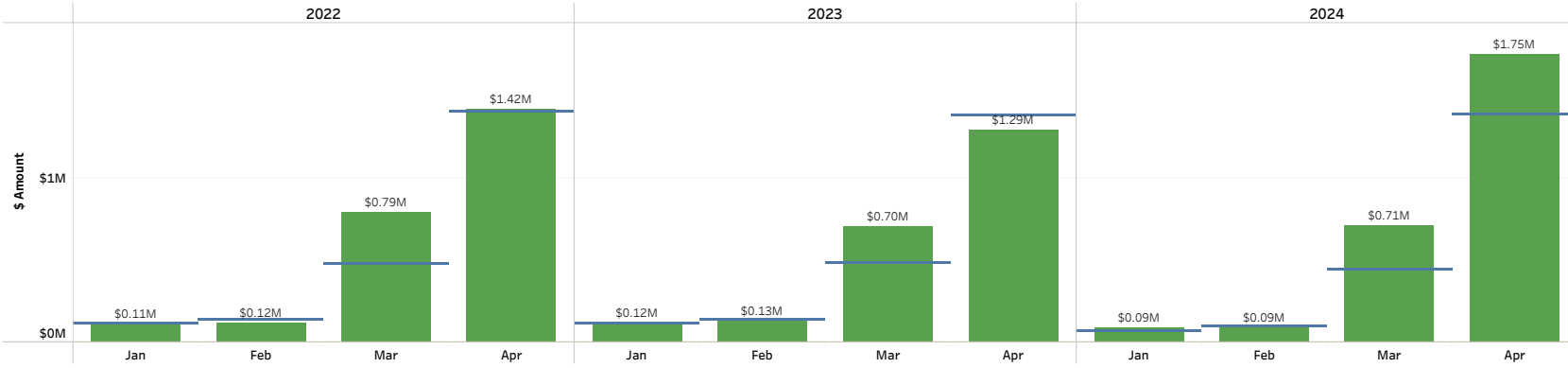
Cumulative Retail Revenue Budget vs Actuals (Original Budget Only): [Large Irrigation Sales](#)

Rate Class
Large Irrigation Sales

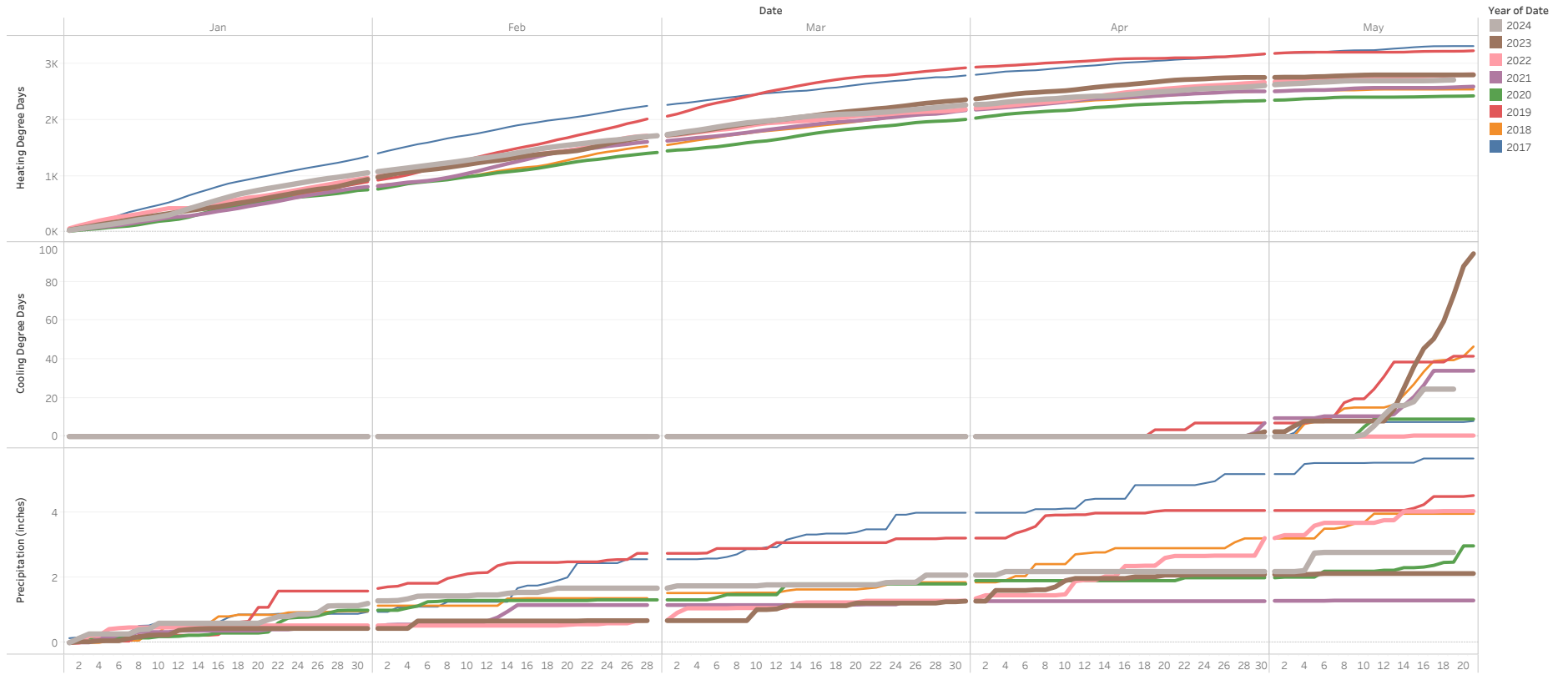
Filter Date Year
Multiple values

Filter Date Month
Multiple values

- Legend
- Budget
 - Budget (No COVID Adj)
 - Actual
 - Cumulative Variance (No COVID ..
 - Cumulative Variance (Original)
 - Month Over / (Under)



Cumulative Daily Weather by Year



Daily weather at Tri-Cities Airport (USW00024163), sourced from NOAA website, <https://www.ncdc.noaa.gov/cdo-web/search?datasetid=GHCND>

Cumulative Net Power Cost Budget vs Actuals (Original and Amended Budget): All

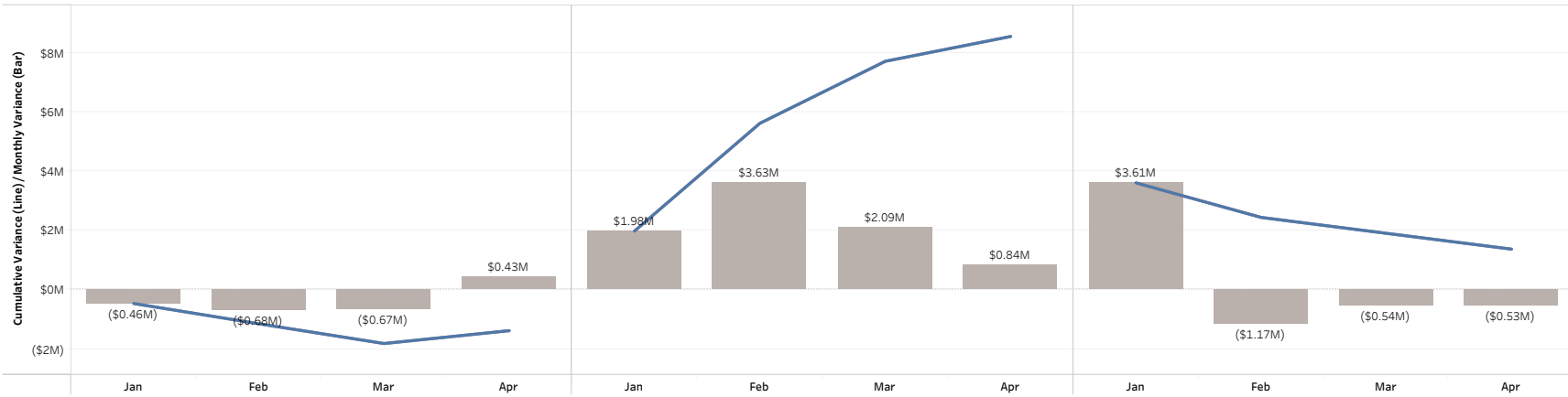
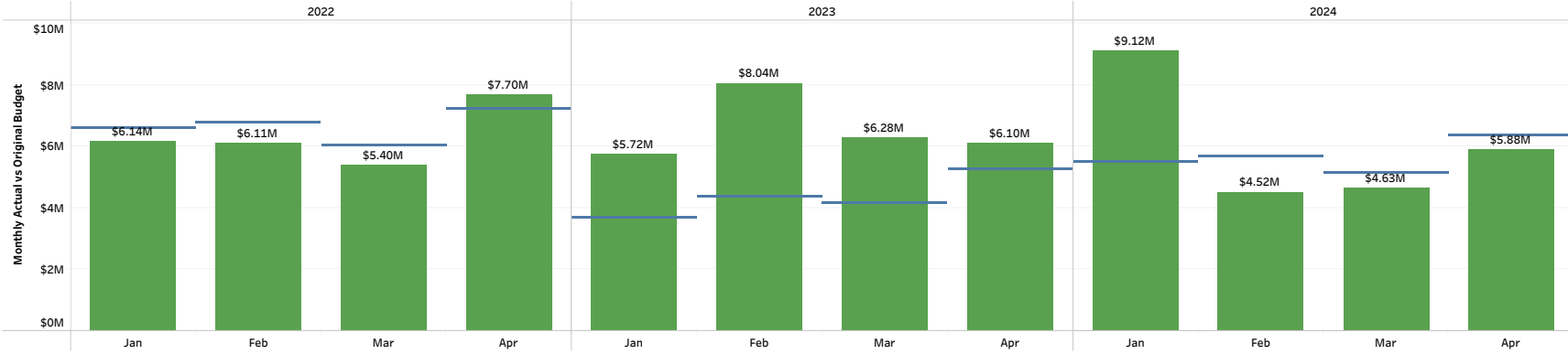
Filter Date Year
Multiple values

Filter Date Month
Multiple values

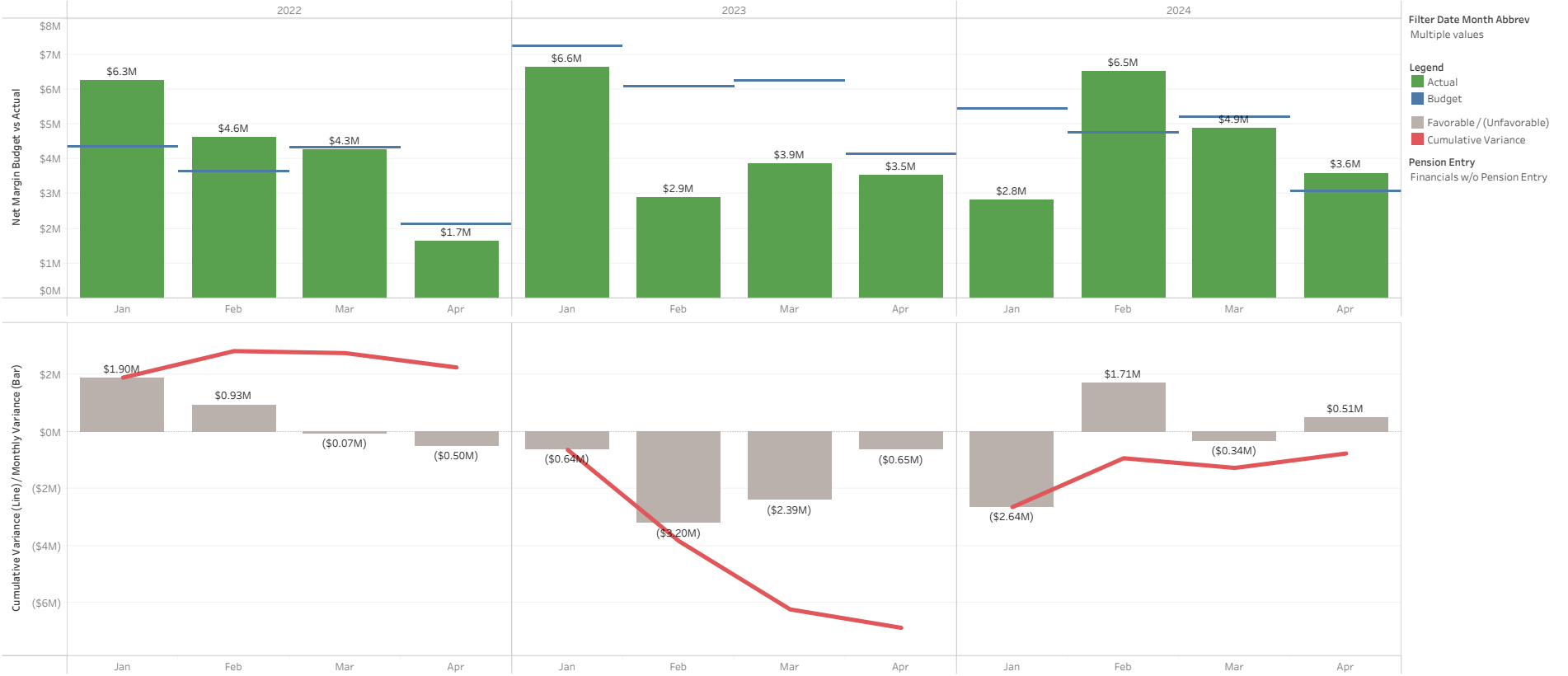
Account Sub Category
All

- Legend
- Original Budget
 - Amended Budget
 - Actual Amount
 - Cumulative Variance Ori..
 - Cumulative Variance Am..
 - Month Over / (Under)

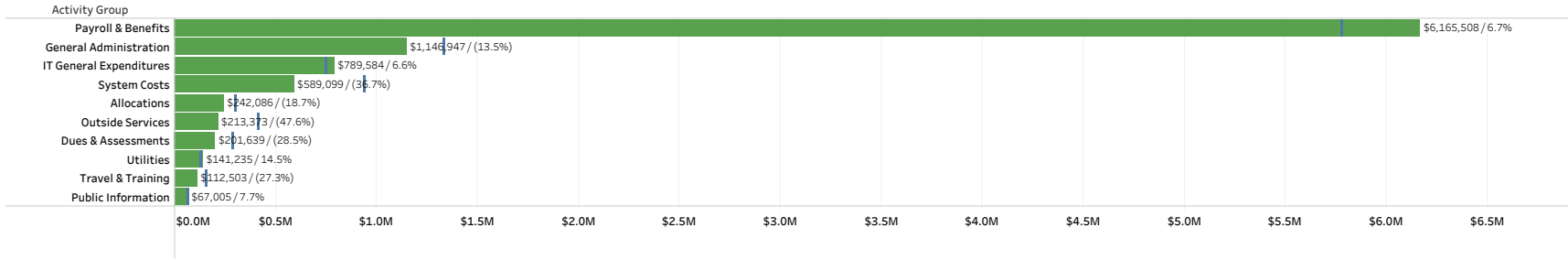
Note: Cumulative budget amendment changes are reflected in the month of September.



Cumulative Net Margin Original Budget vs Actuals



2024 Top 10 YTD O&M Actuals & Original Budget by Activity Group Through April



Enter Year
2024

Select Month
April

Top N - Activity Category
10

Dept #
All

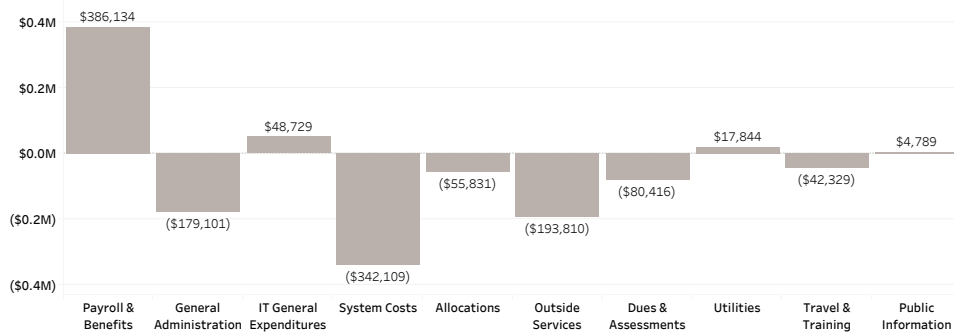
Budget Version
 Actuals
 Amended Budget
 Original Budget

Pension Entry
Financials w/o Pension En...

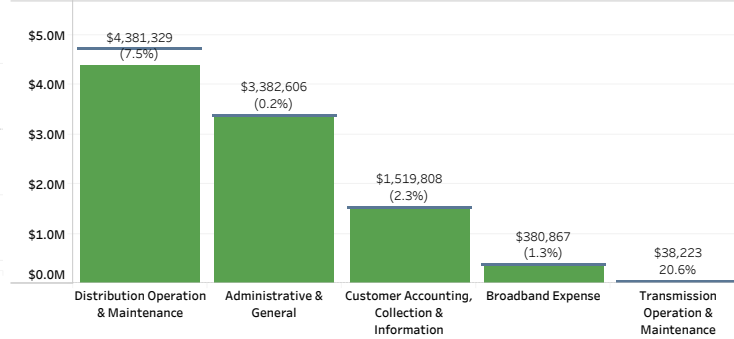
Legend

- YTD Budget
- YTD Actuals
- YTD Over/(Under)

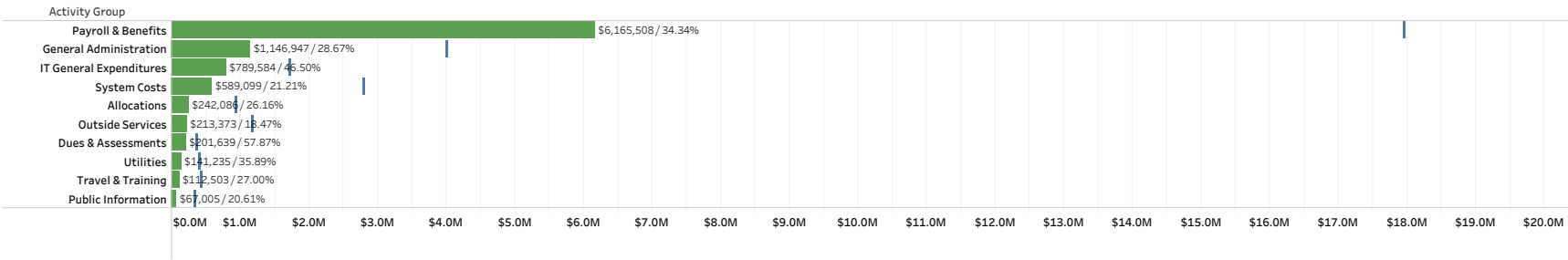
2024 Top 10, YTD O&M Budget Variance by Activity Group Through April



2024 YTD O&M Actuals & Original Budget by Financial Statement Group Through April



2024 Top 10 YTD O&M Actuals & Original Budget by Activity Group Through April
 % of Year: 33.33%



Enter Year
2024

Select Month
April

Top N - Activity Category
10

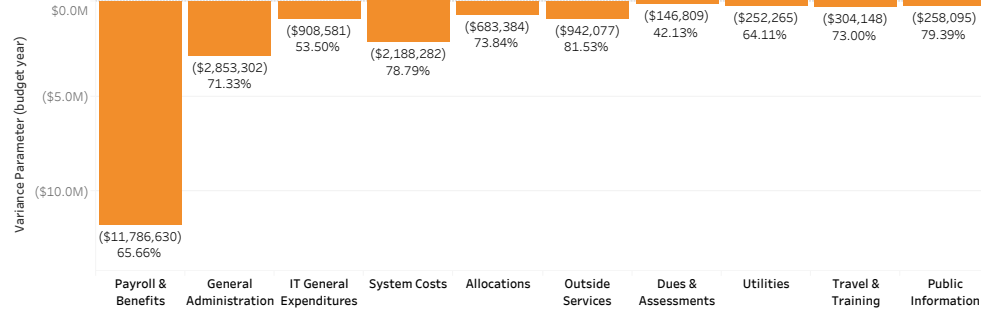
Dept #
All

Budget Version
 Actuals
 Amended Budget
 Original Budget

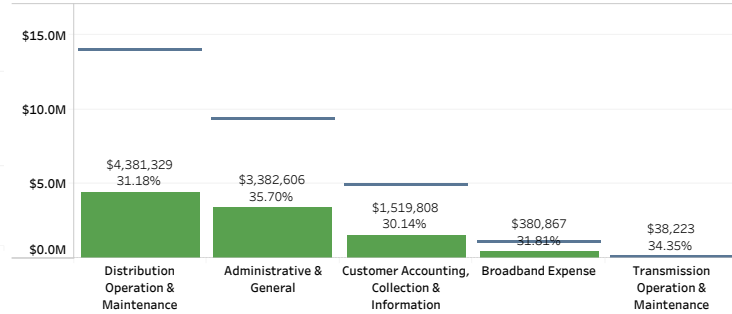
Pension Entry
Financials w/o Pension Ent..

Legend
■ Budget
■ YTD Actuals
■ Remaining Budget

2024 Top 10, Remaining Budget Amount by Activity Group through April
 % of Year Remaining: 66.67%



2024 YTD O&M Actuals & Original Budget by Financial Statement Group Through April
 % of Year: 33.33%



Capital Drill Down with 2024 Actuals & Original Budget

% of Year: 33.3%

Category	Group	Actual Amount	Budget Amount	% of Budget
Transmission	Transmission Projects	\$5,026,268	\$5,678,315	88.52%
Distribution	Capacity & Reliability	\$1,713,367	\$6,799,235	25.20%
	Customer Growth	\$2,807,896	\$8,641,661	32.49%
	General Plant	\$746,002	\$730,000	102.19%
	Other	\$70,334	\$188,760	37.26%
	Repair & Replace	\$1,672,149	\$3,154,801	53.00%
Broadband	Broadband	\$347,629	\$1,425,054	24.39%
General Plant	General Plant	\$65,387	\$1,368,500	4.78%
Information Technology	Information Technology	\$148,036	\$986,750	15.00%
Other	Other	\$6,659		
Security	Security	\$7,531	\$2,945,200	0.26%
Grand Total		\$12,611,258	\$31,918,277	39.51%

Select Year

2024

Select Month(s)

- Jan
- Feb
- Mar
- Apr
- May
- Jun
- Jul
- Aug
- Sep
- Oct
- Nov
- Dec

Budget Version

- Actuals
- Amended Budget
- Original Budget

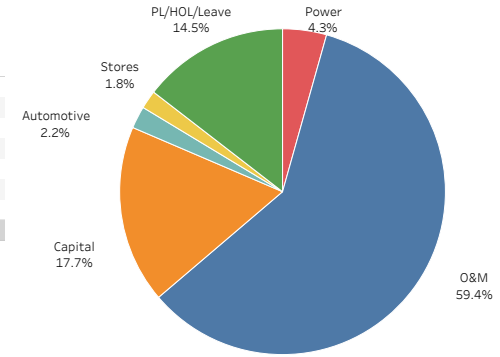
Pension Entry

Financials w/o Pension Entry

YTD April 2024 Labor by Category: (Activity 11)
Actuals & Original Budget

Category	Current Year Actuals	Current Year Budget	Over / (Under)	Current Year % Variance	Prior Year Actual	Prior Year Variance	Prior Year % Variance
Power	\$241,541	\$242,655	(\$1,114)	(0.5%)	\$253,104	(\$11,563)	(4.6%)
O&M	\$3,280,632	\$3,315,898	(\$35,266)	(1.1%)	\$3,006,766	\$273,867	9.1%
Capital	\$1,145,571	\$985,859	\$159,712	16.2%	\$975,869	\$169,702	17.4%
Automotive	\$89,388	\$122,897	(\$33,509)	(27.3%)	\$112,103	(\$22,715)	(20.3%)
PL/HOL/Leave	\$722,465	\$810,084	(\$87,619)	(10.8%)	\$528,933	\$193,532	36.6%
Stores	\$106,686	\$102,354	\$4,331	4.2%	\$100,271	\$6,415	6.4%
Preliminary Survey	(\$433)		(\$433)			(\$433)	
Grand Total	\$5,585,849	\$5,579,747	\$6,102	0.1%	\$4,977,045	\$608,804	12.2%

YTD April 2024 Budget: (Activity 11)



Activity 11

Enter Year 2024

Select Month April

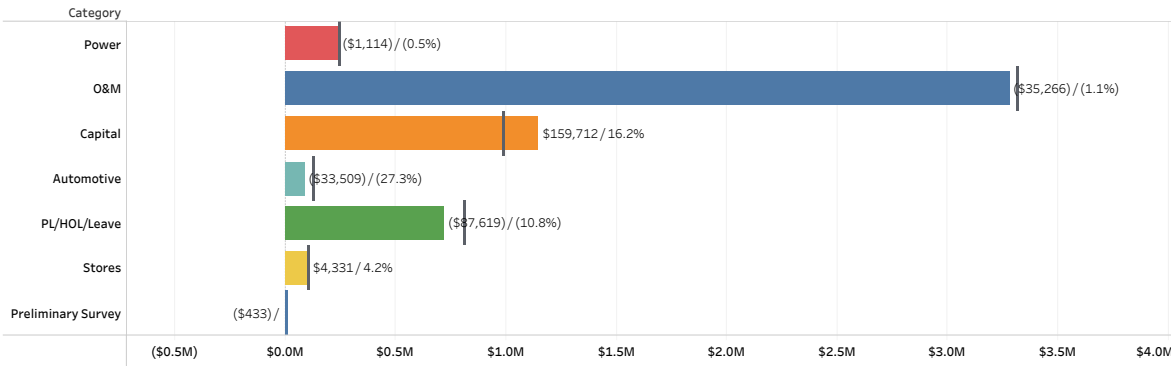
Category

- Power
- O&M
- Capital
- Automotive
- PL/HOL/Leave
- Stores
- Preliminary Survey

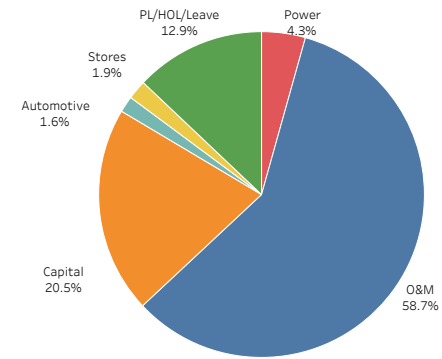
Budget Version

- Actuals
- Amended Budget
- Original Budget

YTD April 2024 Labor by Category: (Activity 11)
(Amount displayed is actuals minus budget / % variance from budget)



YTD April 2024 Actuals: (Activity 11)



Pension Entry
Financials w/o Pension Entry

[Go to the Monthly View](#)

[Monthly Multi-Year Graphs](#)

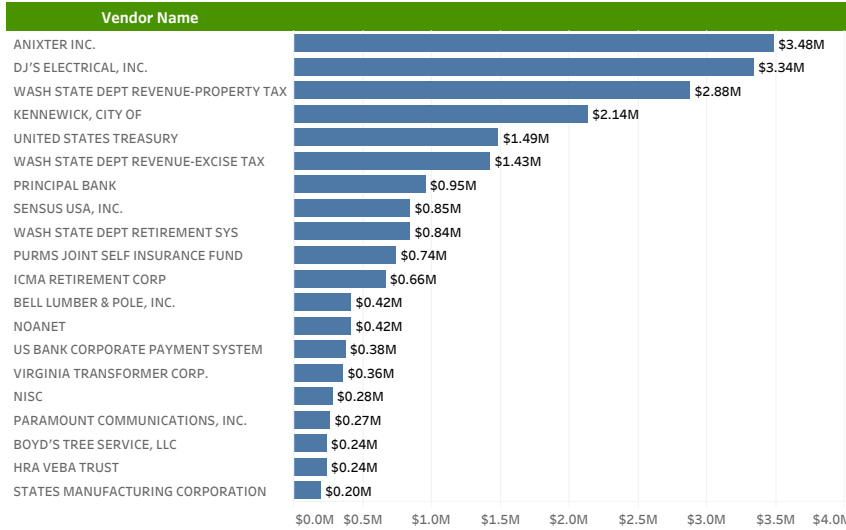
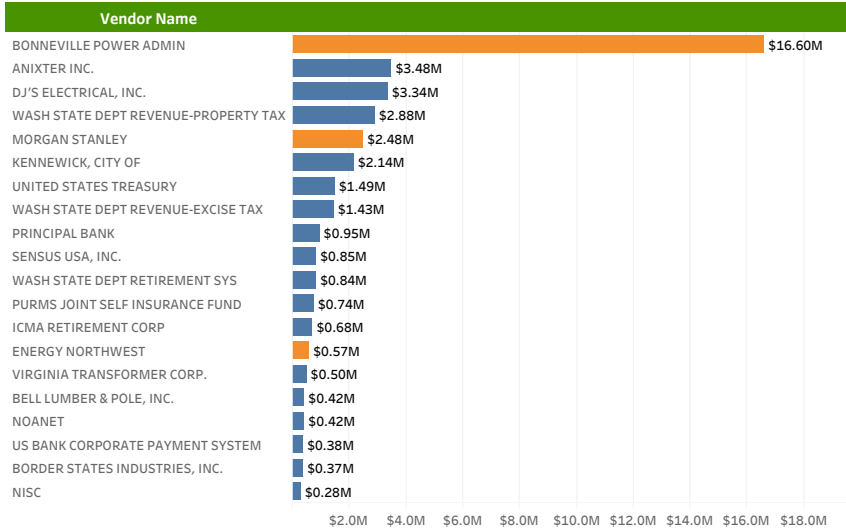
[Cumulative Multi-Year Graphs](#)

District Top 20 Vendors - 2024 YTD (Including Power Transactions)

District Top 20 Vendors - 2024 YTD (Excluding Power Transactions)

Year
2024

Top N Vendor
20



Revenue Class Hourly Demand

By Year for Revenue Class: **All** in Month: **May**

Select filters: Year: All Month: May

Billed Revenue Class

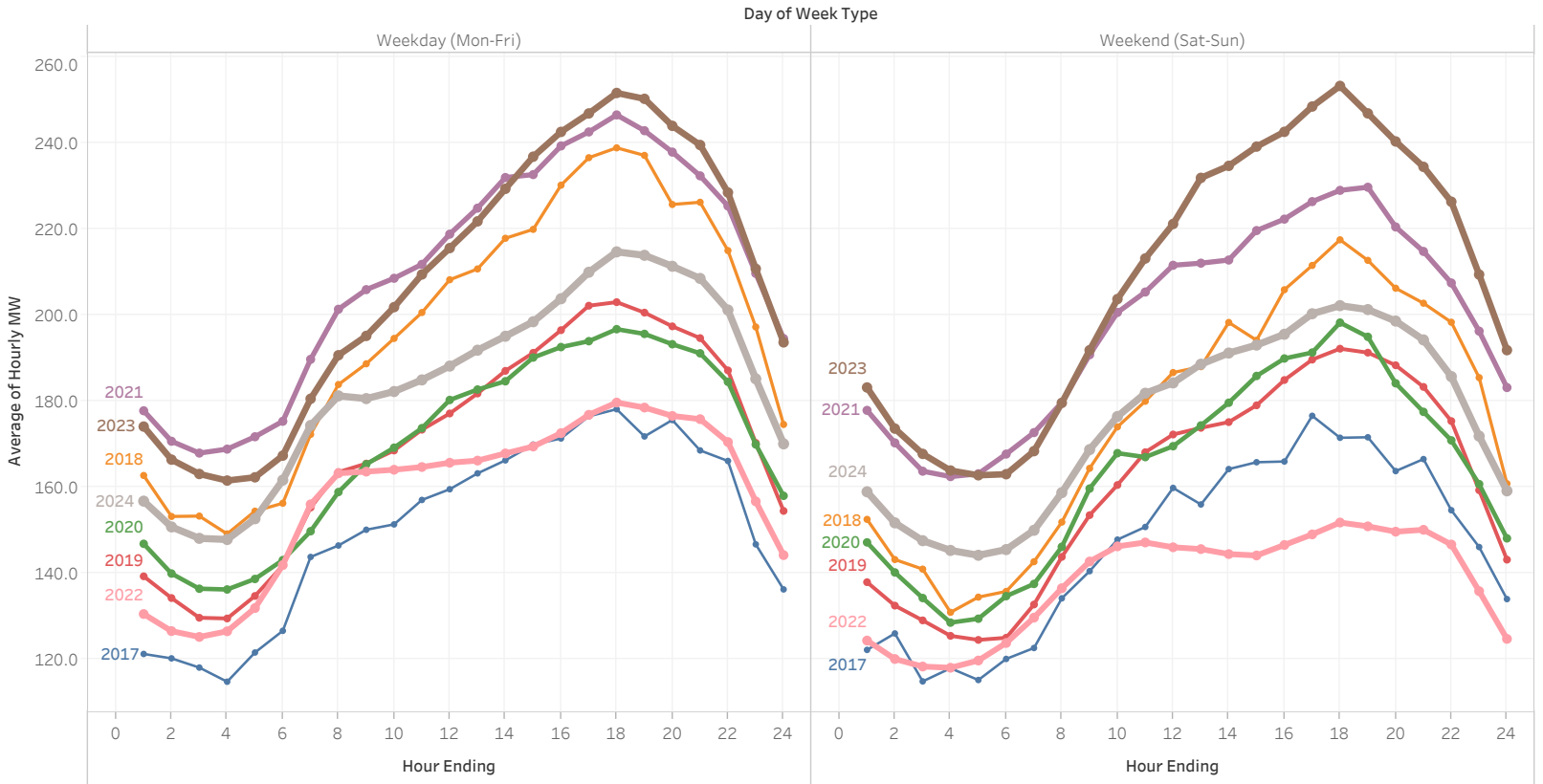
- In
- Out

Revenue Class

- Residential
- Small General
- Medium General
- Large General
- Large Industrial
- Large Irrigation
- Small Irrigation

AMI data updated through:

Tue, May 21, 2024



Revenue Class Hourly Demand

By Year for Revenue Class: **Residential** in Month: **May**

Select filters: Year All Month May

Billed Revenue Class

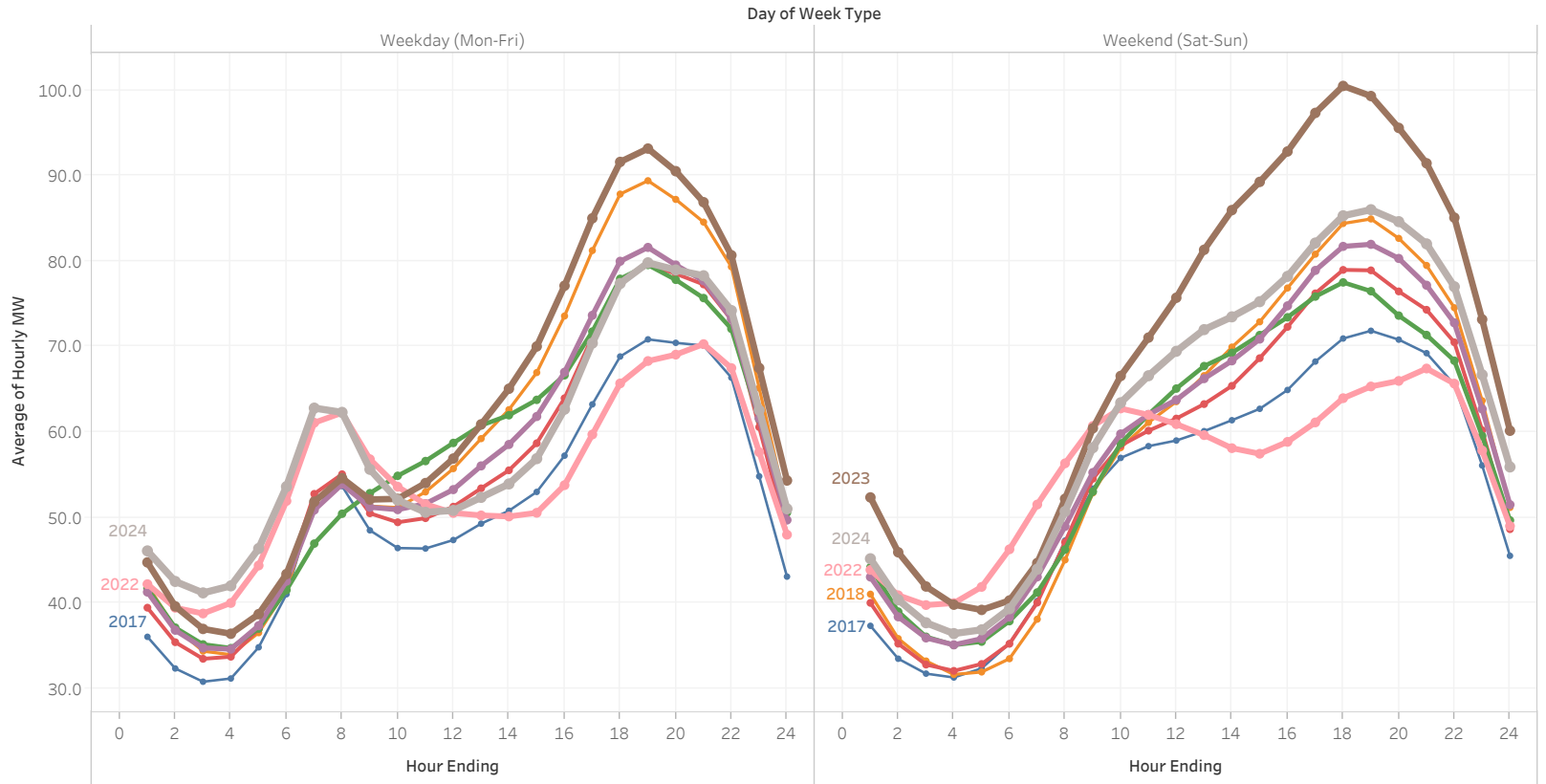
- In
- Out

Revenue Class

- Residential
- Small General
- Medium General
- Large General
- Large Industrial
- Large Irrigation
- Small Irrigation

AMI data updated through:

Tue, May 21, 2024



Revenue Class Hourly Demand

By Year for Revenue Class: **Small General, Medium General, Large General** in Month: **May**

Select filters: Year All Month May

Billed Revenue Class

- In
- Out

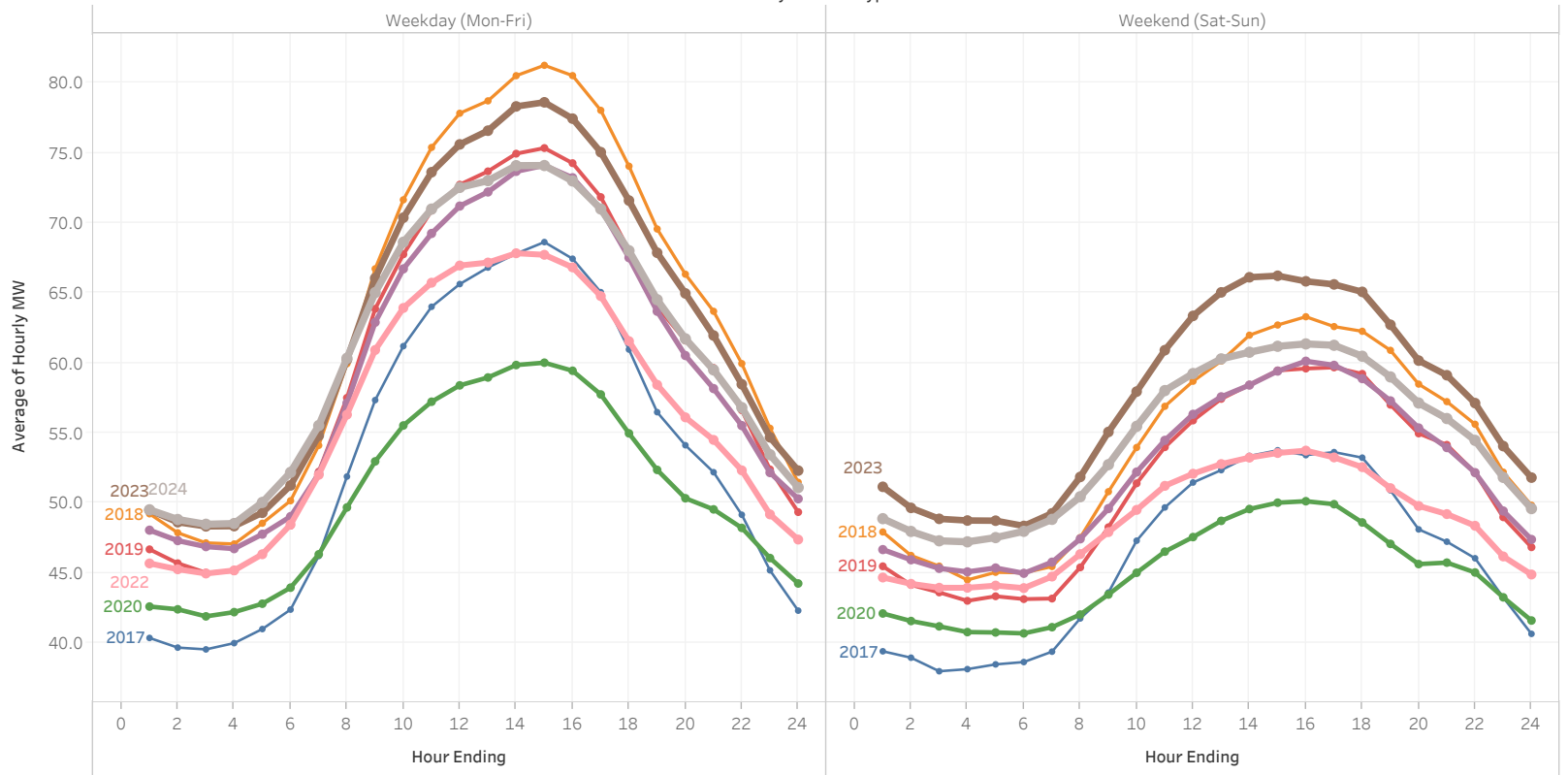
Revenue Class

- Residential
- Small General
- Medium General
- Large General
- Large Industrial
- Large Irrigation
- Small Irrigation

Day of Week Type

Weekday (Mon-Fri)

Weekend (Sat-Sun)



AMI data updated through:

Tue, May 21, 2024

Revenue Class Hourly Demand

By Year for Revenue Class: **Large Irrigation** in Month: **May**

Select filters: Year All Month May

Billed Revenue Class

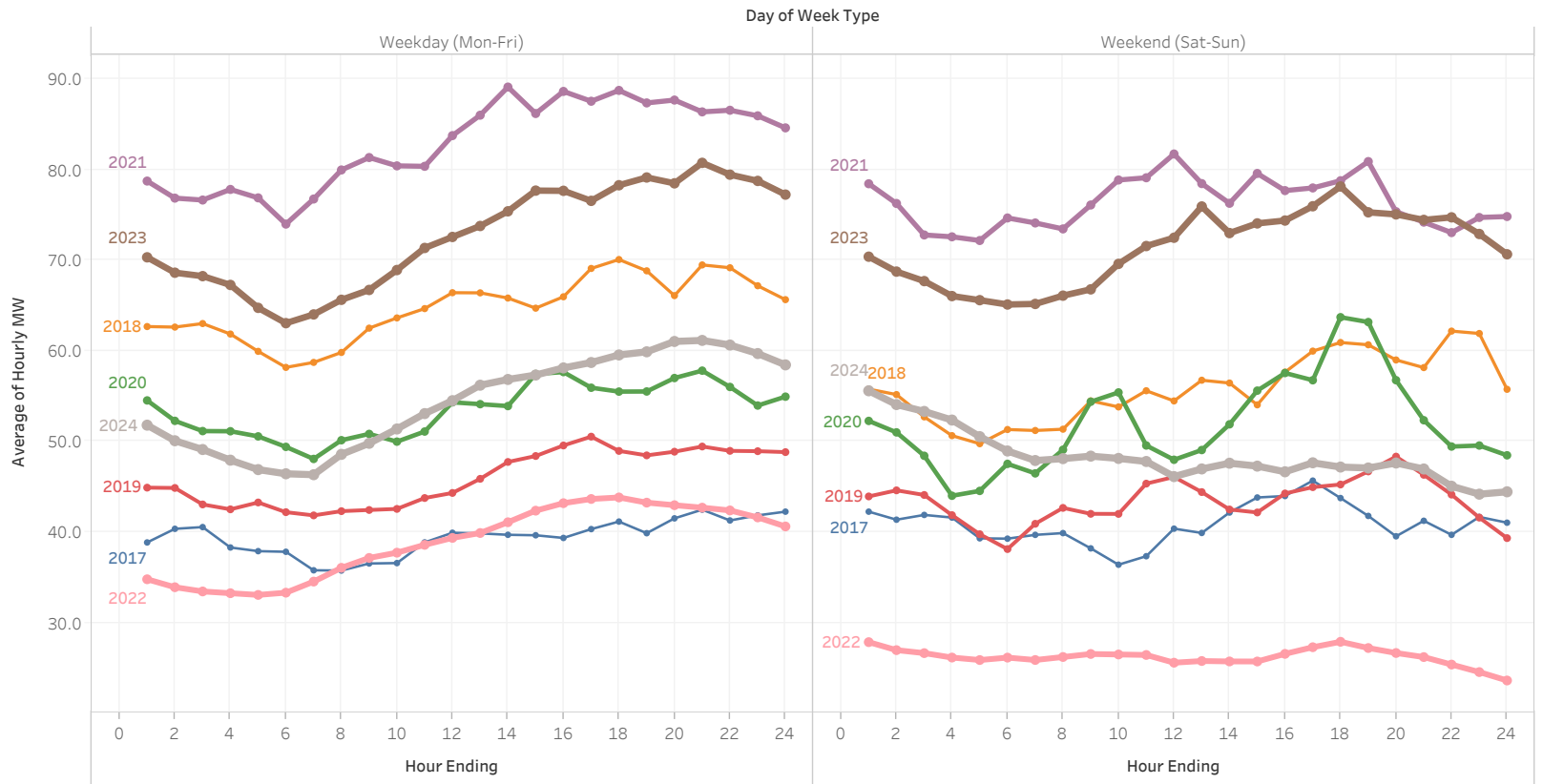
- In
- Out

Revenue Class

- Residential
- Small General
- Medium General
- Large General
- Large Industrial
- Large Irrigation
- Small Irrigation

AMI data updated through:

Tue, May 21, 2024



Revenue Class Cumulative Energy

By Year for Revenue Class: **All** in Month: **May**

Select filters:

Year
All

Month
May

Month-Day
Multiple values

Date
May

Billed Revenue Class

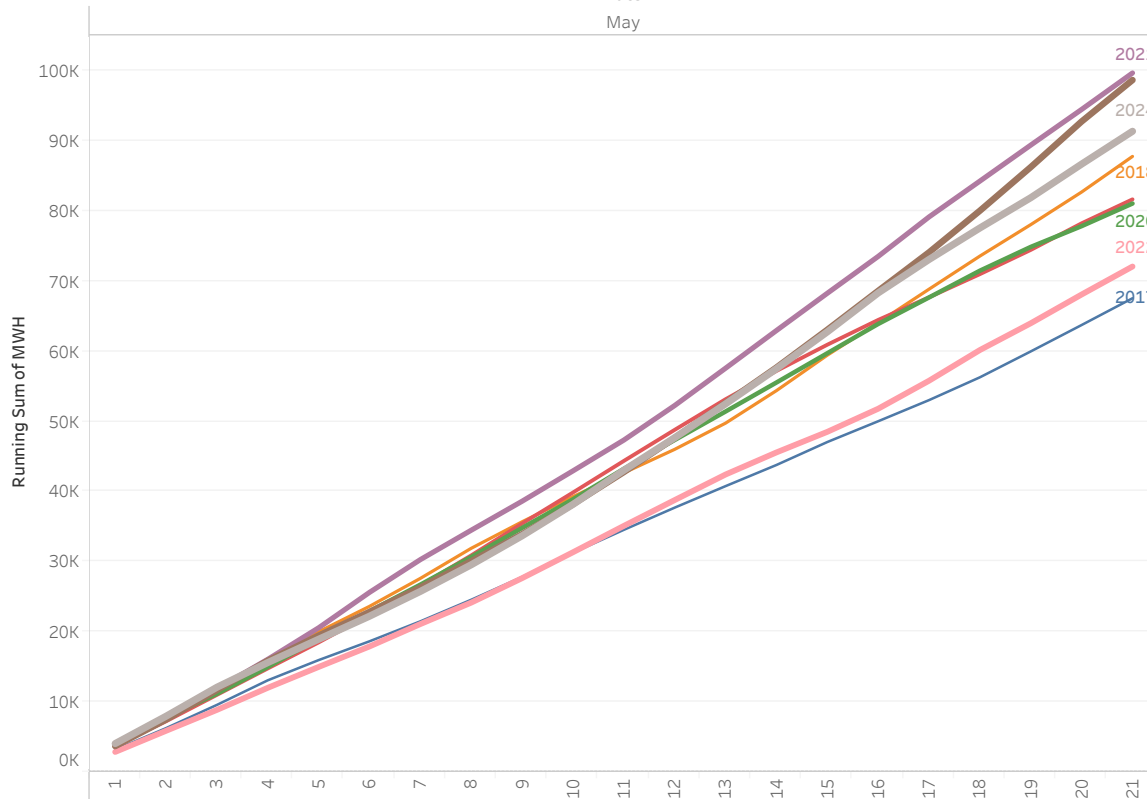
- In
- Out

Revenue Class

- Residential
- Small General
- Medium General
- Large General
- Large Industrial
- Large Irrigation
- Small Irrigation

AMI data updated through:

Tue, May 21, 2024



Year Over Year Summary:
(hover to highlight year)

Year of Date	MWH	MWH Difference	% Difference
2017	67,575		
2018	87,805	20,230	29.94%
2019	81,682	-6,123	-6.97%
2020	81,086	-596	-0.73%
2021	99,705	18,619	22.96%
2022	72,099	-27,605	-27.69%
2023	98,700	26,600	36.89%
2024	91,389	-7,311	-7.41%

Note:
Totals do not include
non-AMI meter readings.

Revenue Class Cumulative Energy

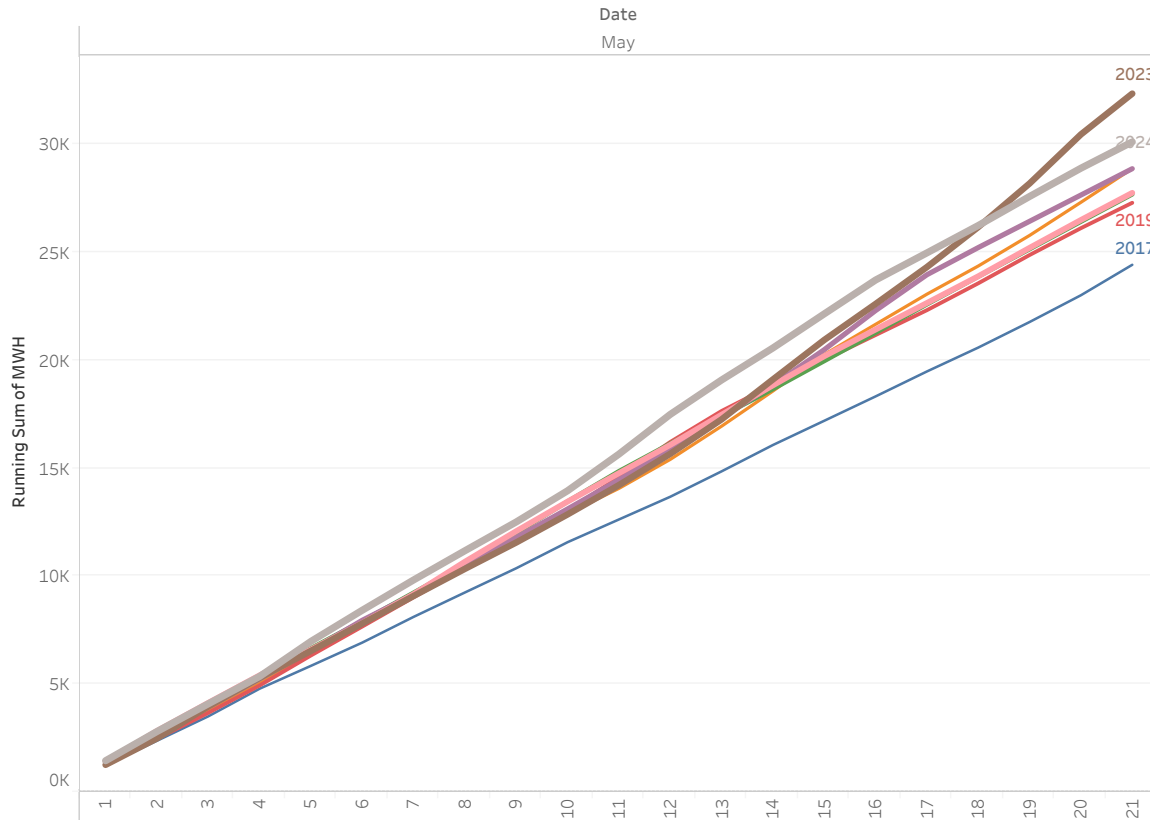
By Year for Revenue Class: **Residential** in Month: **May**

Select filters: Year All Month May Month-Day Multiple values Date May

Billed Revenue Class
 In
 Out

- Revenue Class
- Residential
 - Small General
 - Medium General
 - Large General
 - Large Industrial
 - Large Irrigation
 - Small Irrigation

AMI data updated through:
 Tue, May 21, 2024



Year Over Year Summary:
 (hover to highlight year)

Year of Date	MWH	MWH Difference	% Difference
2017	24,411		
2018	28,863	4,452	18.24%
2019	27,281	-1,581	-5.48%
2020	27,672	391	1.43%
2021	28,860	1,188	4.29%
2022	27,741	-1,119	-3.88%
2023	32,336	4,595	16.56%
2024	30,100	-2,236	-6.92%

Note:
 Totals do not include non-AMI meter readings.

Revenue Class Cumulative Energy

By Year for Revenue Class: **Small General, Medium General, Large General** in Month: **May**

Select filters:

Year: All
 Month: May
 Month-Day: Multiple values

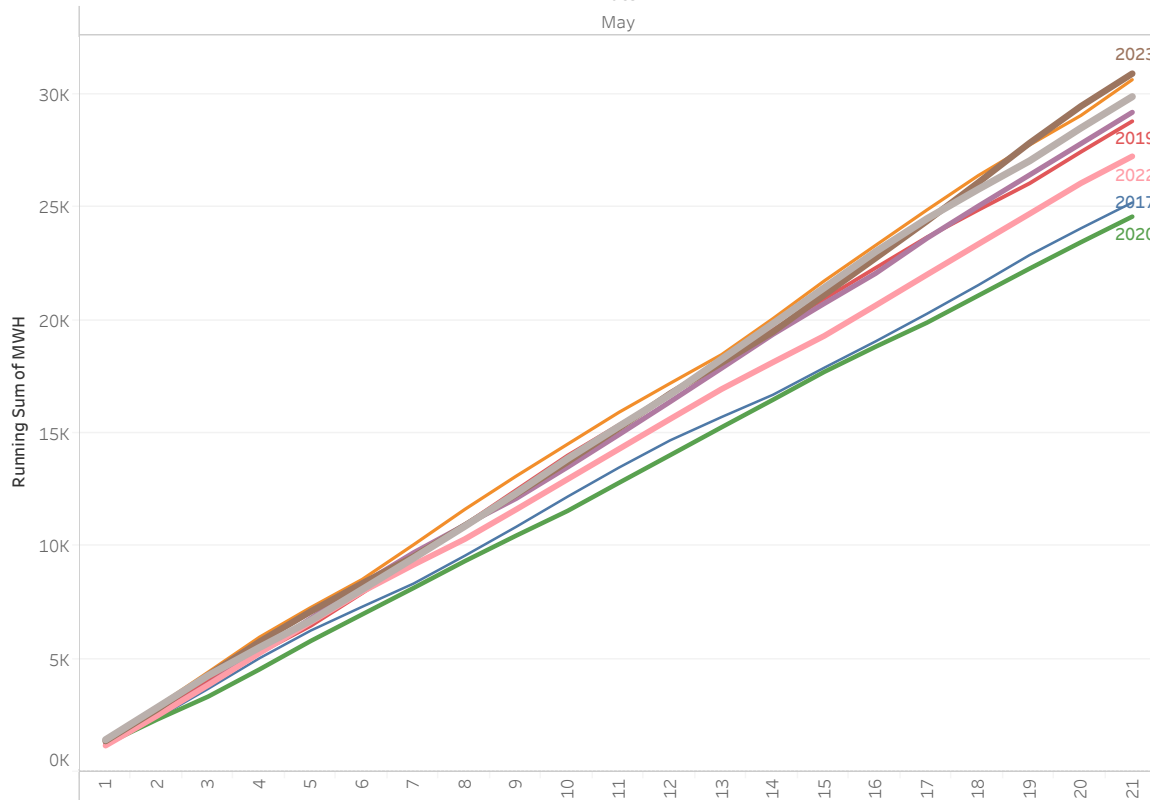
Billed Revenue Class

- In
- Out

Revenue Class

- Residential
- Small General
- Medium General
- Large General
- Large Industrial
- Large Irrigation
- Small Irrigation

Date
 May



Year Over Year Summary:
 (hover to highlight year)

Year of Date	MWH	MWH Difference	% Difference
2017	25,209		
2018	30,648	5,439	21.58%
2019	28,809	-1,839	-6.00%
2020	24,586	-4,223	-14.66%
2021	29,203	4,617	18.78%
2022	27,254	-1,949	-6.67%
2023	30,917	3,663	13.44%
2024	29,896	-1,021	-3.30%

AMI data updated through:

Tue, May 21, 2024

Note:
 Totals do not include non-AMI meter readings.

Revenue Class Cumulative Energy

By Year for Revenue Class: **Large Irrigation** in Month: **May**

Select filters:

Year: All
 Month: May
 Month-Day: Multiple values

Billed Revenue Class

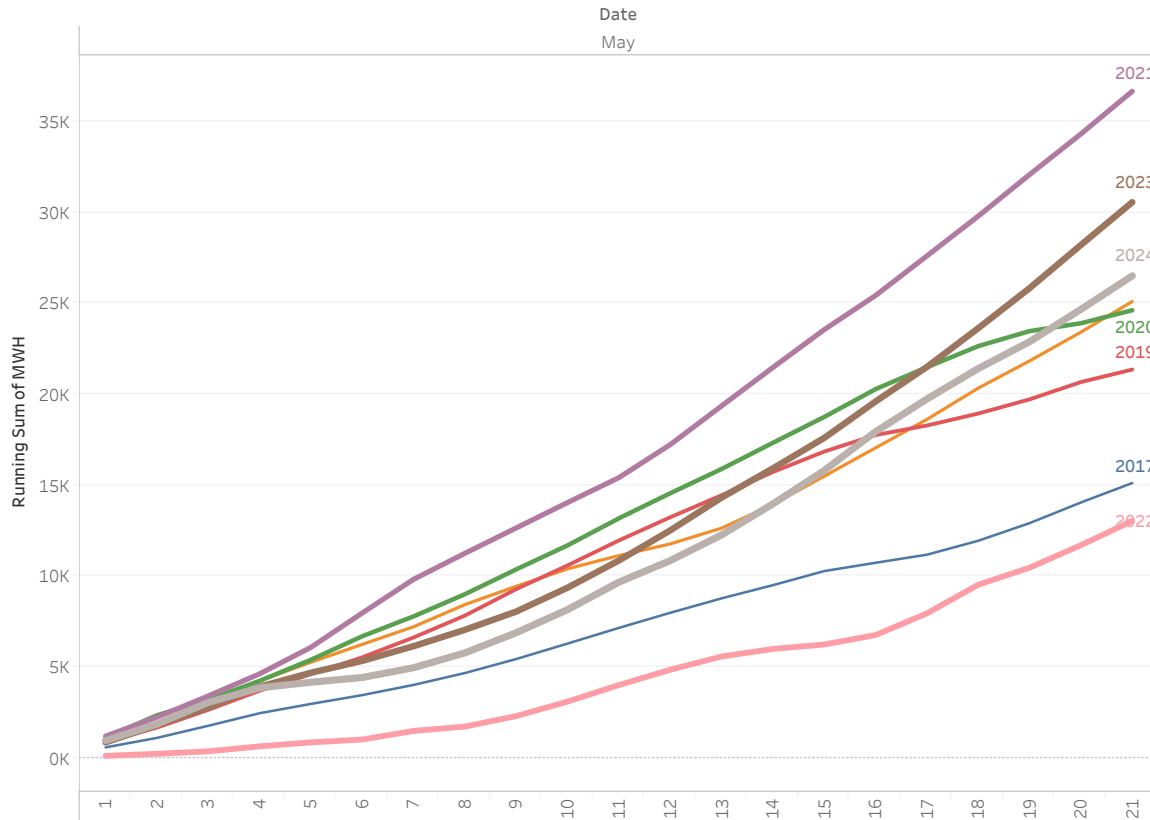
- In
- Out

Revenue Class

- Residential
- Small General
- Medium General
- Large General
- Large Industrial
- Large Irrigation
- Small Irrigation

AMI data updated through:

Tue, May 21, 2024



Year Over Year Summary:
 (hover to highlight year)

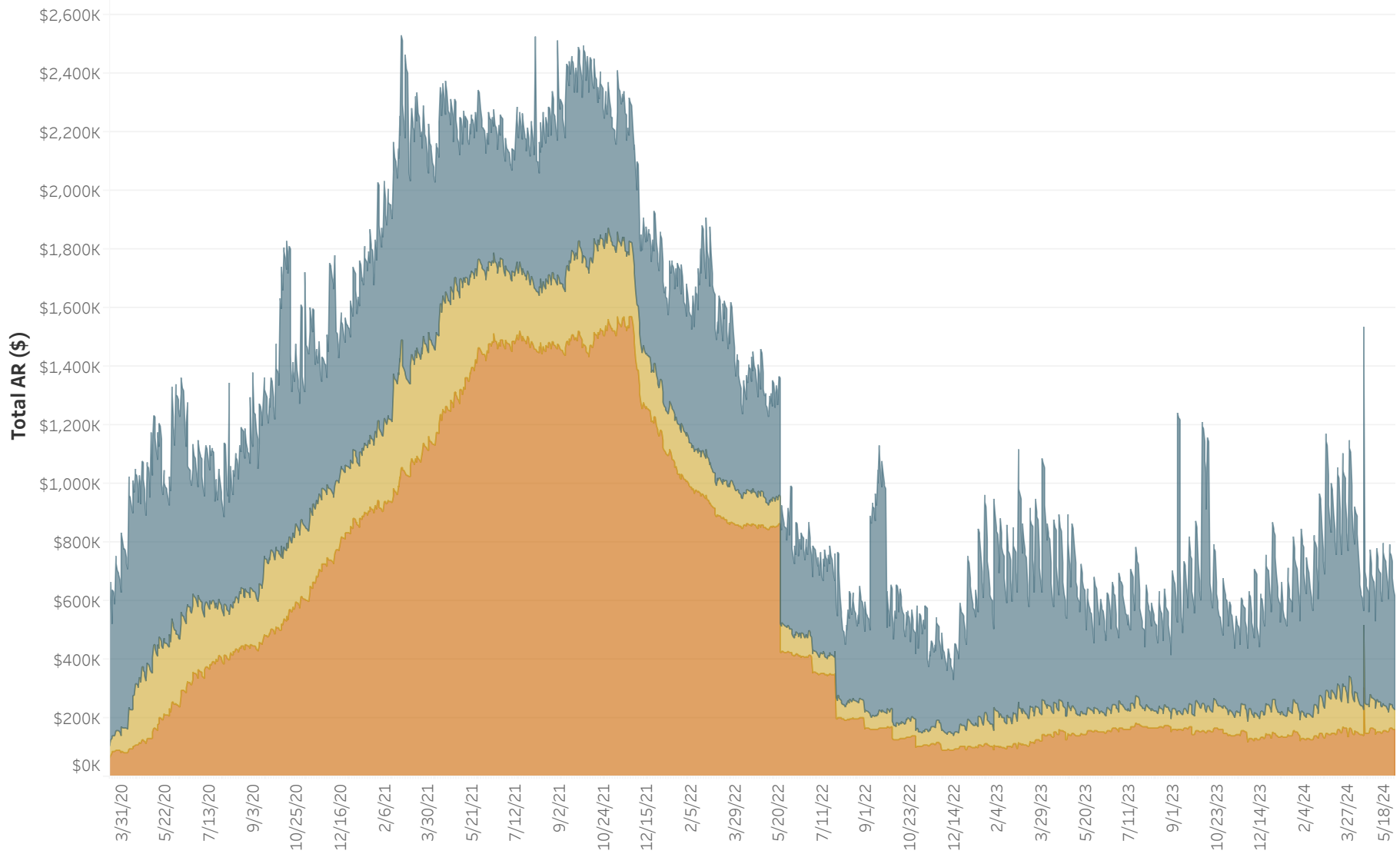
Year of Date	MWH	MWH Difference	% Difference
2017	15,113		
2018	25,102	9,989	66.10%
2019	21,357	-3,745	-14.92%
2020	24,622	3,265	15.29%
2021	36,668	12,047	48.93%
2022	13,032	-23,636	-64.46%
2023	30,567	17,535	134.55%
2024	26,511	-4,055	-13.27%

Note:
 Totals do not include non-AMI meter readings.
 No AMI readings for the pump decks at Spaw, Paterson #1 & #2 and Prior #1 Bay 1 & 2.

Past Due AR in Dollars for Selected Revenue Classes:

All
 Balance Aging: [30 Days](#) | [60 Days](#) | [90+ Days](#)

Consumer Class Selection:	Accounts	Dollars
Regular		
30 Days	2,469	\$384,322
60 Days	526	\$67,373
Revenue Class Selection:		
All		
90+ Days	771	\$160,973
Past Due	3,766	\$612,669
Service Status:		
All		
Total AR	53,167	\$3,938,649



AR data as of 5/22/2024. Data source is AR Balance History Tableau report view.

Past Due AR in Dollars for Selected Revenue Classes:

All

Balance Aging: [30 Days](#) | [60 Days](#) | [90+ Days](#)

Consumer Class Selection:

Regular

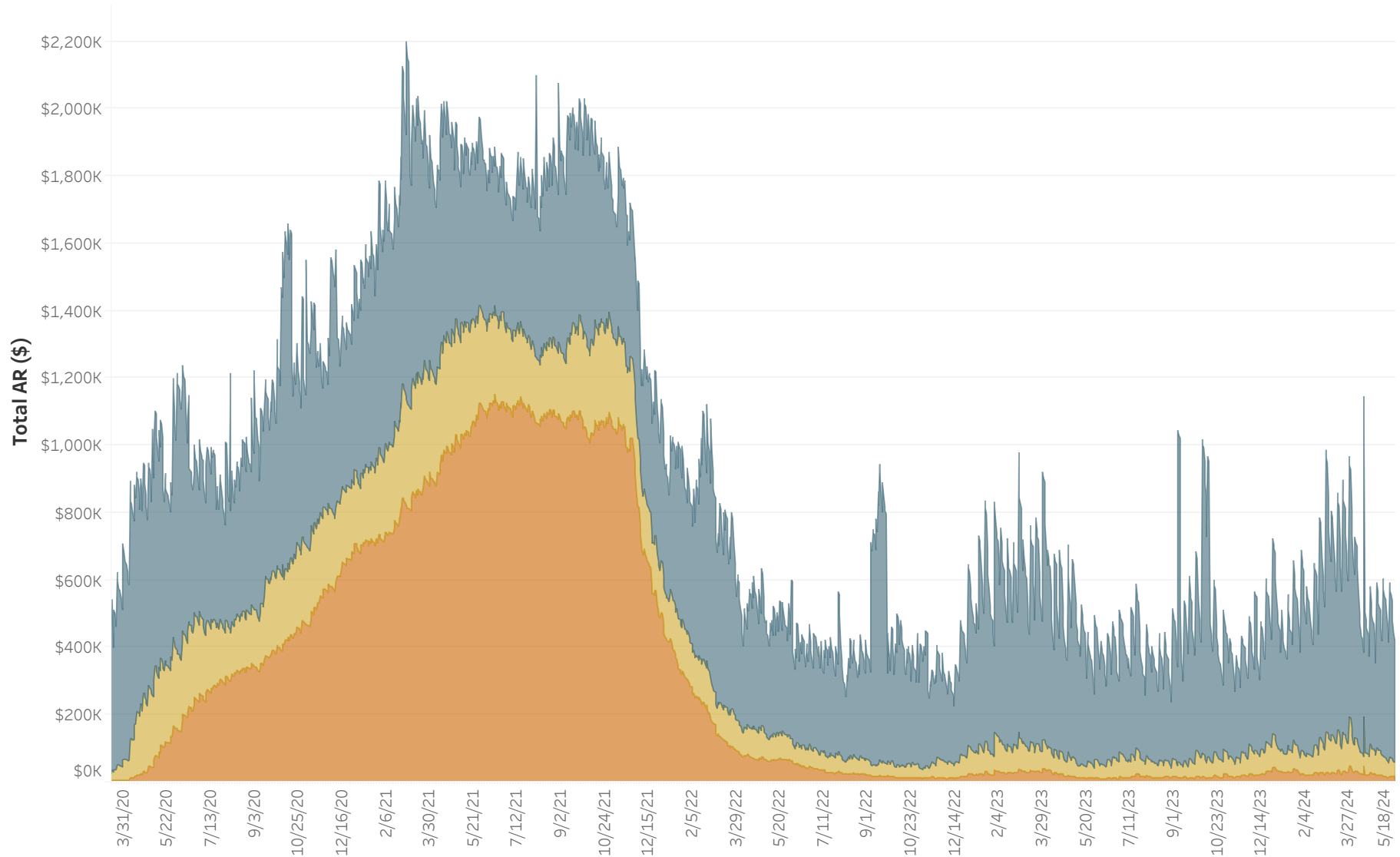
Revenue Class Selection:

All

Service Status:

Active

	Accounts	Dollars
30 Days	2,293	\$361,978
60 Days	426	\$41,939
90+ Days	129	\$14,671
Past Due	2,848	\$418,588
Total AR	51,106	\$3,732,825



AR data as of 5/22/2024. Data source is AR Balance History Tableau report view.

Past Due AR in Dollars for Selected Revenue Classes:

Residential

Balance Aging: 30 Days | 60 Days | 90+ Days

Consumer Class Selection:

Regular

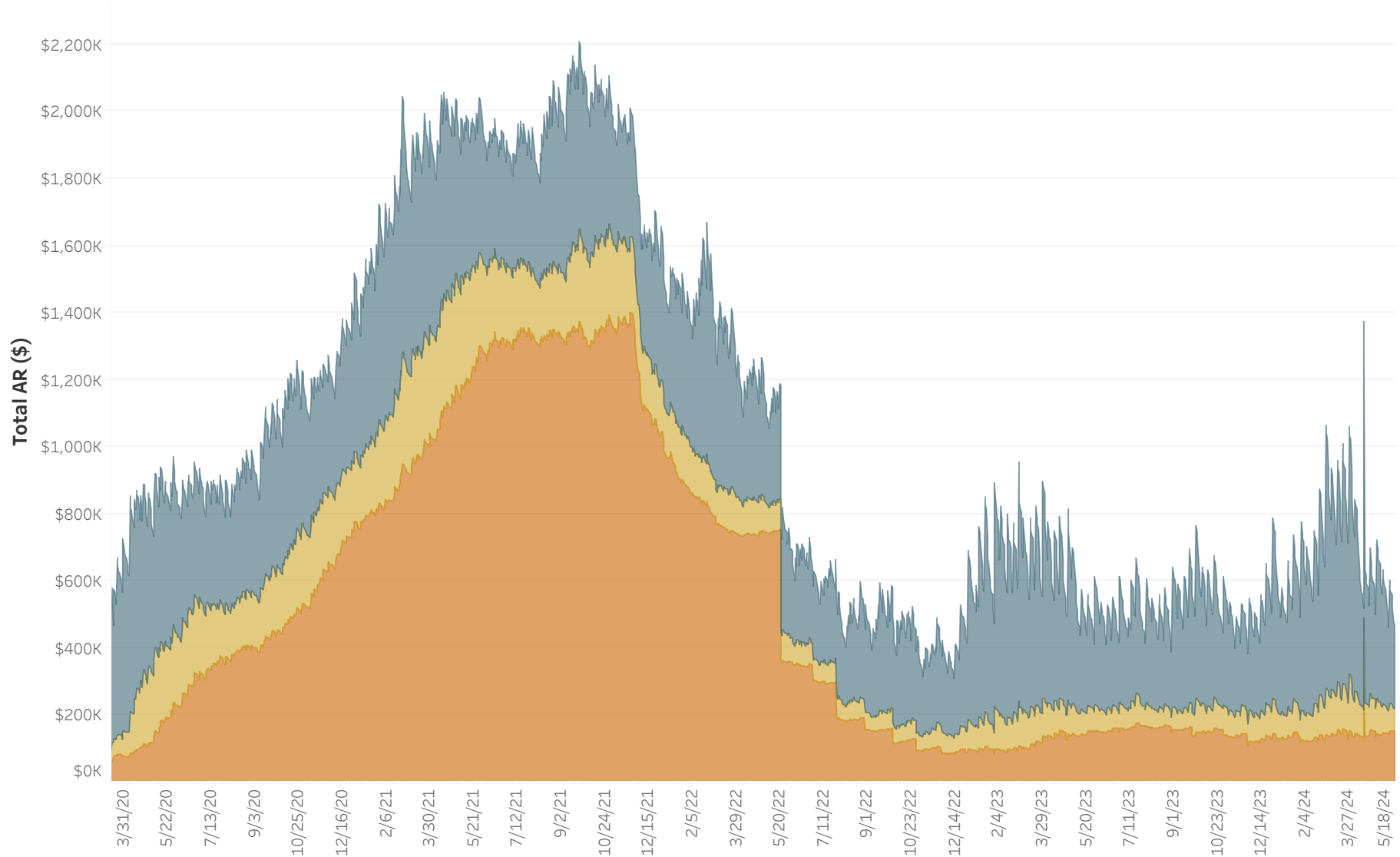
Revenue Class Selection:

Residential

Service Status:

All

	Accounts	Dollars
30 Days	2,230	\$245,504
60 Days	480	\$65,101
90+ Days	731	\$151,189
Past Due	3,441	\$461,794
Total AR	44,110	\$1,730,572



AR data as of 5/22/2024. Data source is AR Balance History Tableau report view.

Past Due AR in Dollars for Selected Revenue Classes:

Residential

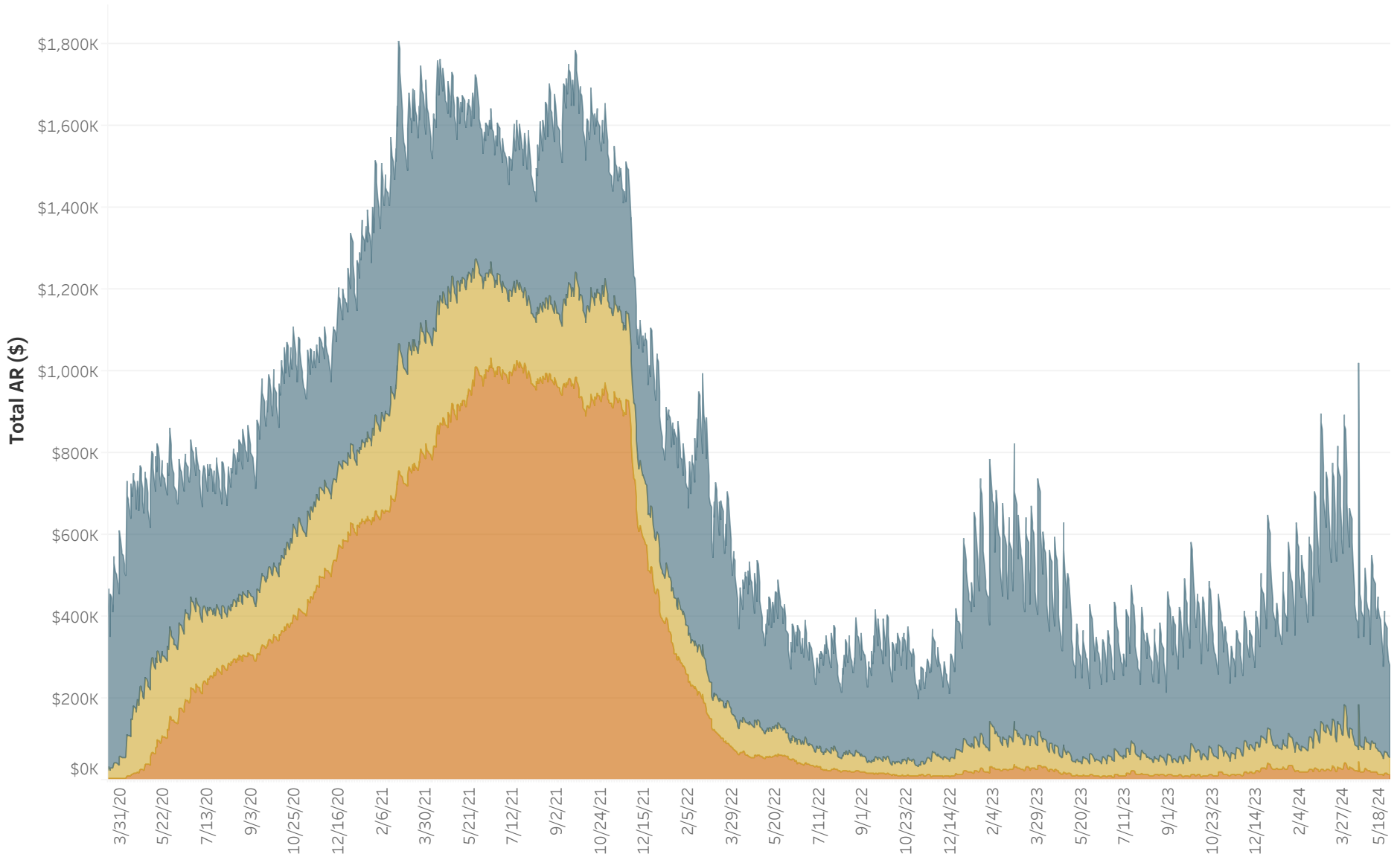
Balance Aging: 30 Days | 60 Days | 90+ Days

Consumer Class Selection:
Regular

Revenue Class Selection:
Residential

Service Status:
Active

	Accounts	Dollars
30 Days	2,059	\$223,437
60 Days	383	\$40,491
90+ Days	107	\$13,845
Past Due	2,549	\$277,773
Total AR	42,153	\$1,537,696



AR data as of 5/22/2024. Data source is AR Release History Tables report view.

Past Due AR in Dollars for Selected Revenue Classes:

Residential

Balance Aging: 30 Days | 60 Days | 90+ Days

Consumer Class Selection:

Regular

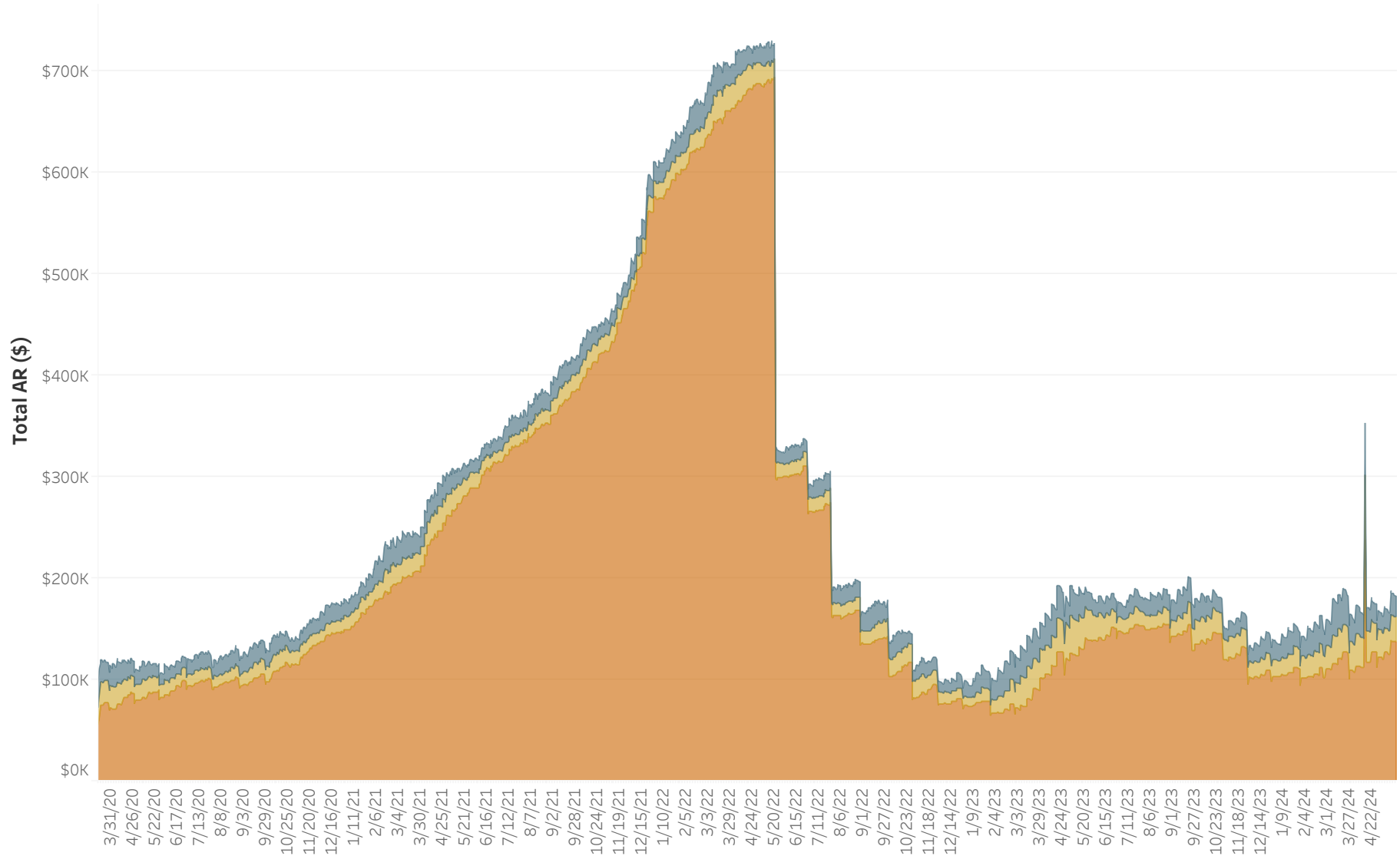
Revenue Class Selection:

Residential

Service Status:

Inactive

	Accounts	Dollars
30 Days	159	\$20,499
60 Days	94	\$24,048
90+ Days	620	\$137,082
Past Due	873	\$181,629
Total AR	1,620	\$190,997



AR data as of 5/22/2024. Data source is AR Balance History Tableau report view.